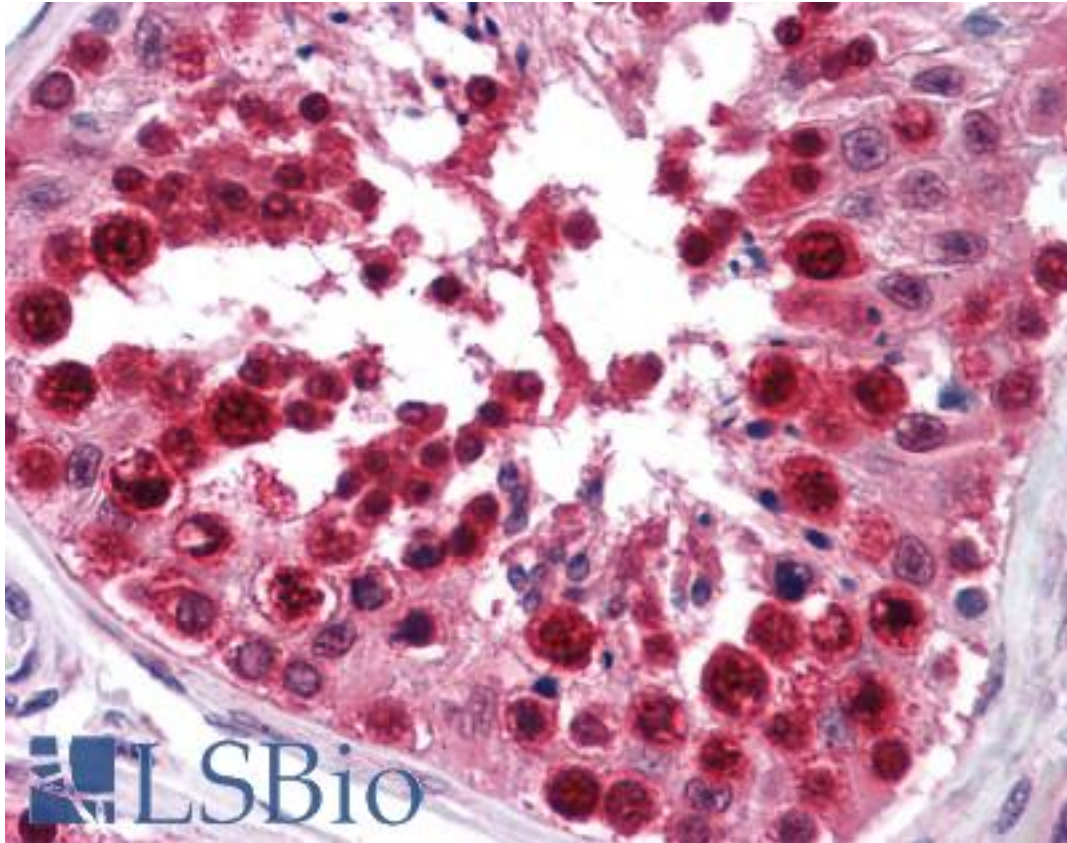


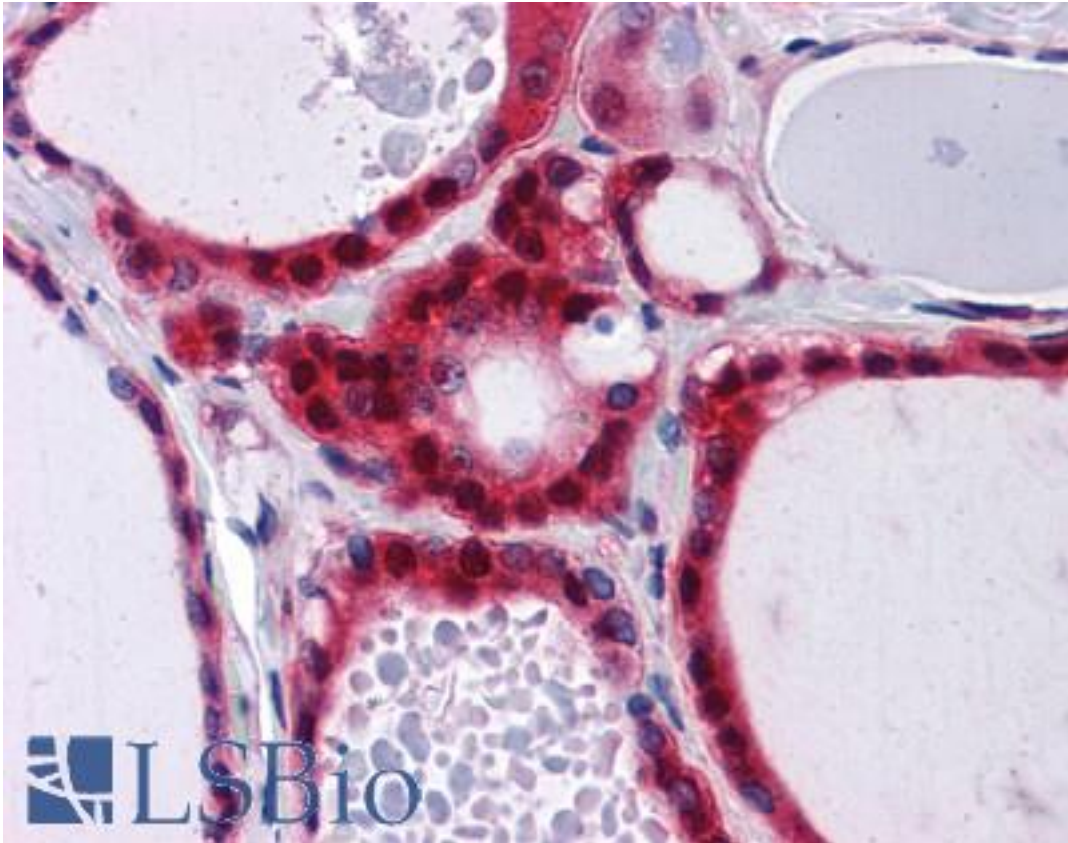
HNRNP-E2 / PCBP2 Mouse anti-Human Monoclonal (5F12) Antibody - LS-B4392 - LSBio	
<b>CatalogID:</b>	LS-B4392
<b>Validation:</b>	This antibody replaces catalog number LS-C105009. It has been validated for use in the following assays: IHC-P.
<b>Target:</b>	poly(rC) binding protein 2 (PCBP2)
<b>Synonyms:</b>	PCBP2 Antibody, Alpha-CP2 Antibody, HnRNP E2 Antibody, HNRPE2 Antibody, Poly(rC) binding protein 2 Antibody, Poly(rC)-binding protein 2 Antibody, HnRNP-E2 Antibody
<b>Host</b>	PCBP2 antibody was produced in Mouse
<b>Clonality:</b>	Monoclonal
<b>Isotype:</b>	IgG2a,k
<b>Clone Name:</b>	5F12
<b>Immunogen Species:</b>	HNRNP-E2 / PCBP2 antibody was raised against Human
<b>Antigen Type:</b>	Recombinant protein
<b>Immunogen:</b>	HNRNP-E2 / PCBP2 antibody was raised against pCBP2 (AAH01155, 1 a.a. ~ 363 a.a) full length recombinant protein with GST tag. MW of the GST tag alone is 26 KDa.
<b>Reactivity:</b>	Human
<b>Purification:</b>	Protein A purified
<b>Presentation:</b>	PBS, pH 7.2. Sourced in Ascites.
<b>Recommended Storage:</b>	Store at -20°C. Aliquot to avoid freeze/thaw cycles.
<b>Usage Summary:</b>	Western Blot (Cell lysate) - positive control K-562. Western Blot (Transfected lysate) - positive control transfected 293T cell line. Immunofluorescence (10 ug/ml) - positive control HeLa cells. Sandwich ELISA (Recombinant protein). RNAi Knockdown (Antibody validated).
<b>Uses:</b>	IHC - Paraffin (5 µg/ml), Immunofluorescence (10 µg/ml), Western blot, ELISA, RNA interference (Optimal dilution to be determined by the researcher)
<b>Size:</b>	50 µg
<b>Concentration:</b>	1 mg/ml

**Immunohistochemistry Image:**



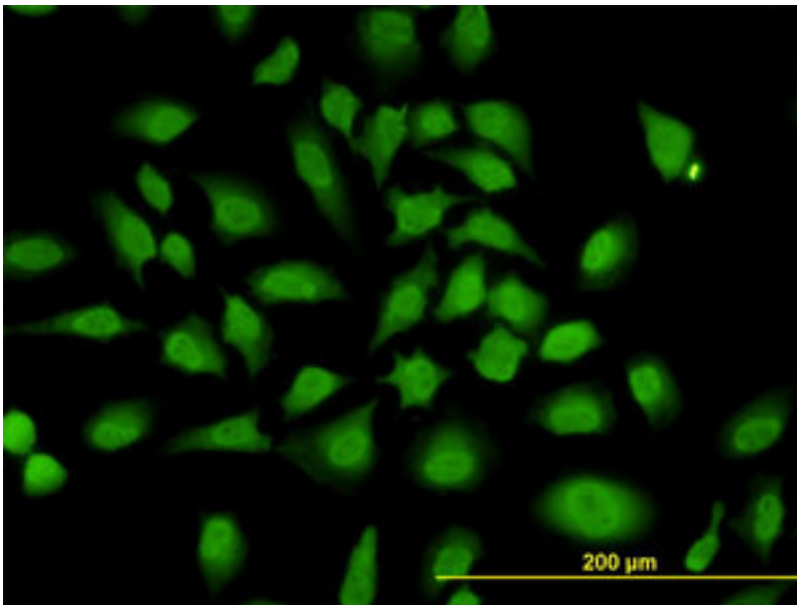
Anti-PCBP2 antibody IHC of human testis. Immunohistochemistry of formalin-fixed, paraffin-embedded tissue after heat-induced antigen retrieval. Antibody LS-B4392 concentration 5 ug/ml.

**Immunohistochemistry Image:**



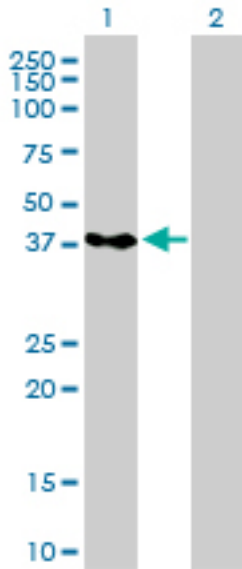
Anti-PCBP2 antibody IHC of human thyroid. Immunohistochemistry of formalin-fixed, paraffin-embedded tissue after heat-induced antigen retrieval. Antibody LS-B4392 concentration 5 ug/ml.

**Immunofluorescence Image:**



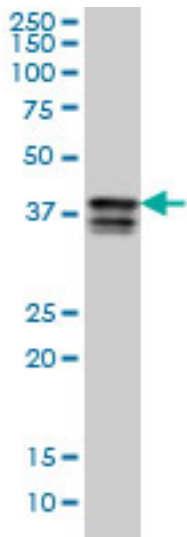
Immunofluorescence of monoclonal antibody to PCBP2 on HeLa cell (antibody concentration 10 ug/ml).

**Western Blot Image:**



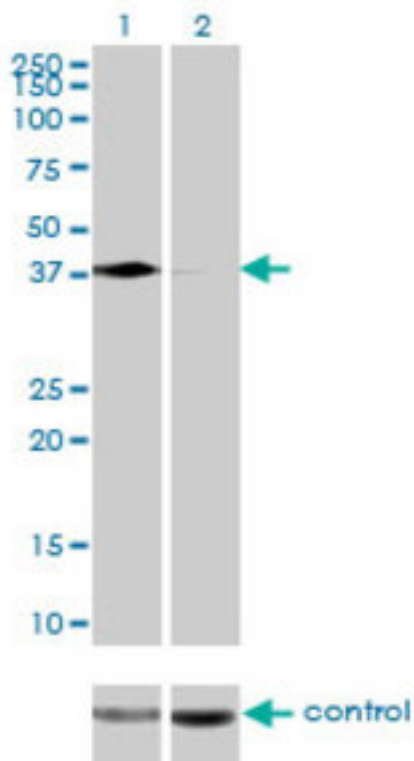
Western blot of PCBP2 expression in transfected 293T cell line by PCBP2 monoclonal antibody clone 5F12.

**Western Blot Image:**



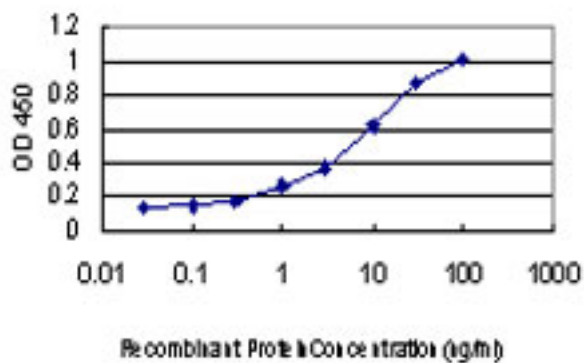
PCBP2 monoclonal antibody clone 5F12 Western blot of PCBP2 expression in K-562.

**RNA interference Image:**



Western blot of PCBP2 over-expressed 293 cell line, cotransfected with PCBP2 Validated Chimera RNAi (Lane 2) or non-transfected control (Lane 1). Blot probed with PCBP2 monoclonal antibody clone 5F12. GAPDH ( 36.1 kD ) used as specificity.

**ELISA Image:**



Detection limit for recombinant GST tagged PCBP2 is approximately 0.1 ng/ml as a capture antibody.

Requested From:

Japan

Laboratory Reagent For In Vitro Research Use Only

Not for resale without prior written consent from LifeSpan BioSciences, Inc.

Created on 9/23/2014

© 2014 LifeSpan BioSciences