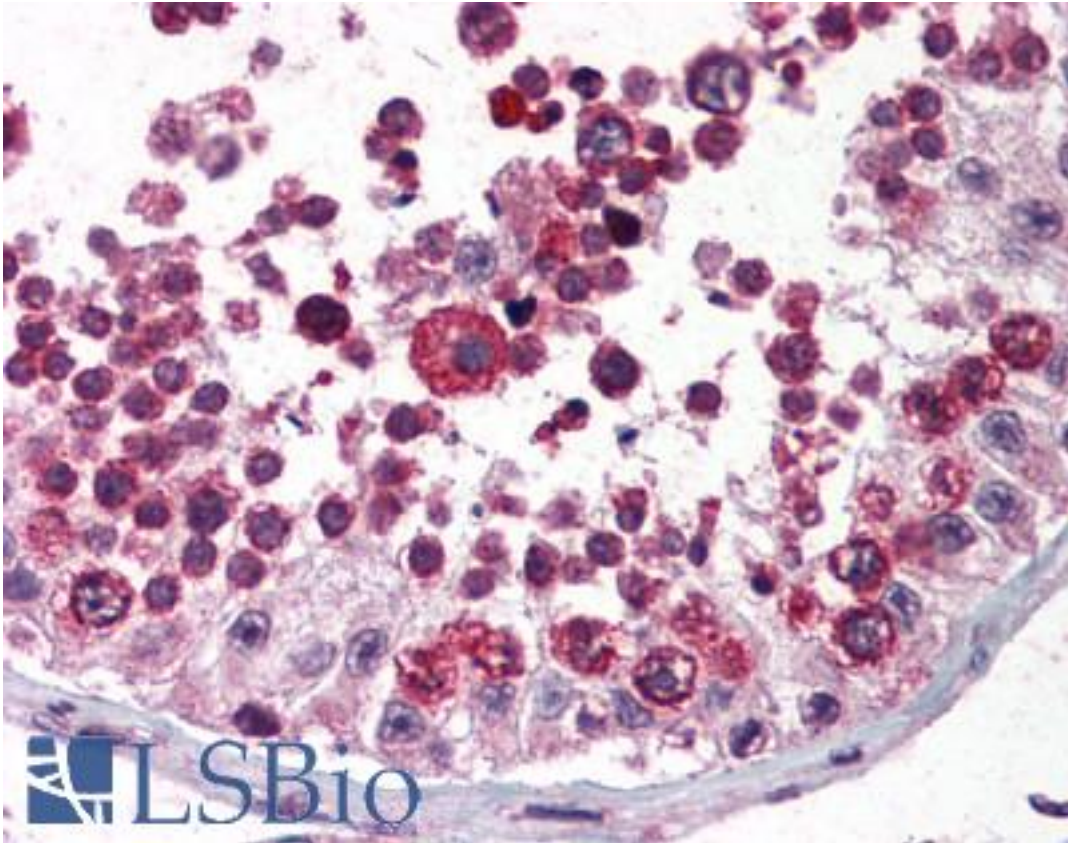


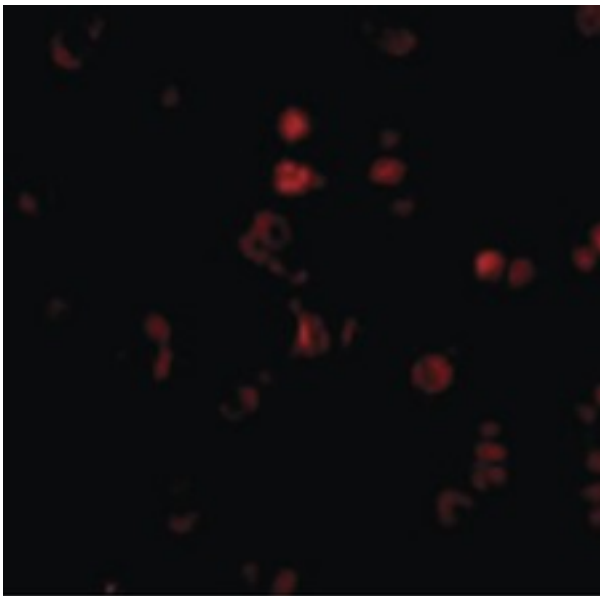
AATF Rabbit anti-Human Polyclonal (C-Terminus) Antibody - LS-B438 - LSBio	
CatalogID:	LS-B438
Validation:	This antibody replaces catalog number LS-C19470. It has been validated for use in the following assays: IHC.
Target:	apoptosis antagonizing transcription factor (AATF)
Synonyms:	AATF Antibody, CHE1 Antibody, DED Antibody, Rb-binding protein Che-1 Antibody, CHE-1 Antibody, Protein AATF Antibody
Family / Subfamily:	Transcription factor / not assigned-Transcription factor
Host	AATF antibody was produced in Rabbit
Clonality:	Polyclonal
Immunogen Species:	AATF antibody was raised against Human
Antigen Type:	Synthetic peptide
Immunogen:	AATF antibody was raised against synthetic peptide from human AATF.
Specificity:	12 amino acid peptide from near the carboxy terminus of human AATF
Epitope:	C-Terminus
Reactivity:	Human, Mouse
Purification:	Purified IgG
Presentation:	PBS, 0.02% sodium azide.
Recommended Storage:	Short term 4°C, long term aliquot and store at -20°C, avoid freeze thaw cycles. Store undiluted.
Usage Summary:	Immunohistochemistry: LS-B438 was validated for use in immunohistochemistry on a panel of 21 formalin-fixed, paraffin-embedded (FFPE) human tissues after heat induced antigen retrieval in pH 6.0 citrate buffer. After incubation with the primary antibody, slides were incubated with biotinylated secondary antibody, followed by alkaline phosphatase-streptavidin and chromogen. The stained slides were evaluated by a pathologist to confirm staining specificity. The optimal working concentration for LS-B438 was determined to be 2.5 ug/ml.
Uses:	IHC - Paraffin (2.5 µg/ml), Western blot (Optimal dilution to be determined by the researcher)
Size:	50 µg
Concentration:	1 mg/ml

Immunohistochemistry Image:



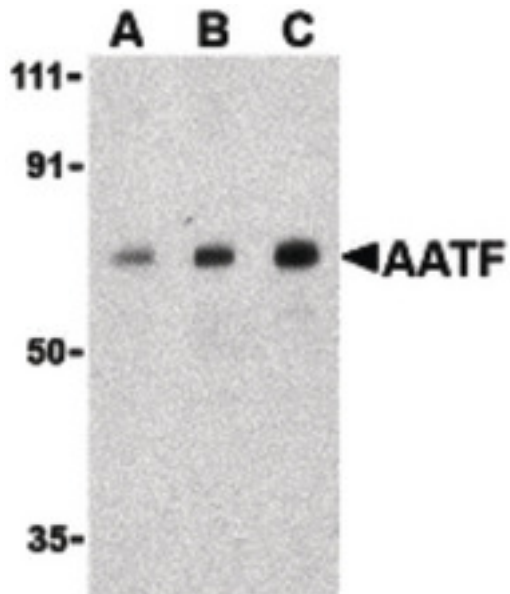
Anti-AATF antibody IHC of human testis. Immunohistochemistry of formalin-fixed, paraffin-embedded tissue after heat-induced antigen retrieval. Antibody LS-B438 concentration 5 ug/ml.

Immunofluorescence Image:



Immunofluorescence of AATF in Human Small Intestine cells with AATF antibody at 20 ug/ml.

Western Blot Image:



Western blot of AATF in human small intestine cell lysate with AATF antibody at (A) 0.5, (B) 1 and (C) 2 ug/ml.

Requested From:

Japan

Laboratory Reagent For In Vitro Research Use Only

Not for resale without prior written consent from LifeSpan BioSciences, Inc.

Created on 9/23/2014

© 2014 LifeSpan BioSciences