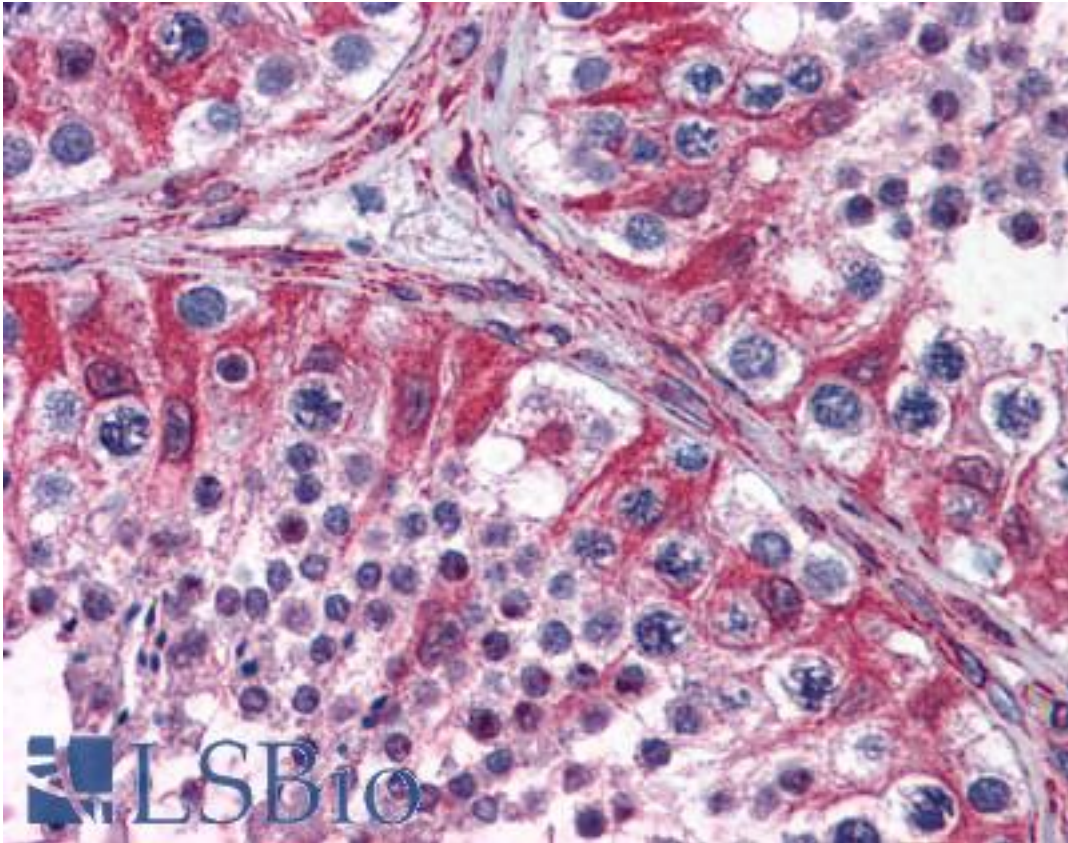


PACE4 / PCSK6 Goat anti-Human Polyclonal (Internal) Antibody - LS-B4378 - LSBio

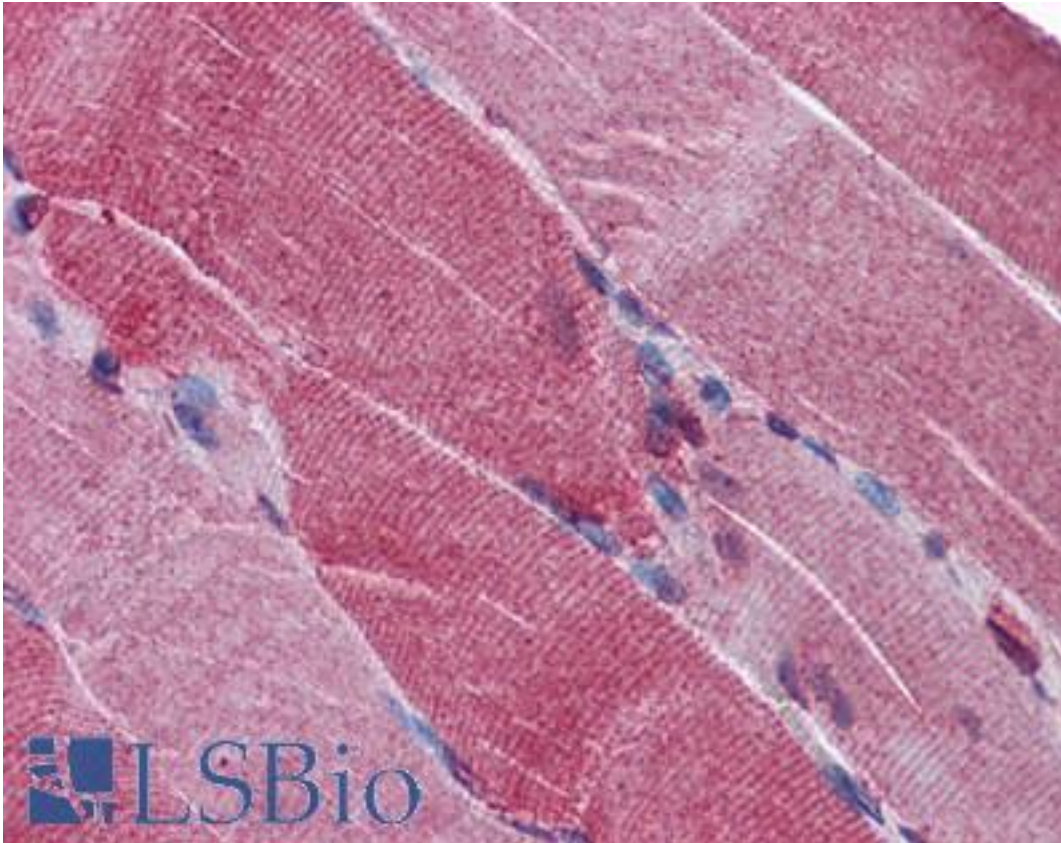
CatalogID:	LS-B4378
Validation:	This antibody replaces catalog number LS-C87369. It has been validated for use in the following assays: IHC-P.
Target:	proprotein convertase subtilisin/kexin type 6 (PCSK6)
Synonyms:	PCSK6 Antibody, PACE4 Antibody, SPC4 Antibody
Family / Subfamily:	Protease / Serine S8
Host	PCSK6 antibody was produced in Goat
Clonality:	Polyclonal
Immunogen Species:	PACE4 / PCSK6 antibody was raised against Human
Antigen Type:	Synthetic peptide
Immunogen:	PACE4 / PCSK6 antibody was raised against synthetic peptide PDCEPGTYFDSE from an internal region of human PCSK6 / PACE4 (NP_002561.1; NP_612192.1; NP_612195.1; NP_612197.1; NP_612196.1; NP_612198.2; NP_612193.1; NP_612194.1). Percent identity by BLAST analysis: Human, Gorilla, Gibbon, Monkey, Marmoset, Mouse, Rat, Elephant, Bovine, Dog, Bat, Horse, Rabbit, Pig (100%); Panda (92%); Platypus, Poplar (83%).
Specificity:	Human PCSK6 / PACE4. This antibody is expected to recognize reported isoforms a, b, g, h (NP_002561.1; NP_612192.1; NP_612193.1; NP_612194.1 resp.).
Epitope:	Internal
Reactivity:	Human, Gorilla, Gibbon, Monkey, Mouse, Rat, Bat, Bovine, Dog, Horse, Pig, Rabbit
Purification:	Immunoaffinity purified
Presentation:	Tris-buffered saline, pH 7.3, 0.5% BSA, 0.02% sodium azide
Recommended Storage:	Store at -20°C. Minimize freezing and thawing.
Usage Summary:	Peptide ELISA: antibody detection limit dilution 1:8000. Western Blot: Preliminary experiments gave an approx. 70kD band in Human, Mouse and Rat Liver lysates after 1 ug/ml antibody staining. Please note that currently we cannot find an explanation in the literature for the band we observe given the calculated sizes of 105 to 107kD according to NP_002561.1, NP_612192.1, NP_612193.1 and NP_612194.1. The 70kD band was successfully blocked by incubation with the immunizing peptide. We would appreciate any feedback from people in the field - have any results been reported with other antibodies / lysates? Have any further splice variants / modified forms been reported?
Uses:	IHC - Paraffin (3.75 µg/ml), ELISA (1:8000) (Optimal dilution to be determined by the researcher)
Size:	50 µg
Concentration:	0.5 mg/ml

Immunohistochemistry Image:



Anti-PACE4 antibody IHC of human testis. Immunohistochemistry of formalin-fixed, paraffin-embedded tissue after heat-induced antigen retrieval. Antibody LS-B4378 concentration 3.75 ug/ml.

Immunohistochemistry Image:



Anti-PACE4 antibody IHC of human skeletal muscle. Immunohistochemistry of formalin-fixed, paraffin-embedded tissue after heat-induced antigen retrieval. Antibody LS-B4378 concentration 3.75 ug/ml.

Requested From:

Japan

Laboratory Reagent For In Vitro Research Use Only

Not for resale without prior written consent from LifeSpan BioSciences, Inc.

Created on 9/23/2014

© 2014 LifeSpan BioSciences