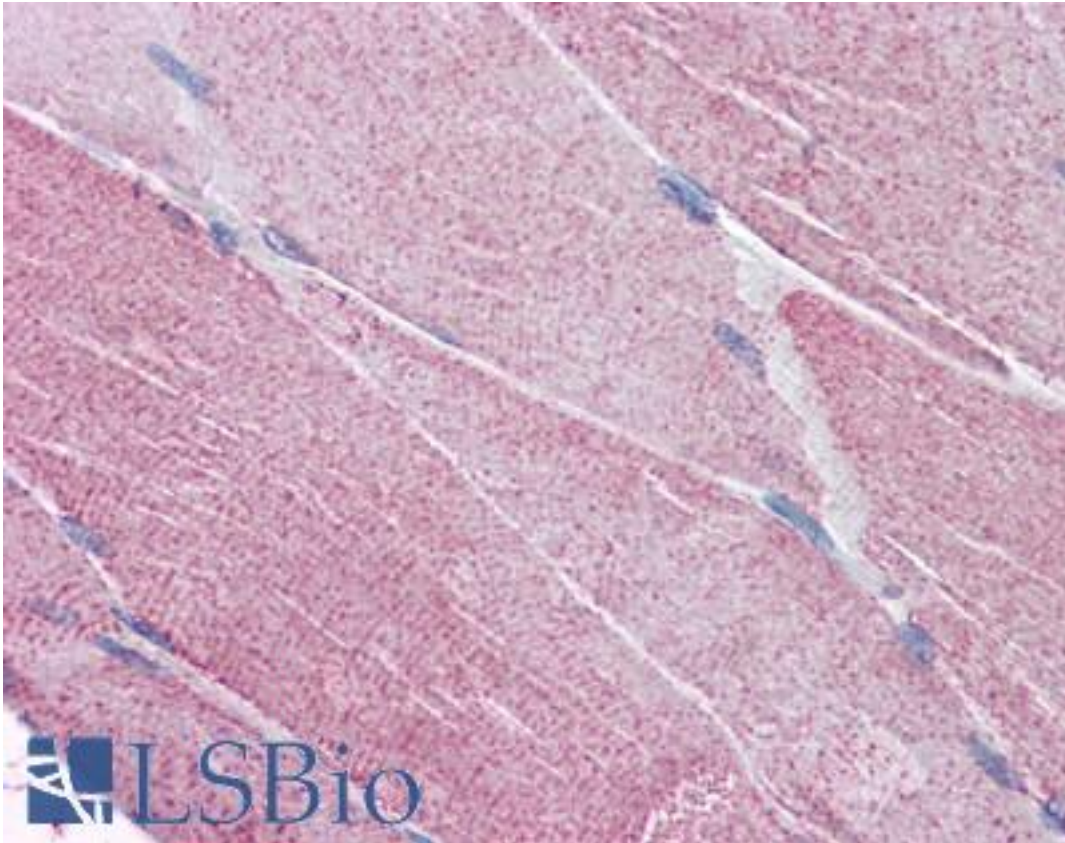


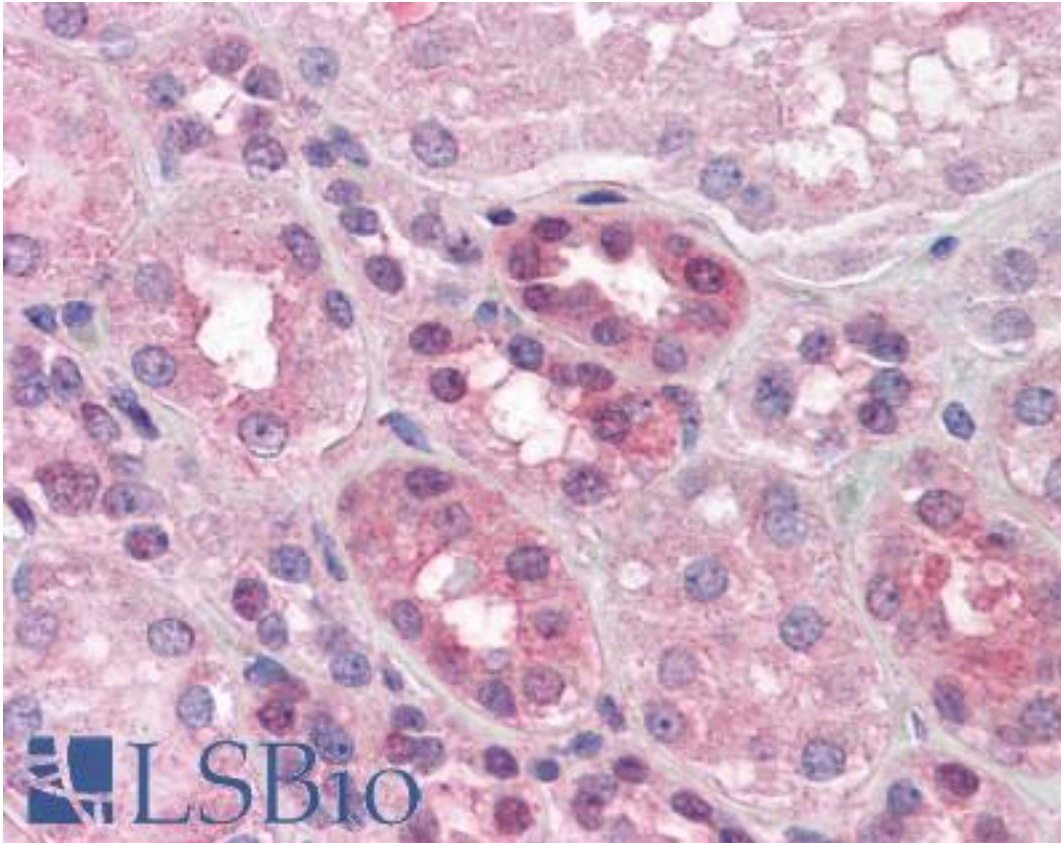
| PACE4 / PCSK6 Goat anti-Human Polyclonal (Internal) Antibody - LS-B4377 - LSBio | |
|---|---|
| CatalogID: | LS-B4377 |
| Validation: | This antibody replaces catalog number LS-C87352. It has been validated for use in the following assays: IHC-P. |
| Target: | proprotein convertase subtilisin/kexin type 6 (PCSK6) |
| Synonyms: | PCSK6 Antibody, PACE4 Antibody, SPC4 Antibody |
| Family / Subfamily: | Protease / Serine S8 |
| Host | PCSK6 antibody was produced in Goat |
| Clonality: | Polyclonal |
| Immunogen Species: | PACE4 / PCSK6 antibody was raised against Human |
| Antigen Type: | Synthetic peptide |
| Immunogen: | PACE4 / PCSK6 antibody was raised against synthetic peptide C-YHTFSAHQSRSR from an internal region of human PCSK6 / PACE4 (NP_002561.1; NP_612192.1; NP_612195.1; NP_612197.1; NP_612196.1; NP_612198.2; NP_612193.1; NP_612194.1). Percent identity by BLAST analysis: Human, Gorilla, Gibbon, Monkey, Rabbit (100%); Marmoset (92%); Mouse, Rat, Elephant, Panda, Bovine, Dog, Horse, Pig, Opossum (83%). |
| Specificity: | Human PCSK6 / PACE4. This antibody is expected to recognize reported isoforms a, b, g and h (NP_002561.1; NP_612192.1; NP_612193.1; NP_612194.1 resp.). |
| Epitope: | Internal |
| Reactivity: | Human, Gorilla, Gibbon, Rabbit |
| Predicted Reactivity: | Monkey |
| Purification: | Immunoaffinity purified |
| Presentation: | Tris-buffered saline, pH 7.3, 0.5% BSA, 0.02% sodium azide |
| Recommended Storage: | Store at -20°C. Minimize freezing and thawing. |
| Usage Summary: | Peptide ELISA: antibody detection limit dilution 1:32000. Western Blot: Preliminary experiments gave an approx 40-45 kD band in Human Brain (Cerebellum) lysates after 0.2 ug/ml antibody staining. Please note that currently we cannot find an explanation in the literature for the band we observe given the calculated size of 106 kD according to NP_002561.1. The 40-45 kD band was successfully blocked by incubation with the immunizing peptide. We would appreciate any feedback from people in the field - have any results been reported with other antibodies / lysates? Have any further splice variants / modified forms been reported? |
| Uses: | IHC - Paraffin (5 µg/ml), ELISA (1:32000) (Optimal dilution to be determined by the researcher) |
| Size: | 50 µg |
| Concentration: | 0.5 mg/ml |

Immunohistochemistry Image:



Anti-PACE4 antibody IHC of human skeletal muscle. Immunohistochemistry of formalin-fixed, paraffin-embedded tissue after heat-induced antigen retrieval. Antibody LS-B4377 concentration 5 ug/ml.

Immunohistochemistry Image:



Anti-PACE4 antibody IHC of human kidney. Immunohistochemistry of formalin-fixed, paraffin-embedded tissue after heat-induced antigen retrieval. Antibody LS-B4377 concentration 5 ug/ml.

Requested From:

Japan

Laboratory Reagent For In Vitro Research Use Only

Not for resale without prior written consent from LifeSpan BioSciences, Inc.

Created on 9/23/2014

© 2014 LifeSpan BioSciences