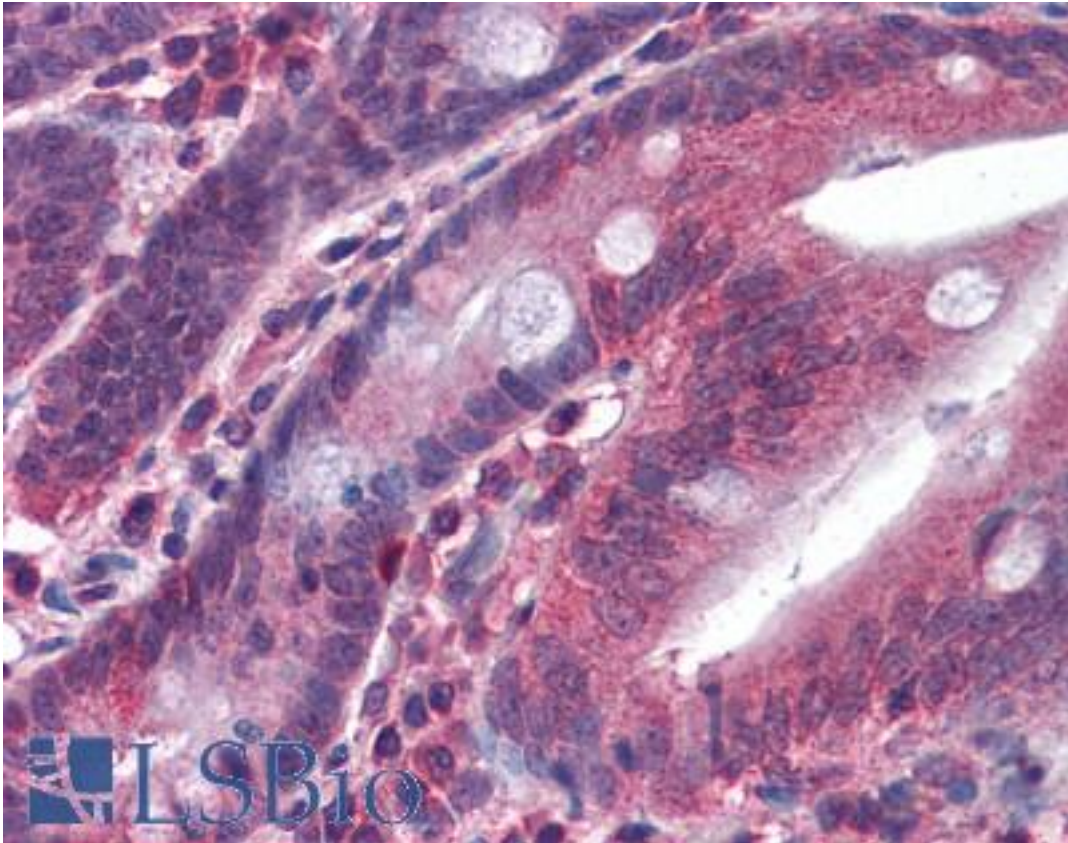


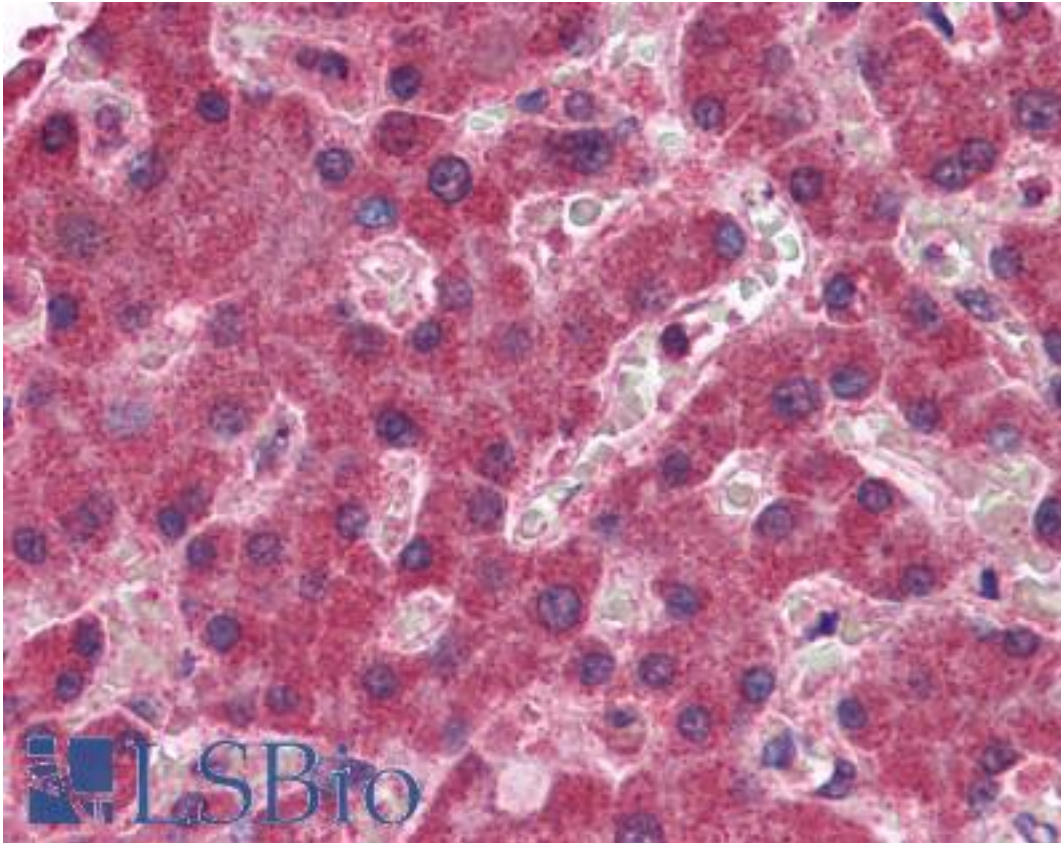
MGLL / MGL Goat anti-Human Polyclonal (Internal) Antibody - LS-B4376 - LSBio	
CatalogID:	LS-B4376
Validation:	This antibody replaces catalog number LS-C55114. It has been validated for use in the following assays: IHC-P.
Target:	monoglyceride lipase (MGLL)
Synonyms:	MGLL Antibody, HUK5 Antibody, Lysophospholipase homolog Antibody, MGL Antibody, Monoacylglycerol lipase Antibody, HU-K5 Antibody, Lysophospholipase-like Antibody, MAGL Antibody, Monoglyceride lipase Antibody
Host	MGLL antibody was produced in Goat
Clonality:	Polyclonal
Immunogen Species:	MGLL / MGL antibody was raised against Human
Antigen Type:	Synthetic peptide
Immunogen:	MGLL / MGL antibody was raised against synthetic peptide C-QDLPHLVNADGQY from an internal region (near N-terminus) of human MGLL (NP_009214.1; NP_001003794.1). Percent identity by BLAST analysis: Human, Gorilla, Gibbon, Monkey, Marmoset, Mouse, Rat, Hamster, Panda, Rabbit (100%); Dog, Pig, Opossum (92%); Horse (85%).
Specificity:	Human MGLL. This antibody is expected to recognize both reported isoforms (NP_009214.1; NP_001003794.1).
Epitope:	Internal
Reactivity:	Human, Gorilla, Gibbon, Monkey, Mouse, Rat, Hamster, Rabbit
Predicted Reactivity:	Dog, Pig
Purification:	Immunoaffinity purified
Presentation:	Tris-buffered saline, pH 7.3, 0.5% BSA, 0.02% sodium azide
Recommended Storage:	Store at -20°C. Minimize freezing and thawing.
Uses:	IHC - Paraffin (3.75 µg/ml), Western blot (0.5 - 1.5 µg/ml), ELISA (1:32000) (Optimal dilution to be determined by the researcher)
Size:	50 µg
Concentration:	0.5 mg/ml

Immunohistochemistry Image:



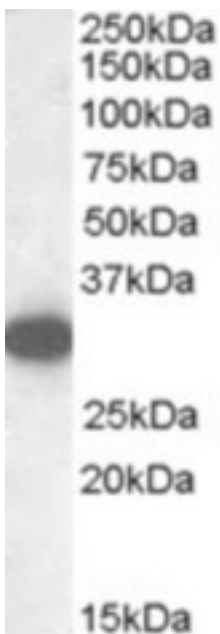
Anti-MGLL antibody IHC of human small intestine. Immunohistochemistry of formalin-fixed, paraffin-embedded tissue after heat-induced antigen retrieval. Antibody LS-B4376 concentration 3.75 ug/ml.

Immunohistochemistry Image:



Anti-MGLL antibody IHC of human liver. Immunohistochemistry of formalin-fixed, paraffin-embedded tissue after heat-induced antigen retrieval. Antibody LS-B4376 concentration 3.75 ug/ml.

Western Blot Image:



Antibody (0.5 ug/ml) staining of Human Adipose lysate (35 ug protein in RIPA buffer). Primary incubation was 1 hour. Detected by chemiluminescence.

Requested From:	Japan
Laboratory Reagent For In Vitro Research Use Only	
Not for resale without prior written consent from LifeSpan BioSciences, Inc.	
Created on 9/23/2014	
© 2014 LifeSpan BioSciences	