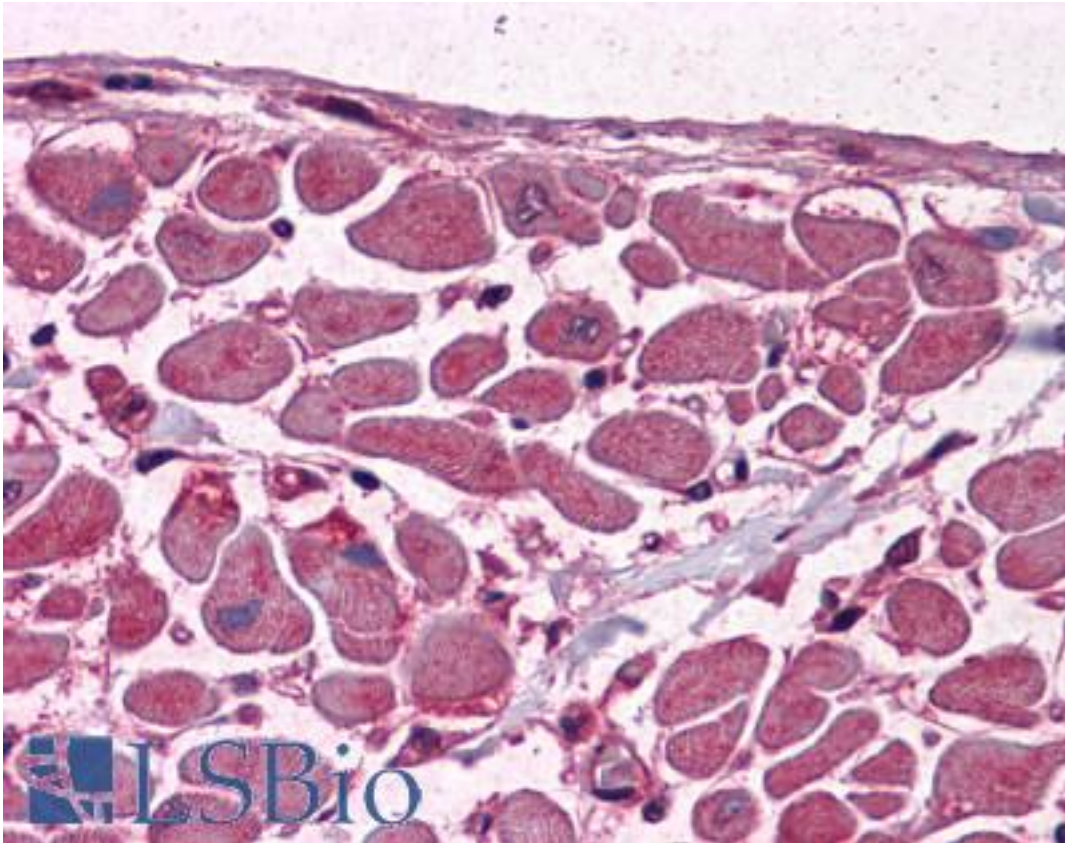


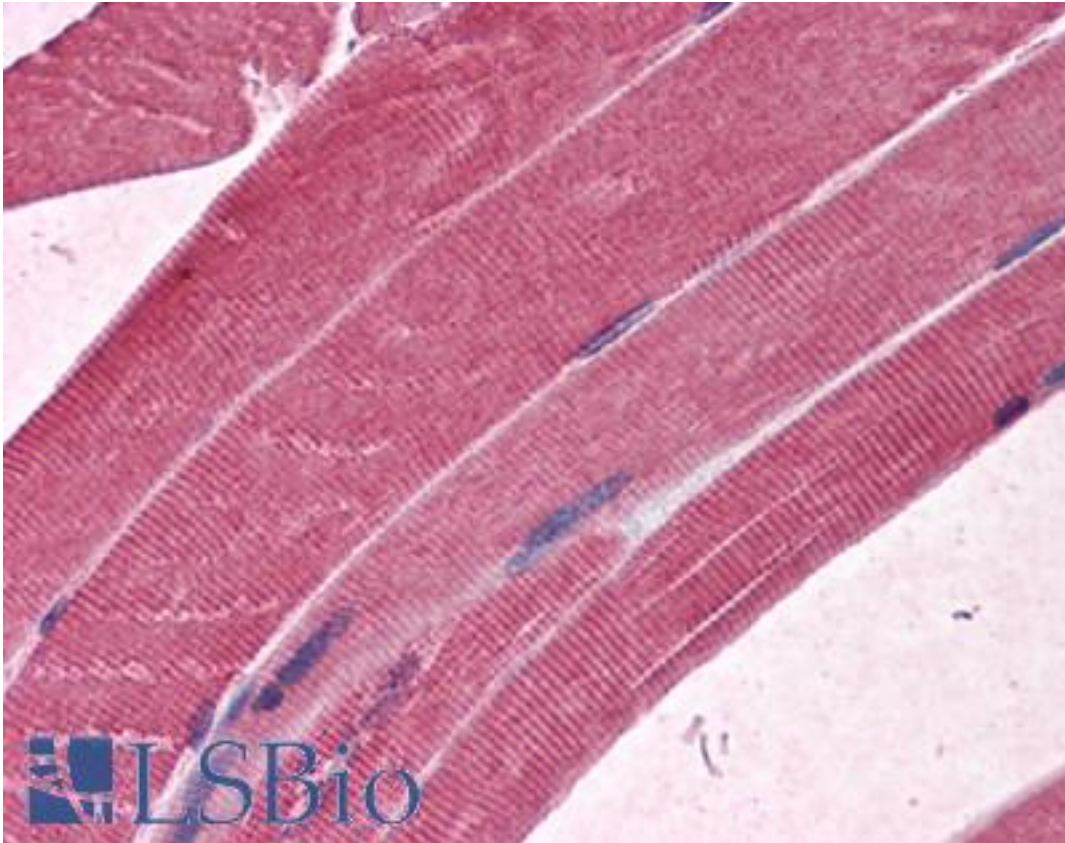
MBNL1 / MBNL Mouse anti-Human Monoclonal (3E7) Antibody - LS-B4372 - LSBio	
CatalogID:	LS-B4372
Validation:	This antibody replaces catalog number LS-C104991. It has been validated for use in the following assays: IHC-P.
Target:	muscleblind-like splicing regulator 1 (MBNL1)
Synonyms:	MBNL1 Antibody, EXP35 Antibody, EXP40 Antibody, KIAA0428 Antibody, Muscleblind (Drosophila)-like Antibody, Muscleblind-like protein 1 Antibody, MBNL Antibody, EXP Antibody, EXP42 Antibody, Muscleblind-like (Drosophila) Antibody
Host	MBNL1 antibody was produced in Mouse
Clonality:	Monoclonal
Isotype:	IgG2a,k
Clone Name:	3E7
Immunogen Species:	MBNL1 / MBNL antibody was raised against Human
Antigen Type:	Recombinant protein
Immunogen:	MBNL1 / MBNL antibody was raised against mBNL1 (AAH43493, 1 a.a. ~ 383 a.a) full length recombinant protein with GST tag. MW of the GST tag alone is 26 KDa.
Reactivity:	Human
Purification:	Protein A purified
Presentation:	PBS, pH 7.4.
Recommended Storage:	Store at -20°C. Aliquot to avoid freeze/thaw cycles.
Usage Summary:	Western Blot (Cell lysate) - positive control Hela NE. Immunofluorescence (10 ug/ml) - positive control HeLa cells. Sandwich ELISA (Recombinant protein).
Uses:	IHC - Paraffin (5 µg/ml), Immunofluorescence (10 µg/ml), Western blot, ELISA (Optimal dilution to be determined by the researcher)
Size:	50 µg
Concentration:	0.5 mg/ml

Immunohistochemistry Image:



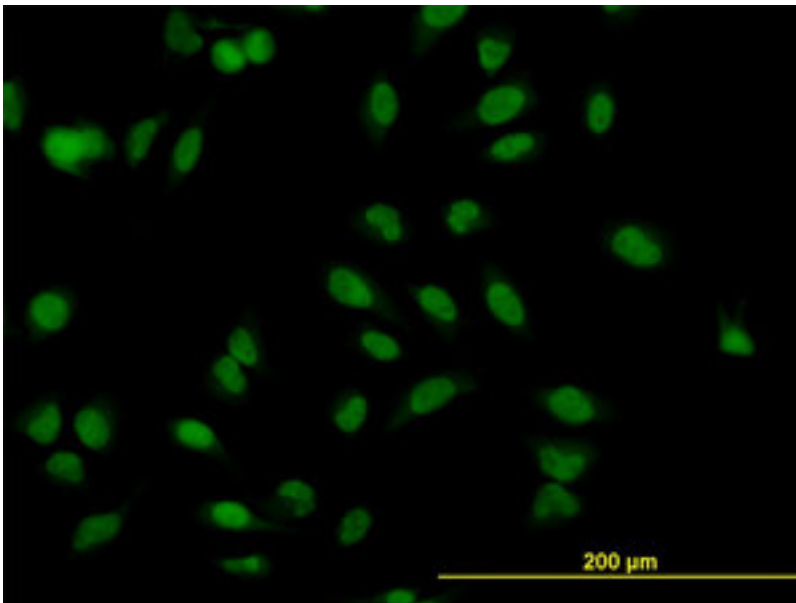
Anti-MBNL1 antibody IHC of human heart. Immunohistochemistry of formalin-fixed, paraffin-embedded tissue after heat-induced antigen retrieval. Antibody LS-B4372 concentration 5 ug/ml.

Immunohistochemistry Image:



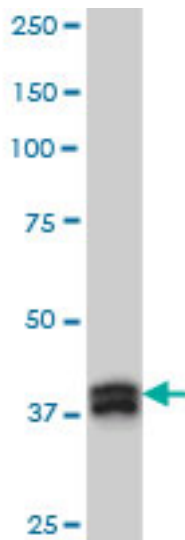
Anti-MBNL1 antibody IHC of human skeletal muscle. Immunohistochemistry of formalin-fixed, paraffin-embedded tissue after heat-induced antigen retrieval. Antibody LS-B4372 concentration 5 ug/ml.

Immunofluorescence Image:



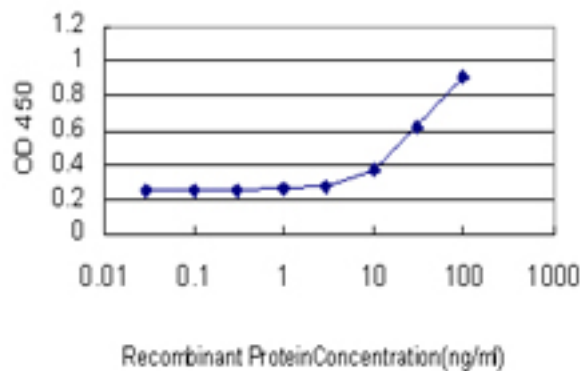
Immunofluorescence of monoclonal antibody to MBNL1 on HeLa cell (antibody concentration 10 ug/ml).

Western Blot Image:



MBNL1 monoclonal antibody clone 3E7 Western blot of MBNL1 expression in HeLa NE.

ELISA Image:



Detection limit for recombinant GST tagged MBNL1 is approximately 3 ng/ml as a capture antibody.

Requested From:

Japan

Laboratory Reagent For In Vitro Research Use Only

Not for resale without prior written consent from LifeSpan BioSciences, Inc.

Created on 9/23/2014

© 2014 LifeSpan BioSciences