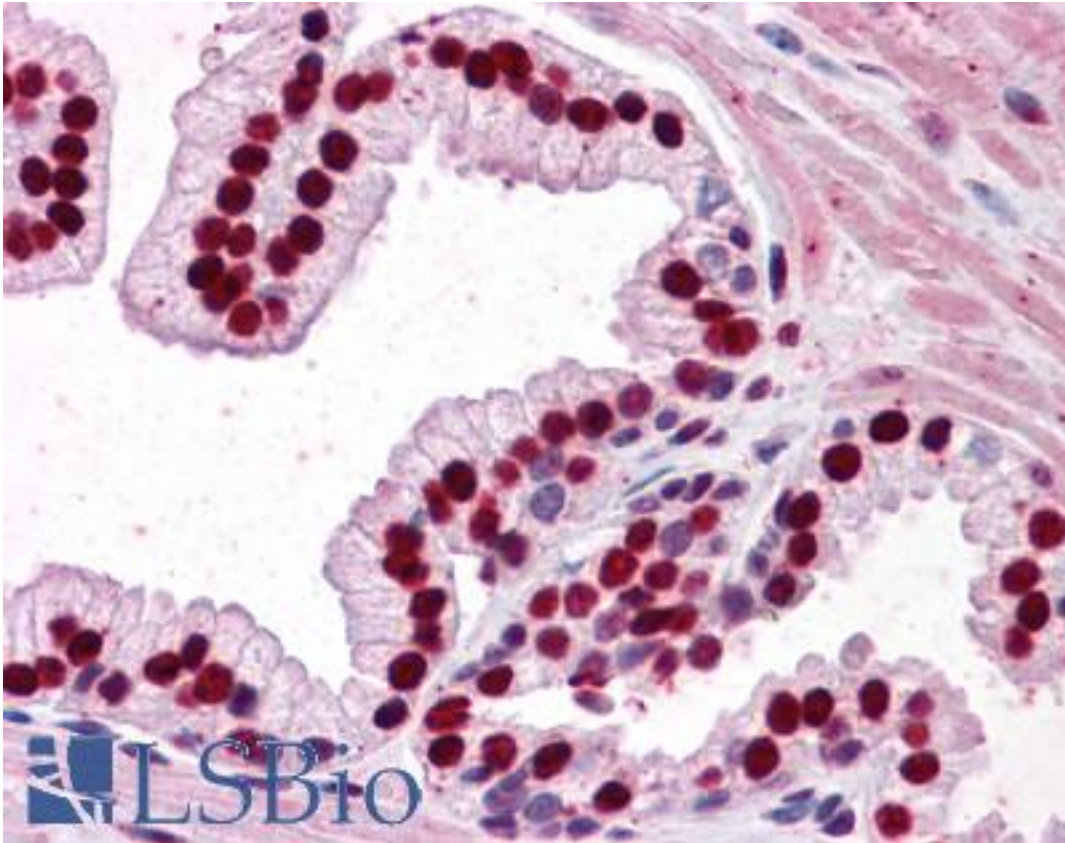


**SMAD6 Mouse anti-Human Monoclonal (1G2) Antibody - LS-B4370 - LSBio**

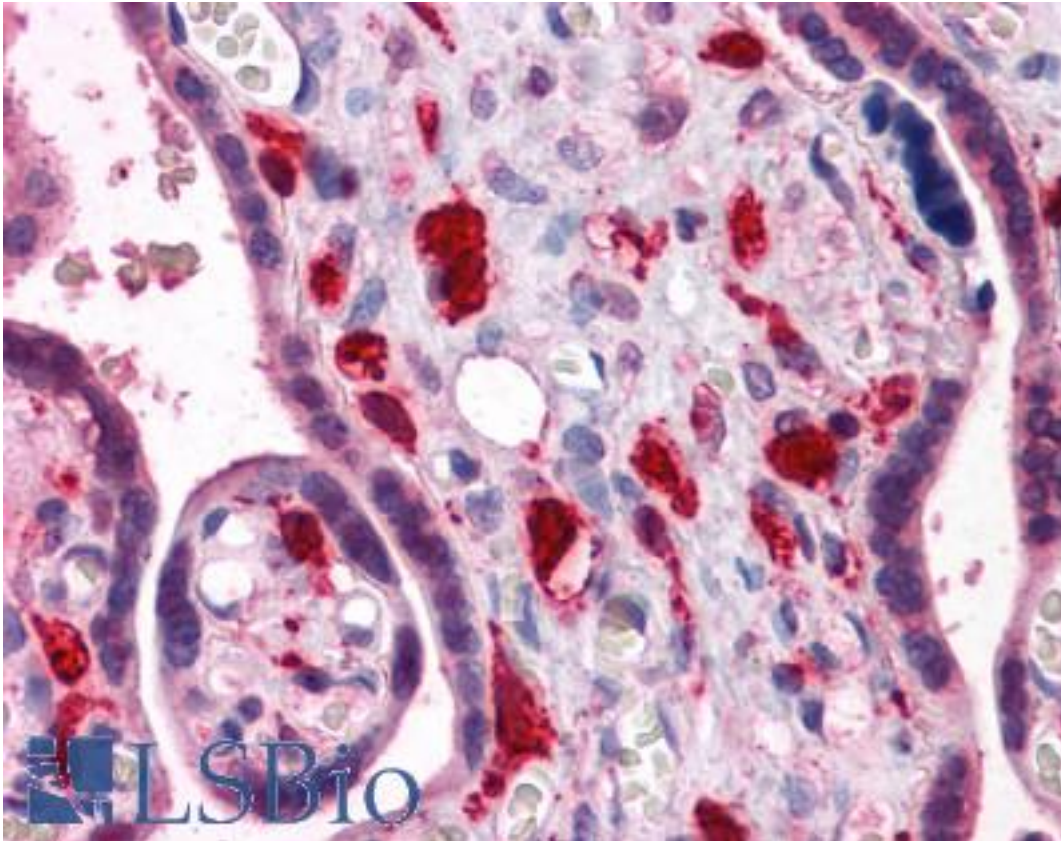
|                             |  |
|-----------------------------|--|
| <b>CatalogID:</b>           | LS-B4370   |
| <b>Validation:</b>          | This antibody replaces catalog number LS-C104989. It has been validated for use in the following assays: IHC-P.  |
| <b>Target:</b>              | SMAD family member 6 (SMAD6)   |
| <b>Synonyms:</b>            | SMAD6 Antibody, AOVD2 Antibody, HSMAD6 Antibody, HsT17432 Antibody, SMAD 6 Antibody, MADH7 Antibody, Mothers against DPP homolog 6 Antibody, SMAD family member 6 Antibody, MAD homolog 6 Antibody, MADH6 Antibody |
| <b>Host</b>                 | SMAD6 antibody was produced in Mouse   |
| <b>Clonality:</b>           | Monoclonal   |
| <b>Isotype:</b>             | IgG2a,k  |
| <b>Clone Name:</b>          | 1G2  |
| <b>Immunogen Species:</b>   | SMAD6 antibody was raised against Human  |
| <b>Antigen Type:</b>        | Recombinant protein  |
| <b>Immunogen:</b>           | SMAD6 antibody was raised against sMAD6 (NP_005576, 285 a.a. ~ 385 a.a) partial recombinant protein with GST tag. MW of the GST tag alone is 26 KDa.   |
| <b>Reactivity:</b>          | Human  |
| <b>Purification:</b>        | Protein A purified   |
| <b>Presentation:</b>        | PBS, pH 7.2  |
| <b>Recommended Storage:</b> | Store at -20°C. Aliquot to avoid freeze/thaw cycles.   |
| <b>Usage Summary:</b>       | Sandwich ELISA (Recombinant protein). Antibody has been tested in WB and ELISA using the immunogenic recombinant protein as the sample.  |
| <b>Uses:</b>                | IHC - Paraffin (5 µg/ml), Western blot, ELISA (Optimal dilution to be determined by the researcher)  |
| <b>Size:</b>                | 50 µg  |
| <b>Concentration:</b>       | 0.48 mg/ml   |

**Immunohistochemistry Image:**



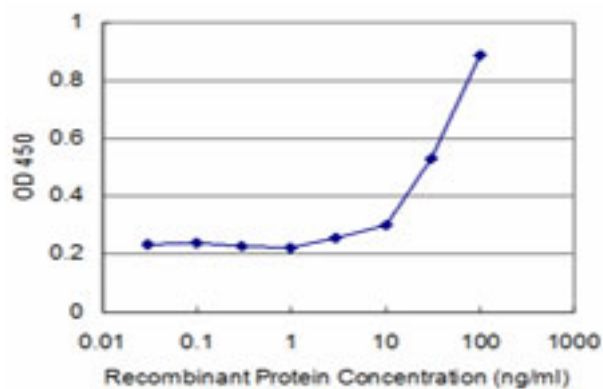
Anti-SMAD6 antibody IHC of human prostate. Immunohistochemistry of formalin-fixed, paraffin-embedded tissue after heat-induced antigen retrieval. Antibody LS-B4370 concentration 5 ug/ml.

**Immunohistochemistry Image:**



Anti-SMAD6 antibody IHC of human placenta. Immunohistochemistry of formalin-fixed, paraffin-embedded tissue after heat-induced antigen retrieval. Antibody LS-B4370 concentration 5 ug/ml.

**ELISA Image:**



Detection limit for recombinant GST tagged SMAD6 is approximately 3 ng/ml as a capture antibody.

Requested From:

Japan

Laboratory Reagent For In Vitro Research Use Only

Not for resale without prior written consent from LifeSpan BioSciences, Inc.

Created on 9/23/2014

© 2014 LifeSpan BioSciences