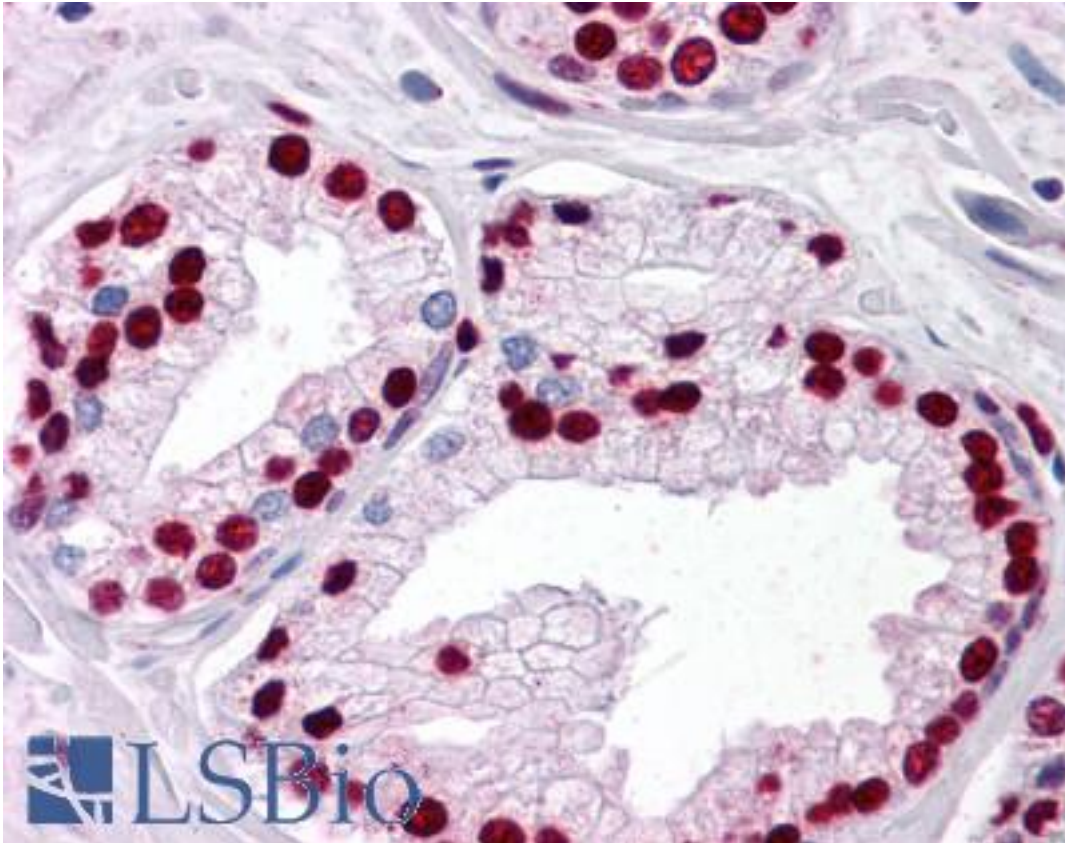


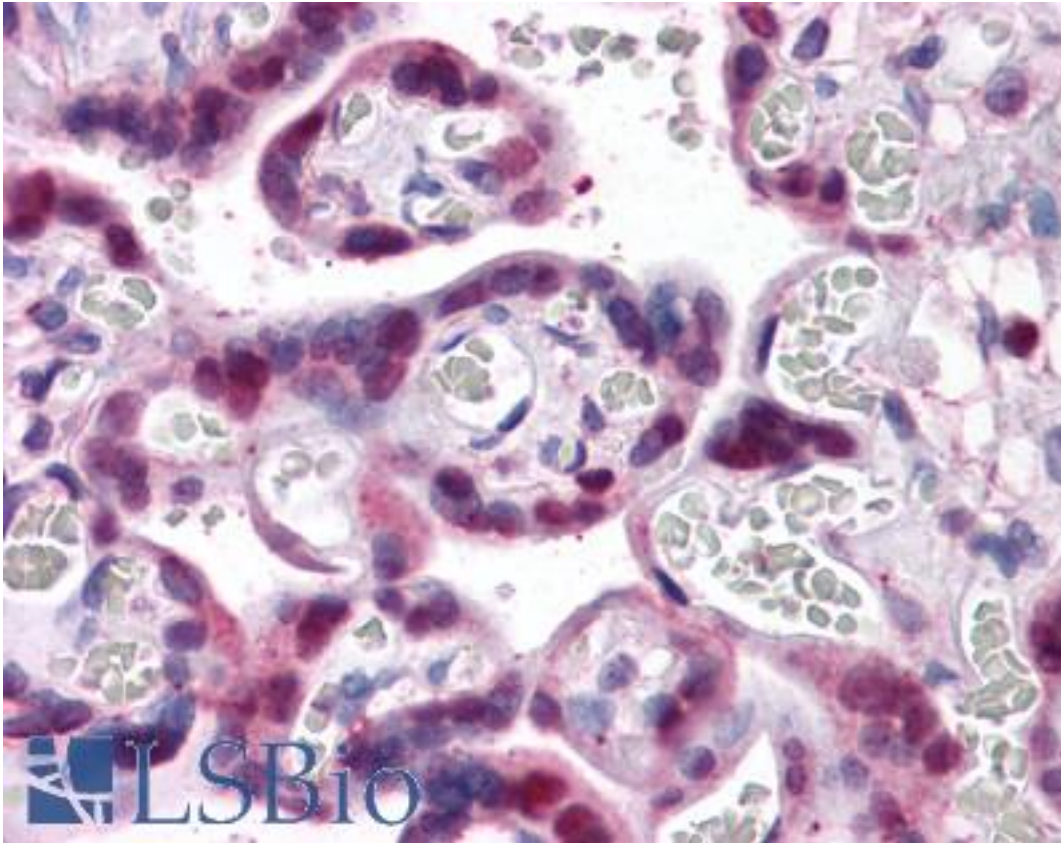
SMAD6 Mouse anti-Human Monoclonal (2A6) Antibody - LS-B4369 - LSBio	
CatalogID:	LS-B4369
Validation:	This antibody replaces catalog number LS-C104988. It has been validated for use in the following assays: IHC-P.
Target:	SMAD family member 6 (SMAD6)
Synonyms:	SMAD6 Antibody, AOVD2 Antibody, HSMAD6 Antibody, HsT17432 Antibody, SMAD 6 Antibody, MADH7 Antibody, Mothers against DPP homolog 6 Antibody, SMAD family member 6 Antibody, MAD homolog 6 Antibody, MADH6 Antibody
Host	SMAD6 antibody was produced in Mouse
Clonality:	Monoclonal
Isotype:	IgG2b,k
Clone Name:	2A6
Immunogen Species:	SMAD6 antibody was raised against Human
Antigen Type:	Recombinant protein
Immunogen:	SMAD6 antibody was raised against sMAD6 (NP_005576, 285 a.a. ~ 385 a.a) partial recombinant protein with GST tag. MW of the GST tag alone is 26 KDa.
Reactivity:	Human
Purification:	Protein A purified
Presentation:	PBS, pH 7.2
Recommended Storage:	Store at -20°C. Aliquot to avoid freeze/thaw cycles.
Usage Summary:	Antibody has been tested in ELISA and Western blot using the recombinant proteing immunogen as the sample.
Uses:	IHC - Paraffin (5 µg/ml), Western blot, ELISA (Optimal dilution to be determined by the researcher)
Size:	50 µg

Immunohistochemistry Image:



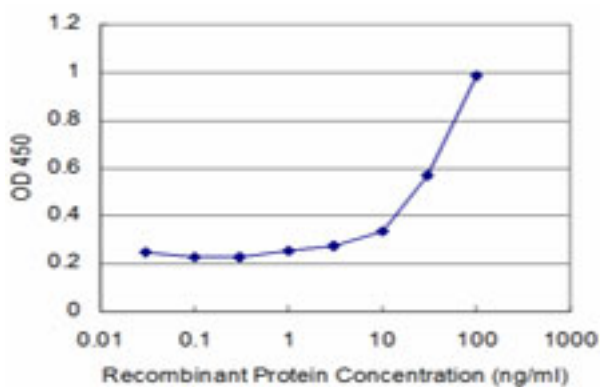
Anti-SMAD6 antibody IHC of human prostate. Immunohistochemistry of formalin-fixed, paraffin-embedded tissue after heat-induced antigen retrieval. Antibody LS-B4369 concentration 5 ug/ml.

Immunohistochemistry Image:



Anti-SMAD6 antibody IHC of human placenta. Immunohistochemistry of formalin-fixed, paraffin-embedded tissue after heat-induced antigen retrieval. Antibody LS-B4369 concentration 5 ug/ml.

ELISA Image:



Detection limit for recombinant GST tagged SMAD6 is approximately 3 ng/ml as a capture antibody.

Requested From:

Japan

Laboratory Reagent For In Vitro Research Use Only

Not for resale without prior written consent from LifeSpan BioSciences, Inc.

Created on 9/23/2014

© 2014 LifeSpan BioSciences