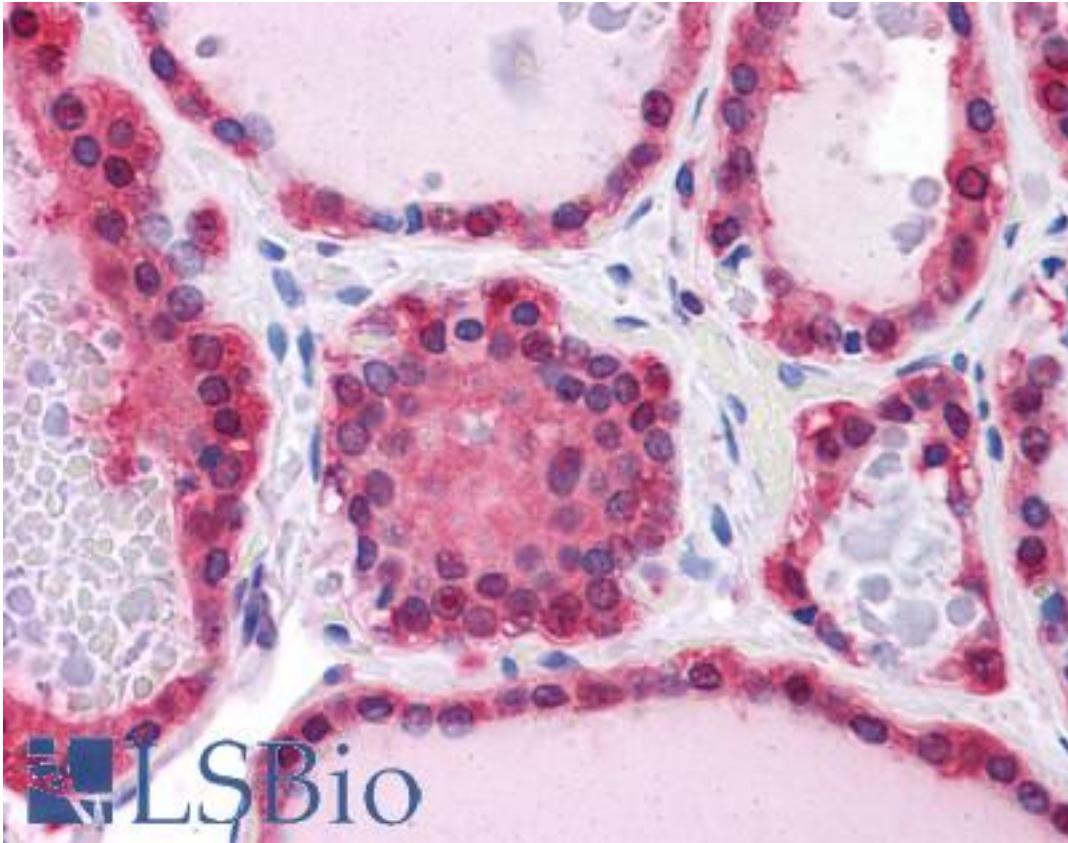


LDHB / LDH-B Mouse anti-Human Monoclonal (2H6) Antibody - LS-B4366 - LSBio

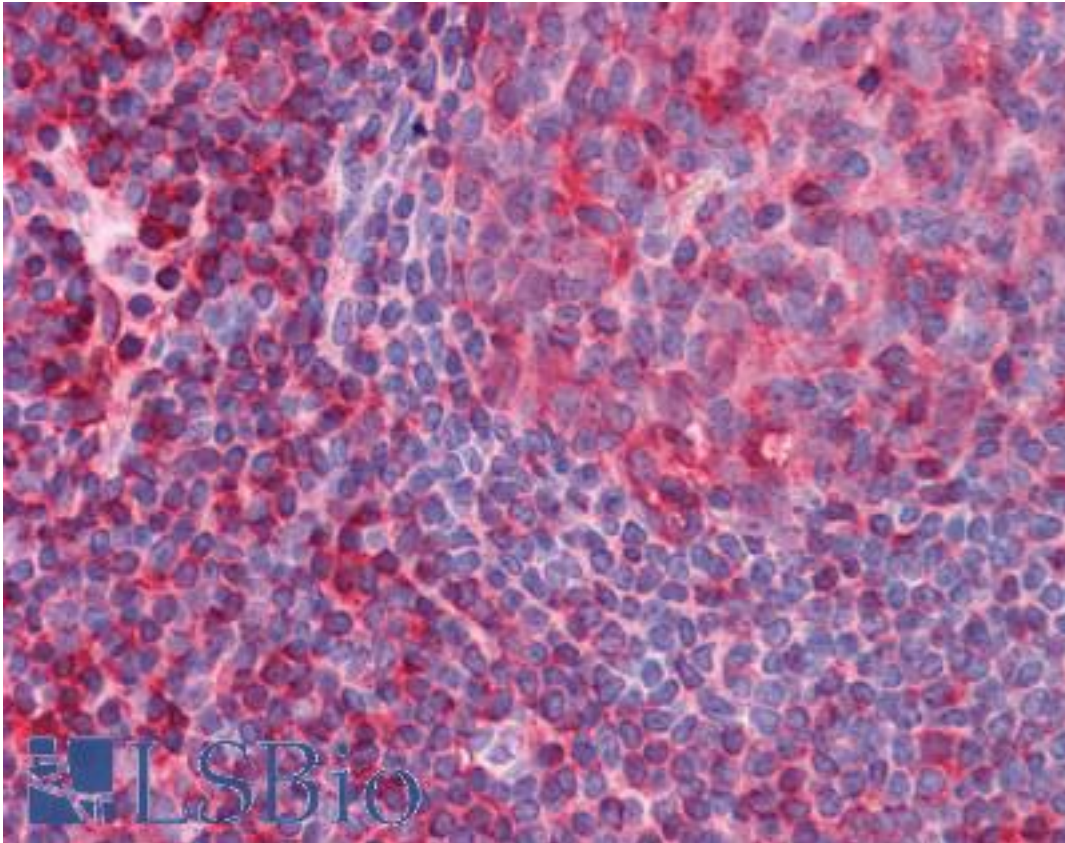
CatalogID:	LS-B4366
Validation:	This antibody replaces catalog number LS-C104984. It has been validated for use in the following assays: IHC-P.
Target:	lactate dehydrogenase B (LDHB)
Synonyms:	LDHB Antibody, LDH heart subunit Antibody, Lactate dehydrogenase H chain Antibody, Lactate dehydrogenase B Antibody, LDH-B Antibody, TRG-5 Antibody, LDH-H Antibody, LDHBD Antibody
Host	LDHB antibody was produced in Mouse
Clonality:	Monoclonal
Isotype:	IgG1,k
Clone Name:	2H6
Immunogen Species:	LDHB / LDH-B antibody was raised against Human
Antigen Type:	Recombinant protein
Immunogen:	LDHB / LDH-B antibody was raised against LDHB (AAH02362, 1 a.a. ~ 335 a.a) full length recombinant protein with GST tag. MW of the GST tag alone is 26 KDa.
Reactivity:	Human
Purification:	Protein A purified
Presentation:	PBS, pH 7.4.
Recommended Storage:	Store at -20°C. Aliquot to avoid freeze/thaw cycles.
Usage Summary:	Western Blot (Cell lysate) - positive control HeLa. Immunofluorescence (10 ug/ml) - positive control HeLa cells. Sandwich ELISA (Recombinant protein).
Uses:	IHC - Paraffin (5 µg/ml), Immunofluorescence (10 µg/ml), Western blot, ELISA (Optimal dilution to be determined by the researcher)
Size:	50 µg
Concentration:	0.5 mg/ml

Immunohistochemistry Image:



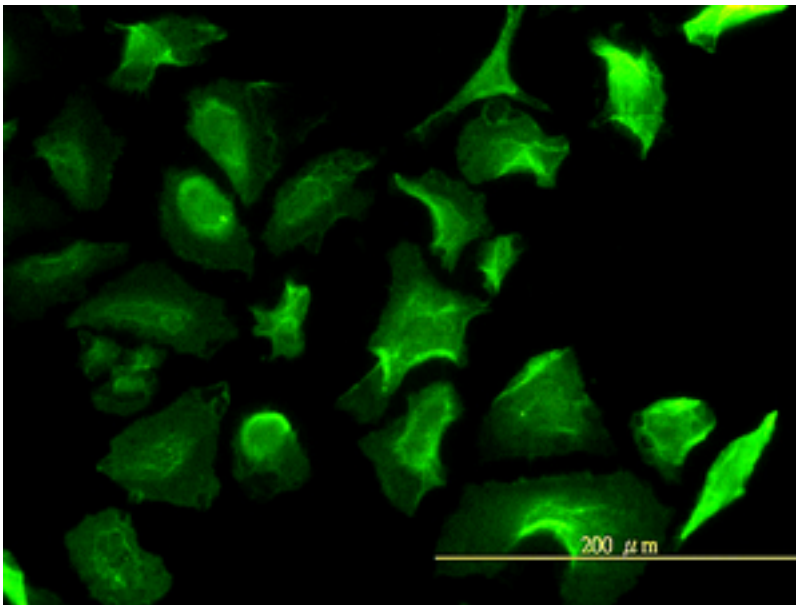
Anti-LDHB antibody IHC of human thyroid. Immunohistochemistry of formalin-fixed, paraffin-embedded tissue after heat-induced antigen retrieval. Antibody LS-B4366 concentration 5 ug/ml.

Immunohistochemistry Image:



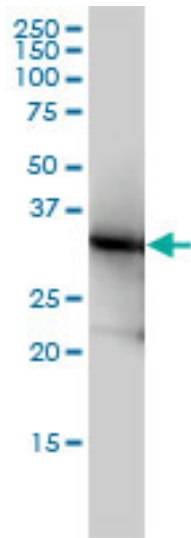
Anti-LDHB antibody IHC of human tonsil. Immunohistochemistry of formalin-fixed, paraffin-embedded tissue after heat-induced antigen retrieval. Antibody LS-B4366 concentration 5 ug/ml.

Immunofluorescence Image:



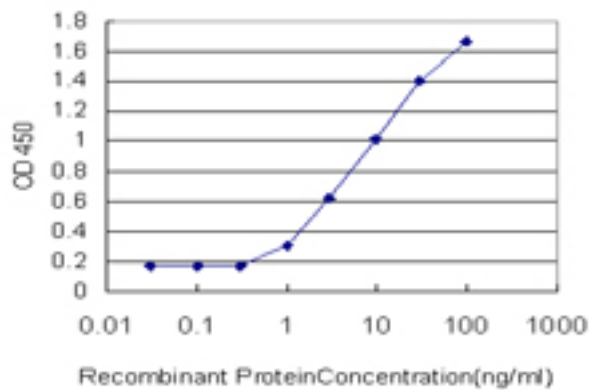
Immunofluorescence of monoclonal antibody to LDHB on HeLa cell (antibody concentration 10 ug/ml).

Western Blot Image:



LDHB monoclonal antibody clone 2H6 Western blot of LDHB expression in HeLa.

ELISA Image:



Detection limit for recombinant GST tagged LDHB is approximately 1 ng/ml as a capture antibody.

Requested From:

Japan

Laboratory Reagent For In Vitro Research Use Only

Not for resale without prior written consent from LifeSpan BioSciences, Inc.

Created on 9/23/2014

© 2014 LifeSpan BioSciences