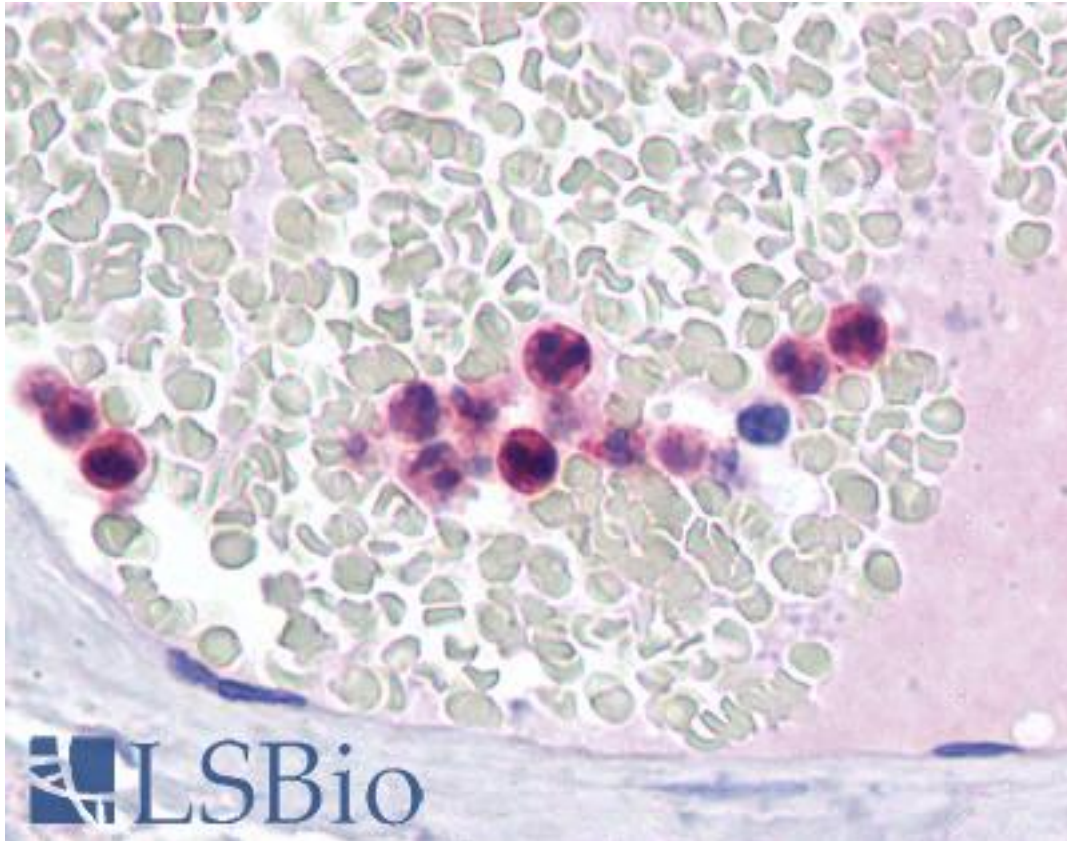


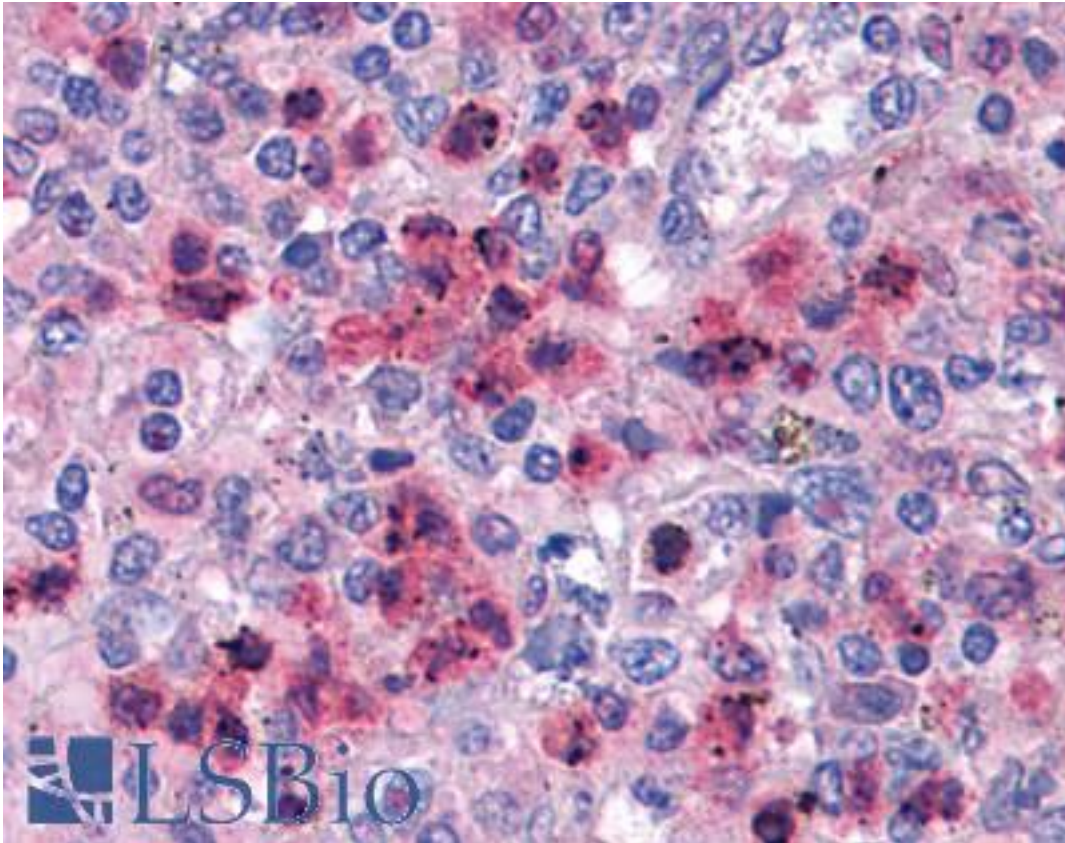
IRF4 / IRF-4 Mouse anti-Human Monoclonal (2F2) Antibody - LS-B4362 - LSBio	
CatalogID:	LS-B4362
Validation:	This antibody replaces catalog number LS-C104980. It has been validated for use in the following assays: IHC-P.
Target:	interferon regulatory factor 4 (IRF4)
Synonyms:	IRF4 Antibody, Interferon regulatory factor 4 Antibody, NF-EM5 Antibody, LSIRF Antibody, IRF-4 Antibody, Multiple myeloma oncogene 1 Antibody
Host	IRF4 antibody was produced in Mouse
Clonality:	Monoclonal
Isotype:	IgG2a,k
Clone Name:	2F2
Immunogen Species:	IRF4 / IRF-4 antibody was raised against Human
Antigen Type:	Recombinant protein
Immunogen:	IRF4 / IRF-4 antibody was raised against iRF4 (NP_002451, 342 a.a. ~ 452 a.a) partial recombinant protein with GST tag. MW of the GST tag alone is 26 KDa.
Reactivity:	Human
Purification:	Protein A purified
Presentation:	PBS, pH 7.4. Sourced in Ascites.
Recommended Storage:	Store at -20°C. Aliquot to avoid freeze/thaw cycles.
Usage Summary:	Western Blot (Transfected lysate) - positive control transfected 293T cell line. Sandwich ELISA (Recombinant protein).
Uses:	IHC - Paraffin (5 µg/ml), Western blot, ELISA (Optimal dilution to be determined by the researcher)
Size:	50 µg
Concentration:	0.45 mg/ml

Immunohistochemistry Image:



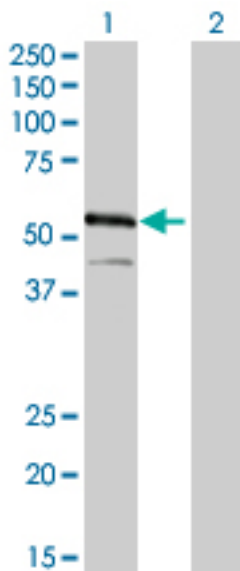
Anti-IRF-4 antibody IHC of human neutrophils. Immunohistochemistry of formalin-fixed, paraffin-embedded tissue after heat-induced antigen retrieval. Antibody LS-B4362 concentration 5 ug/ml.

Immunohistochemistry Image:



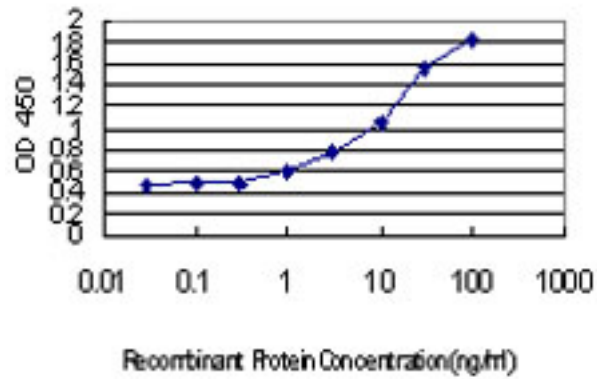
Anti-IRF-4 antibody IHC of human neutrophils. Immunohistochemistry of formalin-fixed, paraffin-embedded tissue after heat-induced antigen retrieval. Antibody LS-B4362 concentration 5 ug/ml.

Western Blot Image:



Western blot of IRF4 expression in transfected 293T cell line by IRF4 monoclonal antibody clone 2F2.

ELISA Image:



Detection limit for recombinant GST tagged IRF4 is approximately 0.03 ng/ml as a capture antibody.

Requested From:

Japan

Laboratory Reagent For In Vitro Research Use Only

Not for resale without prior written consent from LifeSpan BioSciences, Inc.

Created on 9/23/2014

© 2014 LifeSpan BioSciences