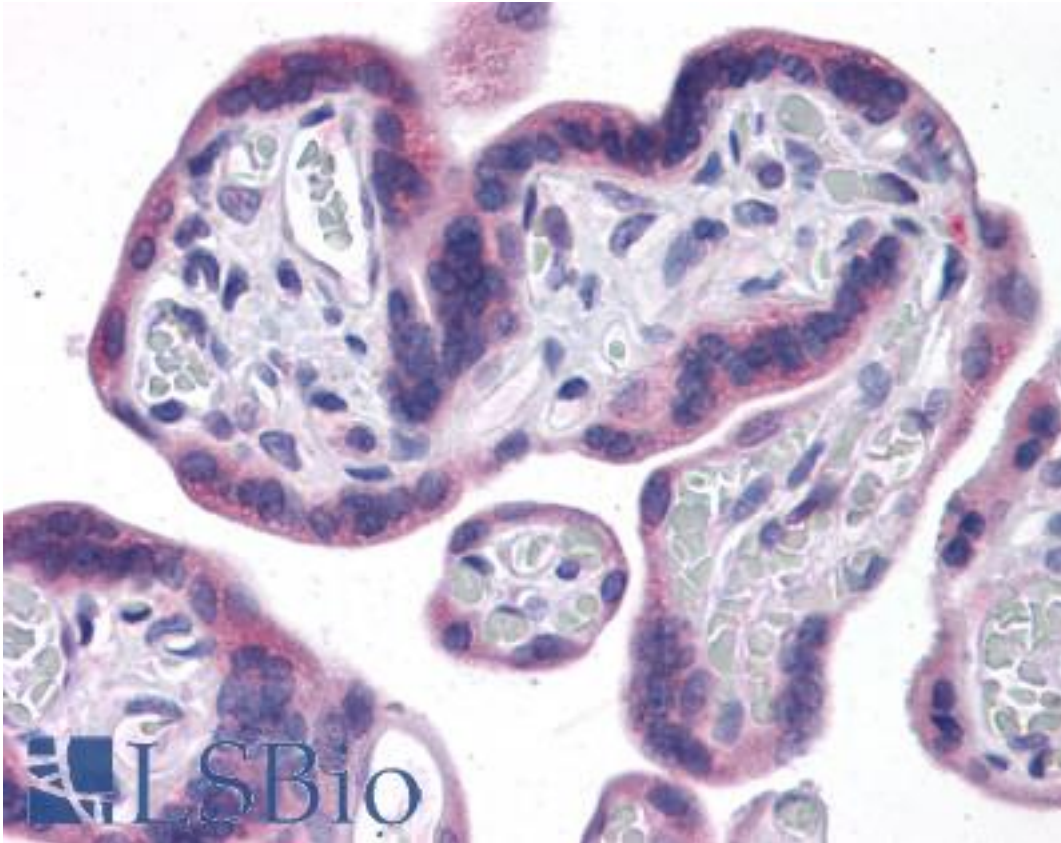


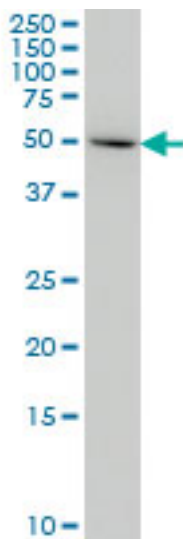
IDO1 / IDO Mouse anti-Human Monoclonal (4D2) Antibody - LS-B4359 - LSBio	
<b>CatalogID:</b>	LS-B4359
<b>Validation:</b>	This antibody replaces catalog number LS-C104977. It has been validated for use in the following assays: IHC-P.
<b>Target:</b>	indoleamine 2,3-dioxygenase 1 (IDO1)
<b>Synonyms:</b>	IDO1 Antibody, IDO Antibody, Indole 2,3-dioxygenase Antibody, Indolamine 2,3 dioxygenase Antibody, IDO-1 Antibody, INDO Antibody, Indoleamine 2,3-dioxygenase Antibody, Indoleamine 2,3-dioxygenase 1 Antibody
<b>Host</b>	IDO1 antibody was produced in Mouse
<b>Clonality:</b>	Monoclonal
<b>Isotype:</b>	IgG2b,k
<b>Clone Name:</b>	4D2
<b>Immunogen Species:</b>	IDO1 / IDO antibody was raised against Human
<b>Antigen Type:</b>	Recombinant protein
<b>Immunogen:</b>	IDO1 / IDO antibody was raised against iNDO (AAH27882, 1 a.a. ~ 404 a.a) full length recombinant protein with GST tag. MW of the GST tag alone is 26 KDa.
<b>Reactivity:</b>	Human
<b>Purification:</b>	Protein A purified
<b>Presentation:</b>	PBS, pH 7.4. Sourced in Ascites.
<b>Recommended Storage:</b>	Store at -20°C. Aliquot to avoid freeze/thaw cycles.
<b>Usage Summary:</b>	Western Blot (Cell lysate) - positive control HeLa.
<b>Uses:</b>	IHC - Paraffin (5 µg/ml), Western blot (1:500 - 1:1000), ELISA (Optimal dilution to be determined by the researcher)
<b>Size:</b>	50 µg
<b>Concentration:</b>	1 mg/ml

**Immunohistochemistry Image:**



Anti-IDO1 / IDO antibody IHC of human placenta. Immunohistochemistry of formalin-fixed, paraffin-embedded tissue after heat-induced antigen retrieval. Antibody LS-B4359 concentration 5 ug/ml.

**Western Blot Image:**



INDO monoclonal antibody clone 4D2 Western blot of INDO expression in HeLa.

**Requested From:**

Japan

Laboratory Reagent For In Vitro Research Use Only

Not for resale without prior written consent from LifeSpan BioSciences, Inc.

Created on 9/23/2014

© 2014 LifeSpan BioSciences