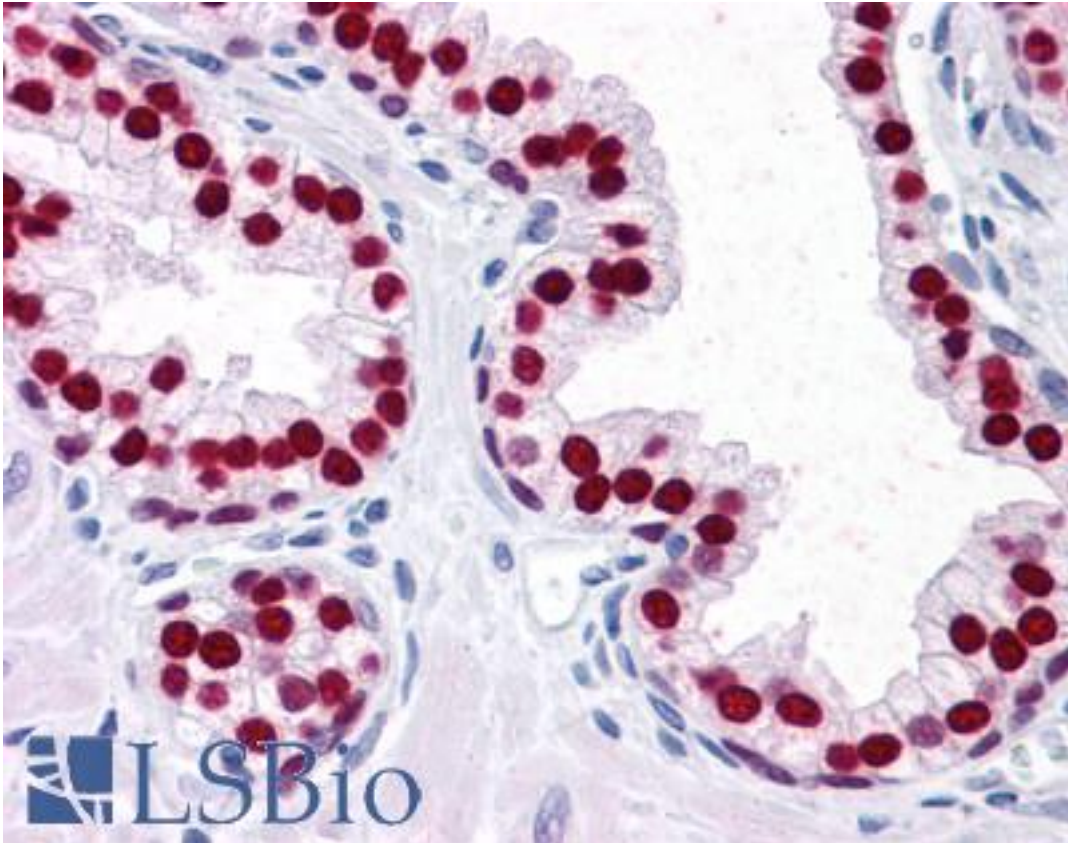


**FOXA1 Mouse anti-Human Monoclonal (4F6) Antibody - LS-B4356 - LSBio**

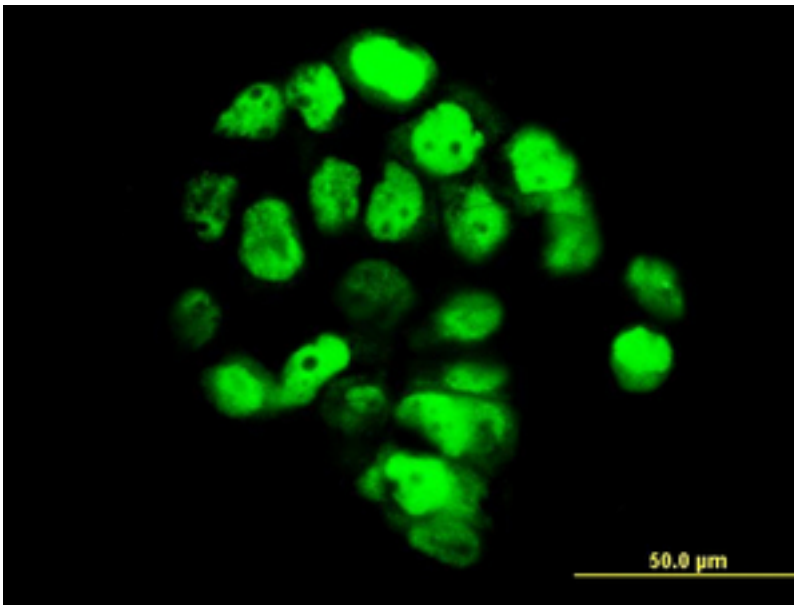
<b>CatalogID:</b>	LS-B4356
<b>Validation:</b>	This antibody replaces catalog number LS-C104972. It has been validated for use in the following assays: IHC-P.
<b>Target:</b>	forkhead box A1 (FOXA1)
<b>Synonyms:</b>	FOXA1 Antibody, Forkhead box A1 Antibody, Forkhead box protein A1 Antibody, HNF-3-alpha Antibody, HNF-3A Antibody, TCF-3A Antibody, TCF3A Antibody, HNF3A Antibody, Transcription factor 3A Antibody
<b>Family / Subfamily:</b>	Transcription factor / not assigned-Transcription factor
<b>Host</b>	FOXA1 antibody was produced in Mouse
<b>Clonality:</b>	Monoclonal
<b>Isotype:</b>	IgG2b,k
<b>Clone Name:</b>	4F6
<b>Immunogen Species:</b>	FOXA1 antibody was raised against Human
<b>Antigen Type:</b>	Recombinant protein
<b>Immunogen:</b>	FOXA1 antibody was raised against fOXA1 (NP_004487, 367 a.a. ~ 473 a.a) partial recombinant protein with GST tag. MW of the GST tag alone is 26 KDa.
<b>Reactivity:</b>	Human
<b>Purification:</b>	Protein A purified
<b>Presentation:</b>	PBS, pH 7.2
<b>Recommended Storage:</b>	Store at -20°C. Aliquot to avoid freeze/thaw cycles.
<b>Usage Summary:</b>	Western Blot (Cell lysate) - positive control A-431. Western Blot (Cell lysate) - positive control HepG2. Immunofluorescence (10 ug/ml) - positive control A-431 cells. Sandwich ELISA (Recombinant protein).
<b>Uses:</b>	IHC - Paraffin (5 µg/ml), Immunofluorescence (10 µg/ml), Western blot, ELISA (Optimal dilution to be determined by the researcher)
<b>Size:</b>	50 µg

**Immunohistochemistry Image:**



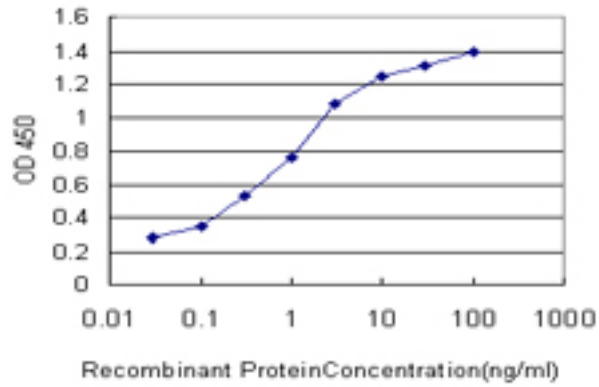
Anti-FOXA1 antibody IHC of human prostate. Immunohistochemistry of formalin-fixed, paraffin-embedded tissue after heat-induced antigen retrieval. Antibody LS-B4356 concentration 5 ug/ml.

**Immunofluorescence Image:**



Immunofluorescence of monoclonal antibody to FOXA1 on A-431 cell (antibody concentration 10 ug/ml).

**ELISA Image:**



Detection limit for recombinant GST tagged FOXA1 is approximately 0.03 ng/ml as a capture antibody.

**Requested From:**

Japan

Laboratory Reagent For In Vitro Research Use Only

Not for resale without prior written consent from LifeSpan BioSciences, Inc.

Created on 9/23/2014

© 2014 LifeSpan BioSciences