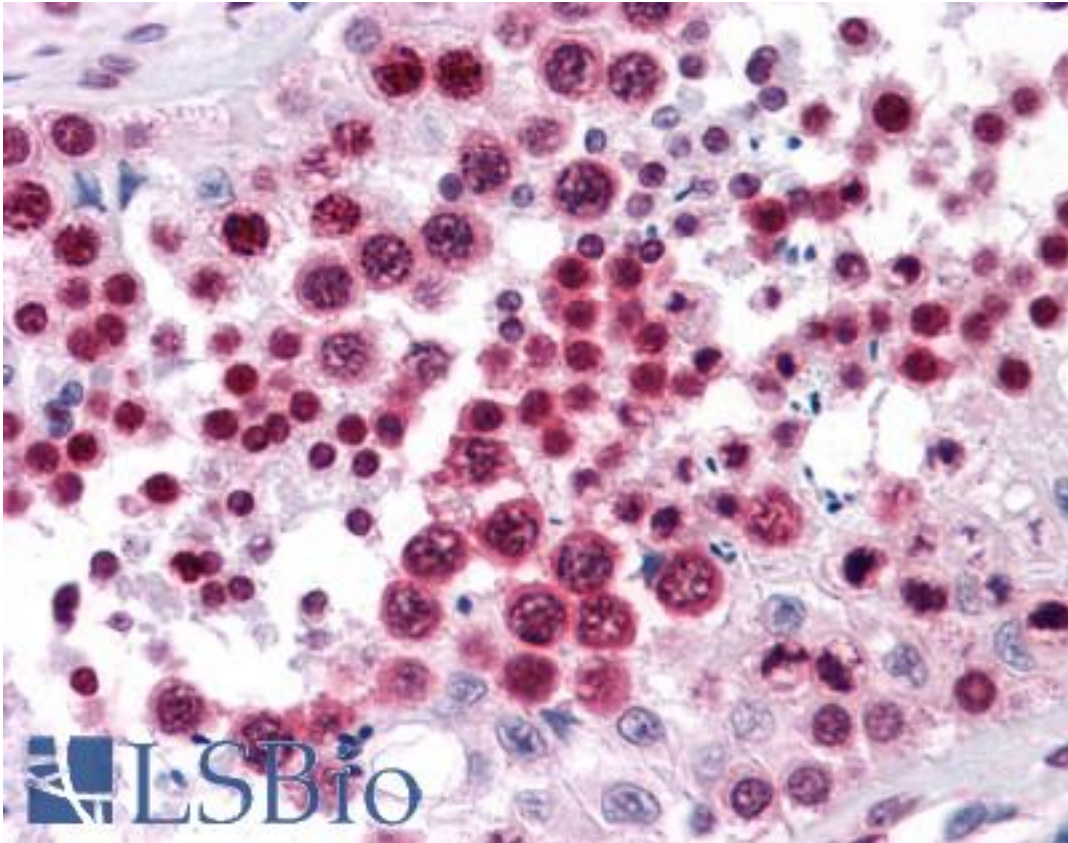


**HMG2 / HMGB2 Mouse anti-Human Monoclonal (3D2) Antibody - LS-B4355 - LSBio**

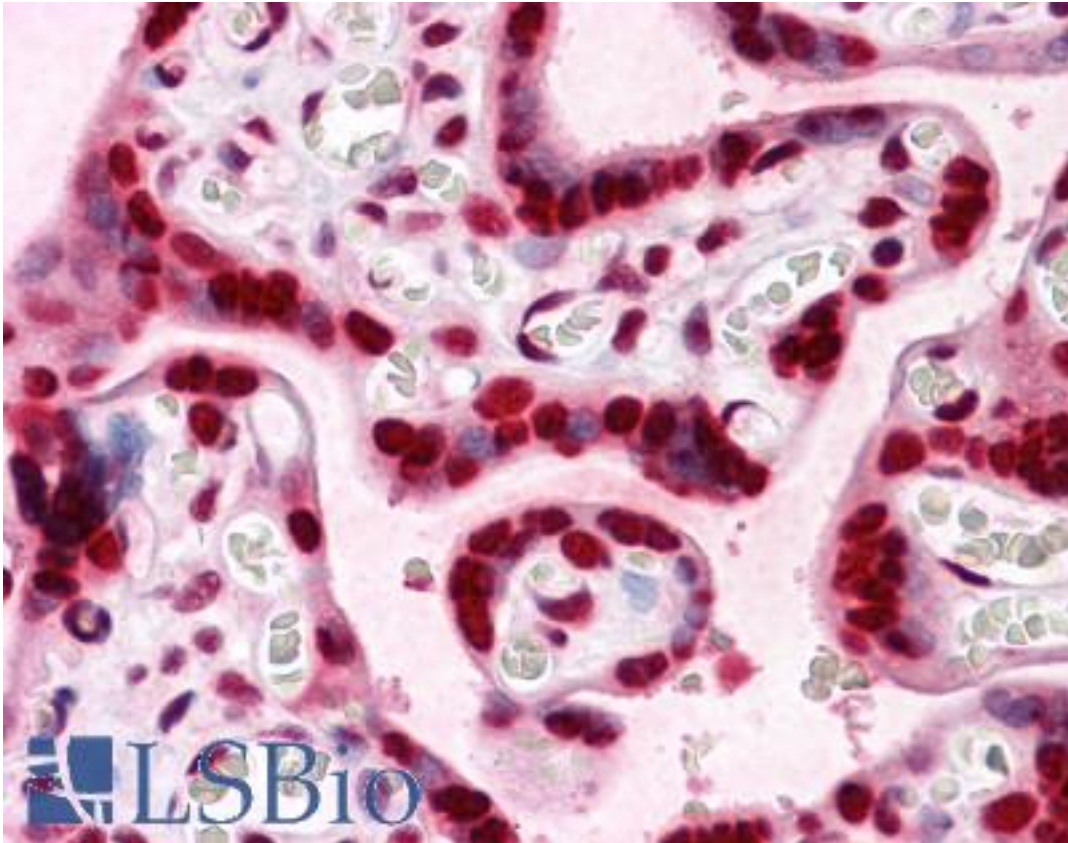
<b>CatalogID:</b>	LS-B4355
<b>Validation:</b>	This antibody replaces catalog number LS-C104970. It has been validated for use in the following assays: IHC-P.
<b>Target:</b>	high mobility group box 2 (HMGB2)
<b>Synonyms:</b>	HMGB2 Antibody, HMG-2 Antibody, High mobility group box 2 Antibody, High-mobility group box 2 Antibody, HMG2 Antibody, High mobility group protein 2 Antibody, High mobility group protein B2 Antibody
<b>Host</b>	HMGB2 antibody was produced in Mouse
<b>Clonality:</b>	Monoclonal
<b>Isotype:</b>	IgG2a,k
<b>Clone Name:</b>	3D2
<b>Immunogen Species:</b>	HMG2 / HMGB2 antibody was raised against Human
<b>Antigen Type:</b>	Recombinant protein
<b>Immunogen:</b>	HMG2 / HMGB2 antibody was raised against hMGB2 (AAH00903, 1 a.a. ~ 196 a.a) full length recombinant protein with GST tag. MW of the GST tag alone is 26 KDa.
<b>Reactivity:</b>	Human
<b>Purification:</b>	Protein A purified
<b>Presentation:</b>	PBS, pH 7.4.
<b>Recommended Storage:</b>	Store at -20°C. Aliquot to avoid freeze/thaw cycles.
<b>Usage Summary:</b>	Western Blot (Cell lysate) - positive control Hela NE. Immunofluorescence (10 ug/ml) - positive control HeLa cells. Sandwich ELISA (Recombinant protein).
<b>Uses:</b>	IHC - Paraffin (5 µg/ml), Immunofluorescence (10 µg/ml), Western blot, ELISA (Optimal dilution to be determined by the researcher)
<b>Size:</b>	50 µg
<b>Concentration:</b>	0.5 mg/ml

**Immunohistochemistry Image:**



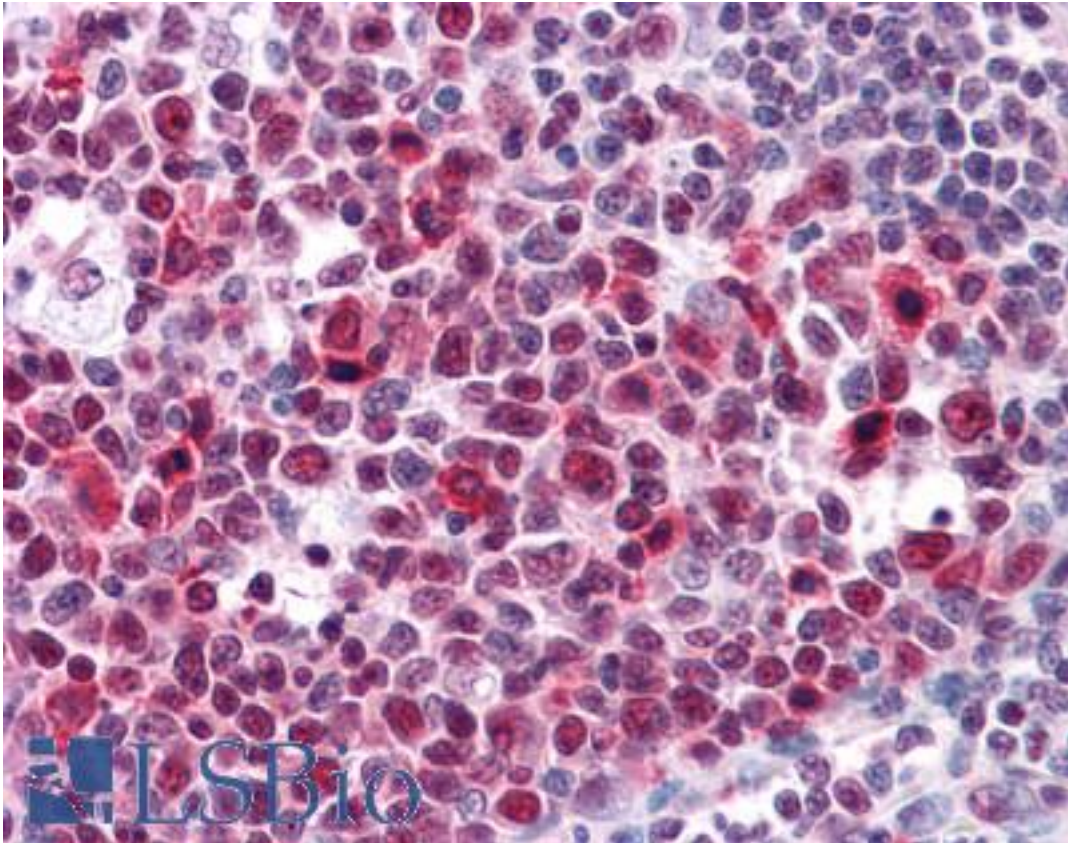
Anti-HMGB2 antibody IHC of human testis. Immunohistochemistry of formalin-fixed, paraffin-embedded tissue after heat-induced antigen retrieval. Antibody LS-B4355 concentration 5 ug/ml.

**Immunohistochemistry Image:**



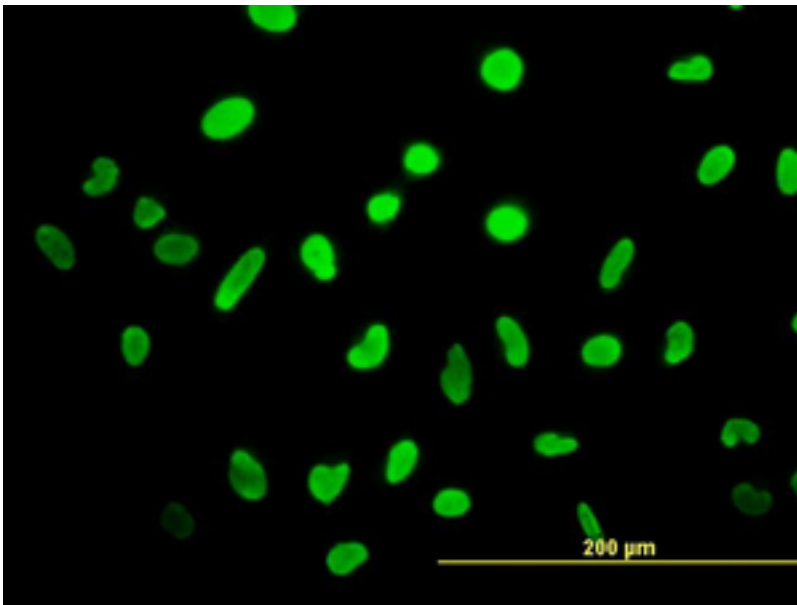
Anti-HMGB2 antibody IHC of human placenta. Immunohistochemistry of formalin-fixed, paraffin-embedded tissue after heat-induced antigen retrieval. Antibody LS-B4355 concentration 5 ug/ml.

**Immunohistochemistry Image:**



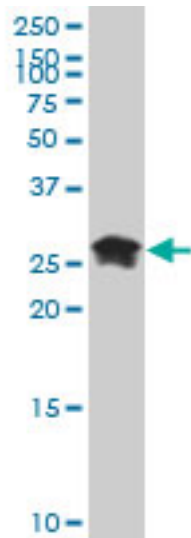
Anti-HMGB2 antibody IHC of human tonsil. Immunohistochemistry of formalin-fixed, paraffin-embedded tissue after heat-induced antigen retrieval. Antibody LS-B4355 concentration 5 ug/ml.

**Immunofluorescence Image:**



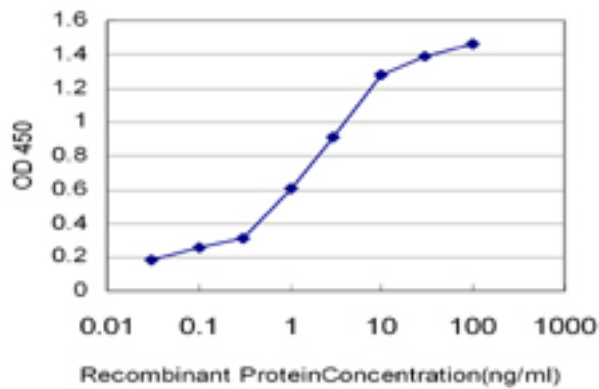
Immunofluorescence of monoclonal antibody to HMGB2 on HeLa cell (antibody concentration 10 ug/ml).

**Western Blot Image:**



HMGB2 monoclonal antibody (M04), clone 3D2 Western blot of HMGB2 expression in HeLa NE.

**ELISA Image:**



Detection limit for recombinant GST tagged HMGB2 is approximately 0.03 ng/ml as a capture antibody.

**Requested From:**

Japan

Laboratory Reagent For In Vitro Research Use Only

Not for resale without prior written consent from LifeSpan BioSciences, Inc.

Created on 9/23/2014

© 2014 LifeSpan BioSciences