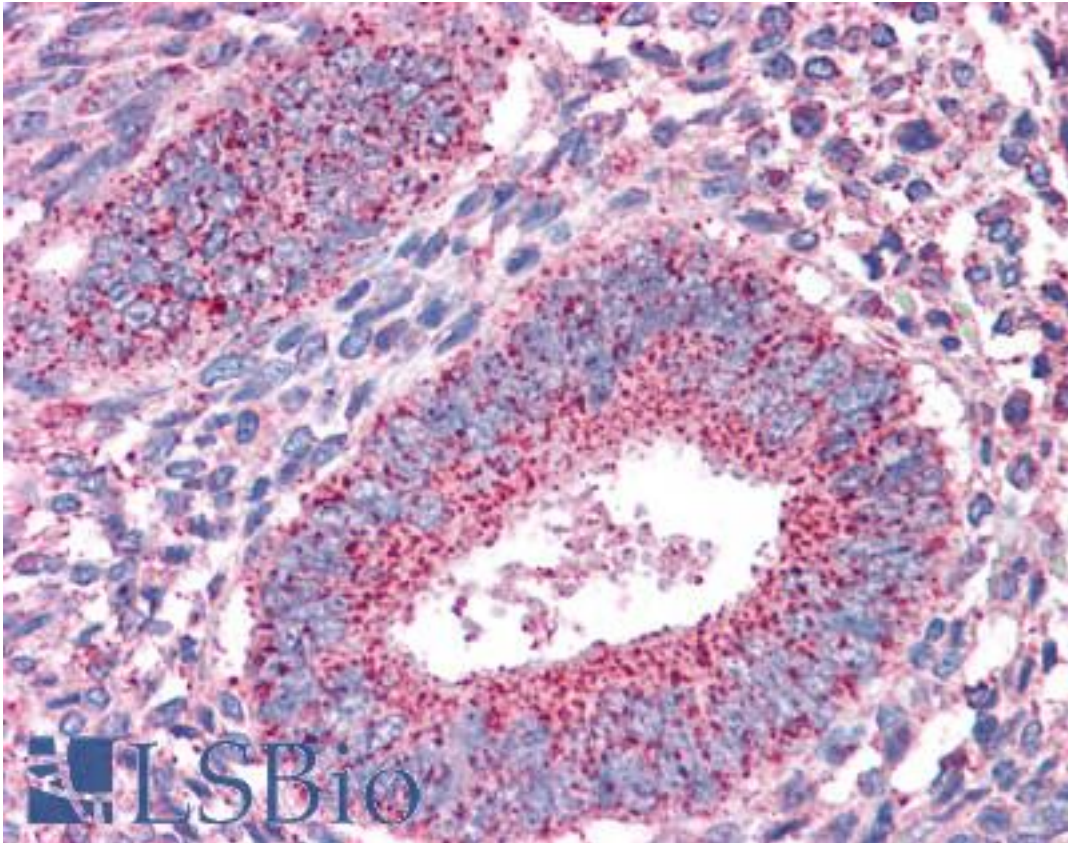


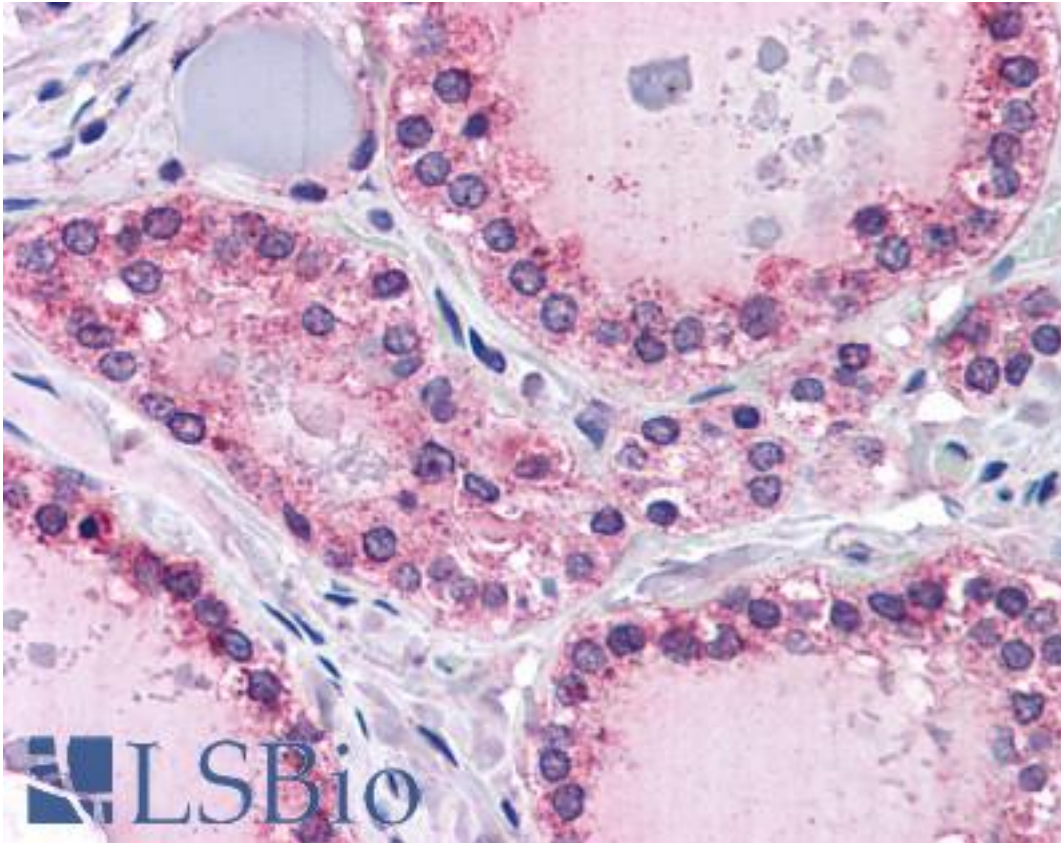
PTPRM / PTP Mu Goat anti-Human Polyclonal (Internal) Antibody - LS-B4352 - LSBio	
CatalogID:	LS-B4352
Validation:	This antibody replaces catalog number LS-C55345. It has been validated for use in the following assays: IHC-P.
Target:	protein tyrosine phosphatase, receptor type, M (PTPRM)
Synonyms:	PTPRM Antibody, HR-PTPu Antibody, PTP mu Antibody, PTPRL1 Antibody, RPTPM Antibody, Ptpmu Antibody, R-PTP-MU Antibody, RPTPU Antibody
Family / Subfamily:	Protein Phosphatase / R2A
Host	PTPRM antibody was produced in Goat
Clonality:	Polyclonal
Immunogen Species:	PTPRM / PTP Mu antibody was raised against Human
Antigen Type:	Synthetic peptide
Immunogen:	PTPRM / PTP Mu antibody was raised against synthetic peptide C-KLIRQVDKWQEEYN from an internal region of human PTPRM (NP_001098714.1; NP_002836.3). Percent identity by BLAST analysis: Human, Gorilla, Orangutan, Gibbon, Marmoset, Mouse, Rat, Elephant, Panda, Bovine, Dog, Bat, Rabbit, Xenopus (100%); Hamster, Opossum, Chicken, Stickleback, Pufferfish (93%); Zebrafish (86%).
Specificity:	Human PTPRM. This antibody is expected to recognise both reported isoforms (NP_001098714.1 and NP_002836.3).
Epitope:	Internal
Reactivity:	Human, Gorilla, Orangutan, Gibbon, Monkey, Mouse, Rat, Bat, Bovine, Dog, Rabbit, Xenopus
Predicted Reactivity:	Hamster, Chicken
Purification:	Immunoaffinity purified
Presentation:	Tris-buffered saline, pH 7.3, 0.5% BSA, 0.02% sodium azide
Recommended Storage:	Store at -20°C. Minimize freezing and thawing.
Uses:	IHC - Paraffin (3.75 µg/ml), ELISA (1:16000) (Optimal dilution to be determined by the researcher)
Size:	50 µg
Concentration:	0.5 mg/ml

Immunohistochemistry Image:



Anti-PTPRM antibody IHC of human uterus. Immunohistochemistry of formalin-fixed, paraffin-embedded tissue after heat-induced antigen retrieval. Antibody LS-B4352 concentration 3.75 ug/ml.

Immunohistochemistry Image:



Anti-PTPRM antibody IHC of human thyroid. Immunohistochemistry of formalin-fixed, paraffin-embedded tissue after heat-induced antigen retrieval. Antibody LS-B4352 concentration 3.75 ug/ml.

Requested From:

Japan

Laboratory Reagent For In Vitro Research Use Only

Not for resale without prior written consent from LifeSpan BioSciences, Inc.

Created on 9/23/2014

© 2014 LifeSpan BioSciences