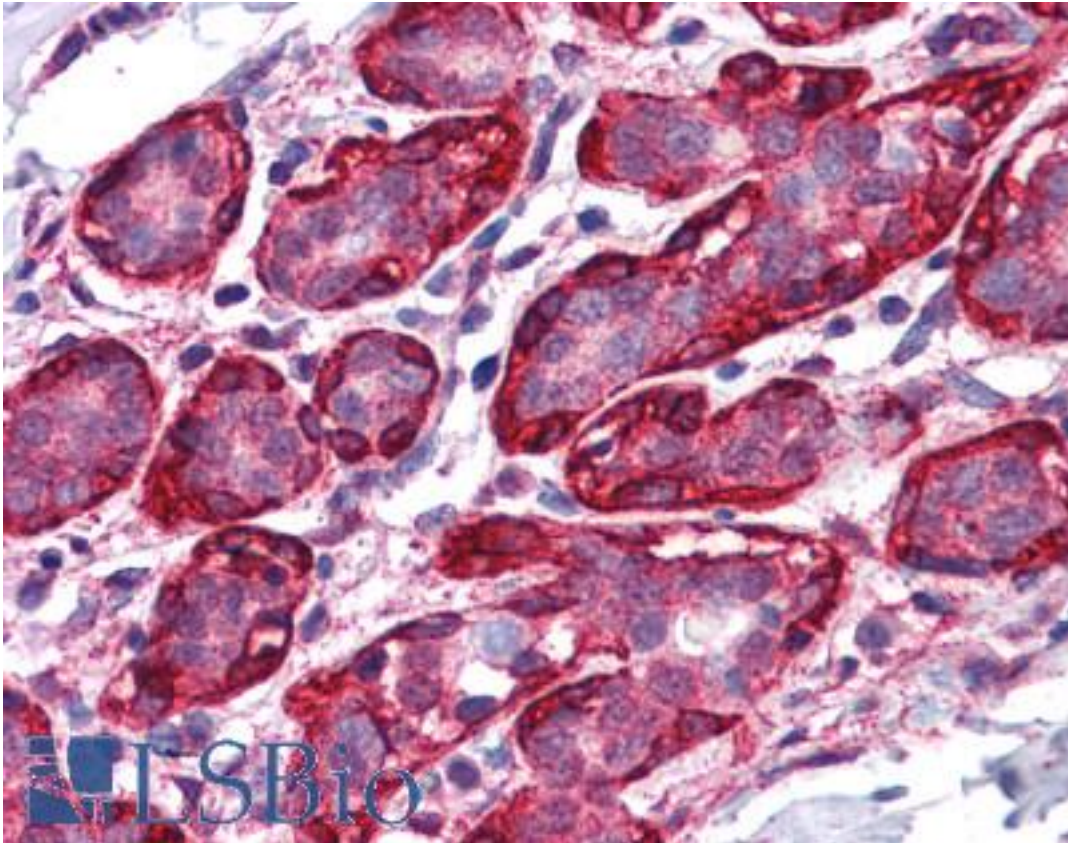


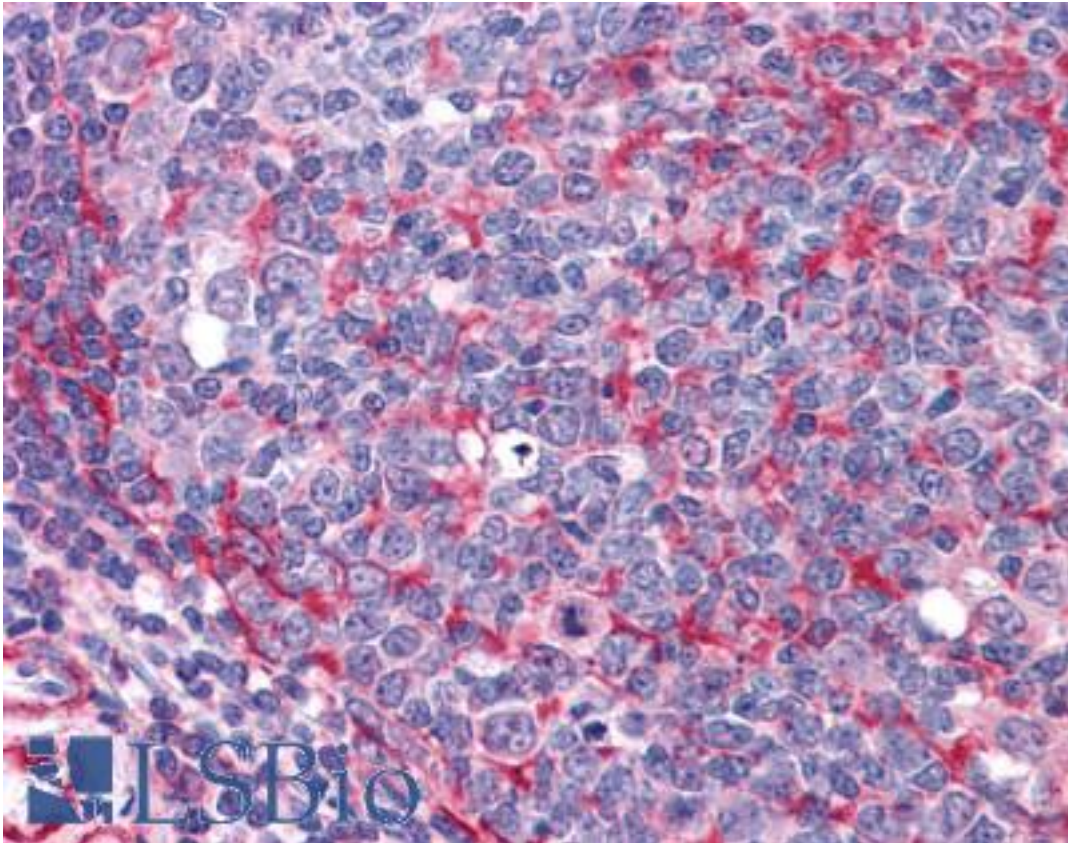
THRA Goat anti-Human Polyclonal (Internal) Antibody - LS-B4351 - LSBio	
CatalogID:	LS-B4351
Validation:	This antibody replaces catalog number LS-C55585. It has been validated for use in the following assays: IHC-P.
Target:	thyroid hormone receptor, alpha (THRA)
Synonyms:	THRA Antibody, AR7 Antibody, C-ERBA-1 Antibody, C-erbaalpha Antibody, EAR-7.1/EAR-7.2 Antibody, ERB-T-1 Antibody, ERBA1 Antibody, EAR-7 Antibody, ERBA-related 7 Antibody, HTR alpha 1 Antibody, HTR alpha 2 Antibody, THRA1 Antibody, Thyroid hormone receptor alpha Antibody, T3R Antibody, Tralpha2 Antibody, Triiodothyronine receptor Antibody, V-erbA-related protein 7 Antibody, Thyroid hormone receptor Antibody, Tralpha1 Antibody, NR1A1 Antibody, THRA3 Antibody, C-erbA-alpha Antibody, CHNG6 Antibody, EAR7 Antibody, ERBA Antibody, Erba-alpha Antibody, THRA2 Antibody, TR alpha Antibody, Trapha Antibody
Family / Subfamily:	NHR / NR1 Thyroid hormone-like
Host	THRA antibody was produced in Goat
Clonality:	Polyclonal
Immunogen Species:	THRA antibody was raised against Human
Antigen Type:	Synthetic peptide
Immunogen:	THRA antibody was raised against synthetic peptide C-KEEMIRSLQQRP from an internal region of human THRA (NP_955366.1; NP_003241.2). Percent identity by BLAST analysis: Human, Gorilla, Gibbon, Monkey, Mouse, Rat, Sheep, Hamster, Elephant, Panda, Dog, Bovine, Rabbit, Horse, Pig, Opossum (100%); Chicken, Xenopus, Frog (83%).
Specificity:	Human THRA. This antibody is expected to recognize both reported isoforms (NP_955366.1; NP_003241.2). This antibody is not expected to cross-react to THRB.
Epitope:	Internal
Reactivity:	Human, Gorilla, Gibbon, Monkey, Mouse, Rat, Bovine, Dog, Hamster, Horse, Pig, Rabbit, Sheep
Purification:	Immunoaffinity purified
Presentation:	Tris-buffered saline, pH 7.3, 0.5% BSA, 0.02% sodium azide
Recommended Storage:	Store at -20°C. Minimize freezing and thawing.
Uses:	IHC - Paraffin (3.75 µg/ml), Western blot (0.5 - 1.5 µg/ml), ELISA (1:32000) (Optimal dilution to be determined by the researcher)
Size:	50 µg
Concentration:	0.5 mg/ml

Immunohistochemistry Image:



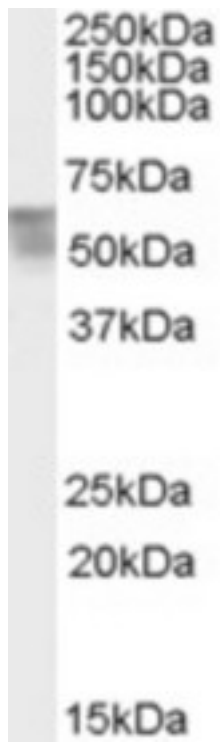
Anti-THRA antibody IHC of human breast. Immunohistochemistry of formalin-fixed, paraffin-embedded tissue after heat-induced antigen retrieval. Antibody LS-B4351 concentration 3.75 ug/ml.

Immunohistochemistry Image:



Anti-THRA antibody IHC of human tonsil. Immunohistochemistry of formalin-fixed, paraffin-embedded tissue after heat-induced antigen retrieval. Antibody LS-B4351 concentration 3.75 ug/ml.

Western Blot Image:



Antibody (0.5 ug/ml) staining of Human Bone Marrow lysate (35 ug protein in RIPA buffer).
Primary incubation was 1 hour. Detected by chemiluminescence.

Requested From:

Japan

Laboratory Reagent For In Vitro Research Use Only

Not for resale without prior written consent from LifeSpan BioSciences, Inc.

Created on 9/23/2014

© 2014 LifeSpan BioSciences