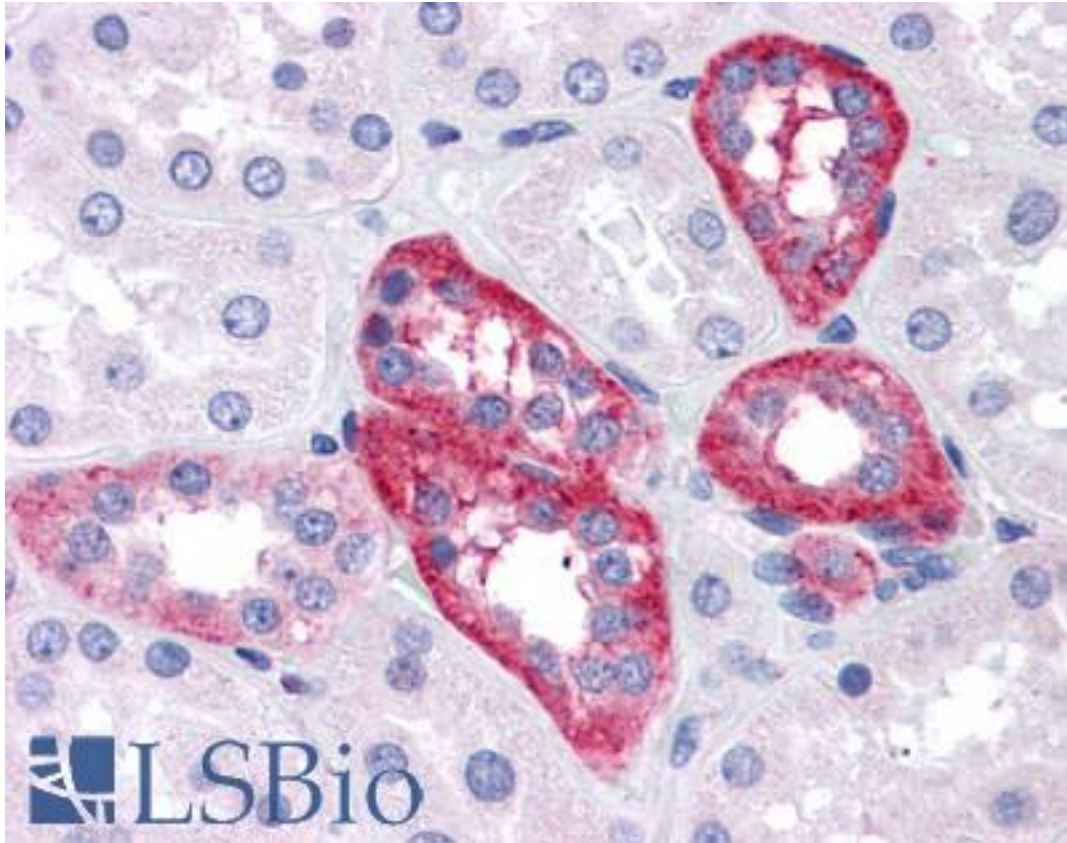


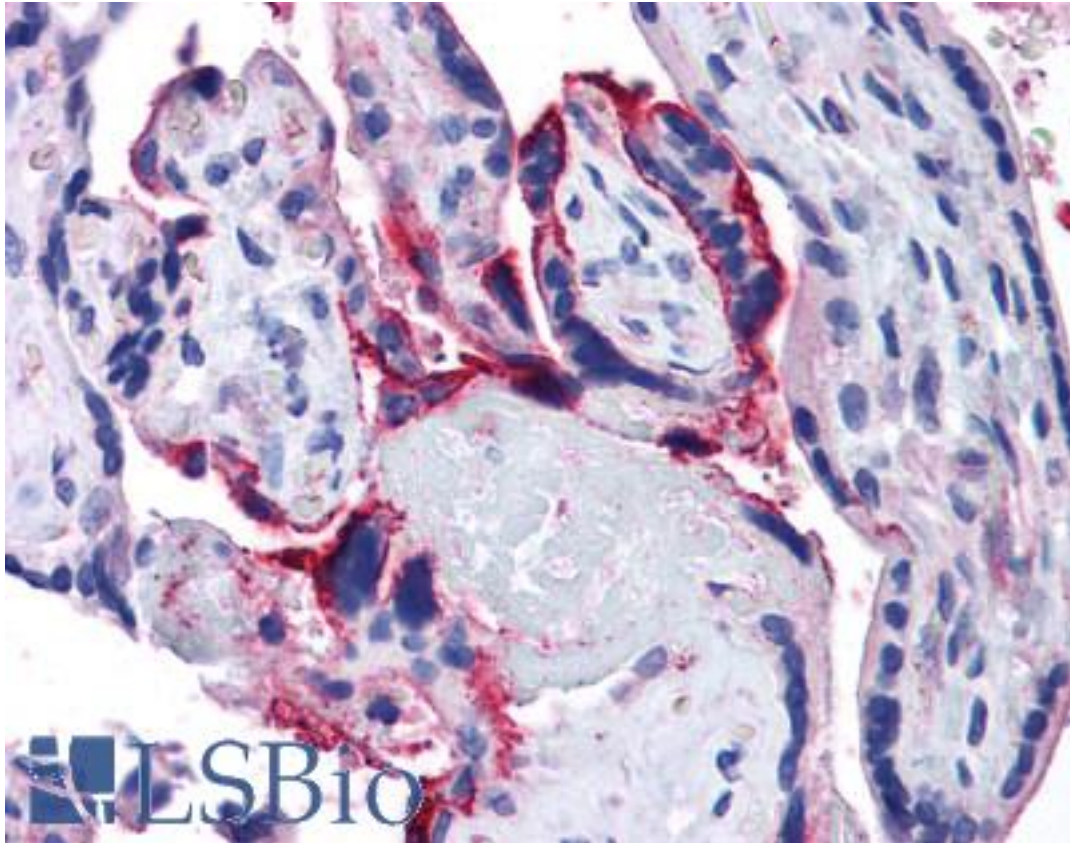
APH1A / APH-1 Goat anti-Human Polyclonal (Internal) Antibody - LS-B4350 - LSBio	
CatalogID:	LS-B4350
Validation:	This antibody replaces catalog number LS-C54516. It has been validated for use in the following assays: IHC-P.
Target:	APH1A gamma secretase subunit
Synonyms:	APH1A Antibody, Aph-1alpha Antibody, APH-1 Antibody, CGI-78 Antibody, PSF Antibody, APH-1A Antibody, Gamma-secretase subunit APH-1A Antibody
Family / Subfamily:	Protease Regulation
Host	APH1A antibody was produced in Goat
Clonality:	Polyclonal
Immunogen Species:	APH1A / APH-1 antibody was raised against Human
Antigen Type:	Synthetic peptide
Immunogen:	APH1A / APH-1 antibody was raised against synthetic peptide C-HVTDRSDARLQYG from an internal region of human APH1A (NP_001071096.1; NP_057106.2). Percent identity by BLAST analysis: Human, Gorilla, Gibbon, Monkey, Marmoset, Mouse, Rat, Hamster, Panda, Dog, Bovine, Horse, Rabbit, Pig (100%); Elephant, Bat (92%); Opossum (85%).
Specificity:	Human APH1A. This antibody is expected to recognize isoform 1 (NP_001071096.1) and isoform 2 (NP_057106.2).
Epitope:	Internal
Reactivity:	Human, Gorilla, Gibbon, Monkey, Mouse, Rat, Bovine, Dog, Hamster, Horse, Pig, Rabbit
Predicted Reactivity:	Bat
Purification:	Immunoaffinity purified
Presentation:	Tris-buffered saline, pH 7.3, 0.5% BSA, 0.02% sodium azide
Recommended Storage:	Store at -20°C. Minimize freezing and thawing.
Uses:	IHC - Paraffin (5 µg/ml), Western blot (0.05 - 0.1 µg/ml), ELISA (1:128000) (Optimal dilution to be determined by the researcher)
Size:	50 µg
Concentration:	0.5 mg/ml

Immunohistochemistry Image:



Anti-APH1A antibody IHC of human kidney. Immunohistochemistry of formalin-fixed, paraffin-embedded tissue after heat-induced antigen retrieval. Antibody LS-B4350 concentration 5 ug/ml.

Immunohistochemistry Image:



Anti-APH1A antibody IHC of human placenta. Immunohistochemistry of formalin-fixed, paraffin-embedded tissue after heat-induced antigen retrieval. Antibody LS-B4350 concentration 5 ug/ml.

Western Blot Image:



Antibody (0.05 ug/ml) staining of Human Brain (Cerebral Cortex) lysate (35 ug protein in RIPA buffer). Primary incubation was 1 hour. Detected by chemiluminescence.

Requested From:

Japan

Laboratory Reagent For In Vitro Research Use Only

Not for resale without prior written consent from LifeSpan BioSciences, Inc.

Created on 9/23/2014

© 2014 LifeSpan BioSciences