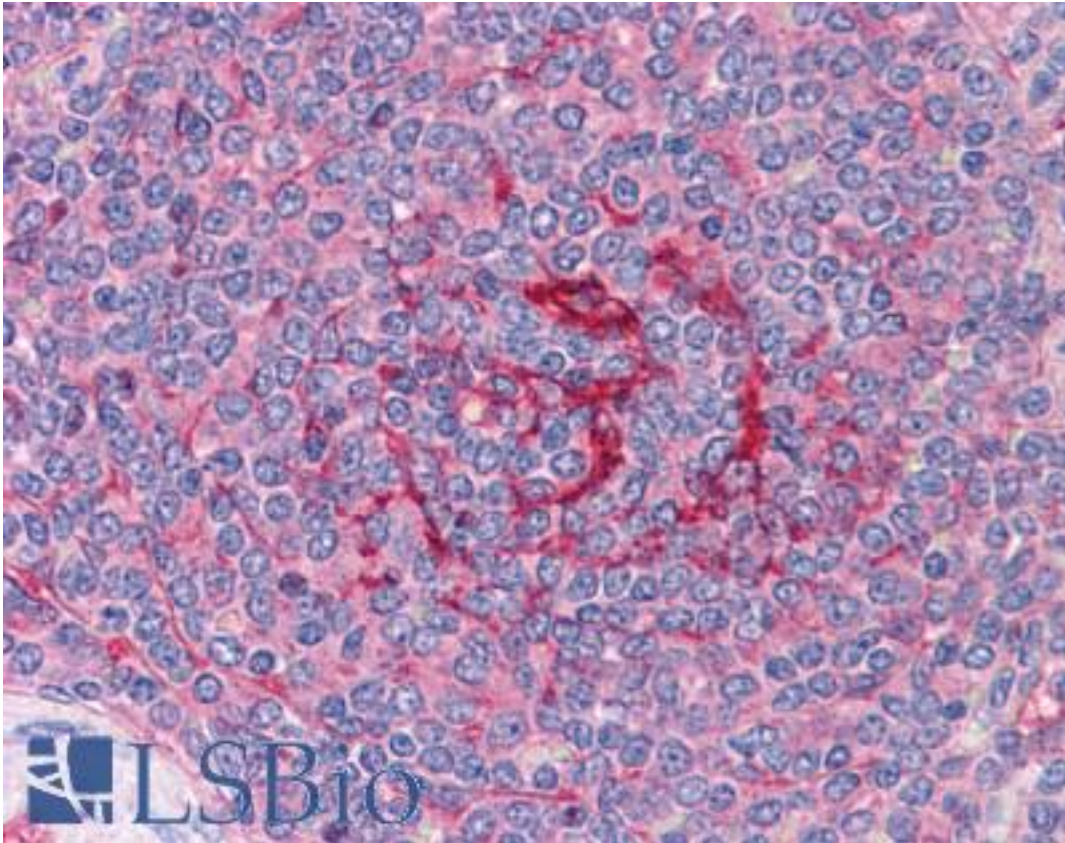


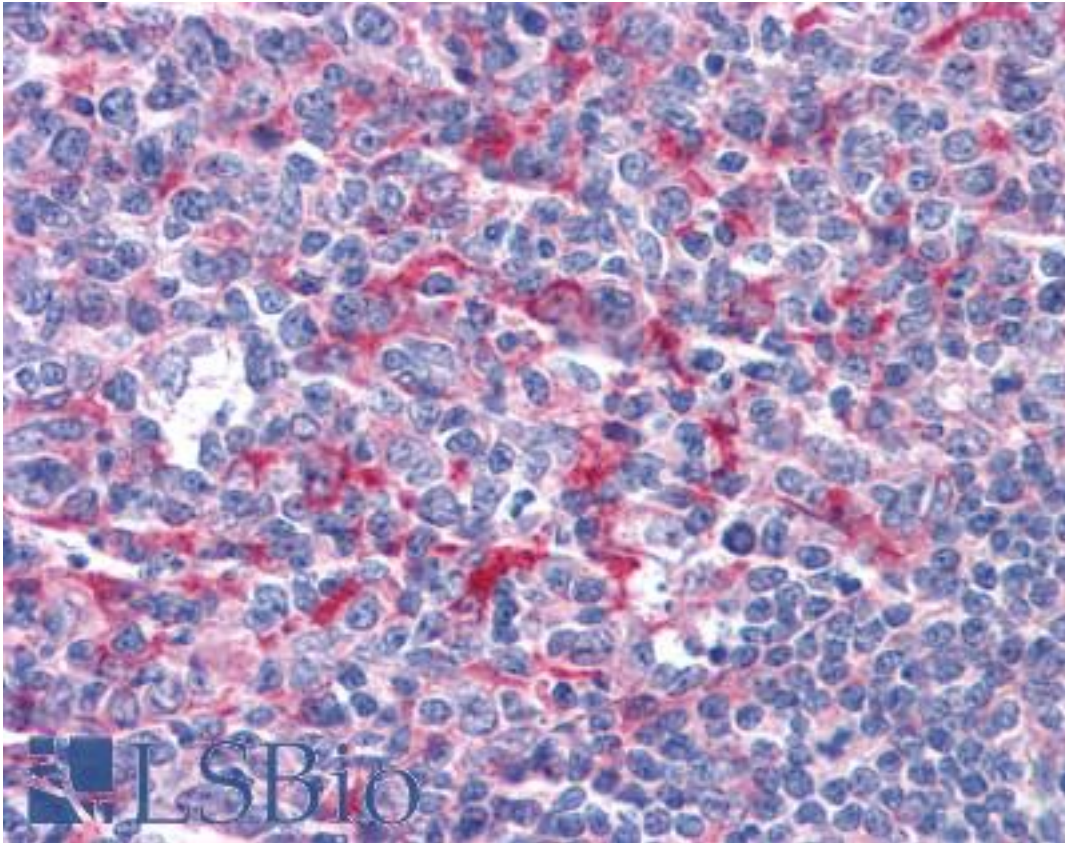
GABPB1 Goat anti-Human Polyclonal (Internal) Antibody - LS-B4349 - LSBio	
CatalogID:	LS-B4349
Validation:	This antibody replaces catalog number LS-C54891. It has been validated for use in the following assays: IHC-P.
Target:	GA binding protein transcription factor, beta subunit 1 (GABPB1)
Synonyms:	GABPB1 Antibody, BABPB2 Antibody, E4TF1 Antibody, E4TF1-47 Antibody, E4TF1-53 Antibody, GABP subunit beta-1 Antibody, GABPB Antibody, GABPB-1 Antibody, E4TF1B Antibody, NRF2B2 Antibody, Transcription factor E4TF1-47 Antibody, Transcription factor E4TF1-53 Antibody, GABP subunit beta-2 Antibody, GABPB-2 Antibody, NRF2B1 Antibody, Nuclear respiratory factor 2 Antibody
Host	GABPB1 antibody was produced in Goat
Clonality:	Polyclonal
Immunogen Species:	GABPB1 antibody was raised against Human
Antigen Type:	Synthetic peptide
Immunogen:	GABPB1 antibody was raised against synthetic peptide C-SSSENSKATDETG from an internal region of human GABPB2 (NP_005245.2; NP_002032.2). Percent identity by BLAST analysis: Human, Gorilla, Gibbon, Monkey, Marmoset, Panda, Dog, Rabbit, Pig, Opossum (100%); Platypus (85%).
Specificity:	Human GABPB2. This antibody is expected to recognise isoform beta 1 (NP_005245.2) and isoform gamma 1 (NP_002032.2).
Epitope:	Internal
Reactivity:	Human, Gorilla, Gibbon, Monkey, Dog, Pig, Rabbit
Purification:	Immunoaffinity purified
Presentation:	Tris-buffered saline, pH 7.3, 0.5% BSA, 0.02% sodium azide
Recommended Storage:	Store at -20°C. Minimize freezing and thawing.
Uses:	IHC - Paraffin (3.75 µg/ml), Western blot (0.5 - 1.5 µg/ml), ELISA (1:32000) (Optimal dilution to be determined by the researcher)
Size:	50 µg
Concentration:	0.5 mg/ml

Immunohistochemistry Image:



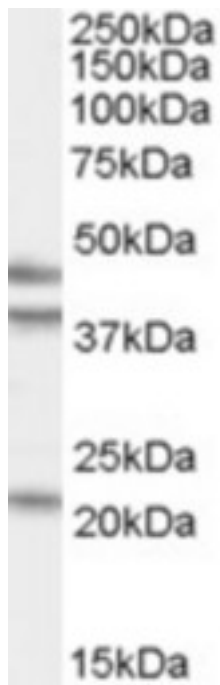
Anti-GABPB1 antibody IHC of human spleen. Immunohistochemistry of formalin-fixed, paraffin-embedded tissue after heat-induced antigen retrieval. Antibody LS-B4349 concentration 3.75 ug/ml.

Immunohistochemistry Image:



Anti-GABPB1 antibody IHC of human tonsil. Immunohistochemistry of formalin-fixed, paraffin-embedded tissue after heat-induced antigen retrieval. Antibody LS-B4349 concentration 3.75 ug/ml.

Western Blot Image:



Antibody (0.5 ug/ml) staining of HeLa cell lysate (35 ug protein in RIPA buffer). Primary incubation was 1 hour. Detected by chemiluminescence.

Requested From:

Japan

Laboratory Reagent For In Vitro Research Use Only

Not for resale without prior written consent from LifeSpan BioSciences, Inc.

Created on 9/23/2014

© 2014 LifeSpan BioSciences