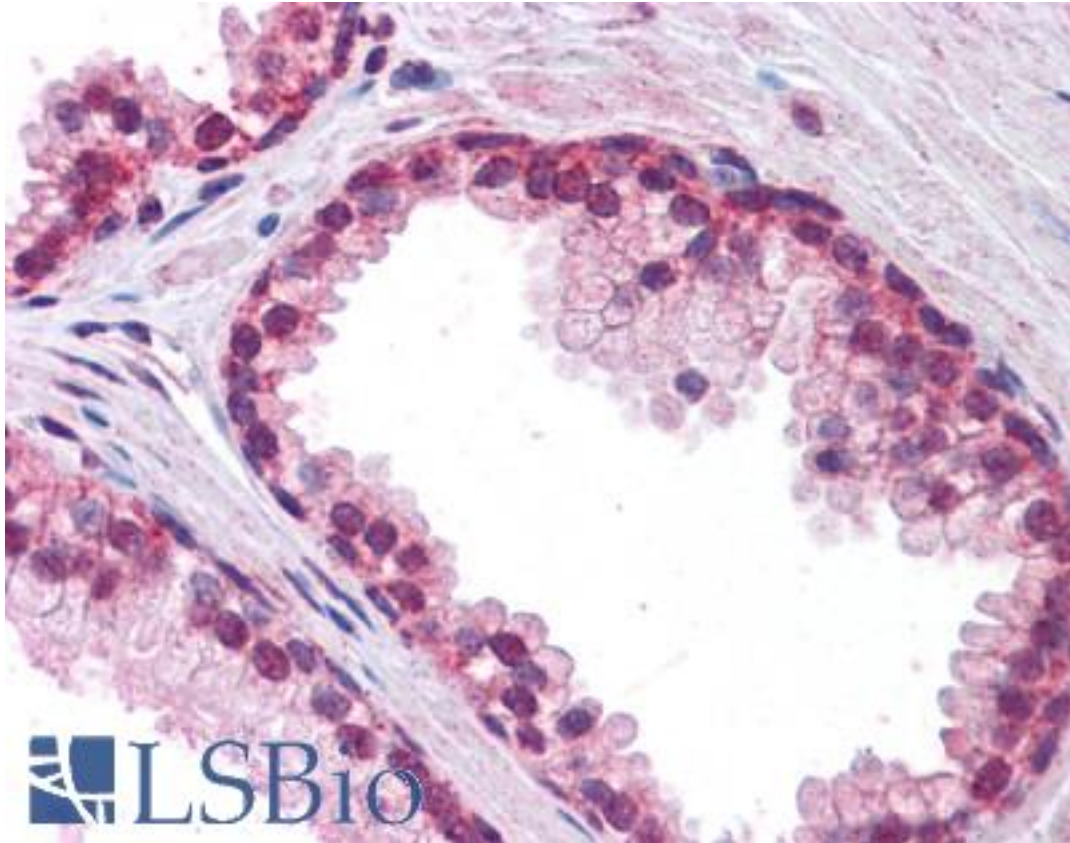


FOXP2 Goat anti-Human Polyclonal (Internal) Antibody - LS-B4346 - LSBio

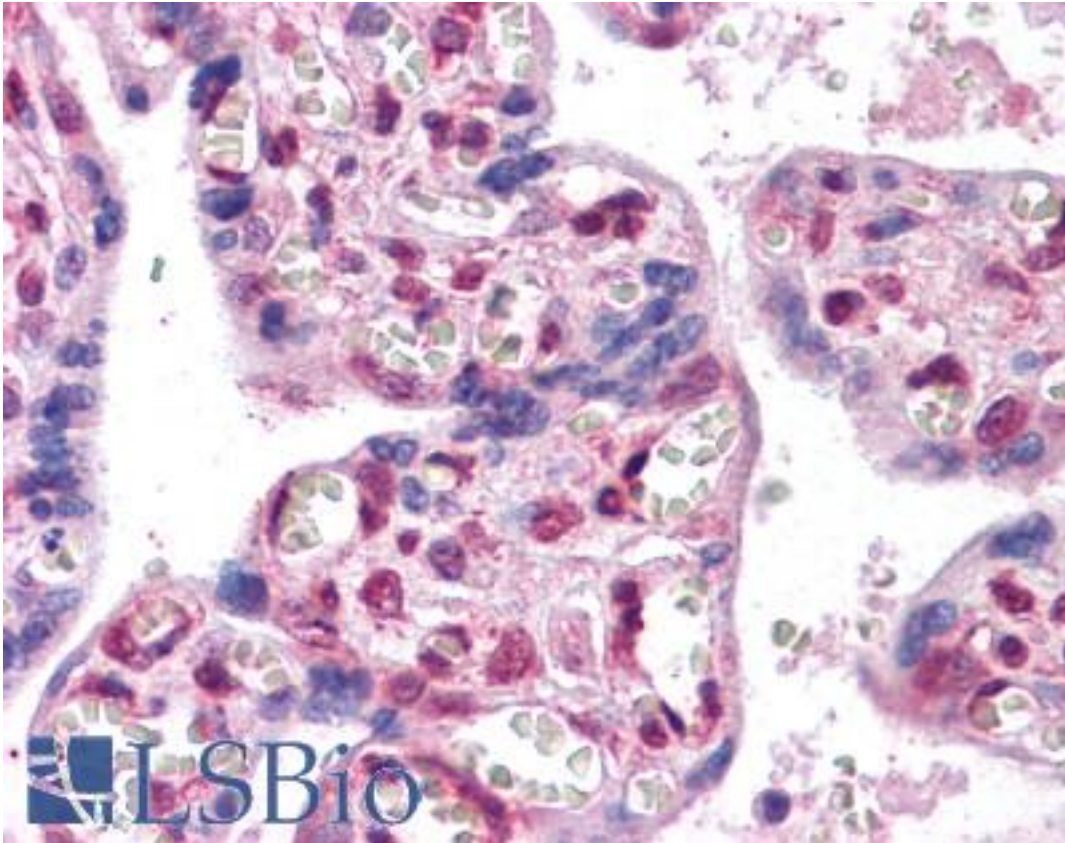
<b>CatalogID:</b>	LS-B4346
<b>Validation:</b>	This antibody replaces catalog number LS-C54872. It has been validated for use in the following assays: IHC-P.
<b>Target:</b>	forkhead box P2 (FOXP2)
<b>Synonyms:</b>	FOXP2 Antibody, CAG repeat protein 44 Antibody, Forkhead box protein P2 Antibody, Forkhead box P2 Antibody, SPCH1 Antibody, CAGH44 Antibody, TNRC10 Antibody
<b>Family / Subfamily:</b>	Transcription factor / not assigned-Transcription factor
<b>Host</b>	FOXP2 antibody was produced in Goat
<b>Clonality:</b>	Polyclonal
<b>Immunogen Species:</b>	FOXP2 antibody was raised against Human
<b>Antigen Type:</b>	Synthetic peptide
<b>Immunogen:</b>	FOXP2 antibody was raised against synthetic peptide C-DEVEYQKRRSQKIT from an internal region of human FOXP2 (NP_055306.1; NP_683696.2; NP_683697.2; NP_683698.2; NP_001166237.1). Percent identity by BLAST analysis: Human, Chimpanzee, Gorilla, Orangutan, Gibbon, Baboon, Monkey, Galago, Marmoset, Mouse, Rat, Shrew, Hamster, Elephant, Panda, Bovine, Dog, Bat, Rabbit, Horse, Pig, Opossum, Turkey, Zebra finch, Chicken, Armadillo, Lizard, Pufferfish (100%); Xenopus, Stickleback, Zebrafish (93%).
<b>Specificity:</b>	Human FOXP2. This antibody is expected to recognize isoform I (NP_055306.1), isoform II (NP_683696.2), isoform IV (NP_683698.2) and isoform V (NP_001166237.1).
<b>Epitope:</b>	Internal
<b>Reactivity:</b>	Human, Chimpanzee, Gorilla, Orangutan, Gibbon, Monkey, Mouse, Rat, Bat, Bovine, Dog, Hamster, Horse, Pig, Rabbit, Chicken
<b>Predicted Reactivity:</b>	Xenopus, Zebrafish
<b>Purification:</b>	Immunoaffinity purified
<b>Presentation:</b>	Tris-buffered saline, pH 7.3, 0.5% BSA, 0.02% sodium azide
<b>Recommended Storage:</b>	Store at -20°C. Minimize freezing and thawing.
<b>Uses:</b>	IHC - Paraffin (2.5 µg/ml), Western blot (0.3 - 1 µg/ml), ELISA (1:64000) (Optimal dilution to be determined by the researcher)
<b>Size:</b>	50 µg
<b>Concentration:</b>	0.5 mg/ml

**Immunohistochemistry Image:**



Anti-FOXP2 antibody IHC of human prostate. Immunohistochemistry of formalin-fixed, paraffin-embedded tissue after heat-induced antigen retrieval. Antibody LS-B4346 concentration 2.5 ug/ml.

**Immunohistochemistry Image:**



Anti-FOXP2 antibody IHC of human placenta. Immunohistochemistry of formalin-fixed, paraffin-embedded tissue after heat-induced antigen retrieval. Antibody LS-B4346 concentration 2.5 ug/ml.

**Western Blot Image:**



Antibody (0.3 ug/ml) staining of Human Brain (Cerebellum) lysate (35 ug protein in RIPA buffer). Primary incubation was 1 hour. Detected by chemiluminescence.

**Requested From:**

Japan

Laboratory Reagent For In Vitro Research Use Only

Not for resale without prior written consent from LifeSpan BioSciences, Inc.

Created on 9/23/2014

© 2014 LifeSpan BioSciences