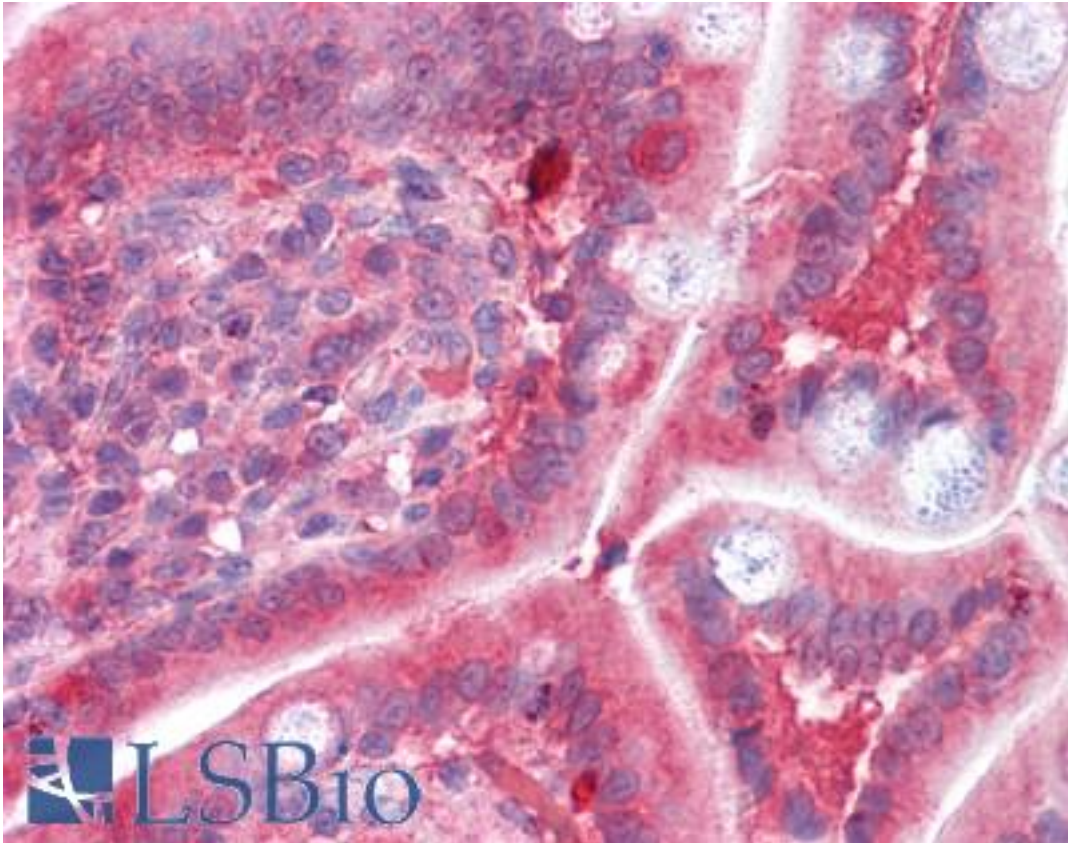


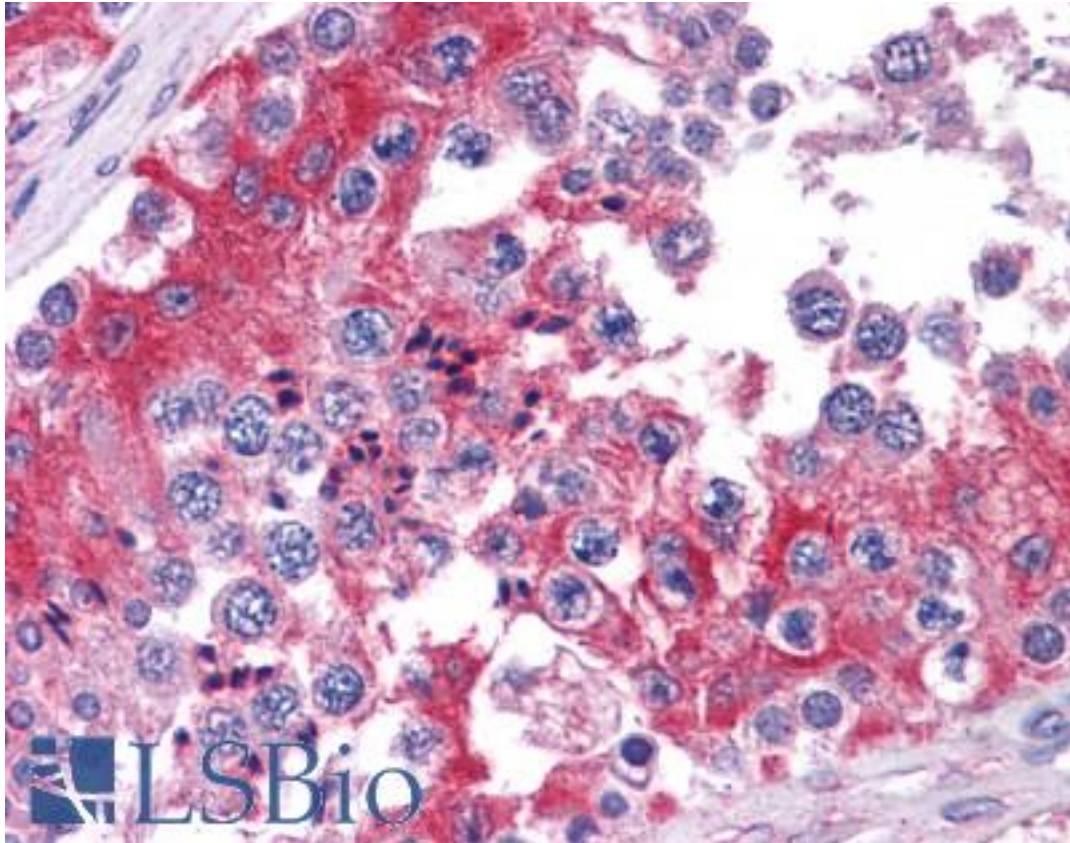
COMT Goat anti-Human Polyclonal (Internal) Antibody - LS-B4343 - LSBio	
<b>CatalogID:</b>	LS-B4343
<b>Validation:</b>	This antibody replaces catalog number LS-C54668. It has been validated for use in the following assays: IHC-P.
<b>Target:</b>	catechol-O-methyltransferase (COMT)
<b>Synonyms:</b>	COMT Antibody, Catechol O-methyltransferase Antibody, Catechol-O-methyltransferase Antibody
<b>Host</b>	COMT antibody was produced in Goat
<b>Clonality:</b>	Polyclonal
<b>Immunogen Species:</b>	COMT antibody was raised against Human
<b>Antigen Type:</b>	Synthetic peptide
<b>Immunogen:</b>	COMT antibody was raised against synthetic peptide C-QDIIPQLKKKYDVD from an internal region of human COMT (NP_000745.1; NP_009294.1). Percent identity by BLAST analysis: Human, Gorilla, Gibbon, Monkey, Marmoset, Bovine, Horse, Pig (100%); Mouse, Rat, Bat, Panda (93%); Hamster, Elephant, Rabbit, Xenopus (86%).
<b>Specificity:</b>	Human COMT. This antibody is expected to recognise both reported isoforms (NP_000745.1 and NP_009294.1)
<b>Epitope:</b>	Internal
<b>Reactivity:</b>	Human, Gorilla, Gibbon, Monkey, Bovine, Horse, Pig
<b>Predicted Reactivity:</b>	Mouse, Rat, Bat
<b>Purification:</b>	Immunoaffinity purified
<b>Presentation:</b>	Tris-buffered saline, pH 7.3, 0.5% BSA, 0.02% sodium azide
<b>Recommended Storage:</b>	Store at -20°C. Minimize freezing and thawing.
<b>Uses:</b>	IHC - Paraffin (3.75 µg/ml), Western blot (0.03 - 0.1 µg/ml), ELISA (1:64000) (Optimal dilution to be determined by the researcher)
<b>Size:</b>	50 µg
<b>Concentration:</b>	0.5 mg/ml

**Immunohistochemistry Image:**



Anti-COMT antibody IHC of human small intestine. Immunohistochemistry of formalin-fixed, paraffin-embedded tissue after heat-induced antigen retrieval. Antibody LS-B4343 concentration 3.75 ug/ml.

**Immunohistochemistry Image:**



Anti-COMT antibody IHC of human testis. Immunohistochemistry of formalin-fixed, paraffin-embedded tissue after heat-induced antigen retrieval. Antibody LS-B4343 concentration 3.75 ug/ml.

**Western Blot Image:**



Staining of human testis lysate (35 ug protein in RIPA buffer) with antibody (0.03 ug/ml). Primary incubation was 1 hour. Detected by chemiluminescence.

**Requested From:**

Japan

Laboratory Reagent For In Vitro Research Use Only

Not for resale without prior written consent from LifeSpan BioSciences, Inc.

Created on 9/23/2014

© 2014 LifeSpan BioSciences