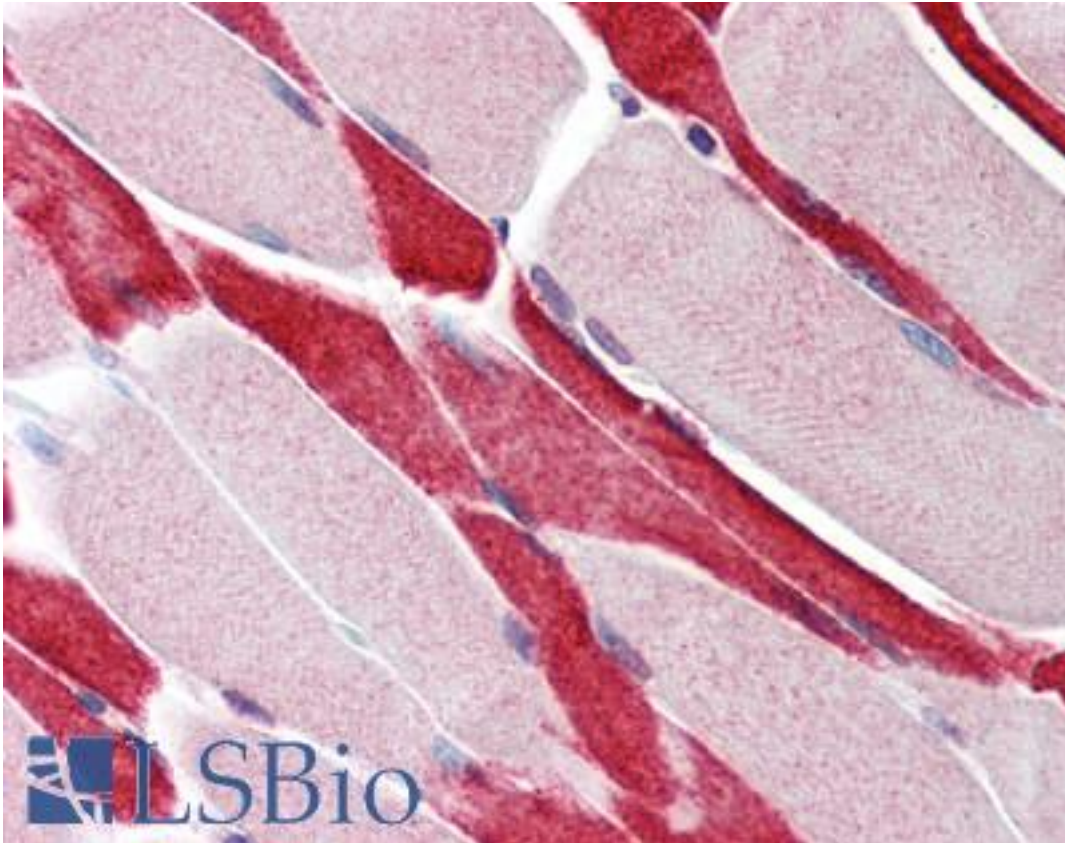


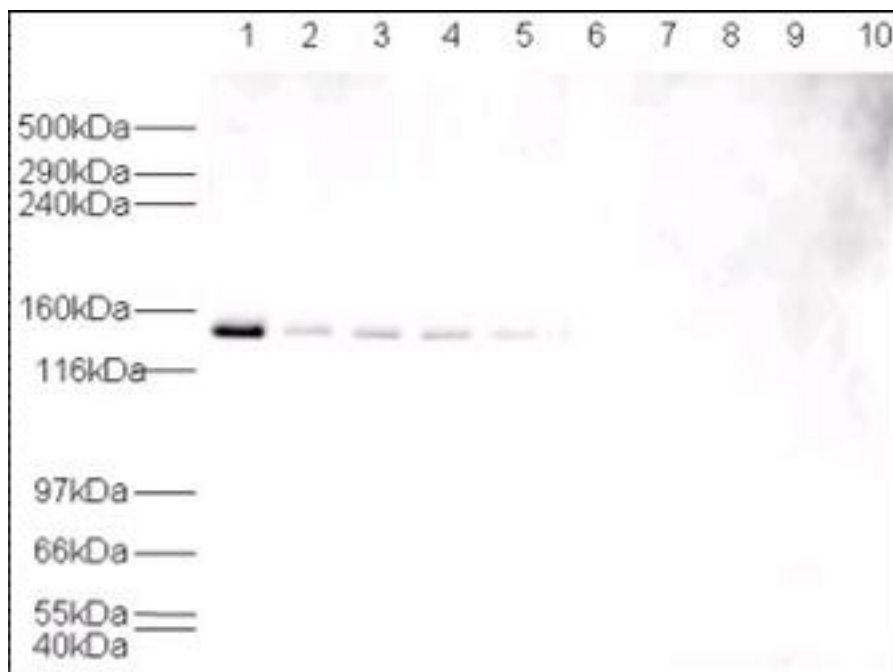
HAUSP / USP7 Rabbit anti-Human Polyclonal (aa30-41) Antibody - LS-B434 - LSBio	
CatalogID:	LS-B434
Validation:	This antibody replaces catalog number LS-C18862. It has been validated for use in the following assays: IHC.
Target:	ubiquitin specific peptidase 7 (herpes virus-associated) (USP7)
Synonyms:	USP7 Antibody, Deubiquitinating enzyme 7 Antibody, HAUSP Antibody, TEF1 Antibody, Ubiquitin specific protease 7 Antibody, Ubiquitin thioesterase 7 Antibody
Family / Subfamily:	Protease / Cysteine C19
Host	USP7 antibody was produced in Rabbit
Clonality:	Polyclonal
Immunogen Species:	HAUSP / USP7 antibody was raised against Human
Antigen Type:	Synthetic peptide
Immunogen:	HAUSP / USP7 antibody was raised against synthetic peptide from human USP7.
Specificity:	Amino acids 30-41 of human HAUSP protein.
Epitope:	aa30-41
Reactivity:	Human
Purification:	Immunoaffinity purified
Presentation:	0.02 M potassium phosphate, 0.15 M sodium chloride, pH 7.2, 0.01% sodium azide.
Recommended Storage:	Long term: -20°C; Short term: +4°C. Avoid repeat freeze-thaw cycles.
Usage Summary:	Immunohistochemistry: LS-B434 was validated for use in immunohistochemistry on a panel of 21 formalin-fixed, paraffin-embedded (FFPE) human tissues after heat induced antigen retrieval in pH 6.0 citrate buffer. After incubation with the primary antibody, slides were incubated with biotinylated secondary antibody, followed by alkaline phosphatase-streptavidin and chromogen. The stained slides were evaluated by a pathologist to confirm staining specificity. The optimal working concentration for LS-B434 was determined to be 5 ug/ml.
Uses:	IHC - Paraffin (5 µg/ml), Western blot (1:500 - 1:2000), ELISA (1:15000 - 1:60000) (Optimal dilution to be determined by the researcher)
Size:	50 µg
Concentration:	1 mg/ml

Immunohistochemistry Image:



Anti-USP7 antibody IHC of human skeletal muscle. Immunohistochemistry of formalin-fixed, paraffin-embedded tissue after heat-induced antigen retrieval. Antibody LS-B434 concentration 5 ug/ml.

Western Blot Image:



Anti-HAUSP Antibody - Western Blot. Western blot of affinity purified anti-HAUSP antibody shows detection of HAUSP in various cell lysates at 130 kD (lane 1 - HeLa nuclear extract, lane 2 - HeLa, Lane 3 - A431, Lane 4 - MCF7, Lane 5 - 3T3). The antibody is blocked by pre-incubation with the immunizing peptide (lanes 6 - 10) using the same lysates. A 1:500 dilution of the primary antibody was used for detection followed by a 1:5000 dilution of HRP Gt-a-Rabbit IgG. Exposure time was 30 s.

Requested From:

Japan

Laboratory Reagent For In Vitro Research Use Only

Not for resale without prior written consent from LifeSpan BioSciences, Inc.

Created on 9/23/2014

© 2014 LifeSpan BioSciences