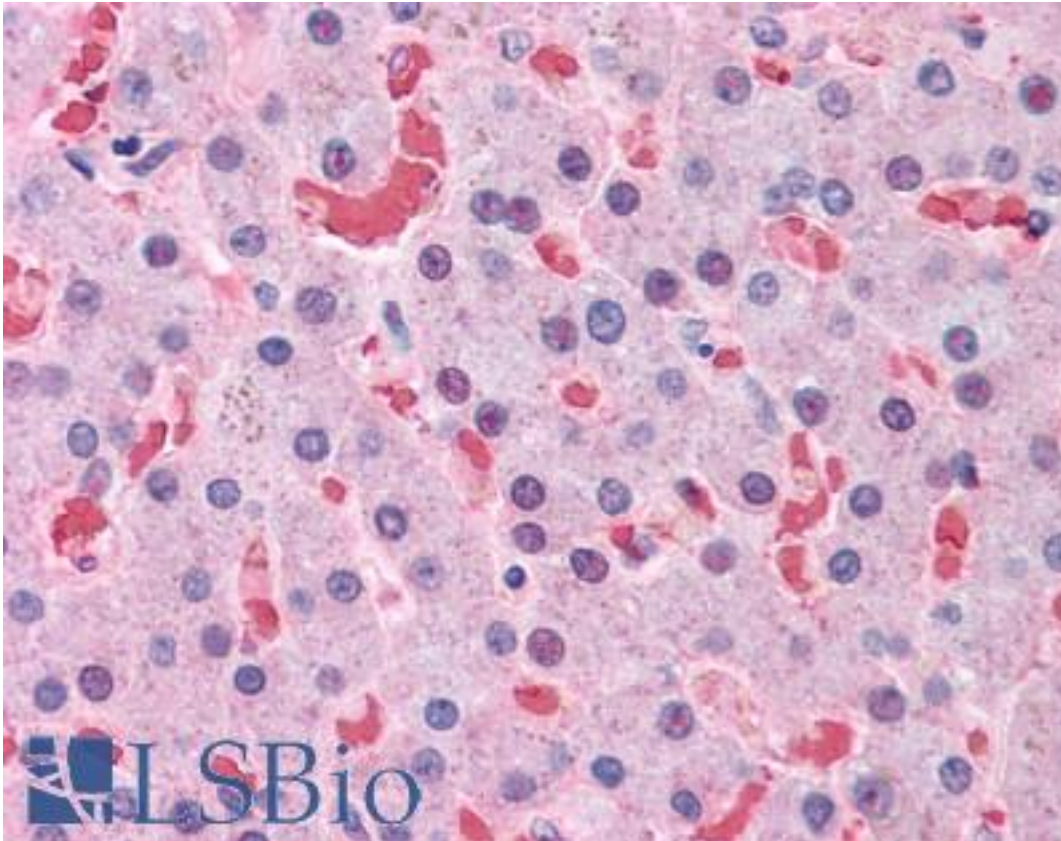


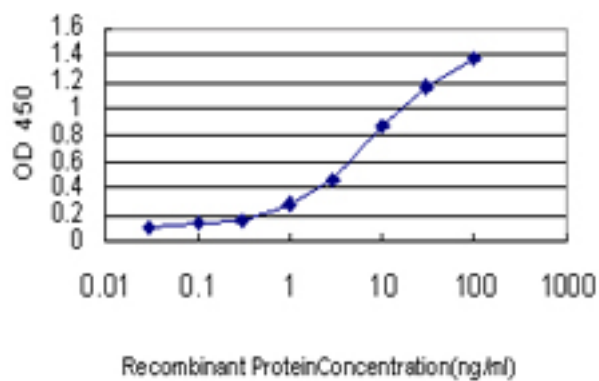
HBB / Hemoglobin Beta Mouse anti-Human Monoclonal (7B12) Antibody - LS-B4339 - LSBio	
CatalogID:	LS-B4339
Validation:	This antibody replaces catalog number LS-C104963. It has been validated for use in the following assays: IHC-P.
Target:	hemoglobin, beta (HBB)
Synonyms:	HBB Antibody, CD113t-C Antibody, Hemoglobin beta Antibody, Hemoglobin beta chain Antibody, Hemoglobin subunit beta Antibody, Beta globin chain Antibody, Beta-globin Antibody, Hemoglobin, beta Antibody
Host	HBB antibody was produced in Mouse
Clonality:	Monoclonal
Isotype:	IgG1,k
Clone Name:	7B12
Immunogen Species:	HBB / Hemoglobin Beta antibody was raised against Human
Antigen Type:	Recombinant protein
Immunogen:	HBB / Hemoglobin Beta antibody was raised against hBB (AAH07075, 38 a.a. ~ 148 a.a) partial recombinant protein with GST tag. MW of the GST tag alone is 26 KDa.
Reactivity:	Human
Purification:	Protein A purified
Presentation:	PBS, pH 7.4.
Recommended Storage:	Store at -20°C. Aliquot to avoid freeze/thaw cycles.
Usage Summary:	Immunohistochemistry (Formalin/PFA-fixed paraffin-embedded sections, 3 ug/ml) - positive control human lung. ELISA (Recombinant protein). Western blot analysis with recombinant protein.
Uses:	IHC - Paraffin (5 µg/ml), Western blot, ELISA (Optimal dilution to be determined by the researcher)
Size:	50 µg
Concentration:	0.5 mg/ml

Immunohistochemistry Image:



Anti-HBB antibody IHC of human liver. Immunohistochemistry of formalin-fixed, paraffin-embedded tissue after heat-induced antigen retrieval. Antibody LS-B4339 concentration 5 ug/ml.

ELISA Image:



Detection limit for recombinant GST tagged HBB is approximately 0.1 ng/ml as a capture antibody.

Requested From:

Japan

Laboratory Reagent For In Vitro Research Use Only

Not for resale without prior written consent from LifeSpan BioSciences, Inc.

Created on 9/23/2014

© 2014 LifeSpan BioSciences