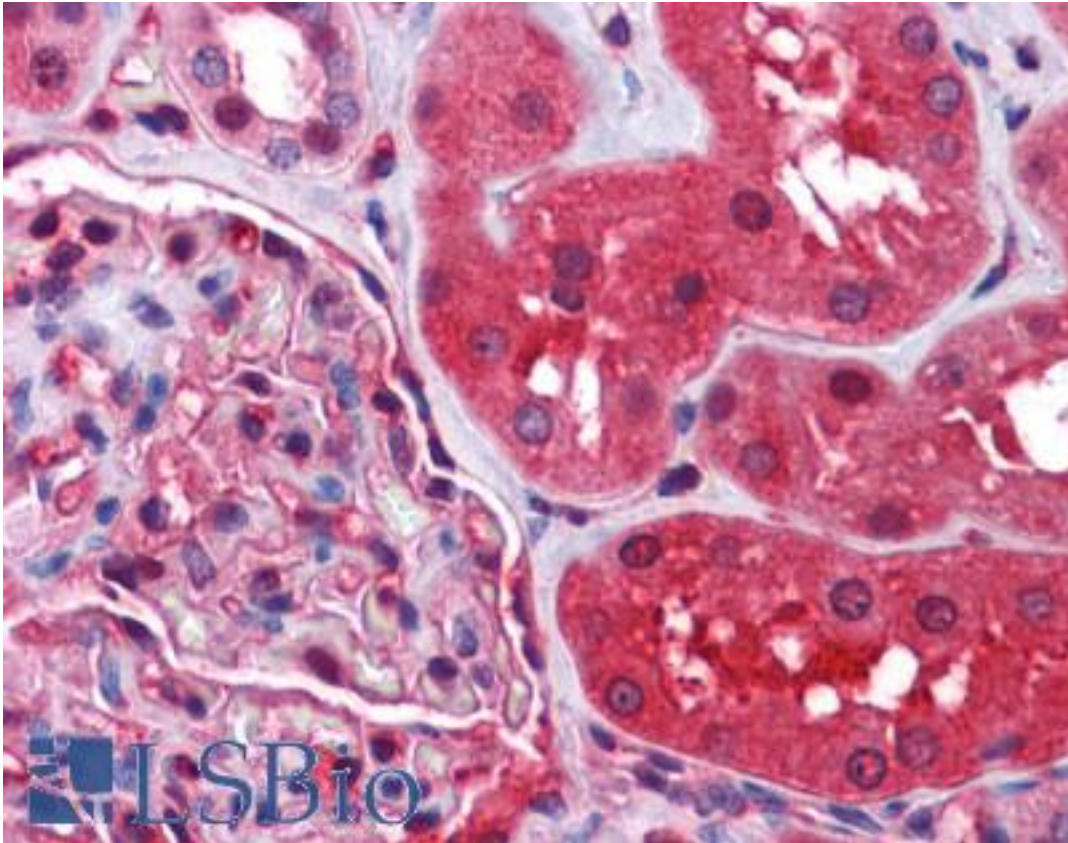


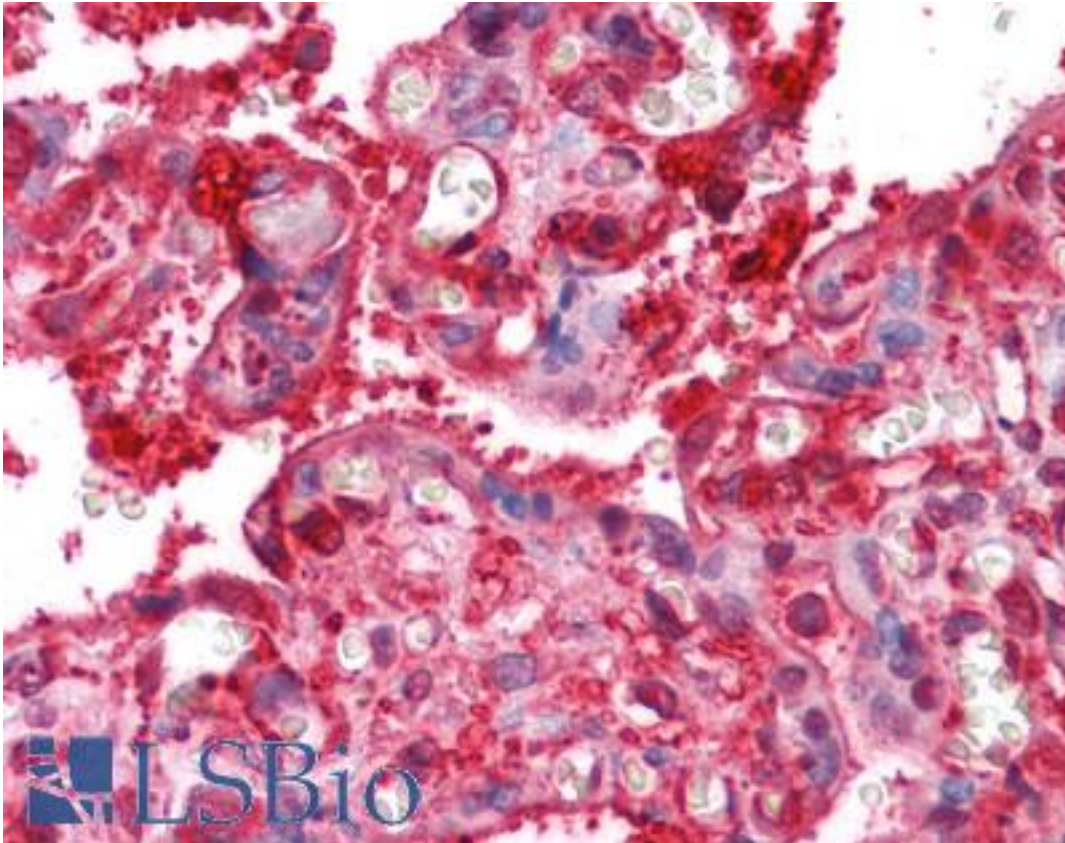
RDX / Radixin Goat anti-Human Polyclonal (Internal) Antibody - LS-B4336 - LSBio	
CatalogID:	LS-B4336
Validation:	This antibody replaces catalog number LS-C34679. It has been validated for use in the following assays: IHC-P.
Target:	radixin (RDX)
Synonyms:	RDX Antibody, Radixin Antibody, DFNB24 Antibody
Host	RDX antibody was produced in Goat
Clonality:	Polyclonal
Immunogen Species:	RDX / Radixin antibody was raised against Human
Antigen Type:	Synthetic peptide
Immunogen:	RDX / Radixin antibody was raised against synthetic peptide C-QARDETKKTQND from an internal region of human RDX / Radixin (NP_002897.1). Percent identity by BLAST analysis: Human, Gorilla, Gibbon, Monkey, Marmoset, Mouse, Rat, Hamster, Elephant, Panda, Dog, Bat, Bovine, Horse, Rabbit, Pig, Opossum, Turkey, Chicken, Platypus, Pufferfish (100%); Xenopus, Stickleback, Zebrafish (92%); Lizard, Salmon (83%).
Specificity:	Human RDX / Radixin.
Epitope:	Internal
Reactivity:	Human, Gorilla, Gibbon, Monkey, Mouse, Rat, Bat, Bovine, Dog, Hamster, Horse, Pig, Rabbit, Chicken
Predicted Reactivity:	Xenopus, Zebrafish
Purification:	Immunoaffinity purified
Presentation:	Tris-buffered saline, pH 7.3, 0.5% BSA, 0.02% sodium azide
Recommended Storage:	Store at -20°C. Minimize freezing and thawing.
Usage Summary:	Peptide ELISA: antibody detection limit dilution 1:4000. Western blot: Approx 80 kDa band observed in Human Lymph Node, Tonsil and Spleen lysates (calculated MW of 68.6 kDa according to NP_002897.1). The observed molecular weight corresponds to earlier findings in literature with different antibodies (Magendantz et al, J Biol Chem. 1995 Oct 27;270(43):25324-7.; PMID: 7592691). Recommended concentration: 1-3 ug/ml.
Uses:	IHC - Paraffin (2.5 µg/ml), Western blot (1 - 3 µg/ml), ELISA (1:4000) (Optimal dilution to be determined by the researcher)
Size:	50 µg
Concentration:	0.5 mg/ml

Immunohistochemistry Image:



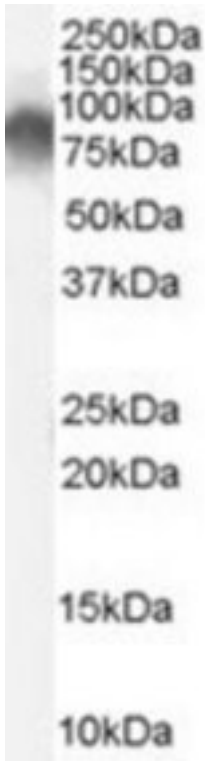
Anti-Radixin antibody IHC of human kidney. Immunohistochemistry of formalin-fixed, paraffin-embedded tissue after heat-induced antigen retrieval. Antibody LS-B4336 concentration 2.5 ug/ml.

Immunohistochemistry Image:



Anti-Radixin antibody IHC of human placenta. Immunohistochemistry of formalin-fixed, paraffin-embedded tissue after heat-induced antigen retrieval. Antibody LS-B4336 concentration 2.5 ug/ml.

Western Blot Image:



RDX antibody (0.03 ug/ml) staining of Human Tonsil lysate (35 ug protein/ml in RIPA buffer). Primary incubation was 1 hour. Detected by chemiluminescence.

Requested From:

Japan

Laboratory Reagent For In Vitro Research Use Only

Not for resale without prior written consent from LifeSpan BioSciences, Inc.

Created on 9/23/2014

© 2014 LifeSpan BioSciences