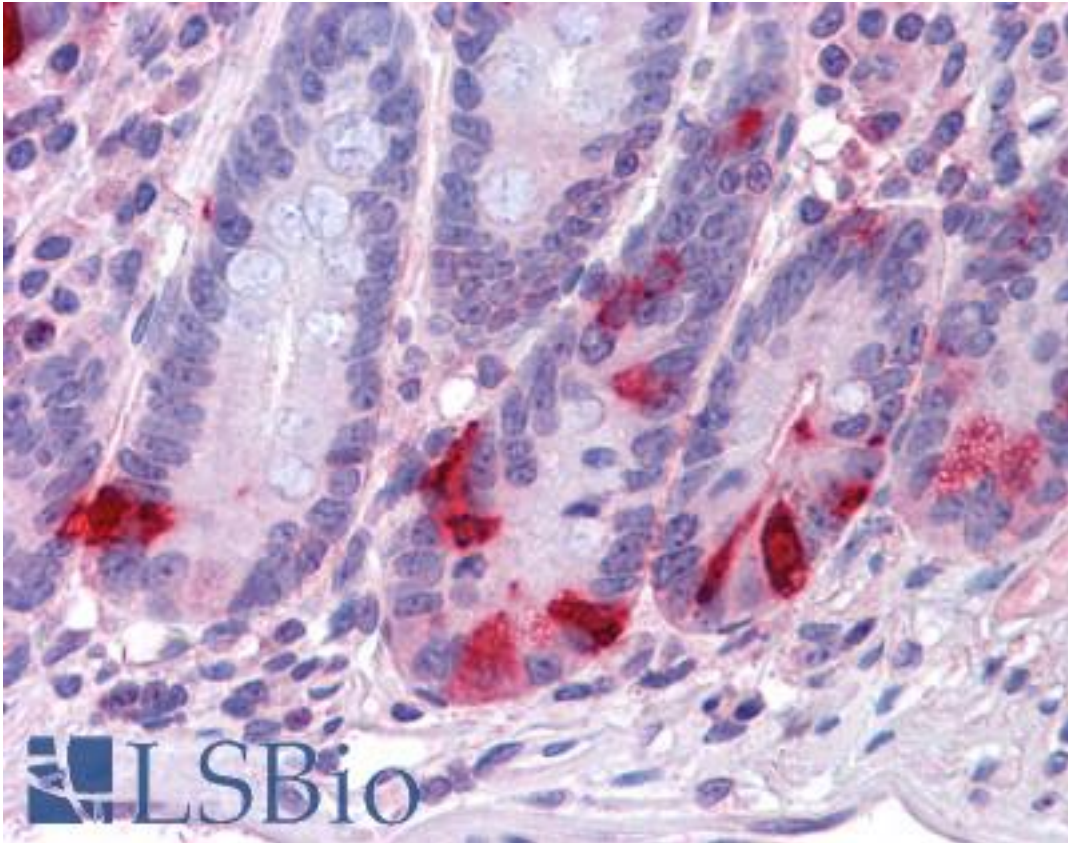


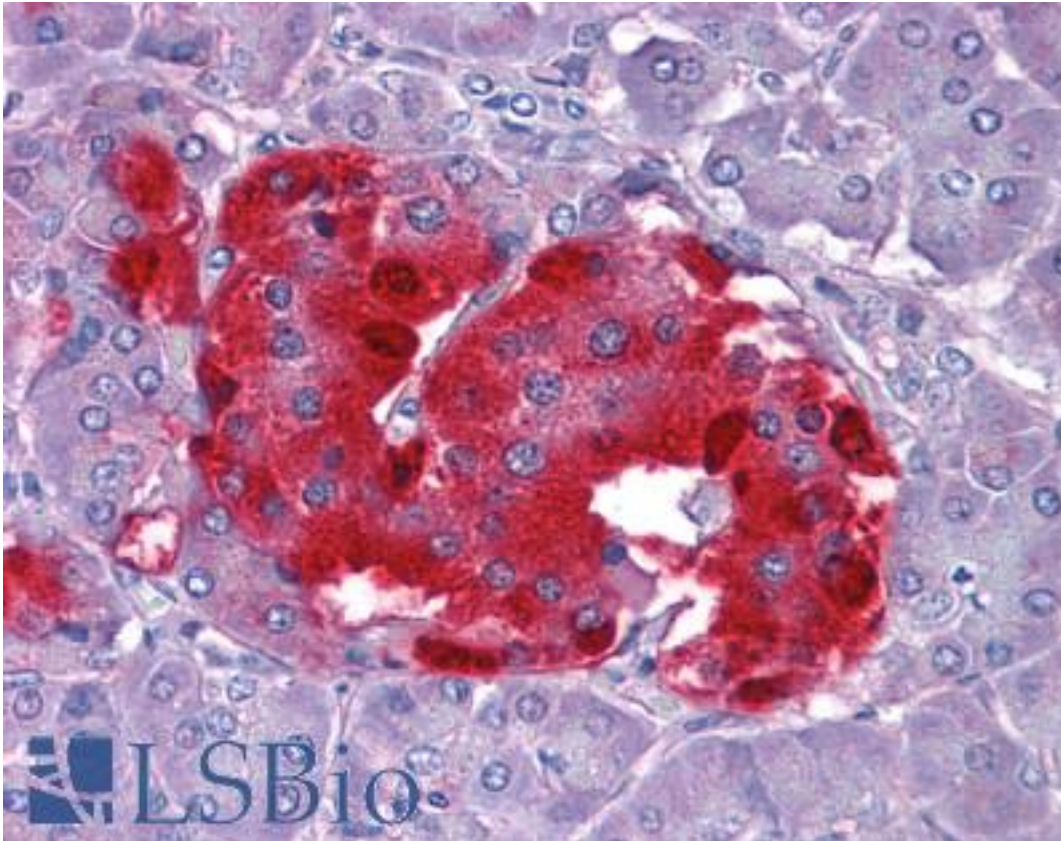
CHGA / Chromogranin A Goat anti-Human Polyclonal (Internal) Antibody - LS-B4331 - LSBio	
CatalogID:	LS-B4331
Validation:	This antibody replaces catalog number LS-C34671. It has been validated for use in the following assays: IHC-P.
Target:	chromogranin A (parathyroid secretory protein 1) (CHGA)
Synonyms:	CHGA Antibody, Chromogranin A Antibody, Chromogranin-A Antibody, Pancreastatin Antibody, Pituitary secretory protein I Antibody, Vasostatin I Antibody, SP-I Antibody, Vasostatin II Antibody
Host	CHGA antibody was produced in Goat
Clonality:	Polyclonal
Immunogen Species:	CHGA / Chromogranin A antibody was raised against Human
Antigen Type:	Synthetic peptide
Immunogen:	CHGA / Chromogranin A antibody was raised against synthetic peptide C-QGAKERAHQQKKH from an internal region of human CHGA / Chromogranin A (NP_001266.1). Percent identity by BLAST analysis: Human, Gorilla, Gibbon, Monkey, Marmoset (100%); Elephant, Panda, Dog, Bovine (92%); Pig (85%).
Specificity:	Human CHGA / Chromogranin A.
Epitope:	Internal
Reactivity:	Human, Gorilla, Gibbon, Monkey
Predicted Reactivity:	Bovine, Dog
Purification:	Immunoaffinity purified
Presentation:	Tris-buffered saline, pH 7.3, 0.5% BSA, 0.02% sodium azide
Recommended Storage:	Store at -20°C. Minimize freezing and thawing.
Usage Summary:	Peptide ELISA: antibody detection limit dilution 1:4000. Western blot: Approx 50 kDa band observed in human kidney lysates (calculated MW of 50.7 kDa according to NP_001266.1). Recommended concentration: 0.1-0.3 ug/ml.
Uses:	IHC - Paraffin (3.75 µg/ml), Western blot (0.1 - 0.3 µg/ml), ELISA (1:4000) (Optimal dilution to be determined by the researcher)
Size:	50 µg
Concentration:	0.5 mg/ml

Immunohistochemistry Image:



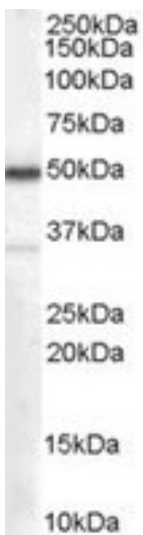
Anti-CHGA / Chromogranin A antibody IHC of human small intestine. Immunohistochemistry of formalin-fixed, paraffin-embedded tissue after heat-induced antigen retrieval. Antibody LS-B4331 concentration 3.75 ug/ml.

Immunohistochemistry Image:



Anti-CHGA / Chromogranin A antibody IHC of human pancreas. Immunohistochemistry of formalin-fixed, paraffin-embedded tissue after heat-induced antigen retrieval. Antibody LS-B4331 concentration 3.75 ug/ml.

Western Blot Image:



CHGA antibody (0.1 ug/ml) staining of human kidney lysate (35 ug protein/ml in RIPA buffer). Primary incubation was 1 hour. Detected by chemiluminescence.

Requested From:

Japan

Laboratory Reagent For In Vitro Research Use Only

Not for resale without prior written consent from LifeSpan BioSciences, Inc.

Created on 9/23/2014

© 2014 LifeSpan BioSciences