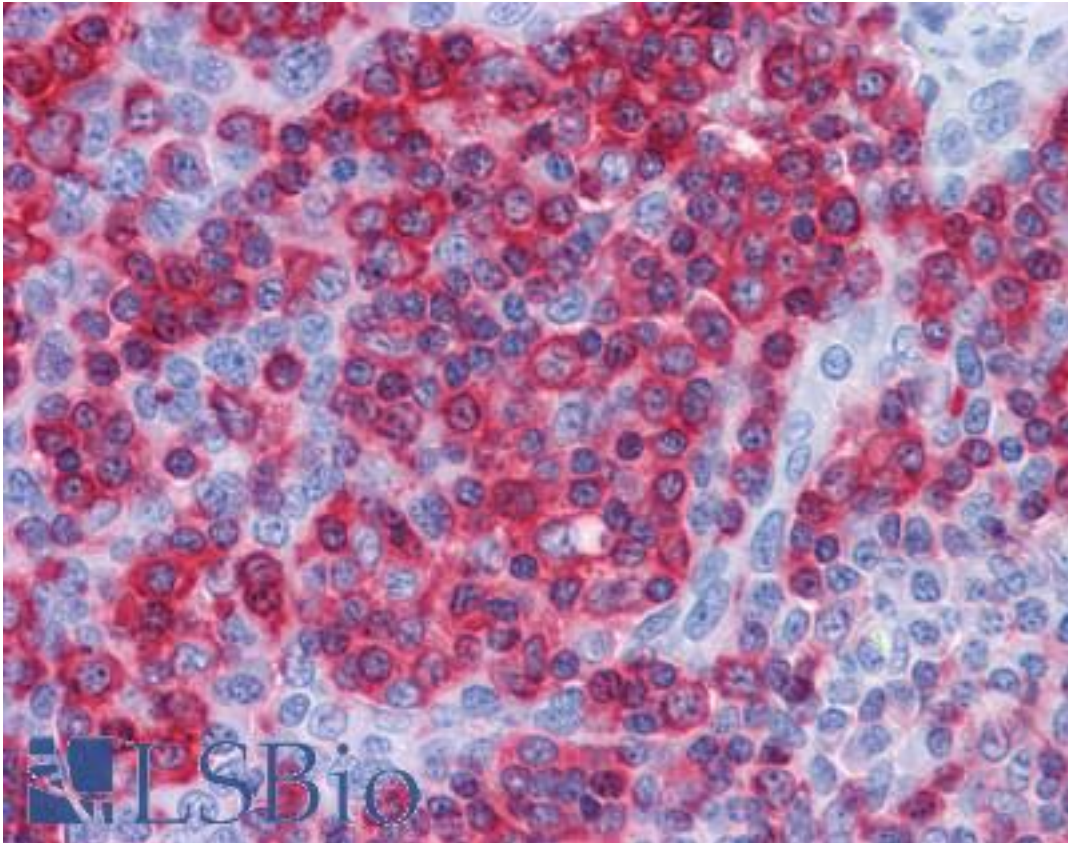


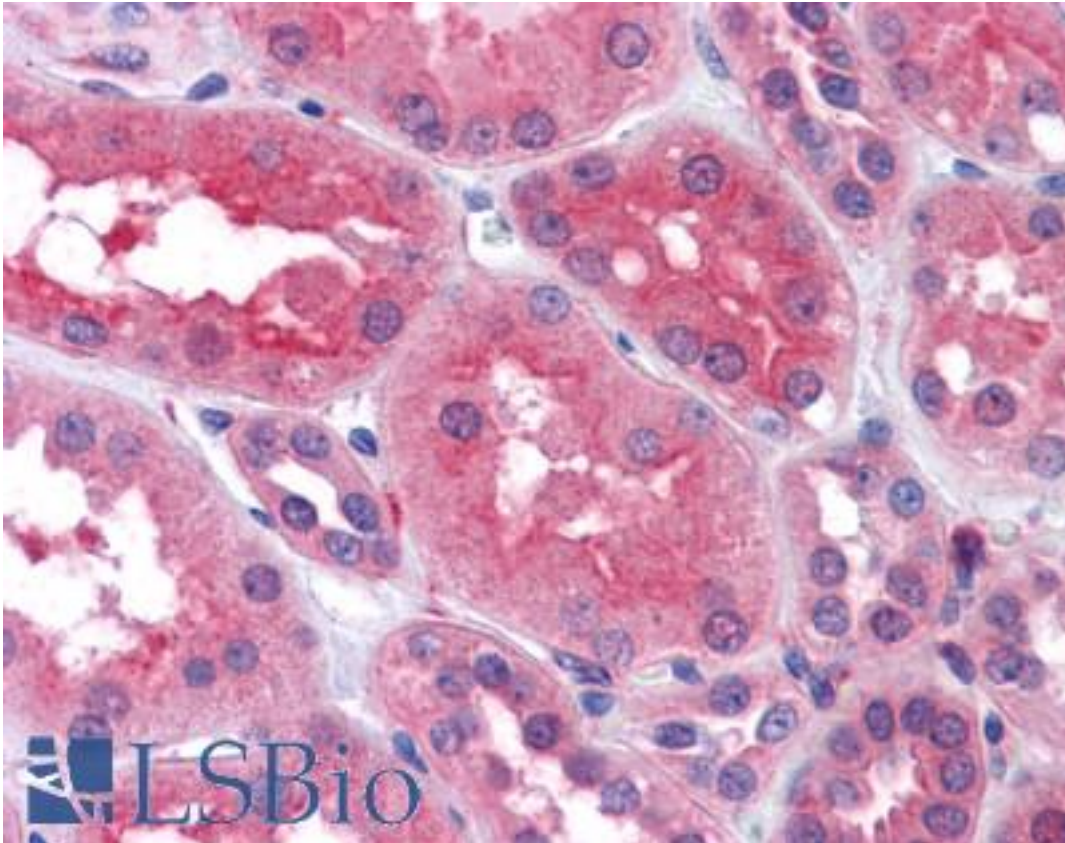
PREP / Prolyl Endopeptidase Goat anti-Human Polyclonal (Internal) Antibody - LS-B4330 - LSBio	
<b>CatalogID:</b>	LS-B4330
<b>Validation:</b>	This antibody replaces catalog number LS-C55320. It has been validated for use in the following assays: IHC-P.
<b>Target:</b>	prolyl endopeptidase (PREP)
<b>Synonyms:</b>	PREP Antibody, Prolyl endopeptidase Antibody, Prolyl oligopeptidase Antibody, Post-proline cleaving enzyme Antibody, PEP Antibody
<b>Family / Subfamily:</b>	Protease / Serine S9
<b>Host</b>	PREP antibody was produced in Goat
<b>Clonality:</b>	Polyclonal
<b>Immunogen Species:</b>	PREP / Prolyl Endopeptidase antibody was raised against Human
<b>Antigen Type:</b>	Synthetic peptide
<b>Immunogen:</b>	PREP / Prolyl Endopeptidase antibody was raised against synthetic peptide C-QYIVGRSRKQSNP from an internal region of human PREP (NP_002717.3). Percent identity by BLAST analysis: Human, Gorilla, Gibbon, Monkey, Marmoset, Mouse, Rat, Hamster, Bat, Horse (100%); Panda, Dog, Rabbit, Pig (92%); Elephant, Opossum, Turkey, Sparrow, Chicken (85%).
<b>Specificity:</b>	Human PREP.
<b>Epitope:</b>	Internal
<b>Reactivity:</b>	Human, Gorilla, Gibbon, Monkey, Mouse, Rat, Bat, Hamster, Horse
<b>Predicted Reactivity:</b>	Dog, Pig, Rabbit
<b>Purification:</b>	Immunoaffinity purified
<b>Presentation:</b>	Tris-buffered saline, pH 7.3, 0.5% BSA, 0.02% sodium azide
<b>Recommended Storage:</b>	Store at -20°C. Minimize freezing and thawing.
<b>Uses:</b>	IHC - Paraffin (3.75 µg/ml), ELISA (1:16000) (Optimal dilution to be determined by the researcher)
<b>Size:</b>	50 µg
<b>Concentration:</b>	0.5 mg/ml

**Immunohistochemistry Image:**



Anti-PREP antibody IHC of human tonsil. Immunohistochemistry of formalin-fixed, paraffin-embedded tissue after heat-induced antigen retrieval. Antibody LS-B4330 concentration 3.75 ug/ml.

**Immunohistochemistry Image:**



Anti-PREP antibody IHC of human kidney. Immunohistochemistry of formalin-fixed, paraffin-embedded tissue after heat-induced antigen retrieval. Antibody LS-B4330 concentration 3.75 ug/ml.

**Requested From:**

Japan

Laboratory Reagent For In Vitro Research Use Only

Not for resale without prior written consent from LifeSpan BioSciences, Inc.

Created on 9/23/2014

© 2014 LifeSpan BioSciences