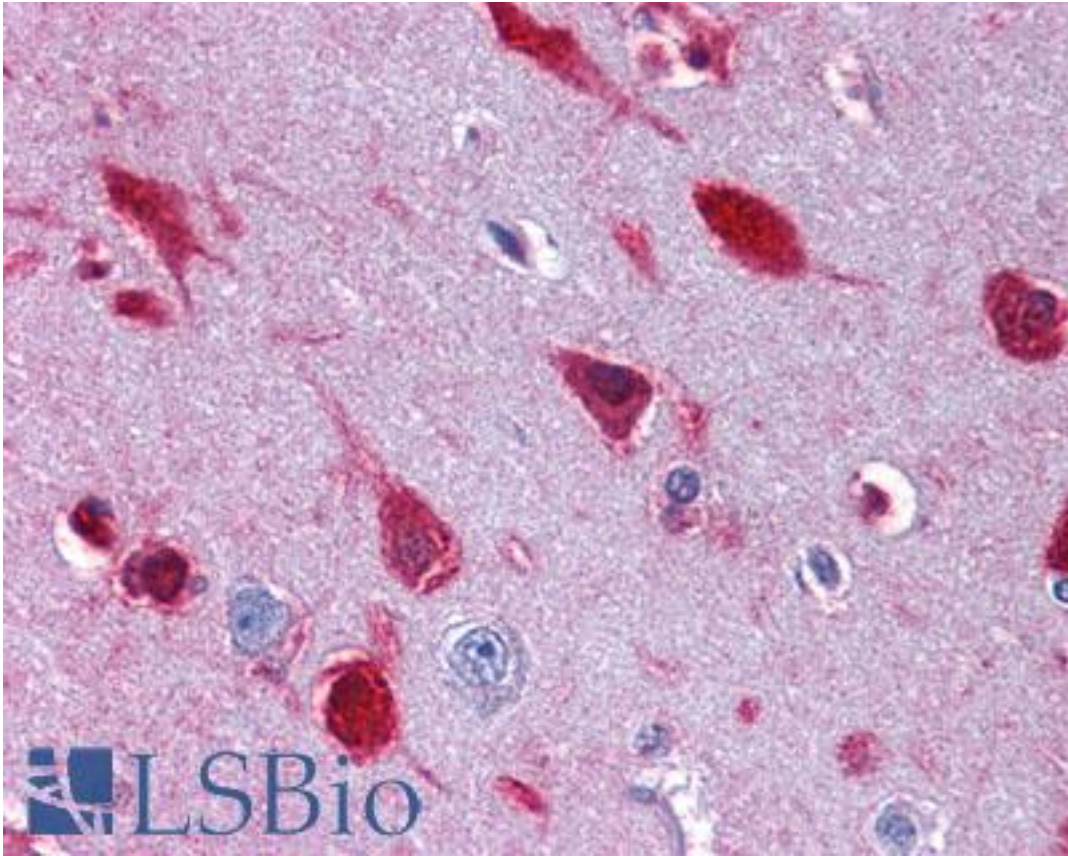


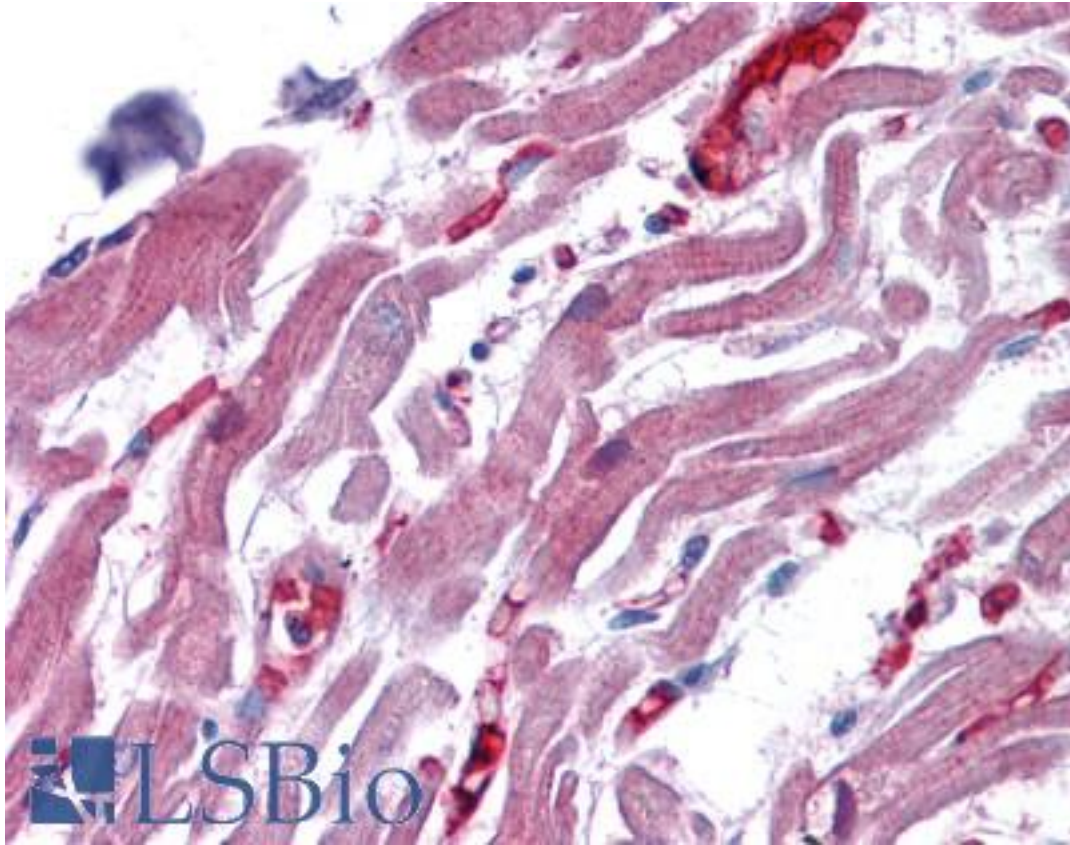
MRNP41 / RAE1 Goat anti-Human Polyclonal (C-Terminus) Antibody - LS-B4325 - LSBio	
CatalogID:	LS-B4325
Validation:	This antibody replaces catalog number LS-C55358. It has been validated for use in the following assays: IHC-P.
Target:	ribonucleic acid export 1 (RAE1)
Synonyms:	RAE1 Antibody, DJ481F12.3 Antibody, DJ800J21.1 Antibody, Mnrp41 Antibody, MRNA export factor Antibody, MRNA-binding protein, 41-kD Antibody, Rae1 protein homolog Antibody, MIG14 Antibody, Migration-inducing gene 14 Antibody, MRNA export protein Antibody, MRNP41 Antibody
Host	RAE1 antibody was produced in Goat
Clonality:	Polyclonal
Immunogen Species:	MRNP41 / RAE1 antibody was raised against Human
Antigen Type:	Synthetic peptide
Immunogen:	MRNP41 / RAE1 antibody was raised against synthetic peptide C-NAAEELKPRNKK from the C-terminus of human RAE1 (NP_003601.1; NP_001015885.1). Percent identity by BLAST analysis: Human, Gorilla, Orangutan, Gibbon, Monkey, Marmoset, Mouse, Rat, Hamster, Elephant, Panda, Dog, Bat, Bovine, Horse, Rabbit, Pig, Opossum, Turkey, Chicken, Platypus, Xenopus, Seabass, Zebrafish (100%); Salmon, Stickleback (92%).
Specificity:	Human RAE1. NP_003601 and NP_001015885 represent identical proteins.
Epitope:	C-Terminus
Reactivity:	Human, Gorilla, Orangutan, Gibbon, Monkey, Mouse, Rat, Bat, Bovine, Dog, Hamster, Horse, Pig, Rabbit, Chicken, Xenopus, Zebrafish
Purification:	Immunoaffinity purified
Presentation:	Tris-buffered saline, pH 7.3, 0.5% BSA, 0.02% sodium azide
Recommended Storage:	Store at -20°C. Minimize freezing and thawing.
Uses:	IHC - Paraffin (3.75 µg/ml), Western blot (0.03 - 0.1 µg/ml), ELISA (1:64000) (Optimal dilution to be determined by the researcher)
Size:	50 µg
Concentration:	0.5 mg/ml

Immunohistochemistry Image:



Anti-RAE1 antibody IHC of human brain, cortex. Immunohistochemistry of formalin-fixed, paraffin-embedded tissue after heat-induced antigen retrieval. Antibody LS-B4325 concentration 3.75 ug/ml.

Immunohistochemistry Image:



Anti-RAE1 antibody IHC of human heart. Immunohistochemistry of formalin-fixed, paraffin-embedded tissue after heat-induced antigen retrieval. Antibody LS-B4325 concentration 3.75 ug/ml.

Western Blot Image:



Antibody staining (0.03 ug/ml) of HepG2 lysate (RIPA buffer, 30 ug total protein per lane).
Primary incubated for 1 hour. Detected by Western blot of chemiluminescence.

Requested From:

Japan

Laboratory Reagent For In Vitro Research Use Only

Not for resale without prior written consent from LifeSpan BioSciences, Inc.

Created on 9/23/2014

© 2014 LifeSpan BioSciences