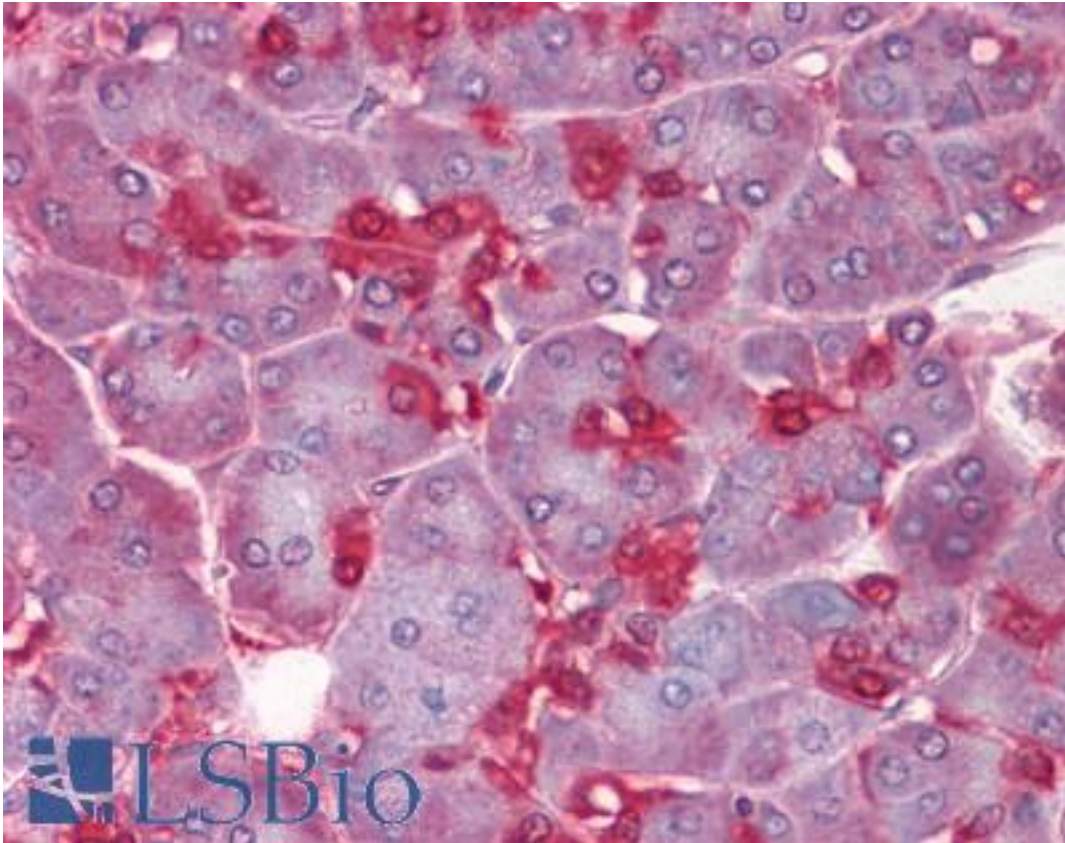


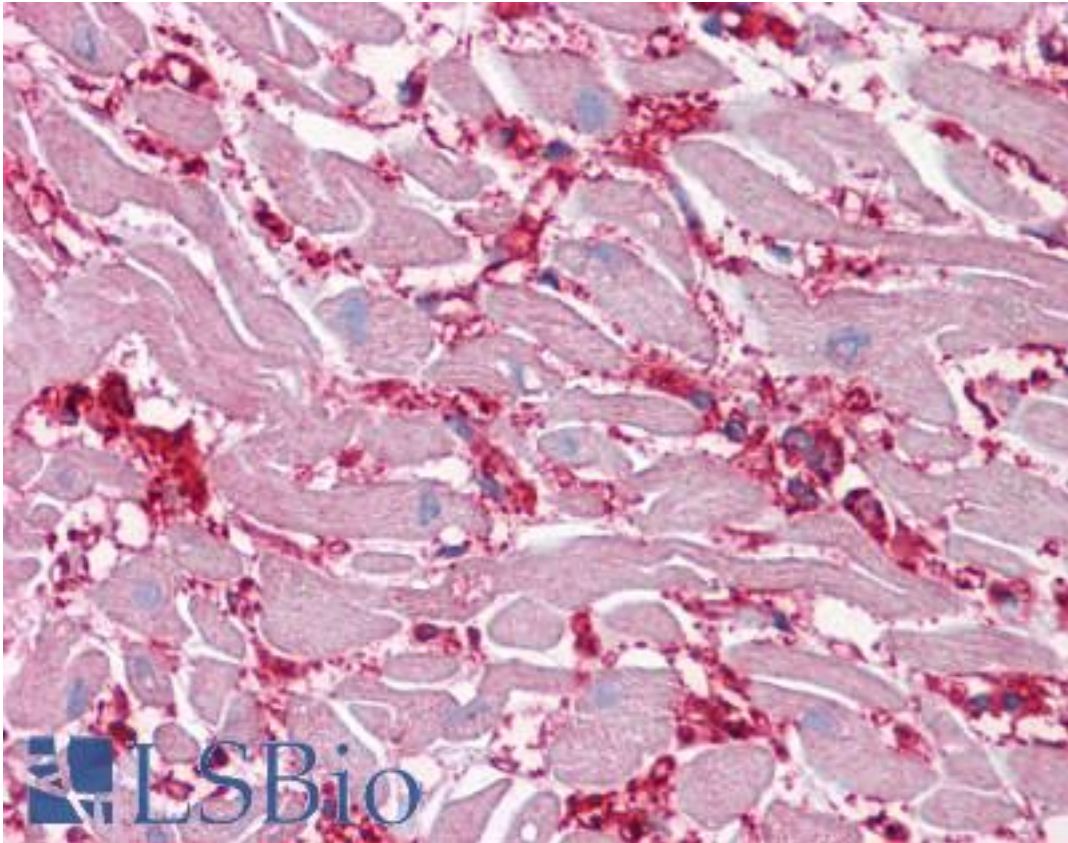
ENO1 / Alpha Enolase Mouse anti-Human Monoclonal (8G8) Antibody - LS-B4318 - LSBio	
<b>CatalogID:</b>	LS-B4318
<b>Validation:</b>	This antibody replaces catalog number LS-C104943. It has been validated for use in the following assays: IHC-P.
<b>Target:</b>	enolase 1, (alpha) (ENO1)
<b>Synonyms:</b>	ENO1 Antibody, Alpha Enolase Antibody, Alpha enolase like 1 Antibody, ENO1L1 Antibody, Enolase 1 Antibody, MBP-1 Antibody, MBPB1 Antibody, MPB1 Antibody, MYC promoter-binding protein 1 Antibody, NNE Antibody, Phosphopyruvate hydratase Antibody, Alpha-enolase Antibody, Tau-crystallin Antibody, MBP1 Antibody, MPB-1 Antibody, C-myc promoter-binding protein Antibody, Enolase 1, (alpha) Antibody, Enolase-alpha Antibody, Non-neural enolase Antibody, Plasminogen-binding protein Antibody, PPH Antibody
<b>Host</b>	ENO1 antibody was produced in Mouse
<b>Clonality:</b>	Monoclonal
<b>Isotype:</b>	IgG1,k
<b>Clone Name:</b>	8G8
<b>Immunogen Species:</b>	ENO1 / Alpha Enolase antibody was raised against Human
<b>Antigen Type:</b>	Recombinant protein
<b>Immunogen:</b>	ENO1 / Alpha Enolase antibody was raised against eNO1 (AAH22545, 1 a.a. ~ 435 a.a) full length recombinant protein with GST tag. MW of the GST tag alone is 26 KDa.
<b>Reactivity:</b>	Human
<b>Purification:</b>	Protein A purified
<b>Presentation:</b>	PBS, pH 7.4. Sourced in Ascites.
<b>Recommended Storage:</b>	Store at -20°C. Aliquot to avoid freeze/thaw cycles.
<b>Usage Summary:</b>	Western Blot (Cell lysate) - positive control MCF-7. Western Blot (Transfected lysate) - positive control transfected 293T cell line. Immunofluorescence (10 ug/ml) - positive control HeLa cells. Sandwich ELISA (Recombinant protein).
<b>Uses:</b>	IHC - Paraffin (5 µg/ml), Immunofluorescence (10 µg/ml), Western blot (1:500 - 1:1000), ELISA (Optimal dilution to be determined by the researcher)
<b>Size:</b>	50 µg
<b>Concentration:</b>	0.5 mg/ml

**Immunohistochemistry Image:**



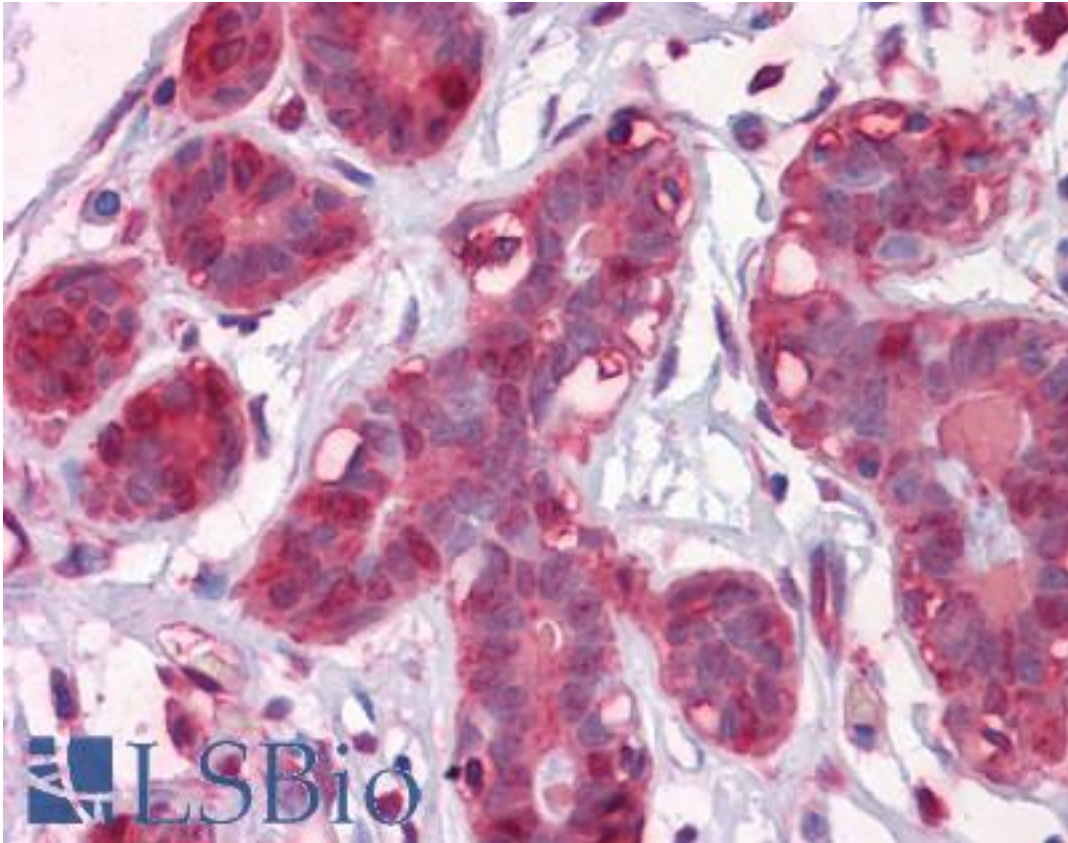
Anti-ENO1 antibody IHC of human pancreas. Immunohistochemistry of formalin-fixed, paraffin-embedded tissue after heat-induced antigen retrieval. Antibody LS-B4318 concentration 5 ug/ml.

**Immunohistochemistry Image:**



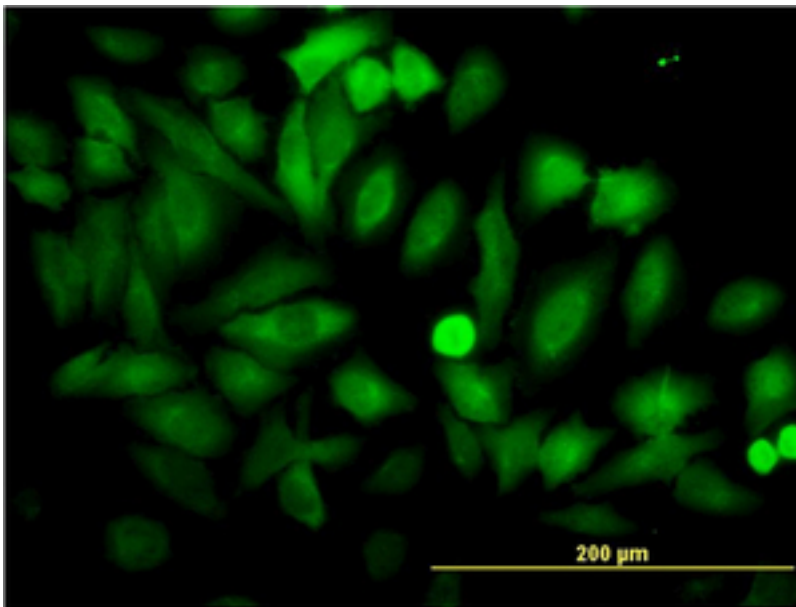
Anti-ENO1 antibody IHC of human heart. Immunohistochemistry of formalin-fixed, paraffin-embedded tissue after heat-induced antigen retrieval. Antibody LS-B4318 concentration 5 ug/ml.

**Immunohistochemistry Image:**



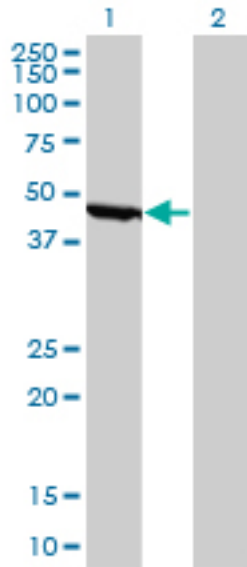
Anti-ENO1 antibody IHC of human breast. Immunohistochemistry of formalin-fixed, paraffin-embedded tissue after heat-induced antigen retrieval. Antibody LS-B4318 concentration 5 ug/ml.

**Immunofluorescence Image:**



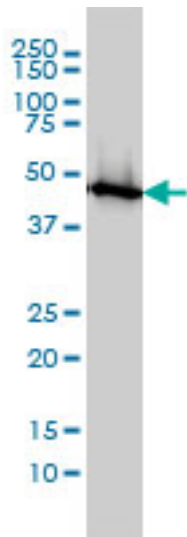
Immunofluorescence of monoclonal antibody to ENO1 on HeLa cell (antibody concentration 10 ug/ml).

**Western Blot Image:**



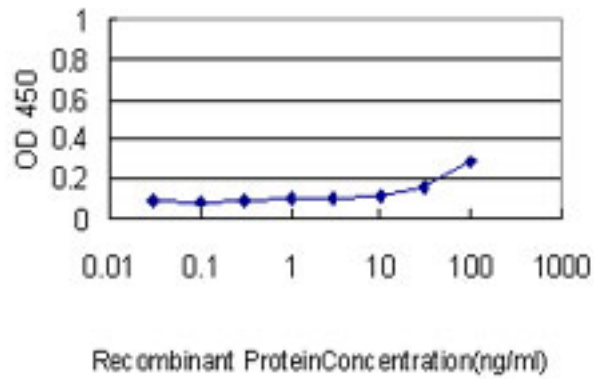
Western blot of ENO1 expression in transfected 293T cell line by ENO1 monoclonal antibody clone 8G8.

**Western Blot Image:**



ENO1 monoclonal antibody clone 8G8 Western blot of ENO1 expression in MCF-7.

**ELISA Image:**



Detection limit for recombinant GST tagged ENO1 is approximately 0.3 ng/ml as a capture antibody.

**Requested From:**

Japan

Laboratory Reagent For In Vitro Research Use Only

Not for resale without prior written consent from LifeSpan BioSciences, Inc.

Created on 9/23/2014

© 2014 LifeSpan BioSciences