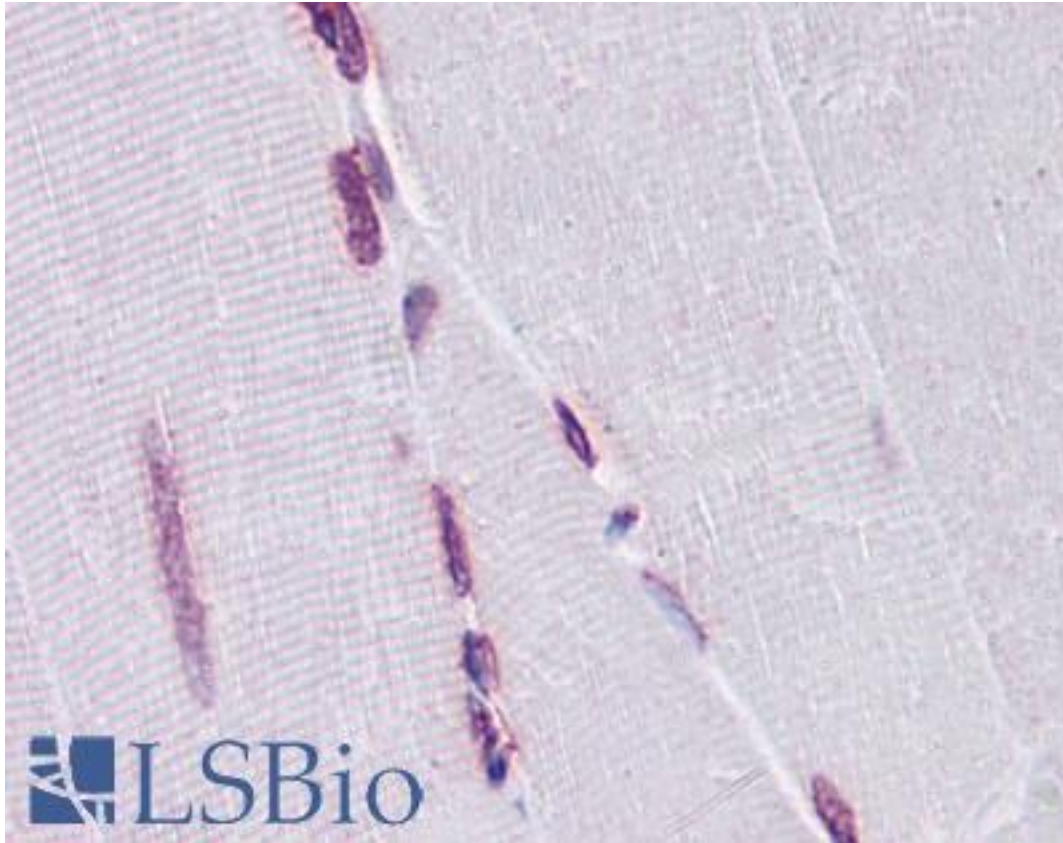


EMX2 Mouse anti-Human Monoclonal (4F7) Antibody - LS-B4317 - LSBio

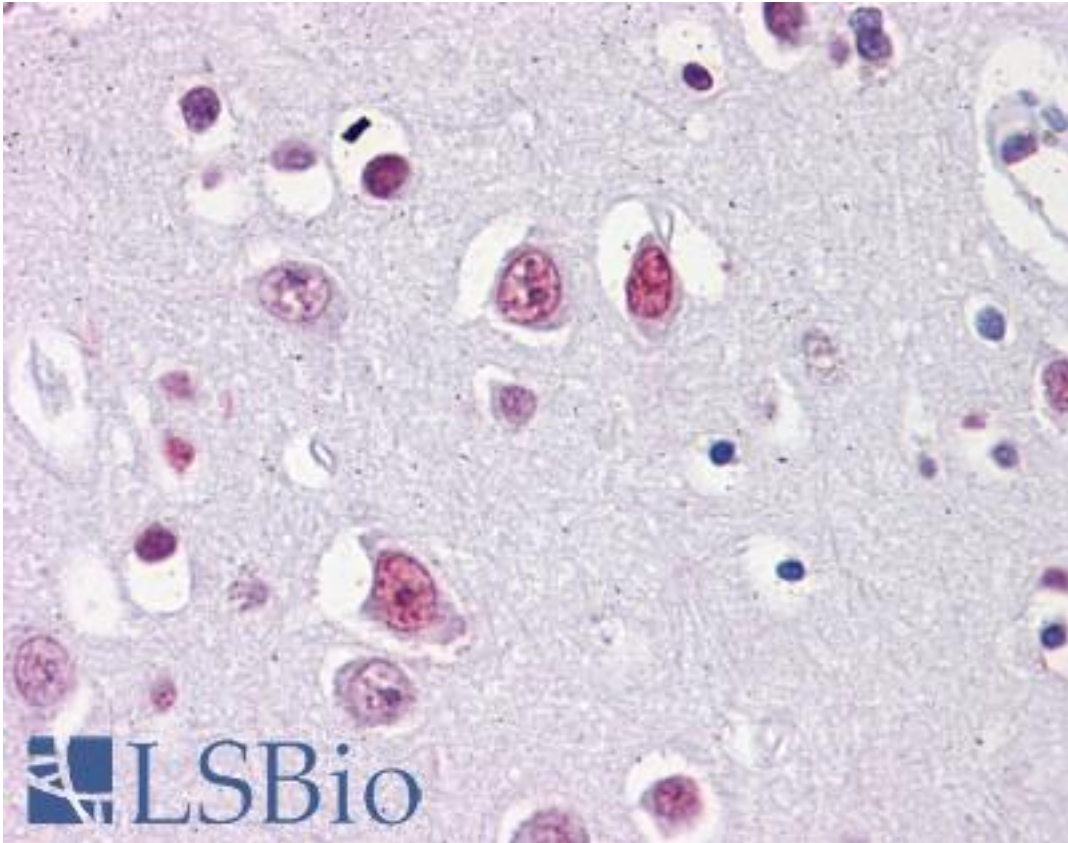
CatalogID:	LS-B4317
Validation:	This antibody replaces catalog number LS-C104942. It has been validated for use in the following assays: IHC-P.
Target:	empty spiracles homeobox 2 (EMX2)
Synonyms:	EMX2 Antibody, Empty spiracles homeobox 2 Antibody, Empty spiracles-like protein 2 Antibody, Homeobox protein EMX2 Antibody, Empty spiracles homolog 2 Antibody
Host	EMX2 antibody was produced in Mouse
Clonality:	Monoclonal
Isotype:	IgG2b,k
Clone Name:	4F7
Immunogen Species:	EMX2 antibody was raised against Human
Antigen Type:	Recombinant protein
Immunogen:	EMX2 antibody was raised against eMX2 (NP_004089, 103 a.a. ~ 201 a.a) partial recombinant protein with GST tag. MW of the GST tag alone is 26 KDa.
Reactivity:	Human
Purification:	Protein A purified
Presentation:	PBS, pH 7.4.
Recommended Storage:	Store at -20°C. Aliquot to avoid freeze/thaw cycles.
Usage Summary:	
Uses:	IHC - Paraffin (5 µg/ml), ELISA (Optimal dilution to be determined by the researcher)
Size:	50 µg
Concentration:	0.45 mg/ml

Immunohistochemistry Image:



Anti-EMX2 antibody IHC of human skeletal muscle. Immunohistochemistry of formalin-fixed, paraffin-embedded tissue after heat-induced antigen retrieval. Antibody LS-B4317 concentration 5 ug/ml.

Immunohistochemistry Image:



Anti-EMX2 antibody IHC of human brain, cortex. Immunohistochemistry of formalin-fixed, paraffin-embedded tissue after heat-induced antigen retrieval. Antibody LS-B4317 concentration 5 ug/ml.

Requested From:

Japan

Laboratory Reagent For In Vitro Research Use Only

Not for resale without prior written consent from LifeSpan BioSciences, Inc.

Created on 9/23/2014

© 2014 LifeSpan BioSciences