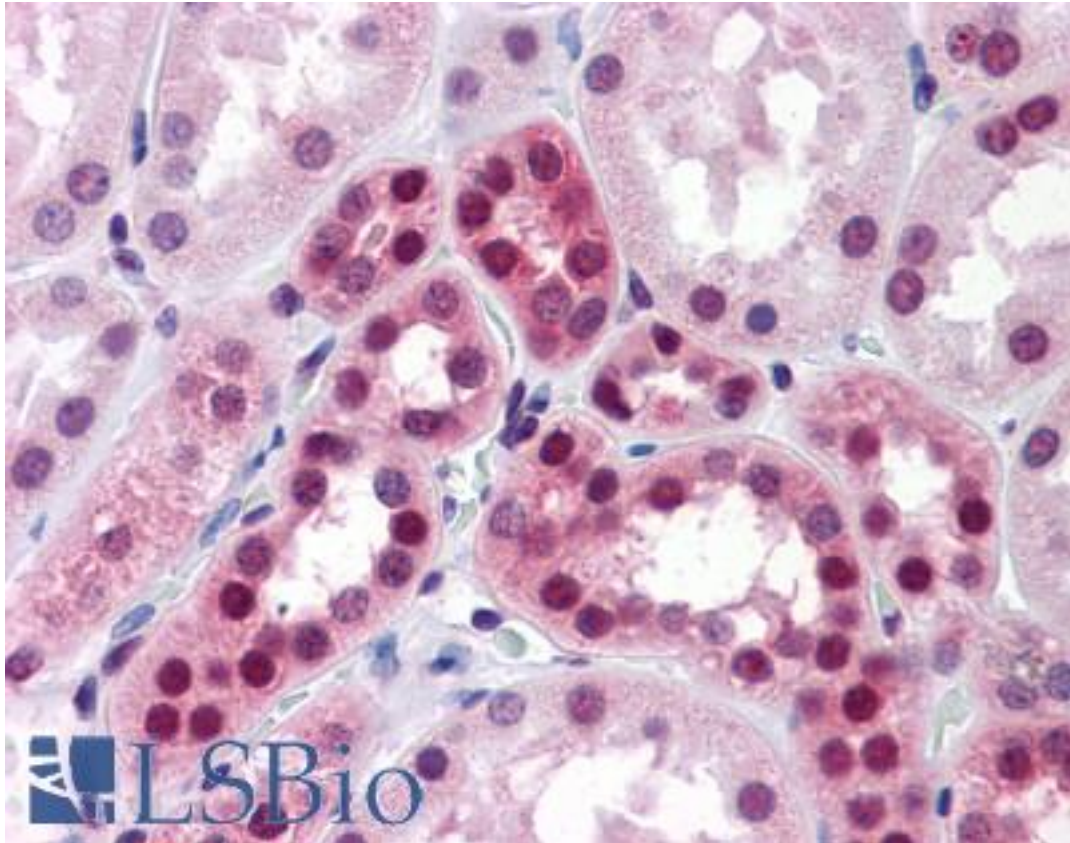


ELAVL1 / HUR Mouse anti-Human Monoclonal (4G8) Antibody - LS-B4316 - LSBio

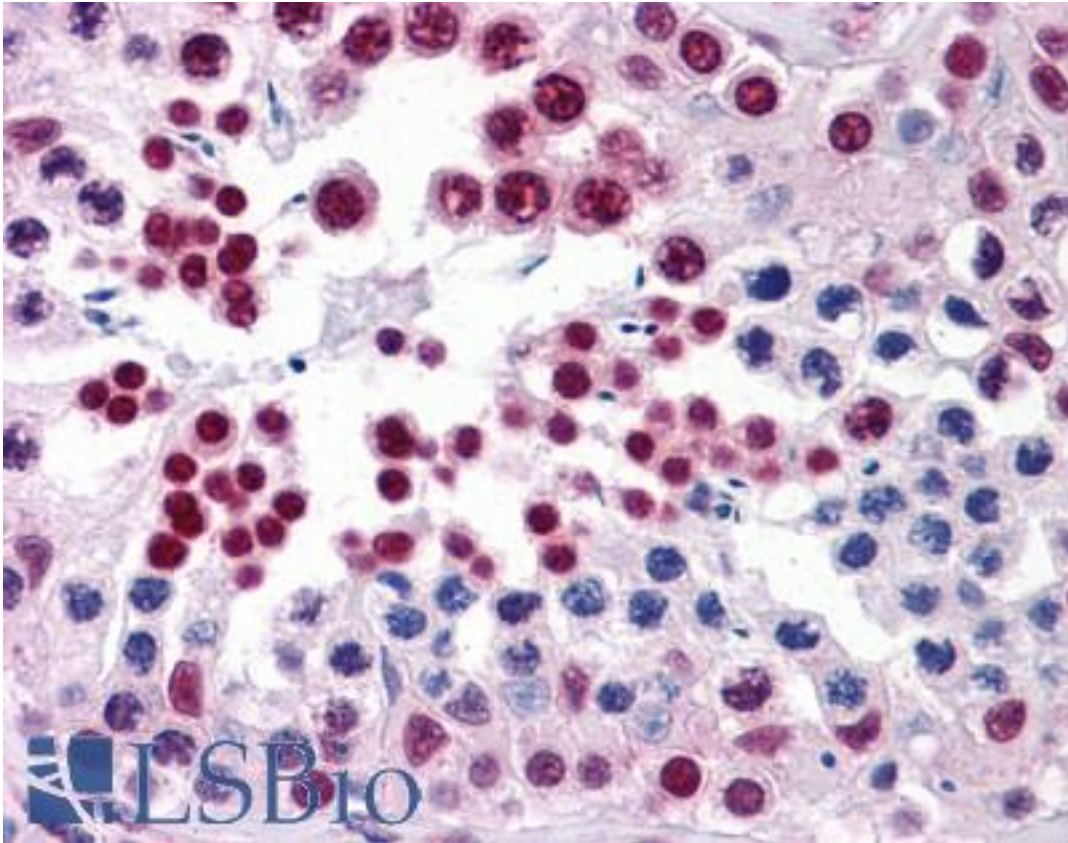
CatalogID:	LS-B4316
Validation:	This antibody replaces catalog number LS-C104941. It has been validated for use in the following assays: IHC-P.
Target:	ELAV like RNA binding protein 1 (ELAVL1)
Synonyms:	ELAVL1 Antibody, ELAV1 Antibody, Hua Antibody, HUR Antibody, Hu antigen R Antibody, ELAV-like protein 1 Antibody, Hu-antigen R Antibody, MeIG Antibody
Host	ELAVL1 antibody was produced in Mouse
Clonality:	Monoclonal
Isotype:	IgG1,k
Clone Name:	4G8
Immunogen Species:	ELAVL1 / HUR antibody was raised against Human
Antigen Type:	Recombinant protein
Immunogen:	ELAVL1 / HUR antibody was raised against eELAVL1 (AAH03376, 1 a.a. ~ 101 a.a) partial recombinant protein with GST tag. MW of the GST tag alone is 26 KDa.
Reactivity:	Human
Purification:	Protein A purified
Presentation:	PBS, pH 7.2. Sourced in Ascites.
Recommended Storage:	Store at -20°C. Aliquot to avoid freeze/thaw cycles.
Usage Summary:	Western Blot (Cell lysate) - positive control HeLa. Immunofluorescence (10 ug/ml) - positive control HeLa cells.
Uses:	IHC - Paraffin (10 µg/ml), Immunofluorescence (10 µg/ml), Western blot, ELISA (Optimal dilution to be determined by the researcher)
Size:	50 µg
Concentration:	0.42 mg/ml

Immunohistochemistry Image:



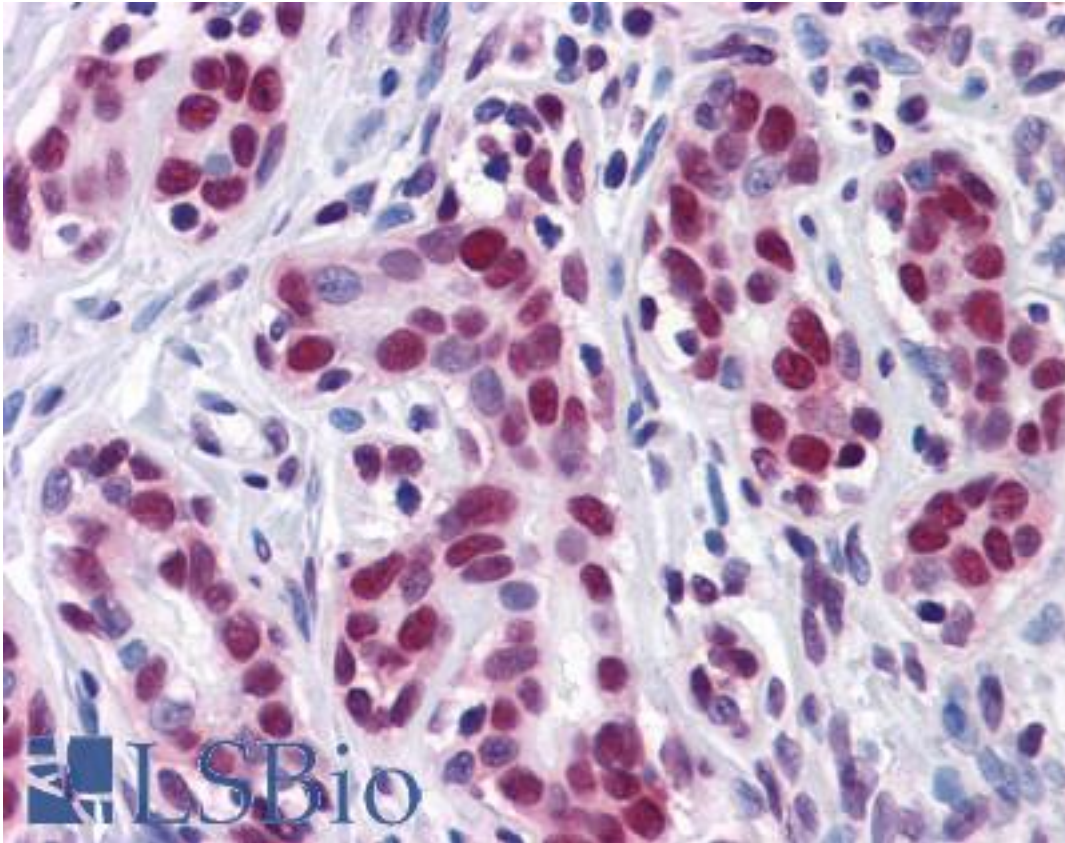
Anti-HuR antibody IHC of human kidney. Immunohistochemistry of formalin-fixed, paraffin-embedded tissue after heat-induced antigen retrieval. Antibody LS-B4316 concentration 10 ug/ml.

Immunohistochemistry Image:



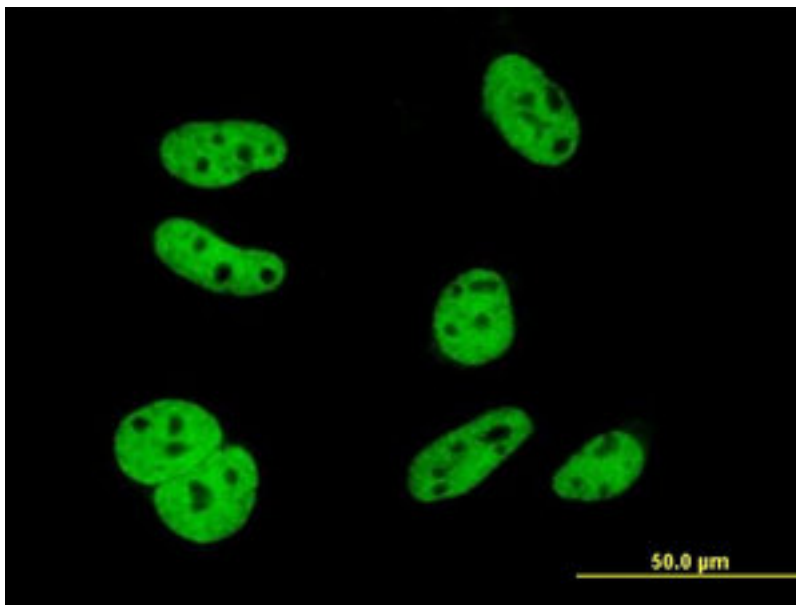
Anti-HuR antibody IHC of human testis. Immunohistochemistry of formalin-fixed, paraffin-embedded tissue after heat-induced antigen retrieval. Antibody LS-B4316 concentration 10 ug/ml.

Immunohistochemistry Image:



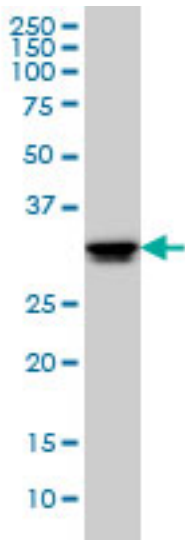
Anti-HuR antibody IHC of human breast. Immunohistochemistry of formalin-fixed, paraffin-embedded tissue after heat-induced antigen retrieval. Antibody LS-B4316 concentration 10 ug/ml.

Immunofluorescence Image:



Immunofluorescence of monoclonal antibody to ELAVL1 on HeLa cell (antibody concentration 10 ug/ml).

Western Blot Image:



ELAVL1 monoclonal antibody clone 4G8 Western blot of ELAVL1 expression in HeLa.

Requested From:

Japan

Laboratory Reagent For In Vitro Research Use Only

Not for resale without prior written consent from LifeSpan BioSciences, Inc.

Created on 9/23/2014

© 2014 LifeSpan BioSciences