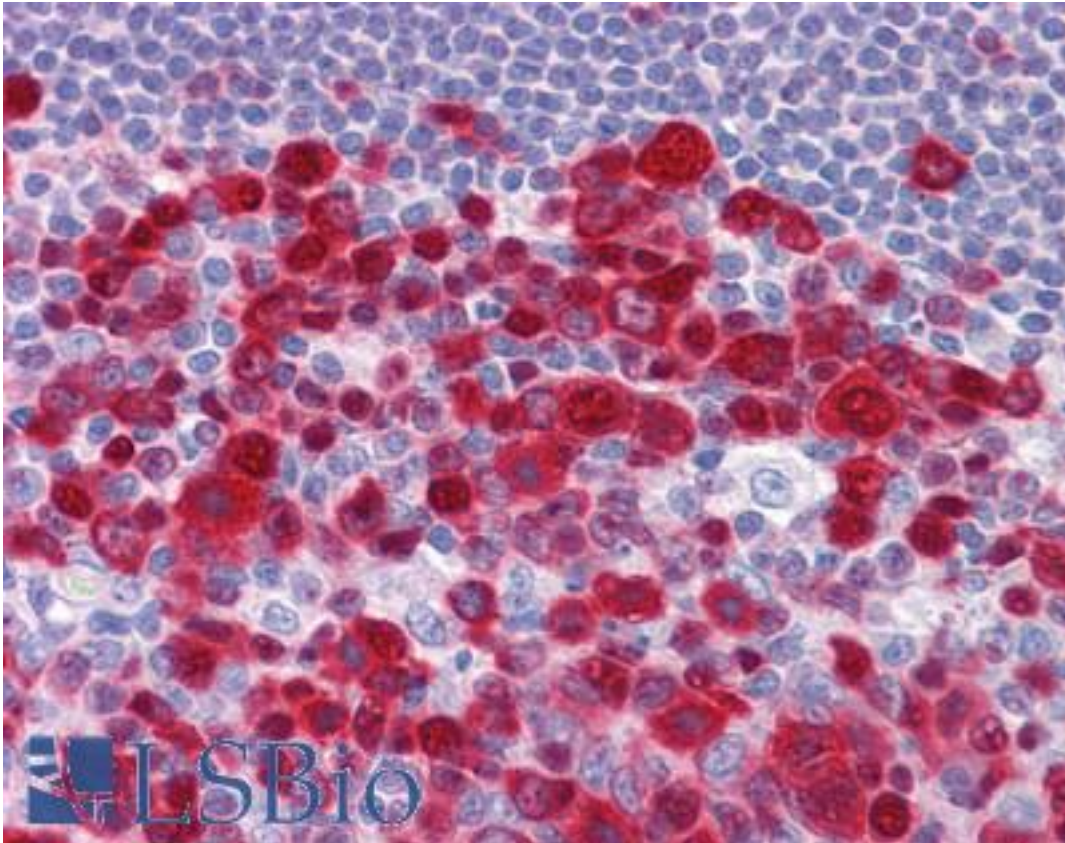


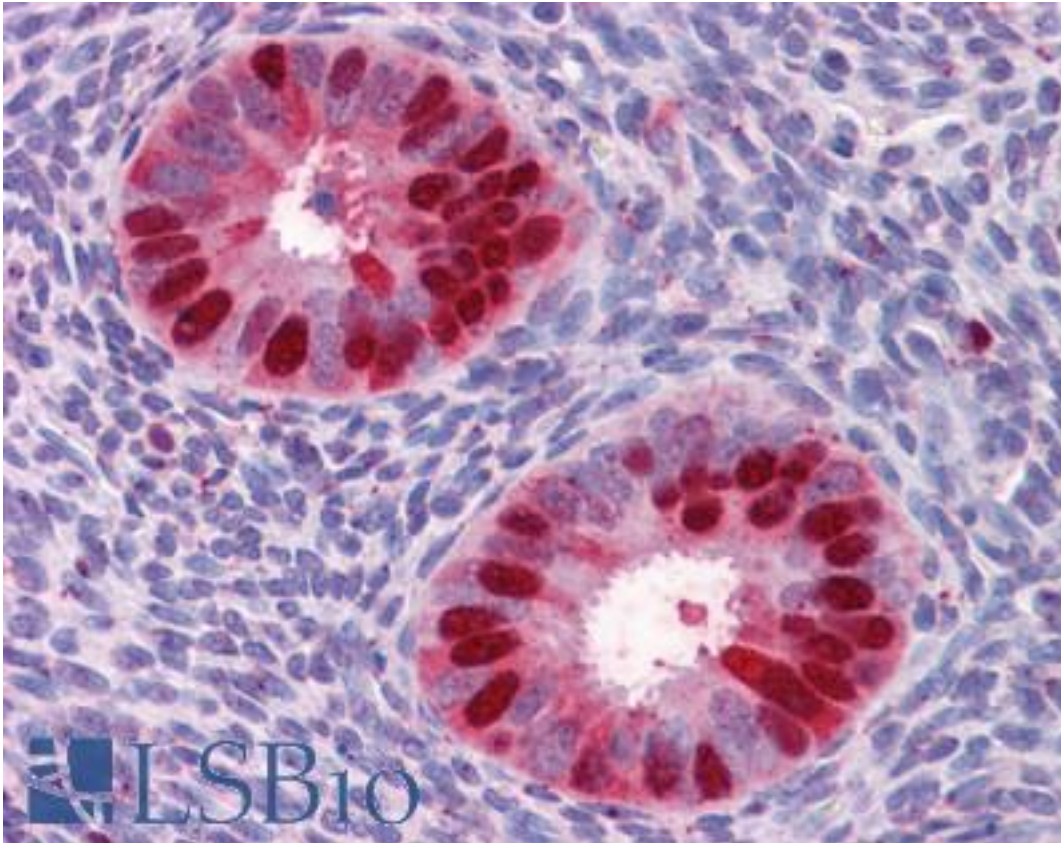
DUT / DUTPase Mouse anti-Human Monoclonal (1C9) Antibody - LS-B4315 - LSBio	
CatalogID:	LS-B4315
Validation:	This antibody replaces catalog number LS-C104939. It has been validated for use in the following assays: IHC-P.
Target:	deoxyuridine triphosphatase (DUT)
Synonyms:	DUT Antibody, Deoxyuridine triphosphatase Antibody, DUTP pyrophosphatase Antibody, DUT-N Antibody, DUTP nucleotidohydrolase Antibody, DUTPase Antibody
Host	DUT antibody was produced in Mouse
Clonality:	Monoclonal
Isotype:	IgG1,k
Clone Name:	1C9
Immunogen Species:	DUT / DUTPase antibody was raised against Human
Antigen Type:	Recombinant protein
Immunogen:	DUT / DUTPase antibody was raised against dUT (AAH33645, 68 a.a. ~ 164 a.a) partial recombinant protein with GST tag. MW of the GST tag alone is 26 KDa.
Reactivity:	Human
Purification:	Protein A purified
Presentation:	PBS, pH 7.2
Recommended Storage:	Store at -20°C. Aliquot to avoid freeze/thaw cycles.
Usage Summary:	Western Blot (Transfected lysate) - positive control transfected 293T cell line. Immunofluorescence (10 ug/ml) - positive control HeLa cells. Sandwich ELISA (Recombinant protein).
Uses:	IHC - Paraffin (5 µg/ml), Immunofluorescence (10 µg/ml), Western blot, ELISA (Optimal dilution to be determined by the researcher)
Size:	50 µg

Immunohistochemistry Image:



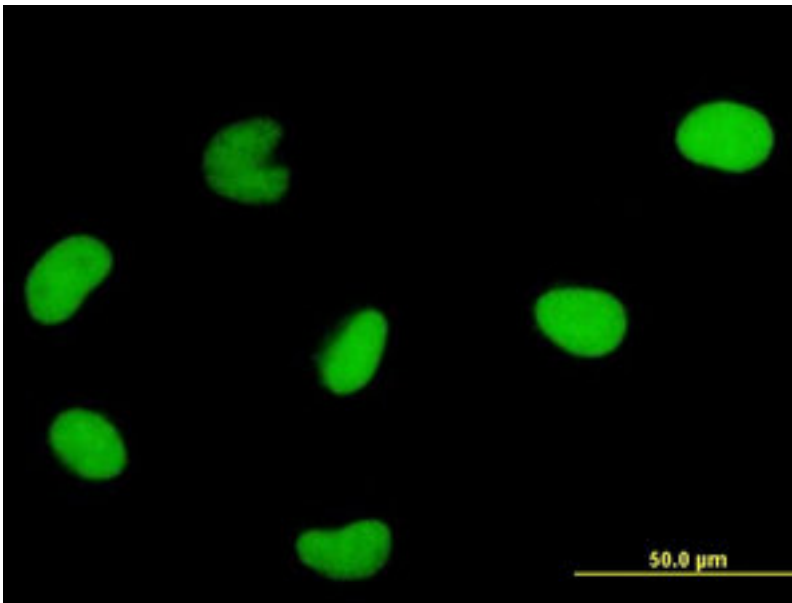
Anti-DUT antibody IHC of human tonsil. Immunohistochemistry of formalin-fixed, paraffin-embedded tissue after heat-induced antigen retrieval. Antibody LS-B4315 concentration 5 ug/ml.

Immunohistochemistry Image:



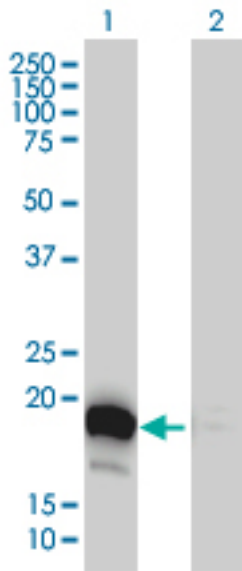
Anti-DUT antibody IHC of human uterus. Immunohistochemistry of formalin-fixed, paraffin-embedded tissue after heat-induced antigen retrieval. Antibody LS-B4315 concentration 5 ug/ml.

Immunofluorescence Image:



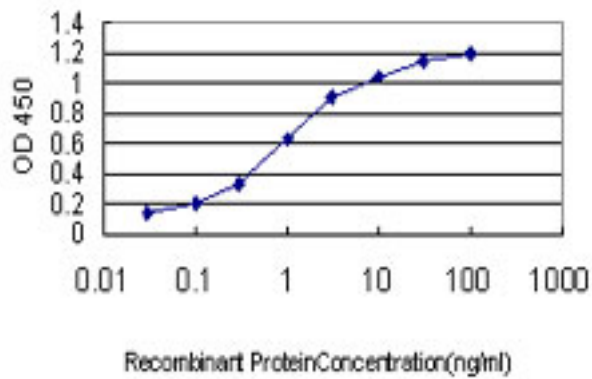
Immunofluorescence of monoclonal antibody to DUT on HeLa cell (antibody concentration 10 ug/ml).

Western Blot Image:



Western blot of DUT expression in transfected 293T cell line by DUT monoclonal antibody clone 1C9.

ELISA Image:



Detection limit for recombinant GST tagged DUT is approximately 0.03 ng/ml as a capture antibody.

Requested From:

Japan

Laboratory Reagent For In Vitro Research Use Only

Not for resale without prior written consent from LifeSpan BioSciences, Inc.

Created on 9/23/2014

© 2014 LifeSpan BioSciences