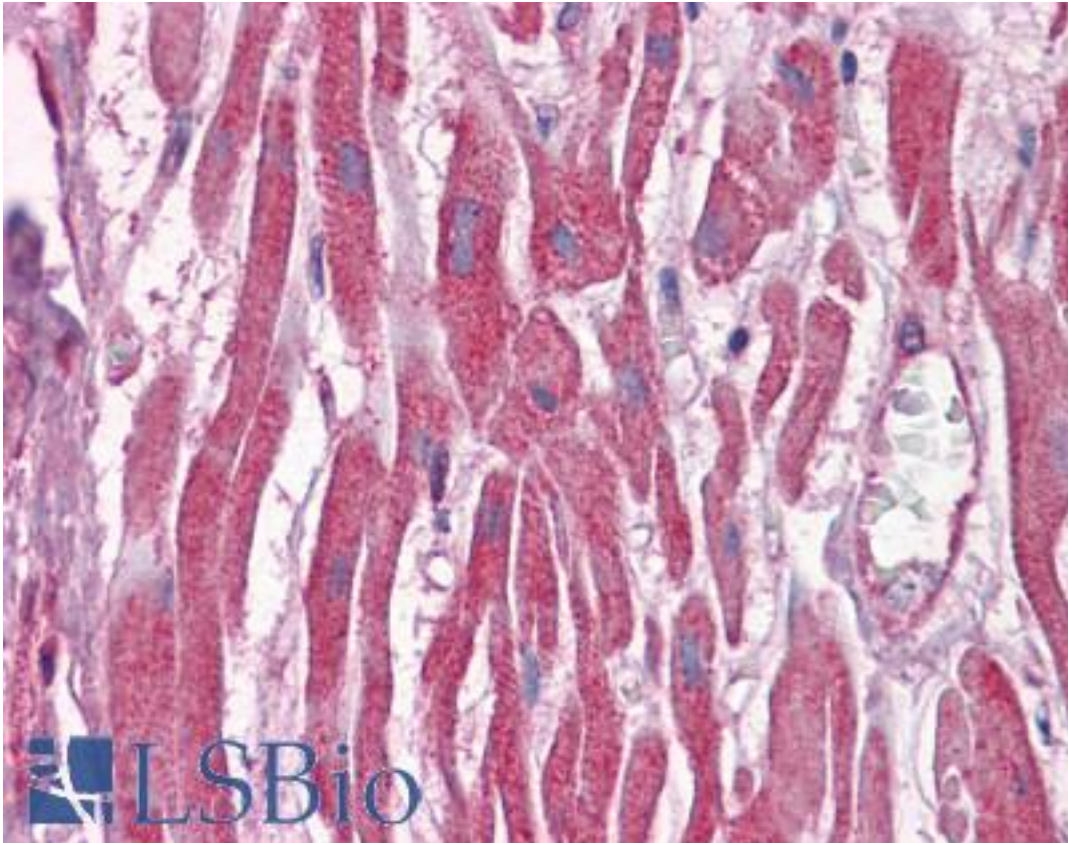


MKP3 / DUSP6 Mouse anti-Human Monoclonal (3G2) Antibody - LS-B4314 - LSBio

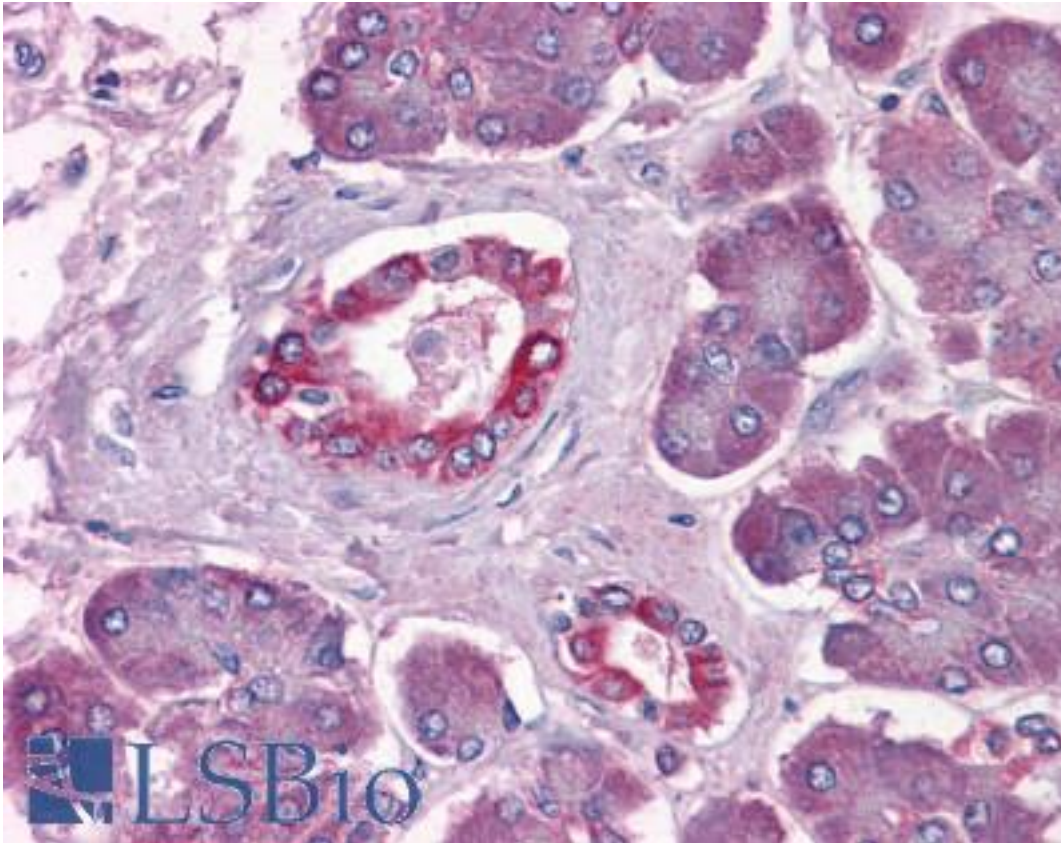
CatalogID:	LS-B4314
Validation:	This antibody replaces catalog number LS-C104938. It has been validated for use in the following assays: IHC-P.
Target:	dual specificity phosphatase 6 (DUSP6)
Synonyms:	DUSP6 Antibody, Dual specificity phosphatase 6 Antibody, MAP kinase phosphatase 3 Antibody, MKP3 Antibody, PYST1 Antibody, RVH6 Antibody, Mapk phosphatase 3 Antibody, MKP-3 Antibody, Phosphatase VH6 Antibody
Family / Subfamily:	Protein Phosphatase / Dual specificity MKP
Host	DUSP6 antibody was produced in Mouse
Clonality:	Monoclonal
Isotype:	IgG1,k
Clone Name:	3G2
Immunogen Species:	MKP3 / DUSP6 antibody was raised against Human
Antigen Type:	Recombinant protein
Immunogen:	MKP3 / DUSP6 antibody was raised against dUSP6 (AAH03143, 1 a.a. ~ 382 a.a) full length recombinant protein with GST tag. MW of the GST tag alone is 26 KDa.
Reactivity:	Human
Purification:	Protein A purified
Presentation:	PBS, pH 7.2
Recommended Storage:	Store at -20°C. Aliquot to avoid freeze/thaw cycles.
Usage Summary:	Western Blot (Transfected lysate) - positive control transfected 293T cell line. Immunofluorescence (10 µg/ml) - positive control HeLa cells. Sandwich ELISA (Recombinant protein). RNAi Knockdown (Antibody validated).
Uses:	IHC - Paraffin (5 µg/ml), Immunofluorescence (10 µg/ml), Western blot, ELISA, RNA interference (Optimal dilution to be determined by the researcher)
Size:	50 µg

Immunohistochemistry Image:



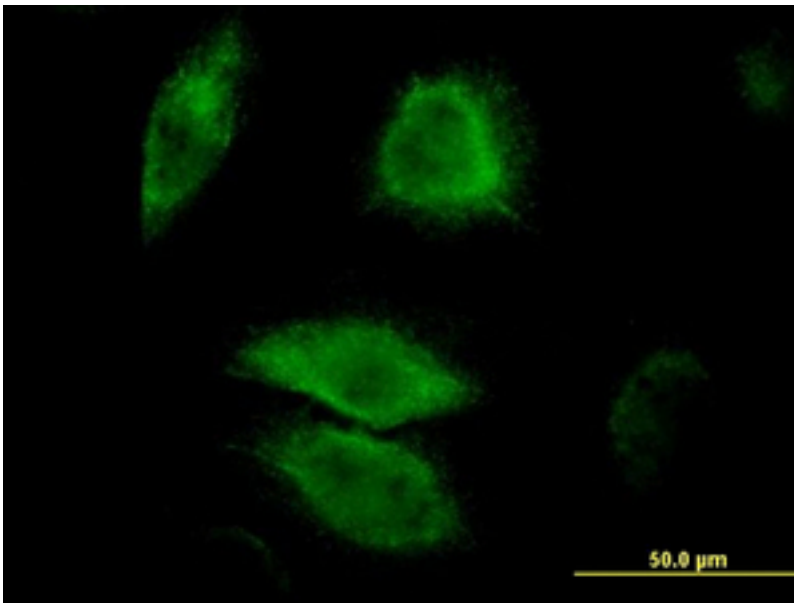
Anti-DUSP6 antibody IHC of human heart. Immunohistochemistry of formalin-fixed, paraffin-embedded tissue after heat-induced antigen retrieval. Antibody LS-B4314 concentration 5 ug/ml.

Immunohistochemistry Image:



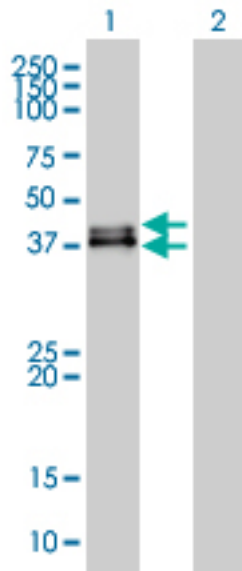
Anti-DUSP6 antibody IHC of human pancreas. Immunohistochemistry of formalin-fixed, paraffin-embedded tissue after heat-induced antigen retrieval. Antibody LS-B4314 concentration 5 ug/ml.

Immunofluorescence Image:



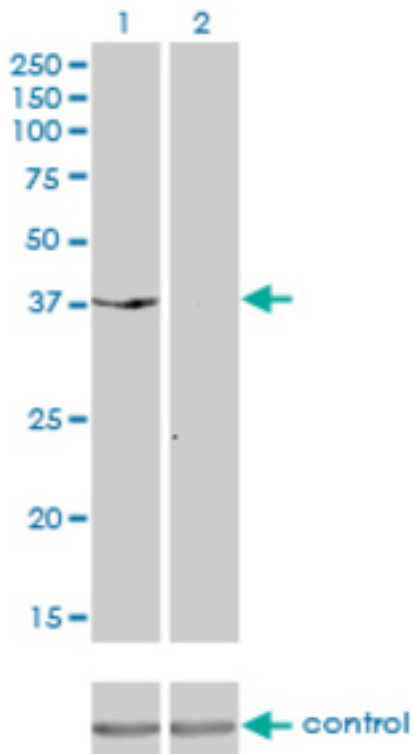
Immunofluorescence of monoclonal antibody to DUSP6 on HeLa cell (antibody concentration 10 ug/ml).

Western Blot Image:



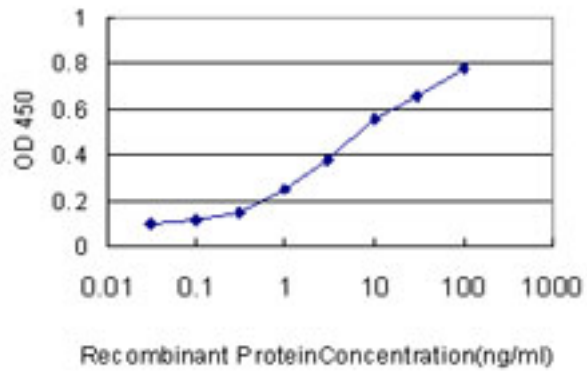
Western blot of DUSP6 expression in transfected 293T cell line by DUSP6 monoclonal antibody, clone 3G2.

RNA interference Image:



Western blot of DUSP6 over-expressed 293 cell line, cotransfected with DUSP6 Validated Chimera RNAi (Lane 2) or non-transfected control (Lane 1). Blot probed with DUSP6 monoclonal antibody clone 3G2. GAPDH (36.1 kD) used as specificity a.

ELISA Image:



Detection limit for recombinant GST tagged DUSP6 is approximately 1 ng/ml as a capture antibody.

Requested From:

Japan

Laboratory Reagent For In Vitro Research Use Only

Not for resale without prior written consent from LifeSpan BioSciences, Inc.

Created on 9/23/2014

© 2014 LifeSpan BioSciences