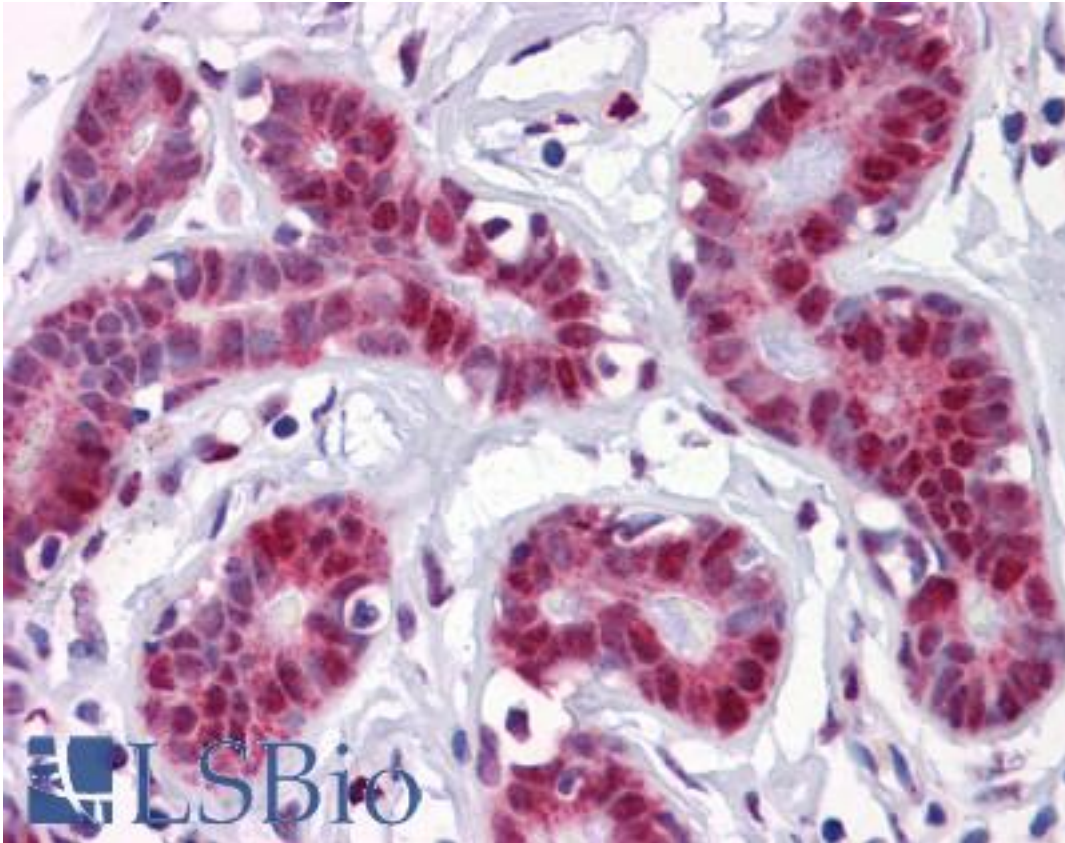


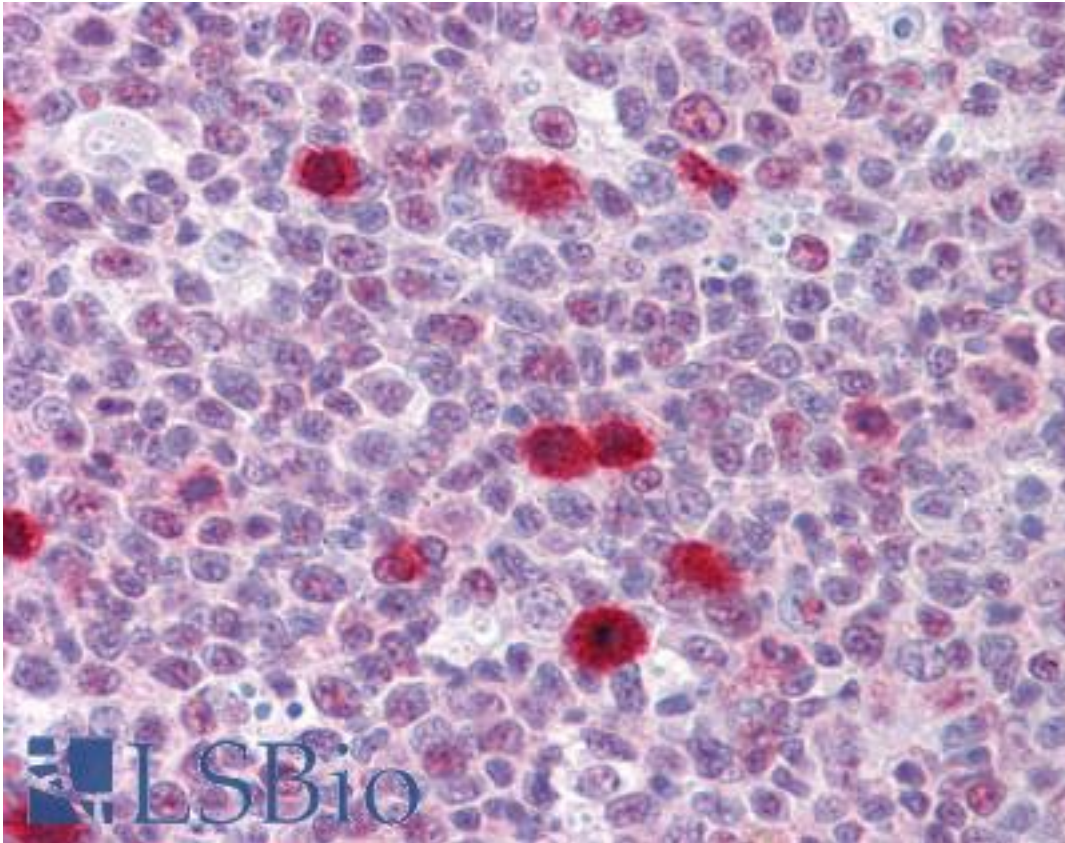
TSC22D3 / GILZ Mouse anti-Human Monoclonal (3A5) Antibody - LS-B4313 - LSBio	
CatalogID:	LS-B4313
Validation:	This antibody replaces catalog number LS-C104937. It has been validated for use in the following assays: IHC-P.
Target:	TSC22 domain family, member 3 (TSC22D3)
Synonyms:	TSC22D3 Antibody, DSIPI Antibody, DIP Antibody, DSIP-immunoreactive peptide Antibody, GILZ Antibody, TSC-22 related protein Antibody, Protein DIP Antibody, TSC22 domain family protein 3 Antibody, HDIP Antibody, TSC-22-like protein Antibody, TSC-22-related protein Antibody, TSC-22R Antibody, TSC22 domain family, member 3 Antibody
Host	TSC22D3 antibody was produced in Mouse
Clonality:	Monoclonal
Isotype:	IgG1,k
Clone Name:	3A5
Immunogen Species:	TSC22D3 / GILZ antibody was raised against Human
Antigen Type:	Recombinant protein
Immunogen:	TSC22D3 / GILZ antibody was raised against tTSC22D3 (NP_932174, 1 a.a. ~ 98 a.a) partial recombinant protein with GST tag. MW of the GST tag alone is 26 KDa.
Reactivity:	Human
Purification:	Protein A purified
Presentation:	PBS, pH 7.2. Sourced in Ascites.
Recommended Storage:	Long term: -20°C; Short term: +4°C; Avoid freeze-thaw cycles.
Usage Summary:	Immunofluorescence (10 ug/ml) - positive control HeLa cells. Sandwich ELISA (Recombinant protein).
Uses:	IHC - Paraffin (5 µg/ml), Immunofluorescence (10 µg/ml), Western blot, ELISA (Optimal dilution to be determined by the researcher)
Size:	50 µg
Concentration:	0.5 mg/ml

Immunohistochemistry Image:



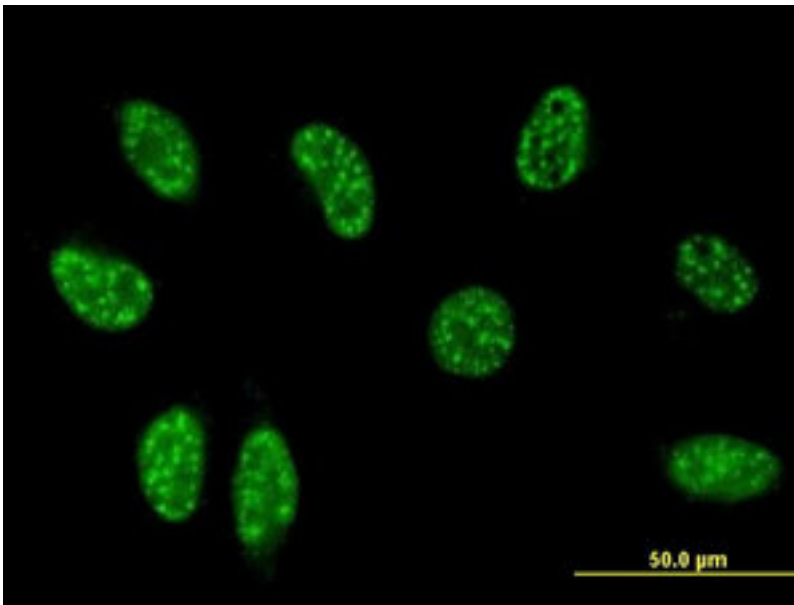
Anti-TSC22D3 antibody IHC of human breast. Immunohistochemistry of formalin-fixed, paraffin-embedded tissue after heat-induced antigen retrieval. Antibody LS-B4313 concentration 5 ug/ml.

Immunohistochemistry Image:



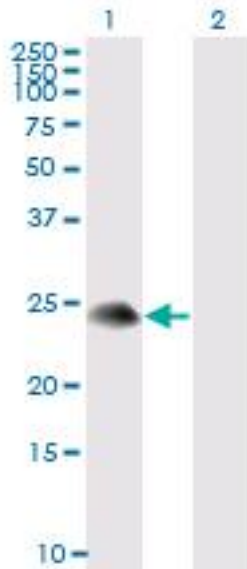
Anti-TSC22D3 antibody IHC of human tonsil. Immunohistochemistry of formalin-fixed, paraffin-embedded tissue after heat-induced antigen retrieval. Antibody LS-B4313 concentration 5 ug/ml.

Immunofluorescence Image:



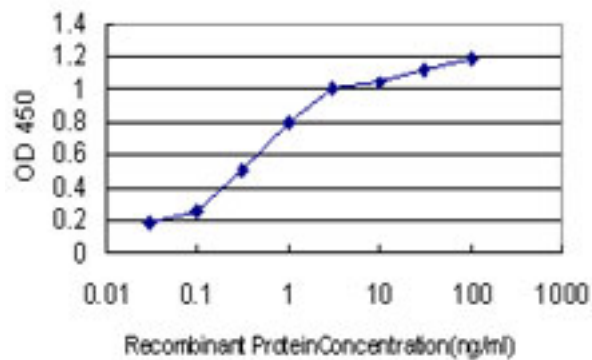
Immunofluorescence of monoclonal antibody to TSC22D3 on HeLa cell (antibody concentration 10 ug/ml).

Western Blot Image:



Western blot of TSC22D3 expression in transfected 293T cell line. Lane 1: Transfected Cell Lysate Lane 2: Non-transfected cell lysate.

ELISA Image:



Detection limit for recombinant GST tagged TSC22D3 is approximately 0.03 ng/ml as a capture antibody.

Requested From:

Japan

Laboratory Reagent For In Vitro Research Use Only

Not for resale without prior written consent from LifeSpan BioSciences, Inc.

Created on 9/23/2014

© 2014 LifeSpan BioSciences