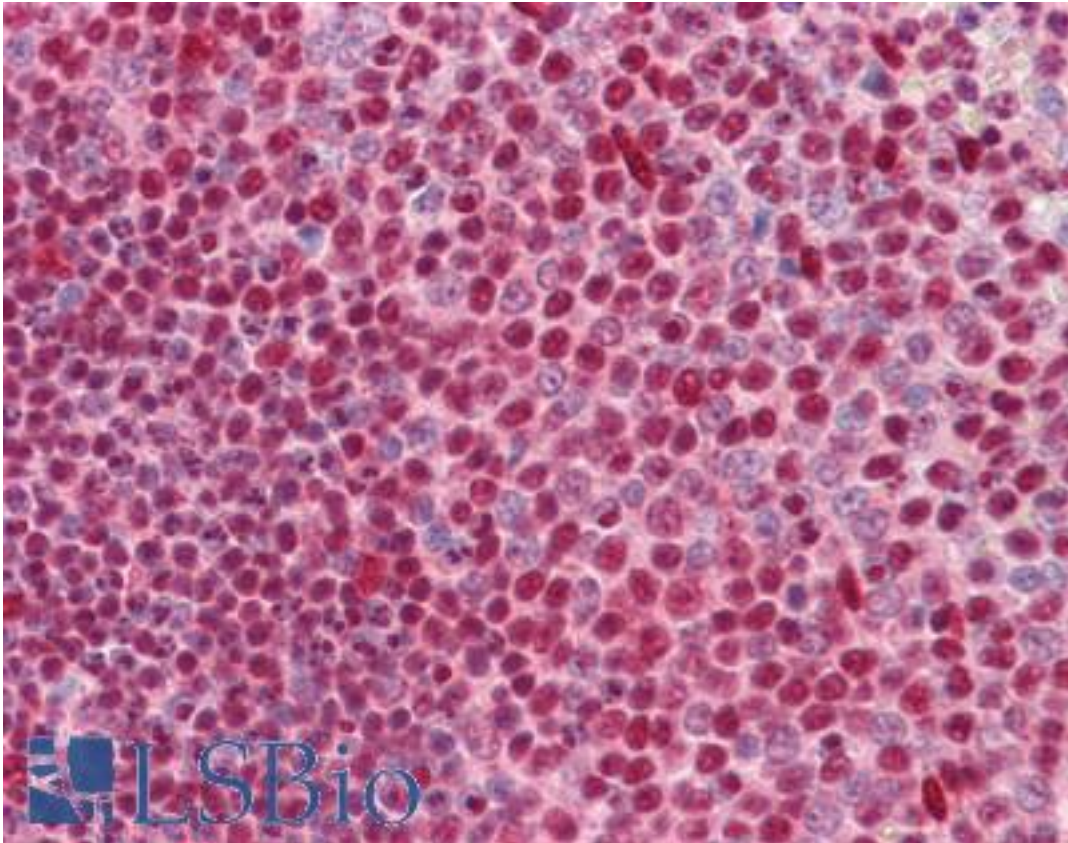


CUX1 / CASP Mouse anti-Human Monoclonal (2A10) Antibody - LS-B4309 - LSBio

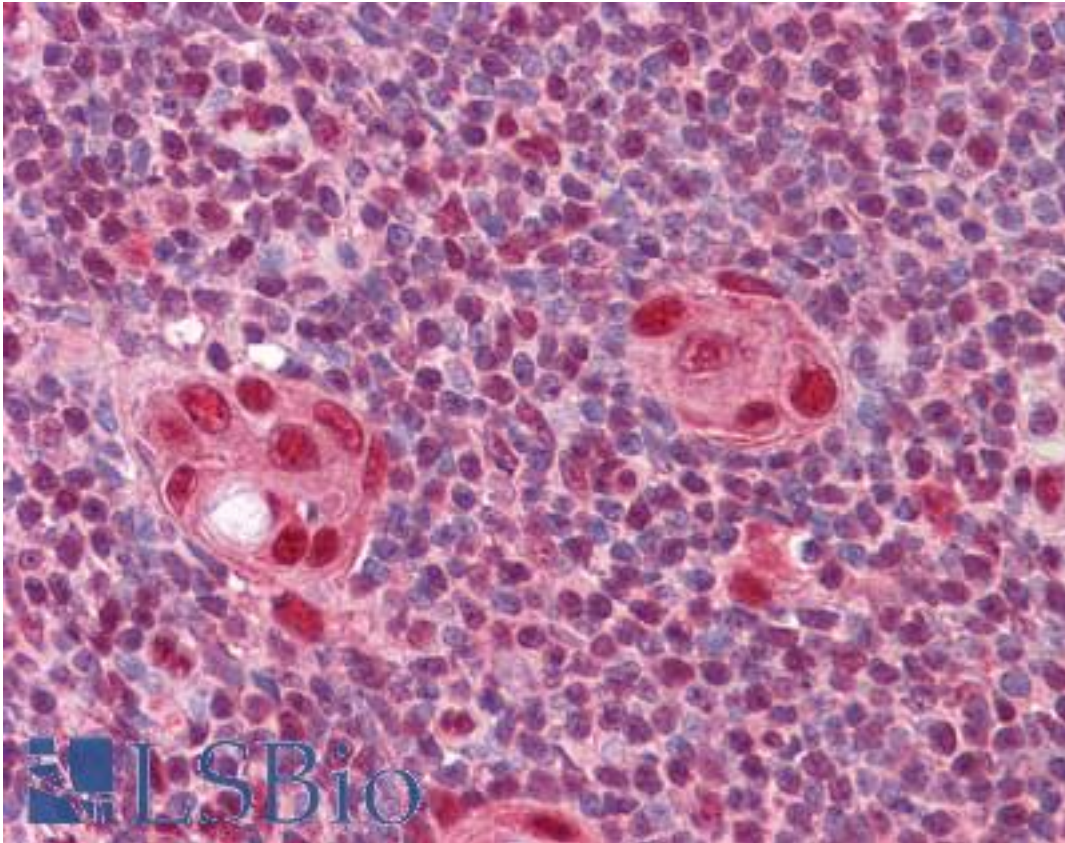
CatalogID:	LS-B4309
Validation:	This antibody replaces catalog number LS-C104930. It has been validated for use in the following assays: IHC-P.
Target:	cut-like homeobox 1 (CUX1)
Synonyms:	CUX1 Antibody, CASP Antibody, CDP1 Antibody, Clox Antibody, COY1 Antibody, CUTL1 Antibody, CCAAT displacement protein Antibody, Cut homolog Antibody, CUX Antibody, CUT Antibody, GOLIM6 Antibody, Homeobox protein cux-1 Antibody, p100 Antibody, p200 Antibody, p75 Antibody, Protein CASP Antibody, CDP Antibody, Cut-like homeobox 1 Antibody, Nbla10317 Antibody, p110 Antibody
Host	CUX1 antibody was produced in Mouse
Clonality:	Monoclonal
Isotype:	IgG1,k
Clone Name:	2A10
Immunogen Species:	CUX1 / CASP antibody was raised against Human
Antigen Type:	Recombinant protein
Immunogen:	CUX1 / CASP antibody was raised against cUTL1 (AAH25422, 521 a.a. ~ 621 a.a) partial recombinant protein with GST tag. MW of the GST tag alone is 26 KDa.
Reactivity:	Human
Purification:	Protein A purified
Presentation:	PBS, pH 7.2. Sourced in Ascites.
Recommended Storage:	Store at -20°C. Aliquot to avoid freeze/thaw cycles.
Usage Summary:	Immunofluorescence (10 ug/ml) - positive control HeLa cells. Sandwich ELISA (Recombinant protein).
Uses:	IHC - Paraffin (5 µg/ml), Immunofluorescence (10 µg/ml), Western blot, ELISA (Optimal dilution to be determined by the researcher)
Size:	50 µg
Concentration:	0.5 mg/ml

Immunohistochemistry Image:



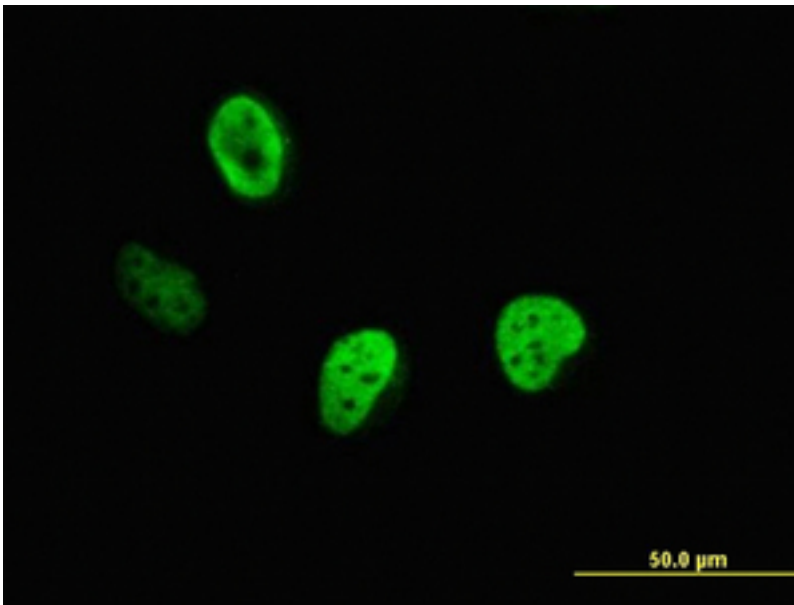
Anti-CUX1 / CUTL1 antibody IHC of human spleen. Immunohistochemistry of formalin-fixed, paraffin-embedded tissue after heat-induced antigen retrieval. Antibody LS-B4309 concentration 5 ug/ml.

Immunohistochemistry Image:



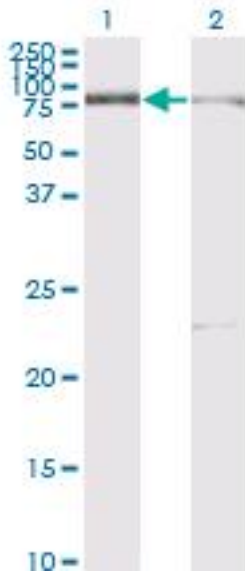
Anti-CUX1 / CUTL1 antibody IHC of human thymus. Immunohistochemistry of formalin-fixed, paraffin-embedded tissue after heat-induced antigen retrieval. Antibody LS-B4309 concentration 5 ug/ml.

Immunofluorescence Image:



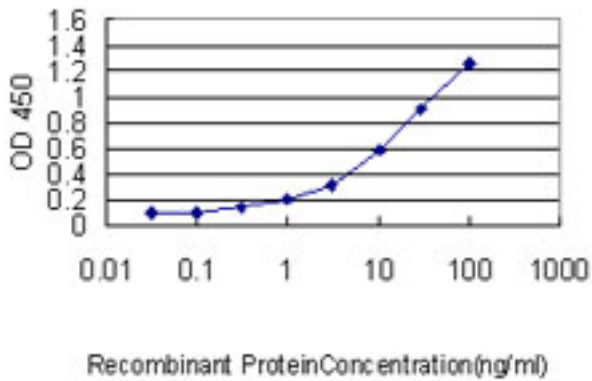
Immunofluorescence of monoclonal antibody to CUTL1 on HeLa cell (antibody concentration 10 ug/ml).

Western Blot Image:



Western blot of CUX1 expression in transfected 293T cell line by CUTL1 monoclonal antibody, clone 2A10. Lane 1: Transfected cell lysate Lane 2: Non-transfected lysate.

ELISA Image:



Detection limit for recombinant GST tagged CUTL1 is approximately 0.03 ng/ml as a capture antibody.

Requested From:

Japan

Laboratory Reagent For In Vitro Research Use Only

Not for resale without prior written consent from LifeSpan BioSciences, Inc.

Created on 9/23/2014

© 2014 LifeSpan BioSciences