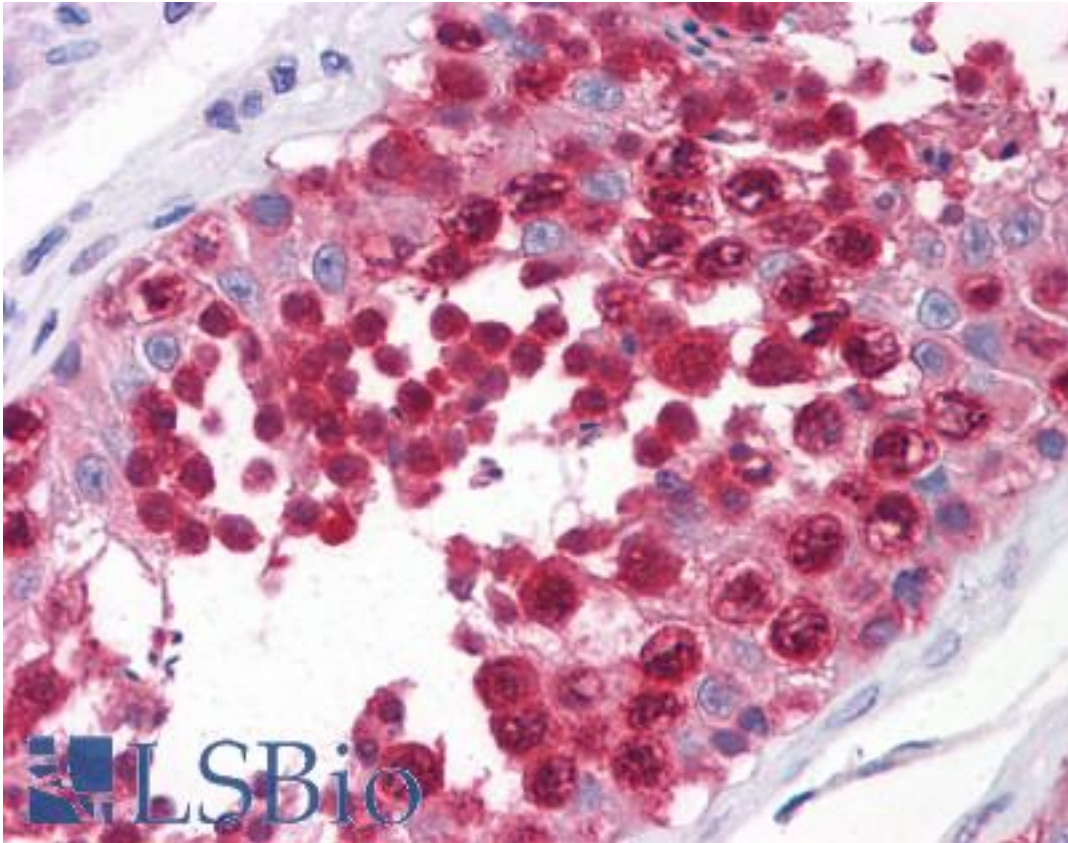


CSE1L Mouse anti-Human Monoclonal (3F8) Antibody - LS-B4307 - LSBio

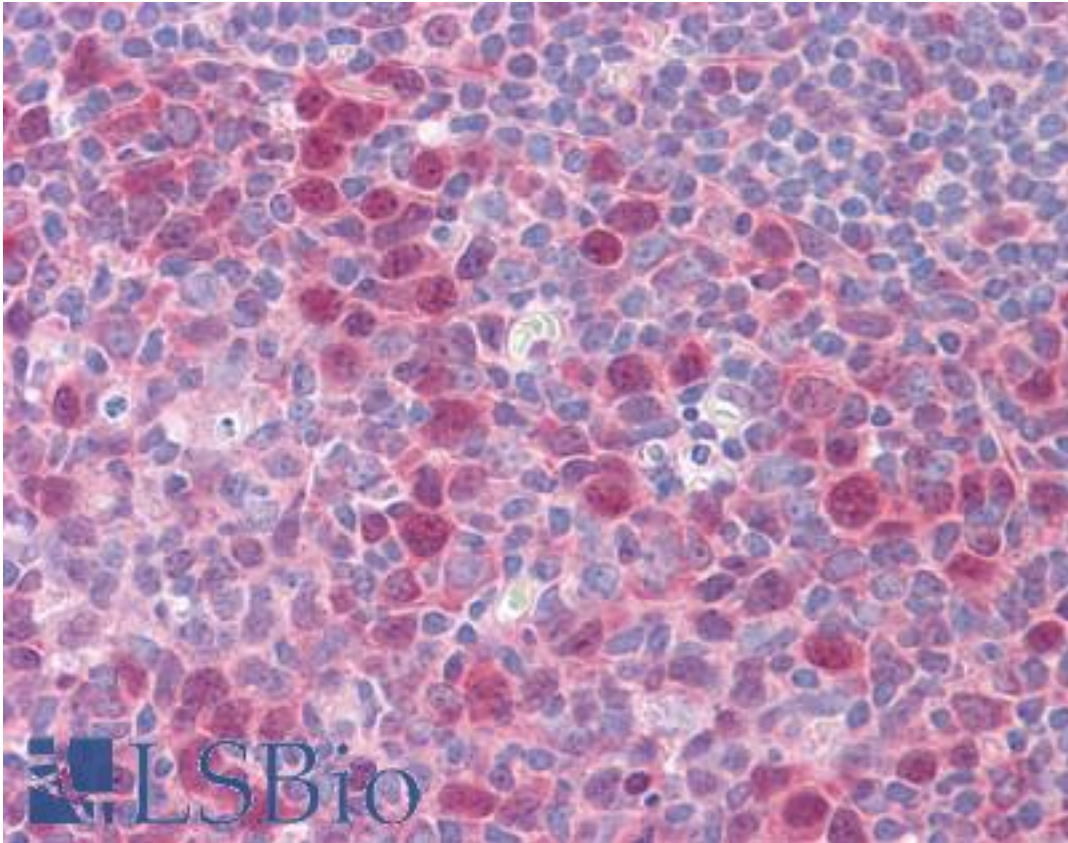
<b>CatalogID:</b>	LS-B4307
<b>Validation:</b>	This antibody replaces catalog number LS-C104927. It has been validated for use in the following assays: IHC-P.
<b>Target:</b>	CSE1 chromosome segregation 1-like (yeast) (CSE1L)
<b>Synonyms:</b>	CSE1L Antibody, CAS Antibody, CSE1 Antibody, Exp2 Antibody, Importin-alpha re-exporter Antibody, Exportin-2 Antibody, XPO2 Antibody
<b>Host</b>	CSE1L antibody was produced in Mouse
<b>Clonality:</b>	Monoclonal
<b>Isotype:</b>	IgG1,k
<b>Clone Name:</b>	3F8
<b>Immunogen Species:</b>	CSE1L antibody was raised against Human
<b>Antigen Type:</b>	Recombinant protein
<b>Immunogen:</b>	CSE1L antibody was raised against cSE1L (NP_001307, 872 a.a. ~ 972 a.a) partial recombinant protein with GST tag. MW of the GST tag alone is 26 KDa.
<b>Reactivity:</b>	Human
<b>Purification:</b>	Protein A purified
<b>Presentation:</b>	PBS, pH 7.2
<b>Recommended Storage:</b>	Store at -20°C. Aliquot to avoid freeze/thaw cycles.
<b>Usage Summary:</b>	Western Blot (Cell lysate) - positive control K-562. Immunofluorescence (10 ug/ml) - positive control HeLa cells. Sandwich ELISA (Recombinant protein).
<b>Uses:</b>	IHC - Paraffin (5 µg/ml), Immunofluorescence (10 µg/ml), Western blot, ELISA (Optimal dilution to be determined by the researcher)
<b>Size:</b>	50 µg
<b>Concentration:</b>	1 mg/ml

**Immunohistochemistry Image:**



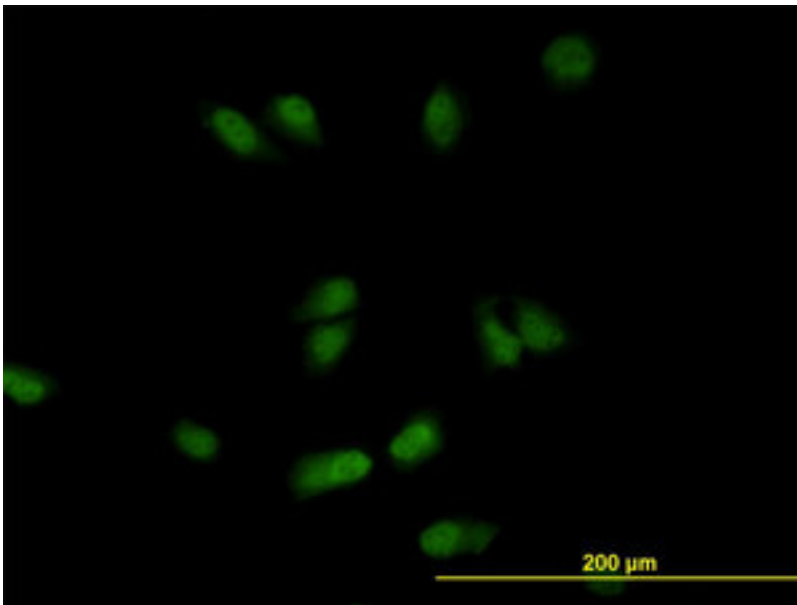
Anti-CSE1L antibody IHC of human testis. Immunohistochemistry of formalin-fixed, paraffin-embedded tissue after heat-induced antigen retrieval. Antibody LS-B4307 concentration 5 ug/ml.

**Immunohistochemistry Image:**



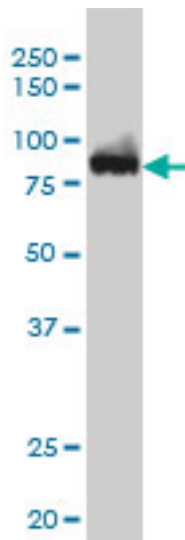
Anti-CSE1L antibody IHC of human tonsil. Immunohistochemistry of formalin-fixed, paraffin-embedded tissue after heat-induced antigen retrieval. Antibody LS-B4307 concentration 5 ug/ml.

**Immunofluorescence Image:**



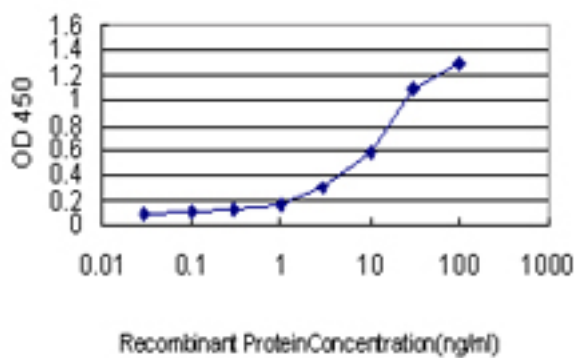
Immunofluorescence of monoclonal antibody to CSE1L on HeLa cell (antibody concentration 10 ug/ml).

**Western Blot Image:**



CSE1L monoclonal antibody, clone 3F8 Western blot of CSE1L expression in K-562.

**ELISA Image:**



Detection limit for recombinant GST tagged CSE1L is approximately 0.1 ng/ml as a capture antibody.

**Requested From:**

Japan

Laboratory Reagent For In Vitro Research Use Only

Not for resale without prior written consent from LifeSpan BioSciences, Inc.

Created on 9/23/2014

© 2014 LifeSpan BioSciences