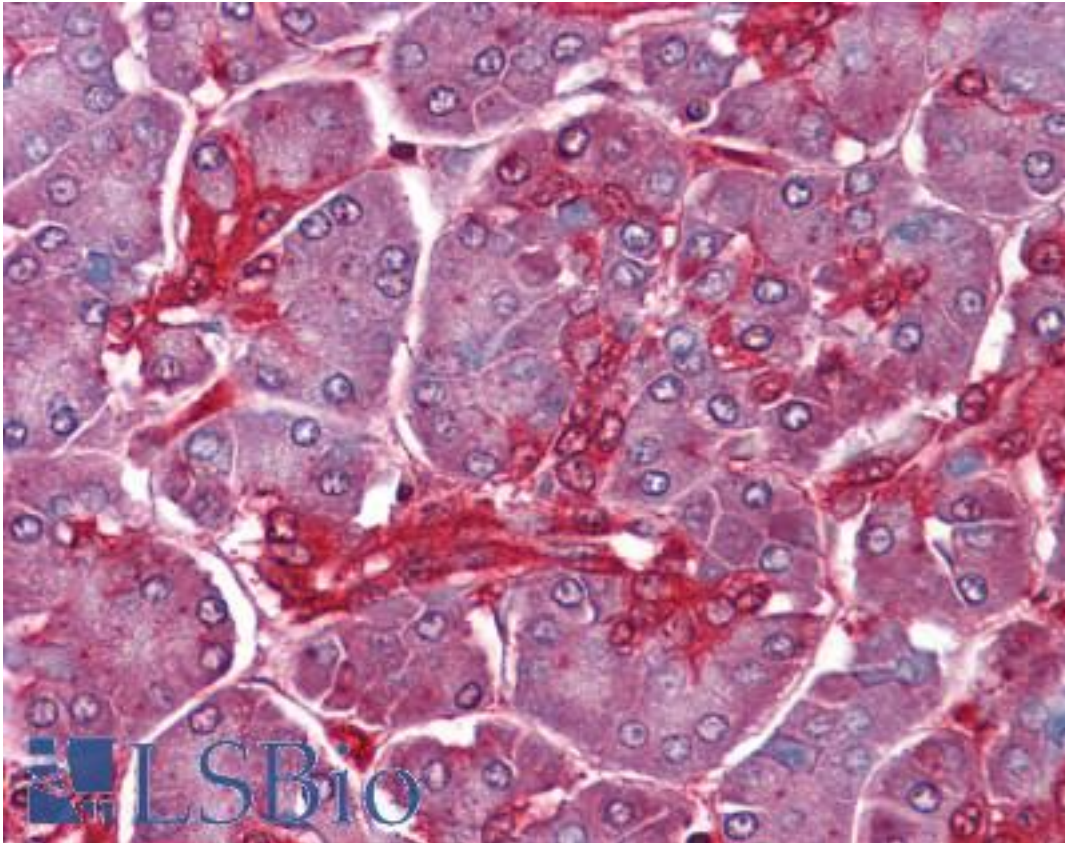


**CLIC1 / NCC27 Mouse anti-Human Monoclonal (2D4) Antibody - LS-B4302 - LSBio**

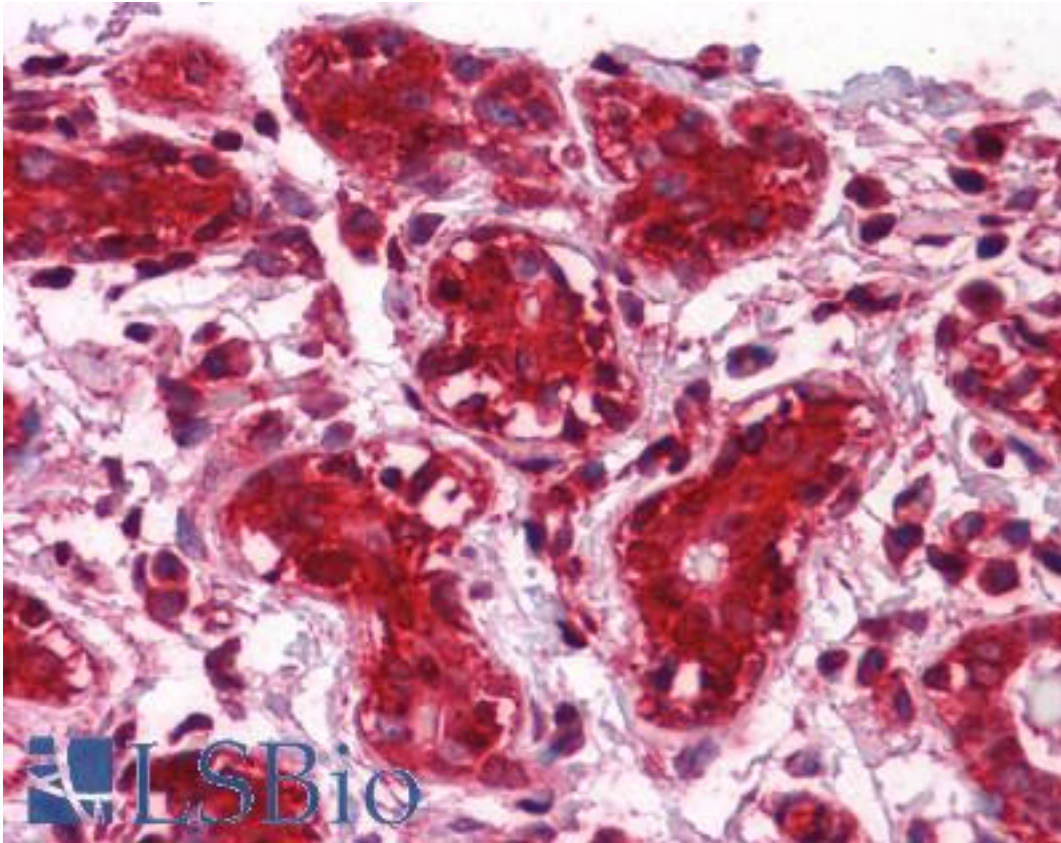
<b>CatalogID:</b>	LS-B4302
<b>Validation:</b>	This antibody replaces catalog number LS-C104919. It has been validated for use in the following assays: IHC-P.
<b>Target:</b>	chloride intracellular channel 1 (CLIC1)
<b>Synonyms:</b>	CLIC1 Antibody, Chloride channel ABP Antibody, G6 Antibody, Nuclear chloride channel-27 Antibody, p64CLCP Antibody, RNCC protein Antibody, HRNCC Antibody, NCC27 Antibody
<b>Family / Subfamily:</b>	Ion Channel / Chloride channel - intracellular
<b>Host</b>	CLIC1 antibody was produced in Mouse
<b>Clonality:</b>	Monoclonal
<b>Isotype:</b>	IgG1,k
<b>Clone Name:</b>	2D4
<b>Immunogen Species:</b>	CLIC1 / NCC27 antibody was raised against Human
<b>Antigen Type:</b>	Recombinant protein
<b>Immunogen:</b>	CLIC1 / NCC27 antibody was raised against cLIC1 (AAH64527, 1 a.a. ~ 242 a.a) full length recombinant protein with GST tag. MW of the GST tag alone is 26 KDa.
<b>Reactivity:</b>	Human
<b>Purification:</b>	Protein A purified
<b>Presentation:</b>	PBS, pH 7.2
<b>Recommended Storage:</b>	Store at -20°C. Aliquot to avoid freeze/thaw cycles.
<b>Usage Summary:</b>	
<b>Uses:</b>	IHC - Paraffin (5 µg/ml), Western blot, ELISA (Optimal dilution to be determined by the researcher)
<b>Size:</b>	50 µg

**Immunohistochemistry Image:**



Anti-CLIC1 antibody IHC of human pancreas. Immunohistochemistry of formalin-fixed, paraffin-embedded tissue after heat-induced antigen retrieval. Antibody LS-B4302 concentration 5 ug/ml.

**Immunohistochemistry Image:**



Anti-CLIC1 antibody IHC of human breast. Immunohistochemistry of formalin-fixed, paraffin-embedded tissue after heat-induced antigen retrieval. Antibody LS-B4302 concentration 5 ug/ml.

**Requested From:**

Japan

Laboratory Reagent For In Vitro Research Use Only

Not for resale without prior written consent from LifeSpan BioSciences, Inc.

Created on 9/23/2014

© 2014 LifeSpan BioSciences