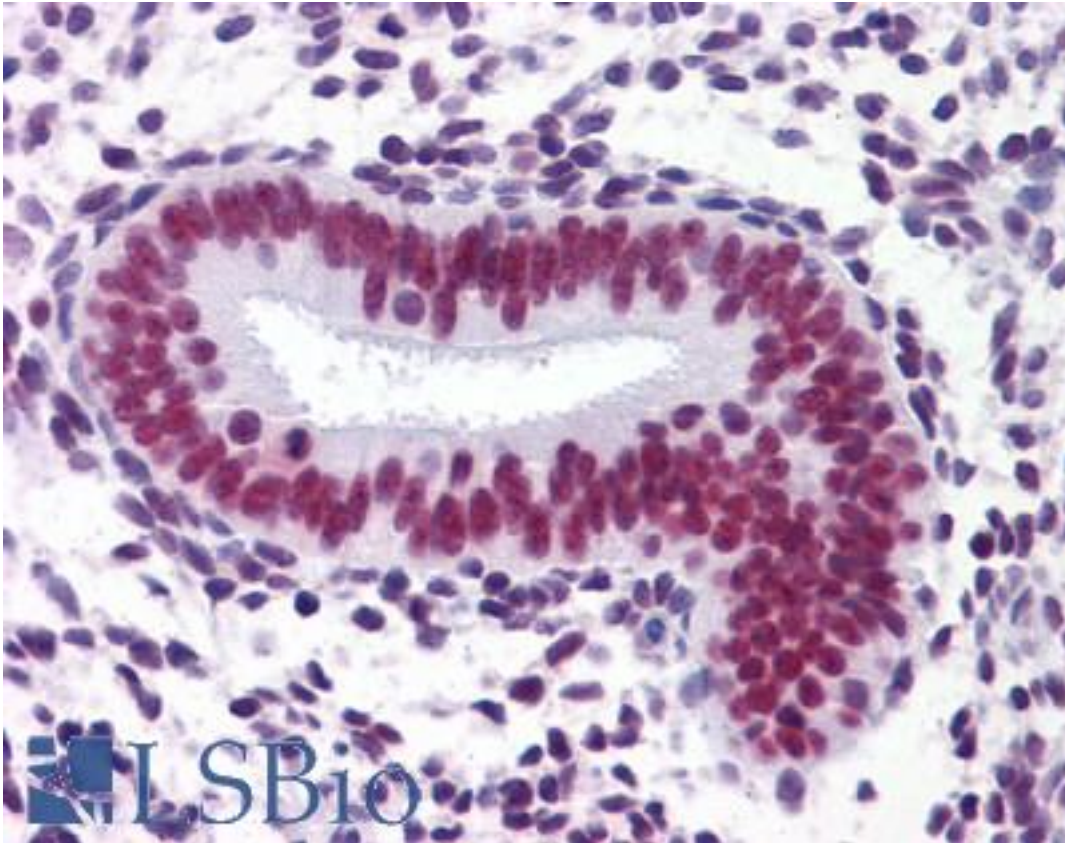


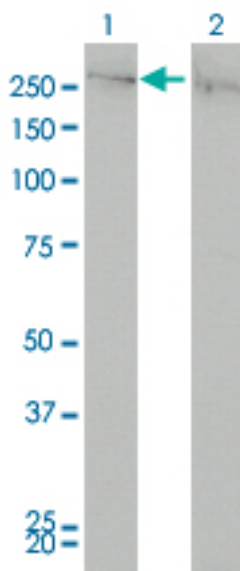
CHD4 Mouse anti-Human Monoclonal (4H4) Antibody - LS-B4300 - LSBio	
CatalogID:	LS-B4300
Validation:	This antibody replaces catalog number LS-C104917. It has been validated for use in the following assays: IHC-P.
Target:	chromodomain helicase DNA binding protein 4 (CHD4)
Synonyms:	CHD4 Antibody, ATP-dependent helicase CHD4 Antibody, CHD-4 Antibody, Mi-2b Antibody, Mi2-BETA Antibody
Host	CHD4 antibody was produced in Mouse
Clonality:	Monoclonal
Isotype:	IgG2a,k
Clone Name:	4H4
Immunogen Species:	CHD4 antibody was raised against Human
Antigen Type:	Recombinant protein
Immunogen:	CHD4 antibody was raised against cHD4 (NP_001264, 1632 a.a. ~ 1731 a.a) partial recombinant protein with GST tag. MW of the GST tag alone is 26 KDa.
Reactivity:	Human
Purification:	Protein A purified
Presentation:	PBS, pH 7.2
Recommended Storage:	Store at -20°C. Aliquot to avoid freeze/thaw cycles.
Usage Summary:	Western Blot (Cell lysate) - positive control HeLa NE. Western Blot (Transfected lysate) - positive control transfected 293T cell line. Sandwich ELISA (Recombinant protein).
Uses:	IHC - Paraffin (10 µg/ml), Western blot, ELISA (Optimal dilution to be determined by the researcher)
Size:	50 µg

Immunohistochemistry Image:



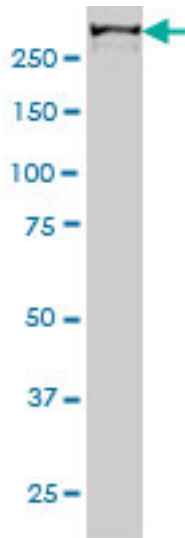
Anti-CHD4 antibody IHC of human uterus. Immunohistochemistry of formalin-fixed, paraffin-embedded tissue after heat-induced antigen retrieval. Antibody LS-B4300 concentration 10 ug/ml.

Western Blot Image:



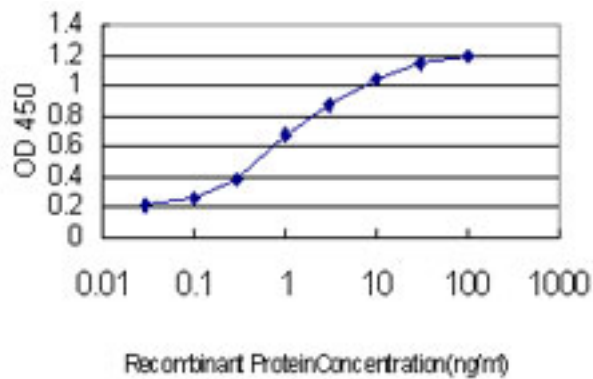
Western blot of CHD4 expression in transfected 293T cell line by CHD4 monoclonal antibody, clone 4H4.

Western Blot Image:



CHD4 monoclonal antibody, clone 4H4 Western blot of CHD4 expression in HeLa NE.

ELISA Image:



Detection limit for recombinant GST tagged CHD4 is approximately 0.03 ng/ml as a capture antibody.

Requested From:

Japan

Laboratory Reagent For In Vitro Research Use Only

Not for resale without prior written consent from LifeSpan BioSciences, Inc.

Created on 9/23/2014

© 2014 LifeSpan BioSciences