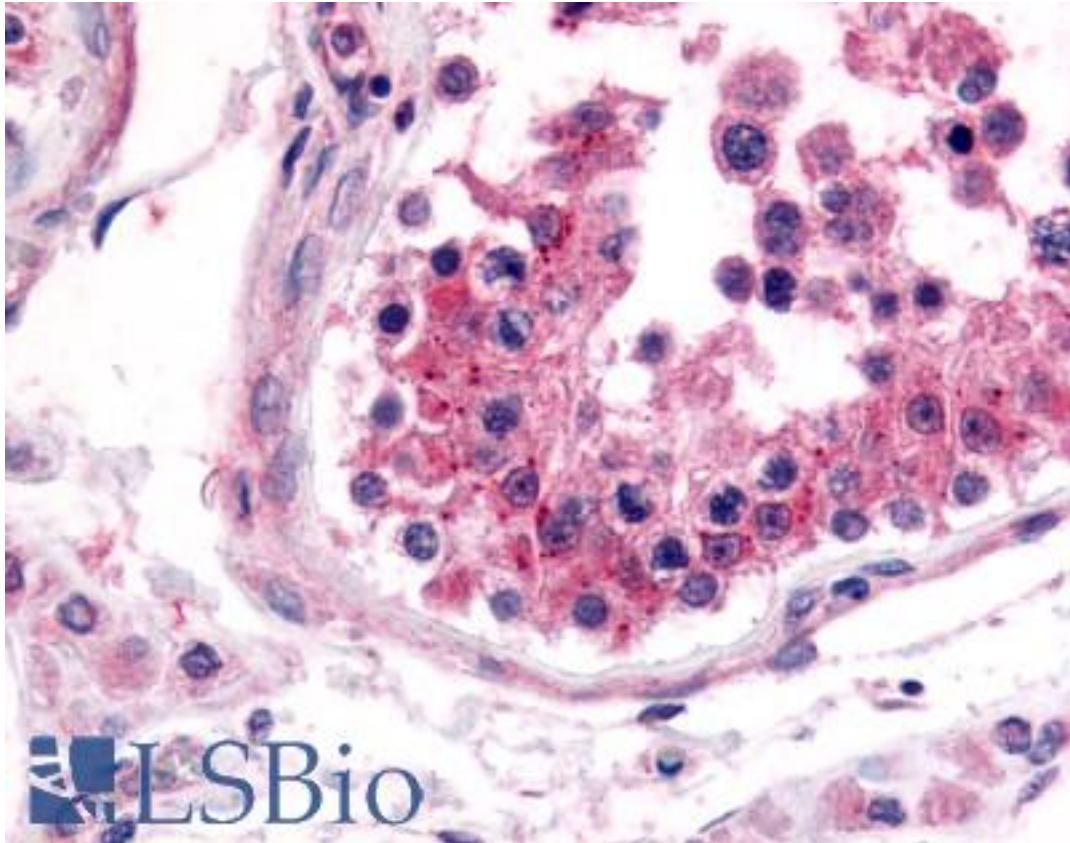


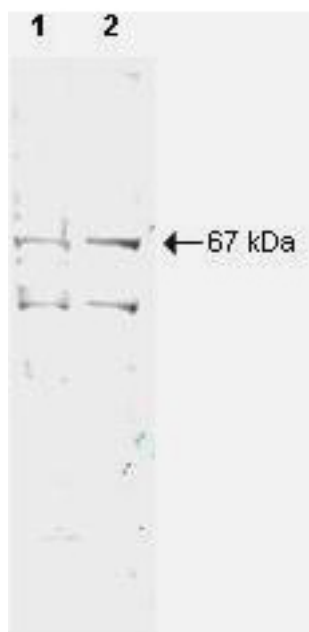
NRF1 / NRF-1 Rabbit anti-Mouse Polyclonal (aa1-534) Antibody - LS-B43 - LSBio	
<b>CatalogID:</b>	LS-B43
<b>Validation:</b>	This antibody replaces catalog number LS-C18854. It has been validated for use in the following assays: IHC.
<b>Target:</b>	nuclear respiratory factor 1 (NRF1)
<b>Synonyms:</b>	NRF1 Antibody, EWG Antibody, NRF-1 Antibody, Nuclear respiratory factor 1 Antibody, ALPHA-PAL Antibody
<b>Family / Subfamily:</b>	Transcription factor / not assigned-Transcription factor
<b>Host</b>	NRF1 antibody was produced in Rabbit
<b>Clonality:</b>	Polyclonal
<b>Immunogen Species:</b>	NRF1 / NRF-1 antibody was raised against Mouse
<b>Immunogen:</b>	NRF1 / NRF-1 antibody was raised against recombinant mouse NRF1.
<b>Specificity:</b>	Purified recombinant mouse NRF1 protein corresponding to aa 1-534 of the native protein.
<b>Epitope:</b>	aa1-534
<b>Reactivity:</b>	Mouse, Human
<b>Purification:</b>	Protein A purified
<b>Presentation:</b>	0.02 M potassium phosphate, 0.15 M sodium chloride, pH 7.2, 0.01% sodium azide.
<b>Recommended Storage:</b>	Long term: -20°C; Short term: +4°C; Avoid freeze-thaw cycles.
<b>Usage Summary:</b>	Immunohistochemistry: LS-B43 was validated for use in immunohistochemistry on a panel of 21 formalin-fixed, paraffin-embedded (FFPE) human tissues after heat induced antigen retrieval in pH 6.0 citrate buffer. After incubation with the primary antibody, slides were incubated with biotinylated secondary antibody, followed by alkaline phosphatase-streptavidin and chromogen. The stained slides were evaluated by a pathologist to confirm staining specificity. The optimal working concentration for LS-B43 was determined to be 2-5 ug/ml.
<b>Uses:</b>	IHC - Paraffin (2 - 5 µg/ml), Western blot (1:500 - 1:2000), ELISA (1:3000 - 1:10000) (Optimal dilution to be determined by the researcher)
<b>Size:</b>	50 µg
<b>Concentration:</b>	1 mg/ml

**Immunohistochemistry Image:**



Anti-NRF1 antibody IHC of human testis. Immunohistochemistry of formalin-fixed, paraffin-embedded tissue after heat-induced antigen retrieval. Antibody LS-B43 concentration 5 ug/ml.

**Western Blot Image:**



Anti-NRF1 Antibody - Western Blot. Western blot of Protein A Purified anti-NRF1 antibody shows detection of a 67-kD band corresponding to human NRF1 in a (lane 1) HeLa nuclear extract and (lane 2) whole cell lysate (molecular weight marker not shown). Approx. 10 ug of each lysate was separated by SDS-PAGE and transferred onto nitrocellulose. The blot was incubated with a 1:500 dilution of the antibody at room temperature for 1 h followed by detection using IRDye700 labeled Goat-a-Rabbit IgG [H&L] ( diluted 1:2500. IRDye700 fluorescence image was captured using the Odyssey Infrared Imaging System developed by LI-COR. IRDye is a trademark of LI-COR, Inc. Other detection systems will yield similar results.

**Requested From:**

Japan

Laboratory Reagent For In Vitro Research Use Only

Not for resale without prior written consent from LifeSpan BioSciences, Inc.

Created on 9/23/2014

© 2014 LifeSpan BioSciences