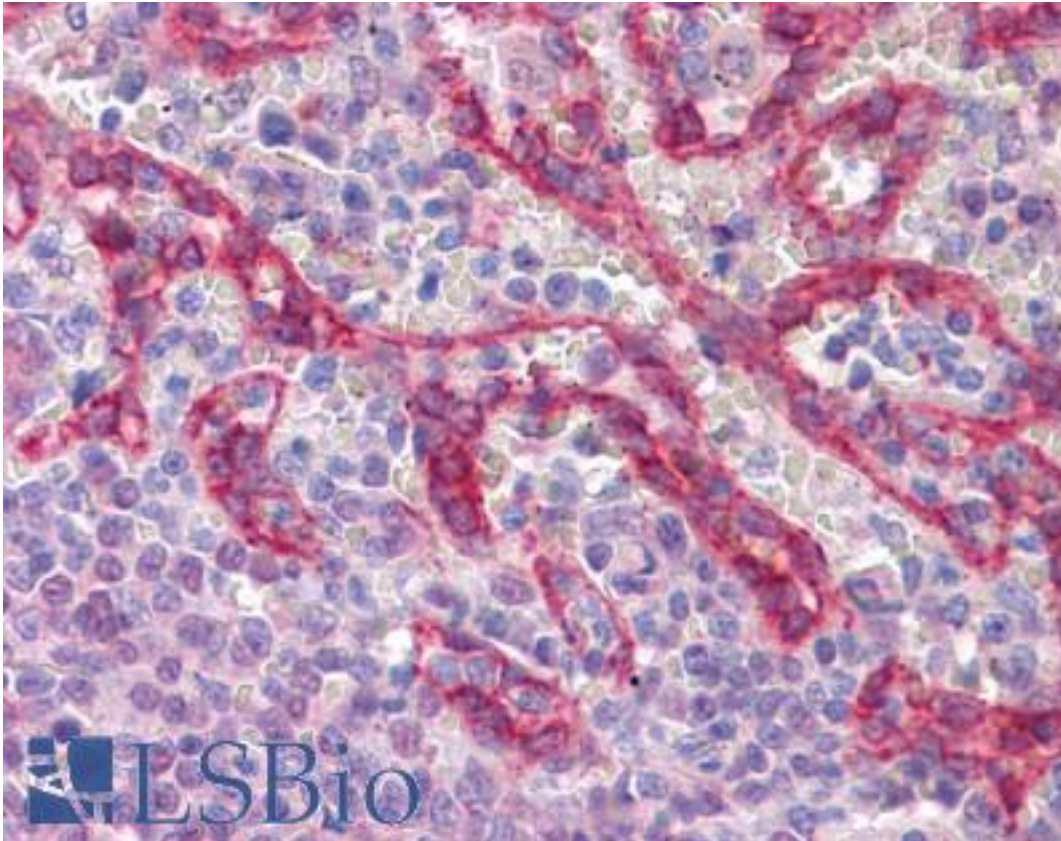


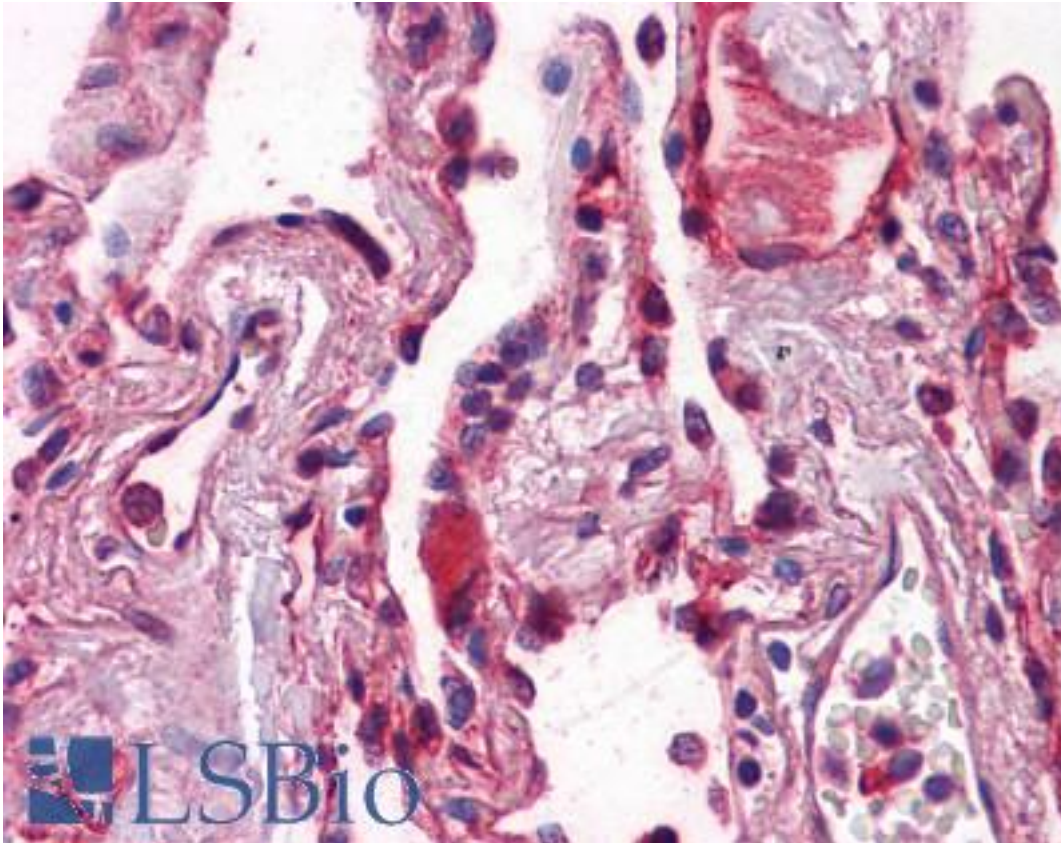
CDH1 / E Cadherin Mouse anti-Human Monoclonal (3F4) Antibody - LS-B4297 - LSBio	
CatalogID:	LS-B4297
Validation:	This antibody replaces catalog number LS-C104894. It has been validated for use in the following assays: IHC-P.
Target:	cadherin 1, type 1, E-cadherin (epithelial) (CDH1)
Synonyms:	CDH1 Antibody, CD324 Antibody, CDHE Antibody, Cell-CAM 120/80 Antibody, E Cadherin Antibody, E-Cadherin Antibody, ECAD Antibody, Epithelial cadherin Antibody, Arc-1 Antibody, UVO Antibody, Cadherin-1 Antibody, CAM 120/80 Antibody, CD324 antigen Antibody, LCAM Antibody, Uvomorulin Antibody
Family / Subfamily:	Cadherin / not assigned-Cadherin
Host	CDH1 antibody was produced in Mouse
Clonality:	Monoclonal
Isotype:	IgG1,k
Clone Name:	3F4
Immunogen Species:	CDH1 / E Cadherin antibody was raised against Human
Antigen Type:	Recombinant protein
Immunogen:	CDH1 / E Cadherin antibody was raised against cDH1 (NP_004351, 381 a.a. ~ 481 a.a) partial recombinant protein with GST tag. MW of the GST tag alone is 26 KDa.
Reactivity:	Human
Purification:	Protein A purified
Presentation:	PBS, pH 7.4.
Recommended Storage:	Store at -20°C. Aliquot to avoid freeze/thaw cycles.
Usage Summary:	Western Blot (Transfected lysate) - positive control transfected 293T cell line. In situ Proximity Ligation Assay (Cell).
Uses:	IHC - Paraffin (3 µg/ml), Western blot, ELISA, Proximity Ligation Assay (Optimal dilution to be determined by the researcher)
Size:	50 µg
Concentration:	0.4 mg/ml

Immunohistochemistry Image:



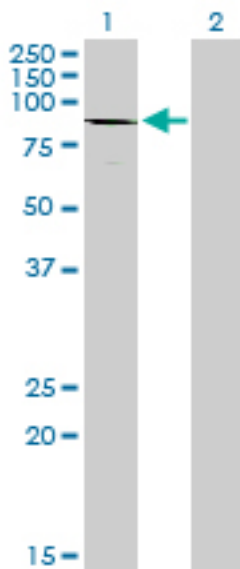
Anti-E Cadherin antibody IHC of human, spleen. Immunohistochemistry of formalin-fixed, paraffin-embedded tissue after heat-induced antigen retrieval. Antibody LS-B4297 concentration 3 ug/ml.

Immunohistochemistry Image:



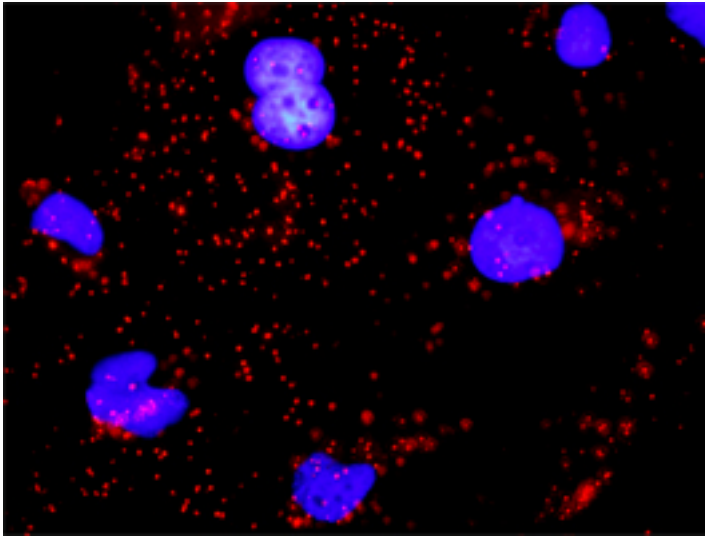
Anti-E Cadherin antibody IHC of human lung. Immunohistochemistry of formalin-fixed, paraffin-embedded tissue after heat-induced antigen retrieval. Antibody LS-B4297 concentration 3 ug/ml.

Western Blot Image:



Western blot of CDH1 expression in transfected 293T cell line by CDH1 monoclonal antibody, clone 3F4.

Proximity Ligation Analysis Image:



Proximity Ligation Analysis (PLA) of protein-protein interactions between EGFR and CDH1. HeLa cells were stained with anti-EGFR rabbit purified polyclonal 1:1200 and anti-CDH1 mouse monoclonal antibody 1:50. Signals were detected by Duolink 30 Detection Ki.

Requested From:

Japan

Laboratory Reagent For In Vitro Research Use Only

Not for resale without prior written consent from LifeSpan BioSciences, Inc.

Created on 9/23/2014

© 2014 LifeSpan BioSciences