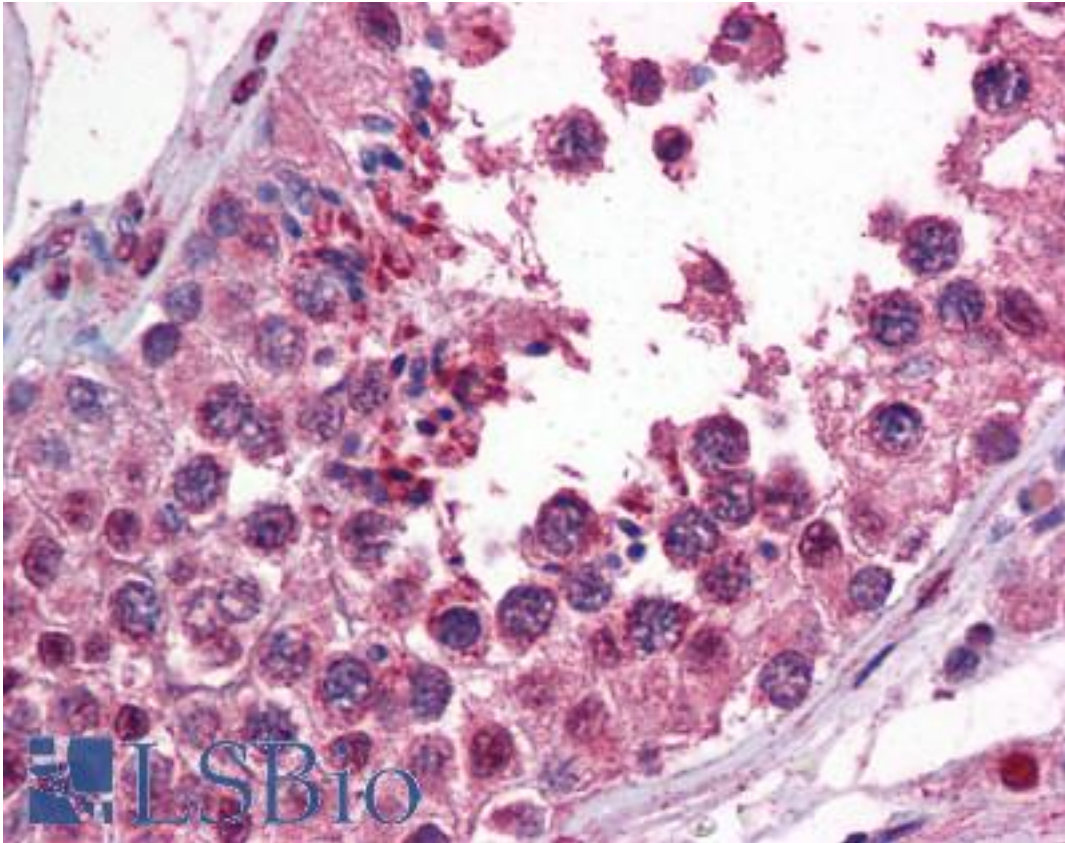


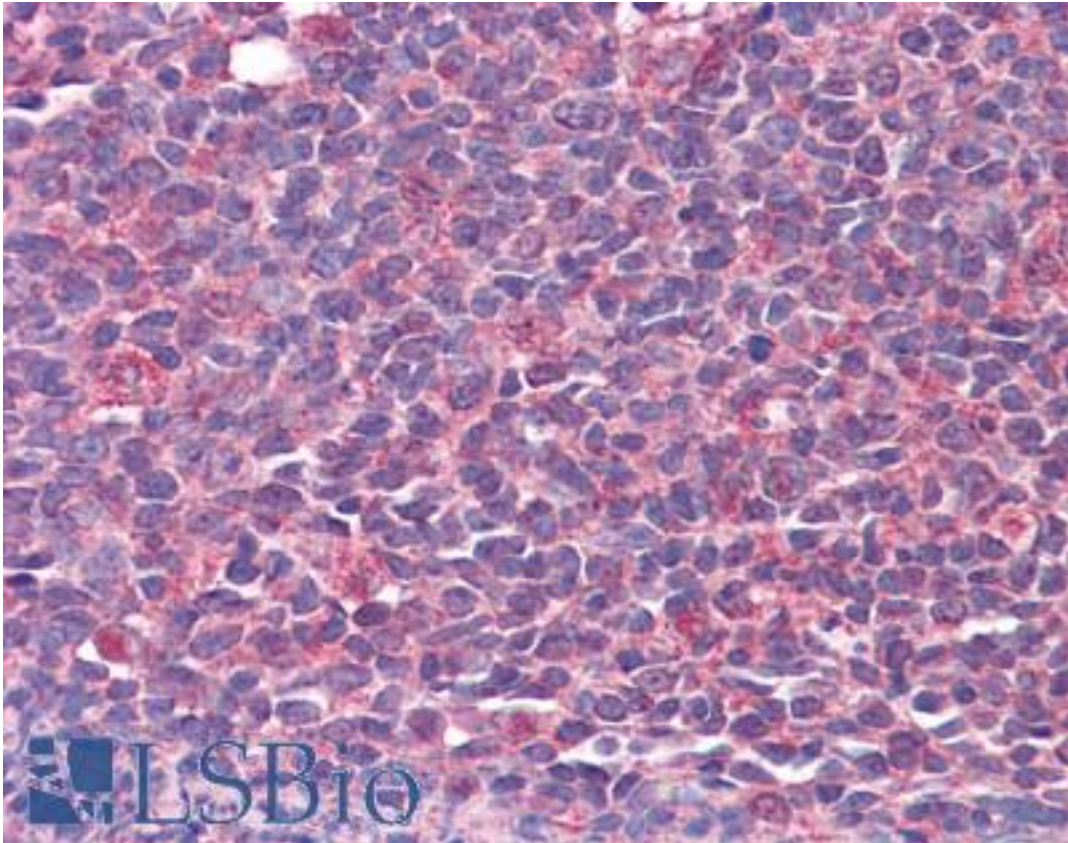
| CAMK2B / CaMKII Beta Mouse anti-Human Monoclonal (S11) Antibody - LS-B4292 - LSBio | |
|--|--|
| CatalogID: | LS-B4292 |
| Validation: | This antibody replaces catalog number LS-C104874. It has been validated for use in the following assays: IHC-P. |
| Target: | calcium/calmodulin-dependent protein kinase II beta (CAMK2B) |
| Synonyms: | CAMK2B Antibody, Beta-subunit of CaMK II Antibody, Cam kinase II beta Antibody, CaMK IIbeta Antibody, CaM-kinase II beta chain Antibody, CAMKB Antibody, Beta CaMK II Antibody, CaM kinase II beta subunit Antibody, CaM kinase II subunit beta Antibody, CaM kinase IIbeta Antibody, CAM2 Antibody, Camk ii beta Antibody, CAMK2 Antibody, CaMKII beta Antibody, CaMK-II subunit beta Antibody, CaMKIIbeta Antibody |
| Family / Subfamily: | Protein Kinase / CAMK2 |
| Host | CAMK2B antibody was produced in Mouse |
| Clonality: | Monoclonal |
| Isotype: | IgG1,k |
| Clone Name: | S11 |
| Immunogen Species: | CAMK2B / CaMKII Beta antibody was raised against Human |
| Antigen Type: | Recombinant protein |
| Immunogen: | CAMK2B / CaMKII Beta antibody was raised against cAMK2B (AAH19070, 1 a.a. ~ 504 a.a) full length recombinant protein with GST tag. MW of the GST tag alone is 26 KDa. |
| Reactivity: | Human |
| Purification: | Protein A purified |
| Presentation: | PBS, pH 7.2 |
| Recommended Storage: | Store at -20°C. Aliquot to avoid freeze/thaw cycles. |
| Usage Summary: | Western Blot (Cell lysate) - positive control HeLa NE. Sandwich ELISA (Recombinant protein). |
| Uses: | IHC - Paraffin (5 µg/ml), Western blot, ELISA (Optimal dilution to be determined by the researcher) |
| Size: | 50 µg |

Immunohistochemistry Image:



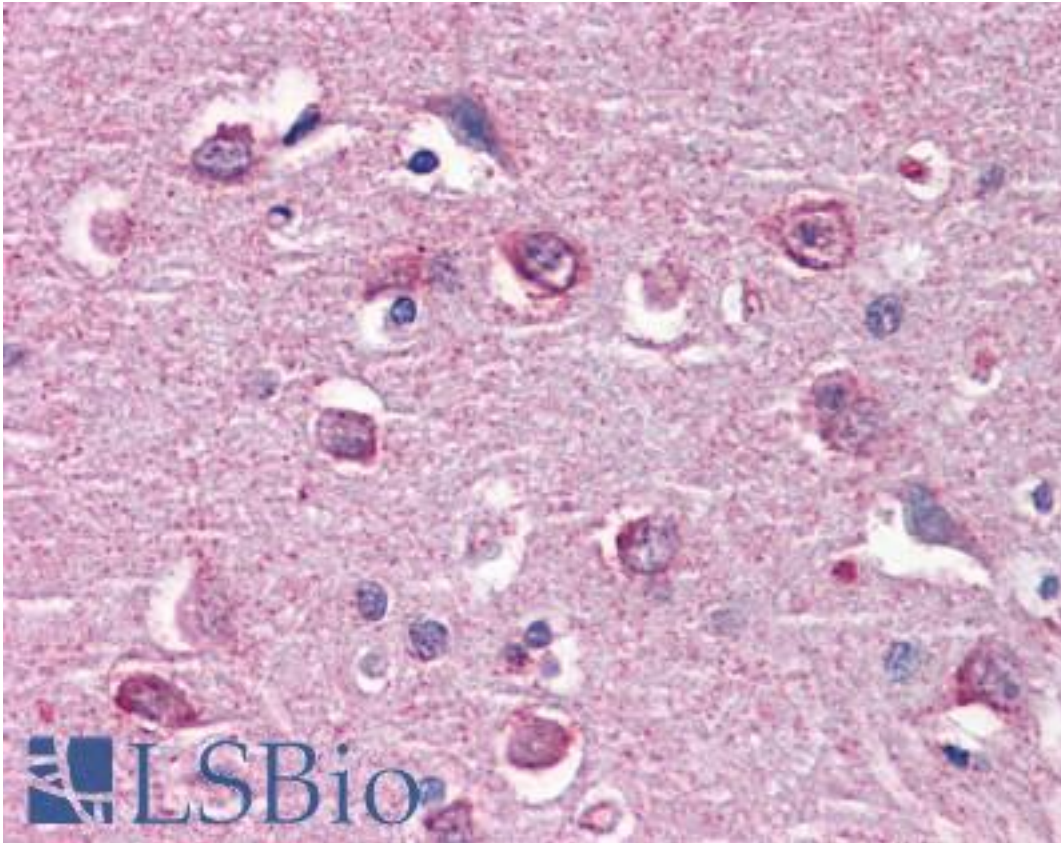
Anti-CAMK2B antibody IHC of human testis. Immunohistochemistry of formalin-fixed, paraffin-embedded tissue after heat-induced antigen retrieval. Antibody LS-B4292 concentration 5 ug/ml.

Immunohistochemistry Image:



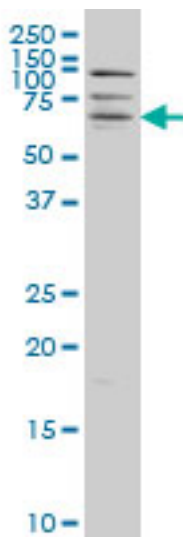
Anti-CAMK2B antibody IHC of human tonsil. Immunohistochemistry of formalin-fixed, paraffin-embedded tissue after heat-induced antigen retrieval. Antibody LS-B4292 concentration 5 ug/ml.

Immunohistochemistry Image:



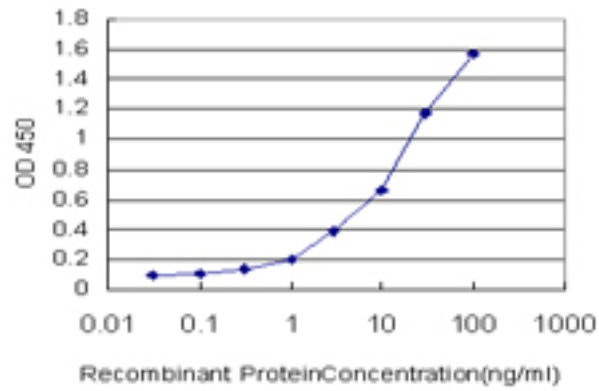
Anti-CAMK2B antibody IHC of human brain, cortex. Immunohistochemistry of formalin-fixed, paraffin-embedded tissue after heat-induced antigen retrieval. Antibody LS-B4292 concentration 5 ug/ml.

Western Blot Image:



CAMK2B monoclonal antibody, clone S11 Western blot of CAMK2B expression in HeLa NE.

ELISA Image:



Detection limit for recombinant GST tagged CAMK2B is approximately 0.3 ng/ml as a capture antibody.

Requested From:

Japan

Laboratory Reagent For In Vitro Research Use Only

Not for resale without prior written consent from LifeSpan BioSciences, Inc.

Created on 9/23/2014

© 2014 LifeSpan BioSciences