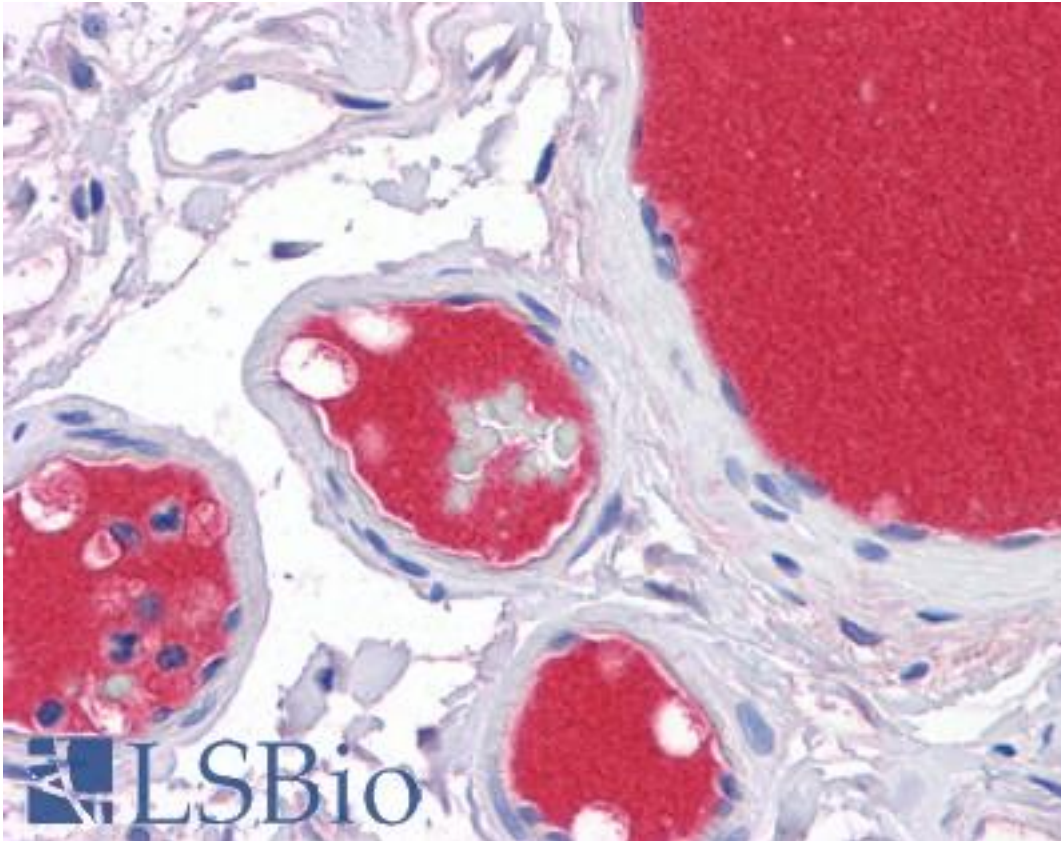


Complement C3 Mouse anti-Human Monoclonal (5F9) Antibody - LS-B4290 - LSBio

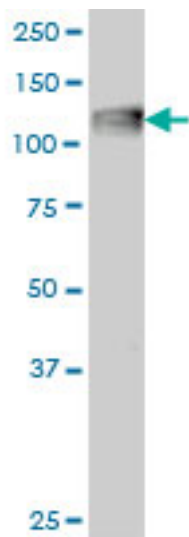
CatalogID:	LS-B4290
Validation:	This antibody replaces catalog number LS-C104871. It has been validated for use in the following assays: IHC-P.
Target:	complement component 3 (C3)
Synonyms:	C3 Antibody, AHUS5 Antibody, ARMD9 Antibody, Complement component C3 Antibody, CPAMD1 Antibody, Complement C3 Antibody, ASP Antibody, Complement component 3 Antibody
Host	C3 antibody was produced in Mouse
Clonality:	Monoclonal
Isotype:	IgG2a,k
Clone Name:	5F9
Immunogen Species:	Complement C3 antibody was raised against Human
Antigen Type:	Recombinant protein
Immunogen:	Complement C3 antibody was raised against c3 (NP_000055, 1534 a.a. ~ 1645 a.a) partial recombinant protein with GST tag. MW of the GST tag alone is 26 KDa.
Reactivity:	Human
Purification:	Protein A purified
Presentation:	PBS, pH 7.2
Recommended Storage:	Store at -20°C. Aliquot to avoid freeze/thaw cycles.
Usage Summary:	Western Blot (Cell lysate) - positive control A-431. Sandwich ELISA (Recombinant protein).
Uses:	IHC - Paraffin (5 µg/ml), Western blot, ELISA (Optimal dilution to be determined by the researcher)
Size:	50 µg
Concentration:	0.32 mg/ml

Immunohistochemistry Image:



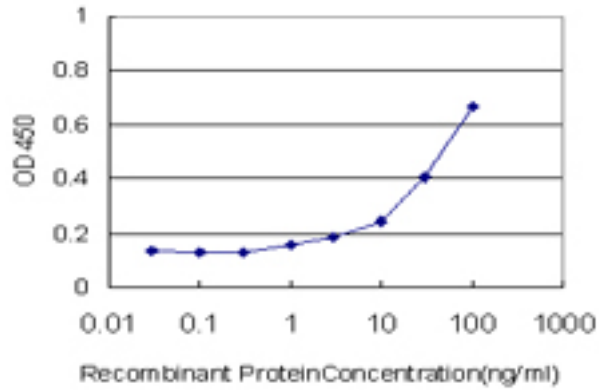
Anti-Complement C3 antibody IHC of human vessels. Immunohistochemistry of formalin-fixed, paraffin-embedded tissue after heat-induced antigen retrieval. Antibody LS-B4290 concentration 5 ug/ml.

Western Blot Image:



C3 monoclonal antibody, clone 5F9 Western blot of C3 expression in A-431.

ELISA Image:



Detection limit for recombinant GST tagged C3 is approximately 1 ng/ml as a capture antibody.

Requested From:

Japan

Laboratory Reagent For In Vitro Research Use Only

Not for resale without prior written consent from LifeSpan BioSciences, Inc.

Created on 9/23/2014

© 2014 LifeSpan BioSciences