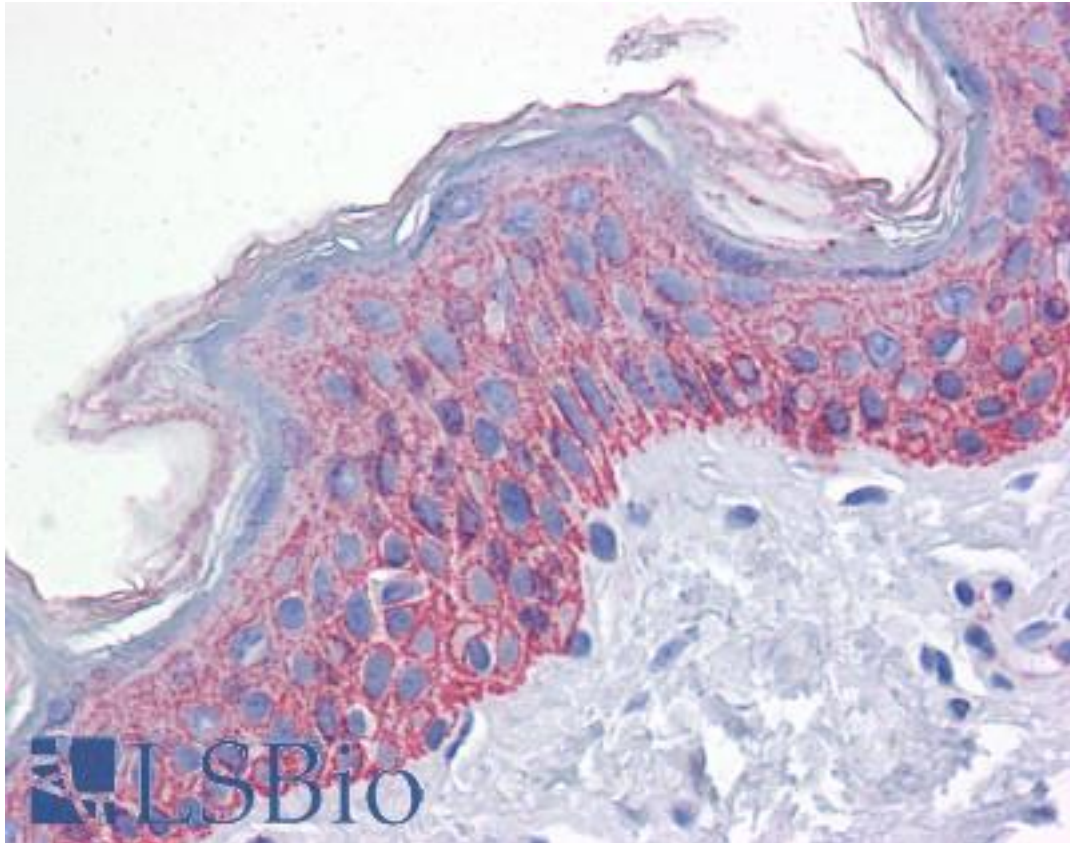


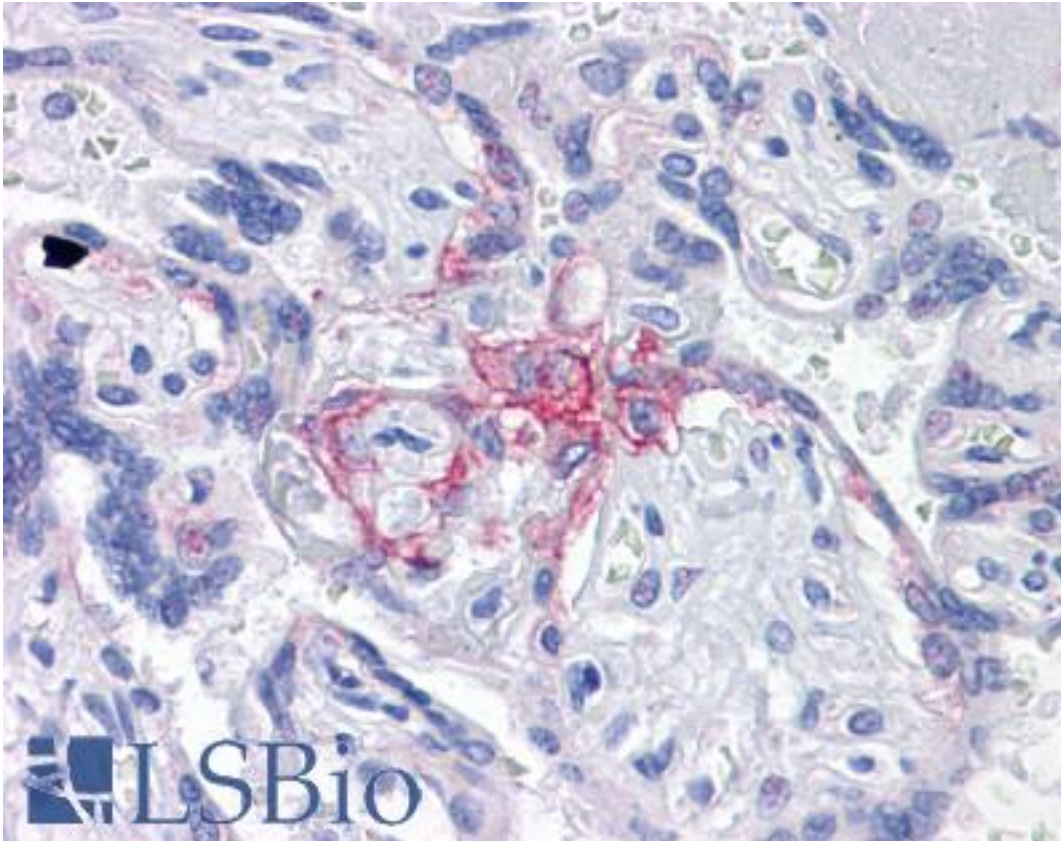
BUB1B / BubR1 Mouse anti-Human Monoclonal (2G5) Antibody - LS-B4289 - LSBio	
CatalogID:	LS-B4289
Validation:	This antibody replaces catalog number LS-C104869. It has been validated for use in the following assays: IHC-P.
Target:	BUB1 mitotic checkpoint serine/threonine kinase B (BUB1B)
Synonyms:	BUB1B Antibody, Bub1A Antibody, BUBR1 Antibody, HBUBR1 Antibody, Protein SSK1 Antibody, SSK1 Antibody, BUB1beta Antibody, MAD3L Antibody
Family / Subfamily:	Protein Kinase / BUB1
Host	BUB1B antibody was produced in Mouse
Clonality:	Monoclonal
Isotype:	IgG,k
Clone Name:	2G5
Immunogen Species:	BUB1B / BubR1 antibody was raised against Human
Antigen Type:	Recombinant protein
Immunogen:	BUB1B / BubR1 antibody was raised against bUB1B (AAH18739, 1 a.a. ~ 130 a.a) partial recombinant protein with GST tag. MW of the GST tag alone is 26 KDa.
Reactivity:	Human
Purification:	Protein A purified
Presentation:	PBS, pH 7.2
Recommended Storage:	Store at -20°C. Aliquot to avoid freeze/thaw cycles.
Usage Summary:	Western Blot (Cell lysate) - positive control Hela NE. Western Blot (Transfected lysate) - positive control transfected 293T cell line. Sandwich ELISA (Recombinant protein). RNAi Knockdown (Antibody validated). Proximity Ligation Assay (Cell).
Uses:	IHC - Paraffin (5 µg/ml), Western blot, ELISA, Proximity Ligation Assay, RNA interference (Optimal dilution to be determined by the researcher)
Size:	50 µg
Concentration:	0.5 mg/ml

Immunohistochemistry Image:



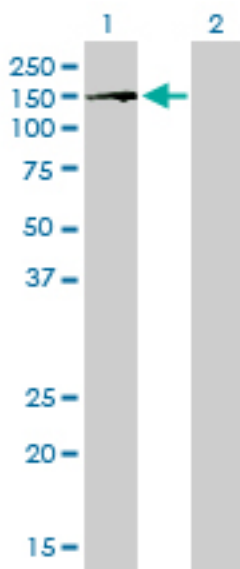
Anti-BUB1B / BubR1 antibody IHC of human skin. Immunohistochemistry of formalin-fixed, paraffin-embedded tissue after heat-induced antigen retrieval. Antibody LS-B4289 concentration 5 ug/ml.

Immunohistochemistry Image:



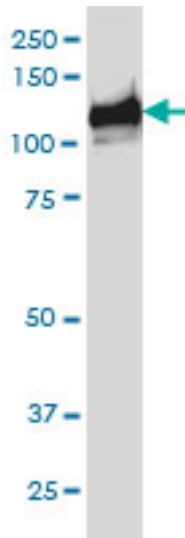
Anti-BUB1B / BubR1 antibody IHC of human placenta. Immunohistochemistry of formalin-fixed, paraffin-embedded tissue after heat-induced antigen retrieval. Antibody LS-B4289 concentration 5 ug/ml.

Western Blot Image:



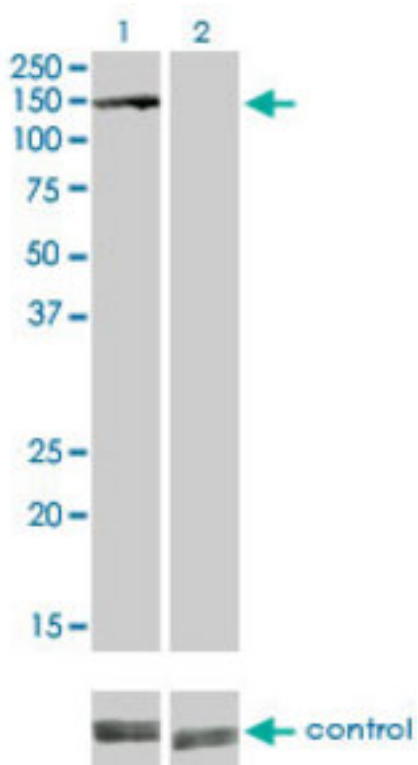
Western blot of BUB1B expression in transfected 293T cell line by BUB1B monoclonal antibody (M02), clone 2G5.

Western Blot Image:



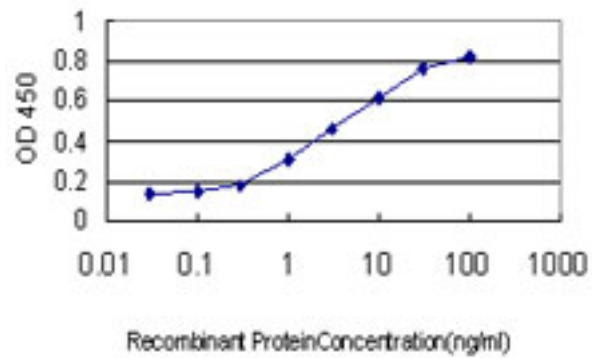
BUB1B monoclonal antibody (M02), clone 2G5 Western blot of BUB1B expression in HeLa NE.

RNA interference Image:



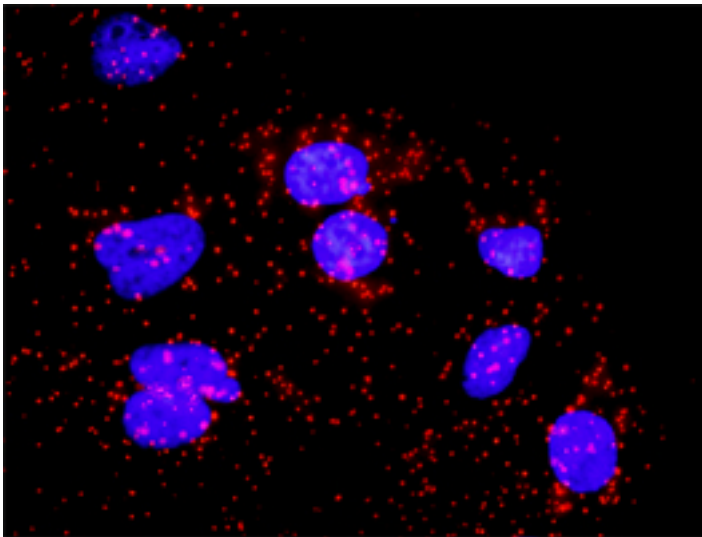
Western blot of BUB1B over-expressed 293 cell line, cotransfected with BUB1B Validated Chimera RNAi (Lane 2) or non-transfected control (Lane 1). Blot probed with BUB1B monoclonal antibody clone 2G5. GAPDH (36.1 kD) used as specificity an.

ELISA Image:



Detection limit for recombinant GST tagged BUB1B is approximately 0.03 ng/ml as a capture antibody.

Proximity Ligation Analysis Image:



Proximity Ligation Analysis (PLA) of protein-protein interactions between CDC20 and BUB1B. HeLa cells were stained with anti-CDC20 rabbit purified polyclonal 1:1200 and anti-BUB1B mouse monoclonal antibody 1:50. Signals were detected by Duolink 30 Detection.

Requested From:

Japan

Laboratory Reagent For In Vitro Research Use Only

Not for resale without prior written consent from LifeSpan BioSciences, Inc.

Created on 9/23/2014

© 2014 LifeSpan BioSciences