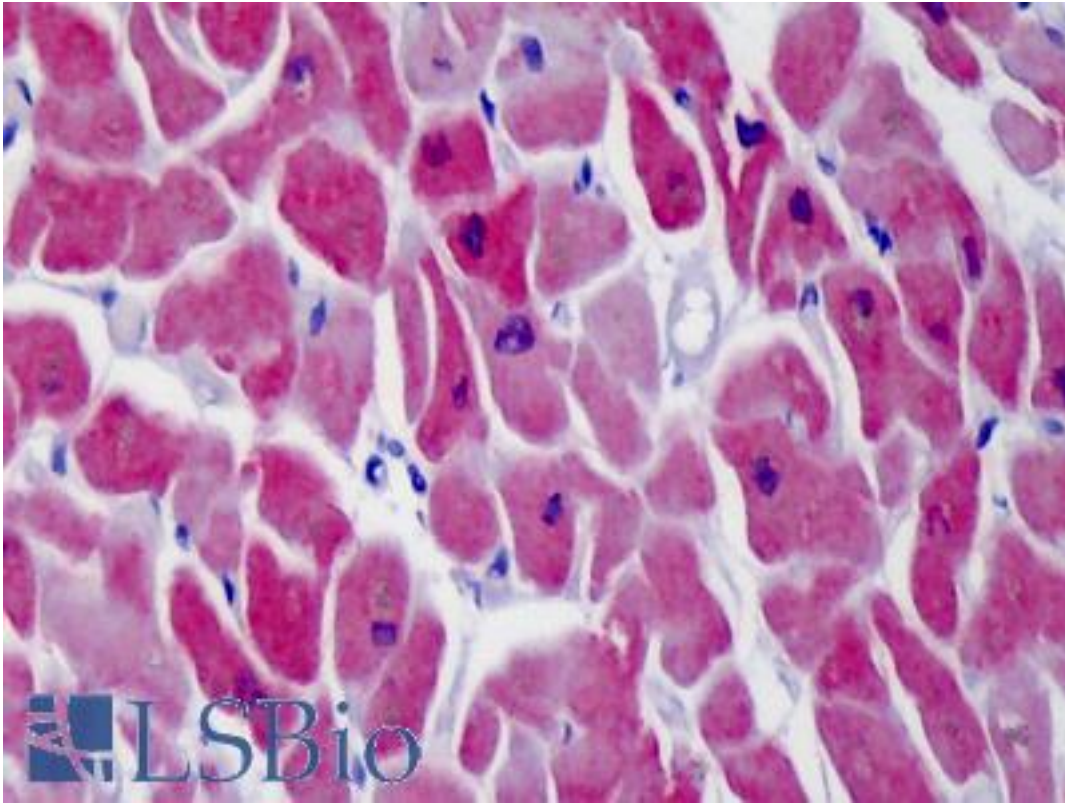


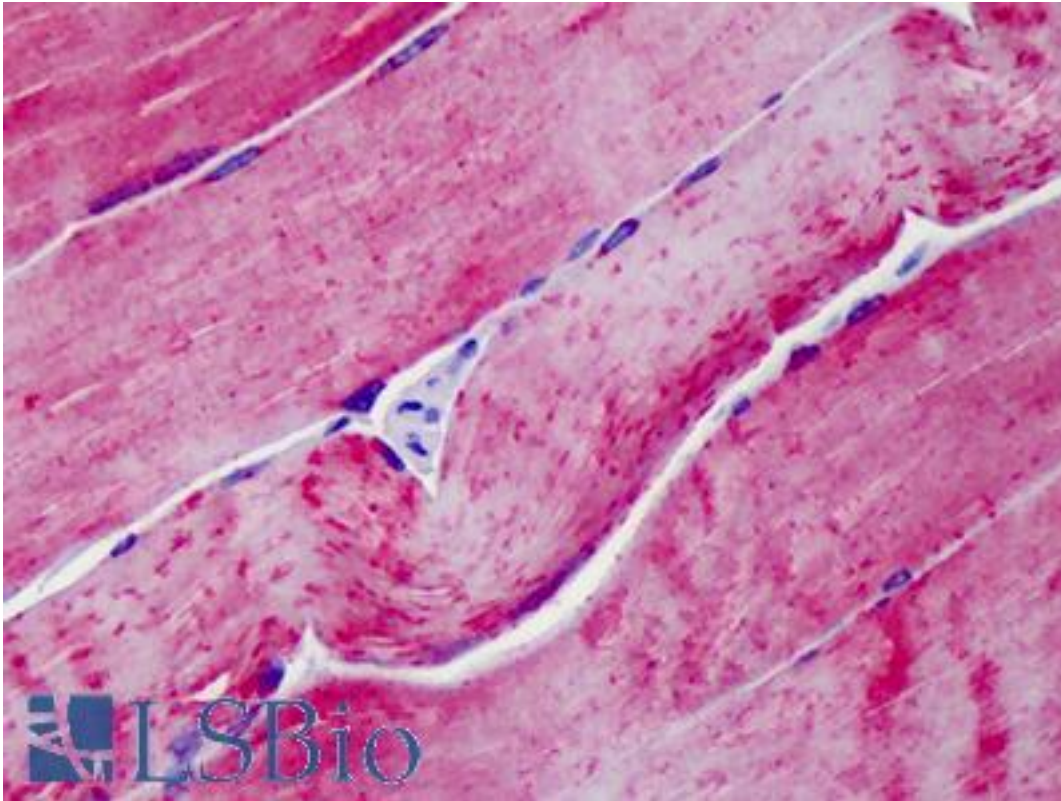
ATP2A1 / SERCA1 Mouse anti-Human Monoclonal (4B8) Antibody - LS-B4286 - LSBio	
CatalogID:	LS-B4286
Validation:	This antibody replaces catalog number LS-C104891. It has been validated for use in the following assays: IHC-P.
Target:	ATPase, Ca ⁺⁺ transporting, cardiac muscle, fast twitch 1 (ATP2A1)
Synonyms:	ATP2A1 Antibody, SERCA1 Antibody, ATP2A Antibody, Calcium pump 1 Antibody, SR Ca(2+)-ATPase 1 Antibody
Family / Subfamily:	Transporter / ATPase - P type, type IIA
Host	ATP2A1 antibody was produced in Mouse
Clonality:	Monoclonal
Isotype:	IgG3,k
Clone Name:	4B8
Immunogen Species:	ATP2A1 / SERCA1 antibody was raised against Human
Antigen Type:	Recombinant protein
Immunogen:	ATP2A1 / SERCA1 antibody was raised against aTP2A1 (NP_775293, 522 a.a. ~ 613 a.a) partial recombinant protein with GST tag. MW of the GST tag alone is 26 KDa.
Reactivity:	Human
Purification:	Protein A purified
Presentation:	PBS, pH 7.2
Recommended Storage:	Store at -20°C. Aliquot to avoid freeze/thaw cycles.
Usage Summary:	Western blot: Recombinant protein.
Uses:	IHC - Paraffin (5 µg/ml), Western blot (Optimal dilution to be determined by the researcher)
Size:	50 µg

Immunohistochemistry Image:



Anti-SERCA1 antibody IHC of human heart. Immunohistochemistry of formalin-fixed, paraffin-embedded tissue after heat-induced antigen retrieval. Antibody LS-B4286 concentration 5 ug/ml.

Immunohistochemistry Image:



Anti-SERCA1 antibody IHC of human skeletal muscle. Immunohistochemistry of formalin-fixed, paraffin-embedded tissue after heat-induced antigen retrieval. Antibody LS-B4286 concentration 5 ug/ml.

Requested From:

Japan

Laboratory Reagent For In Vitro Research Use Only

Not for resale without prior written consent from LifeSpan BioSciences, Inc.

Created on 9/23/2014

© 2014 LifeSpan BioSciences