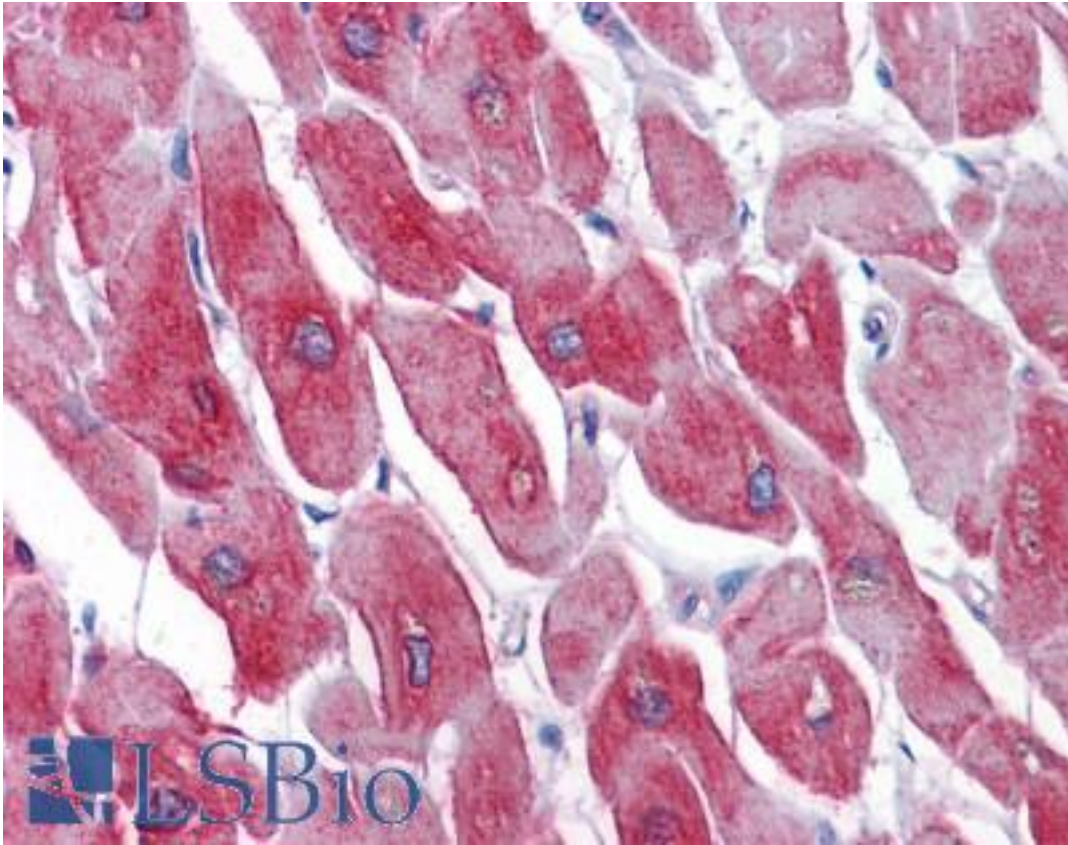


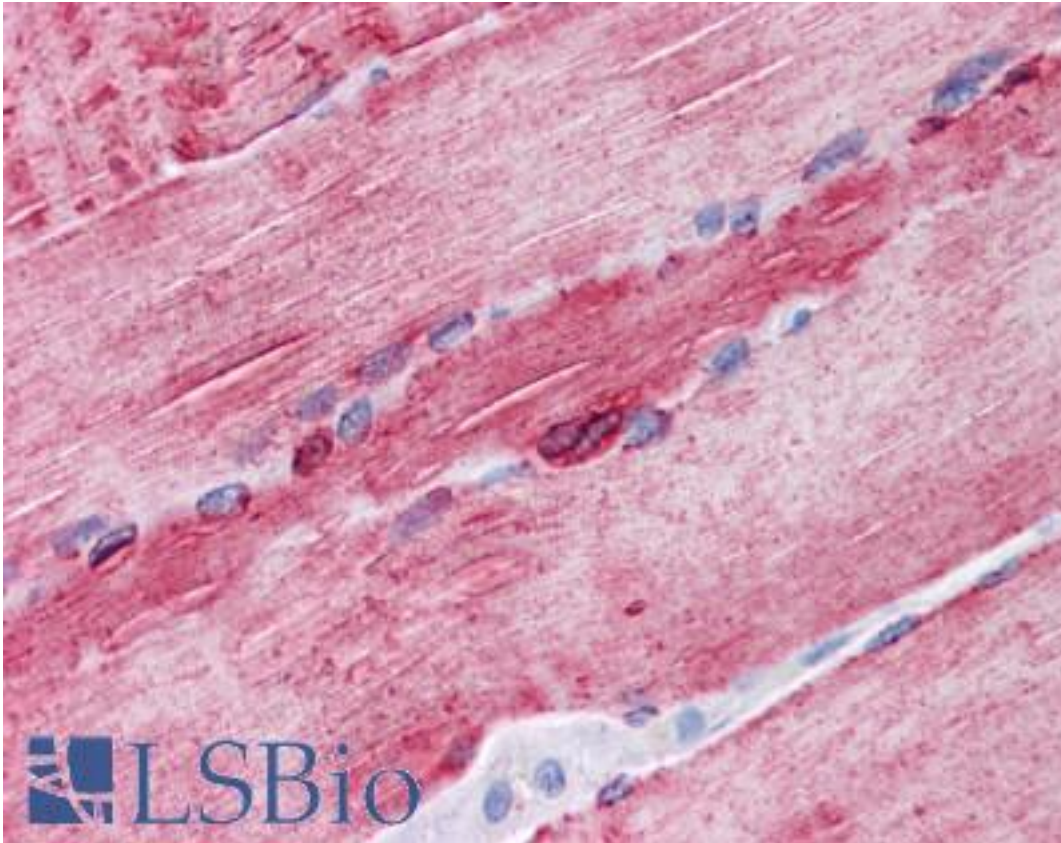
ATP2A1 / SERCA1 Mouse anti-Human Monoclonal (1B11) Antibody - LS-B4285 - LSBio	
CatalogID:	LS-B4285
Validation:	This antibody replaces catalog number LS-C104890. It has been validated for use in the following assays: IHC-P.
Target:	ATPase, Ca ⁺⁺ transporting, cardiac muscle, fast twitch 1 (ATP2A1)
Synonyms:	ATP2A1 Antibody, SERCA1 Antibody, ATP2A Antibody, Calcium pump 1 Antibody, SR Ca(2+)-ATPase 1 Antibody
Family / Subfamily:	Transporter / ATPase - P type, type IIA
Host	ATP2A1 antibody was produced in Mouse
Clonality:	Monoclonal
Isotype:	IgG1,k
Clone Name:	1B11
Immunogen Species:	ATP2A1 / SERCA1 antibody was raised against Human
Antigen Type:	Recombinant protein
Immunogen:	ATP2A1 / SERCA1 antibody was raised against aATP2A1 (NP_775293, 522 a.a. ~ 613 a.a) partial recombinant protein with GST tag. MW of the GST tag alone is 26 KDa.
Reactivity:	Human
Purification:	Protein A purified
Presentation:	PBS, pH 7.2.
Recommended Storage:	Store at -20°C. Aliquot to avoid freeze/thaw cycles.
Usage Summary:	Western Blot (Cell lysate) - positive control A-431. Western Blot, use antibody at 1:500 to 1:1000 dilution (Transfected lysate) - positive control transfected 293T cell line. Immunofluorescence (10 ug/ml) - positive control A-431 cells. ELISA - Recombinant protein.
Uses:	IHC - Paraffin (5 µg/ml), Immunofluorescence (10 µg/ml), Western blot, ELISA (2.5 µg/ml) (Optimal dilution to be determined by the researcher)
Size:	50 µg
Concentration:	0.5 mg/ml

Immunohistochemistry Image:



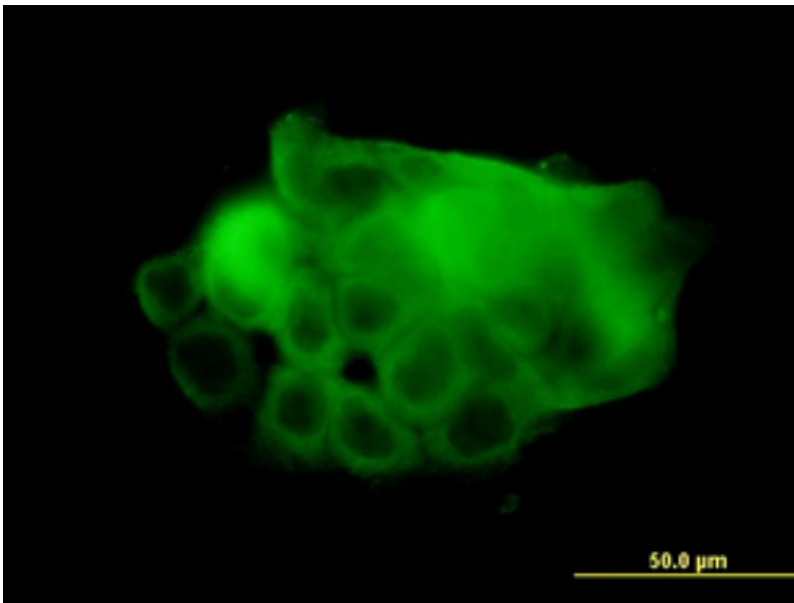
Anti-SERCA1 antibody IHC of human heart. Immunohistochemistry of formalin-fixed, paraffin-embedded tissue after heat-induced antigen retrieval. Antibody LS-B4285 concentration 5 ug/ml.

Immunohistochemistry Image:



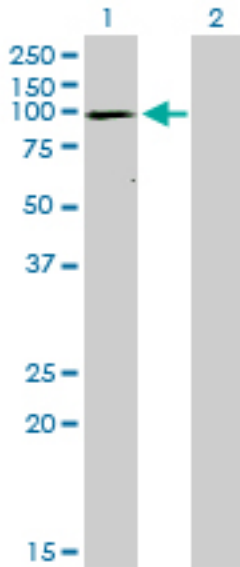
Anti-SERCA1 antibody IHC of human skeletal muscle. Immunohistochemistry of formalin-fixed, paraffin-embedded tissue after heat-induced antigen retrieval. Antibody LS-B4285 concentration 5 ug/ml.

Immunofluorescence Image:



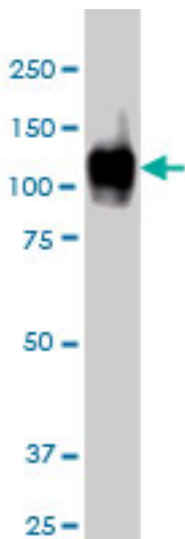
Immunofluorescence of monoclonal antibody to ATP2A1 on A-431 cell (antibody concentration 10 ug/ml).

Western Blot Image:



Western blot of ATP2A1 expression in transfected 293T cell line by ATP2A1 monoclonal antibody, clone 1B11.

Western Blot Image:



ATP2A1 monoclonal antibody, clone 1B11 Western blot of ATP2A1 expression in A-431.

Requested From:

Japan

Laboratory Reagent For In Vitro Research Use Only

Not for resale without prior written consent from LifeSpan BioSciences, Inc.

Created on 9/23/2014

© 2014 LifeSpan BioSciences