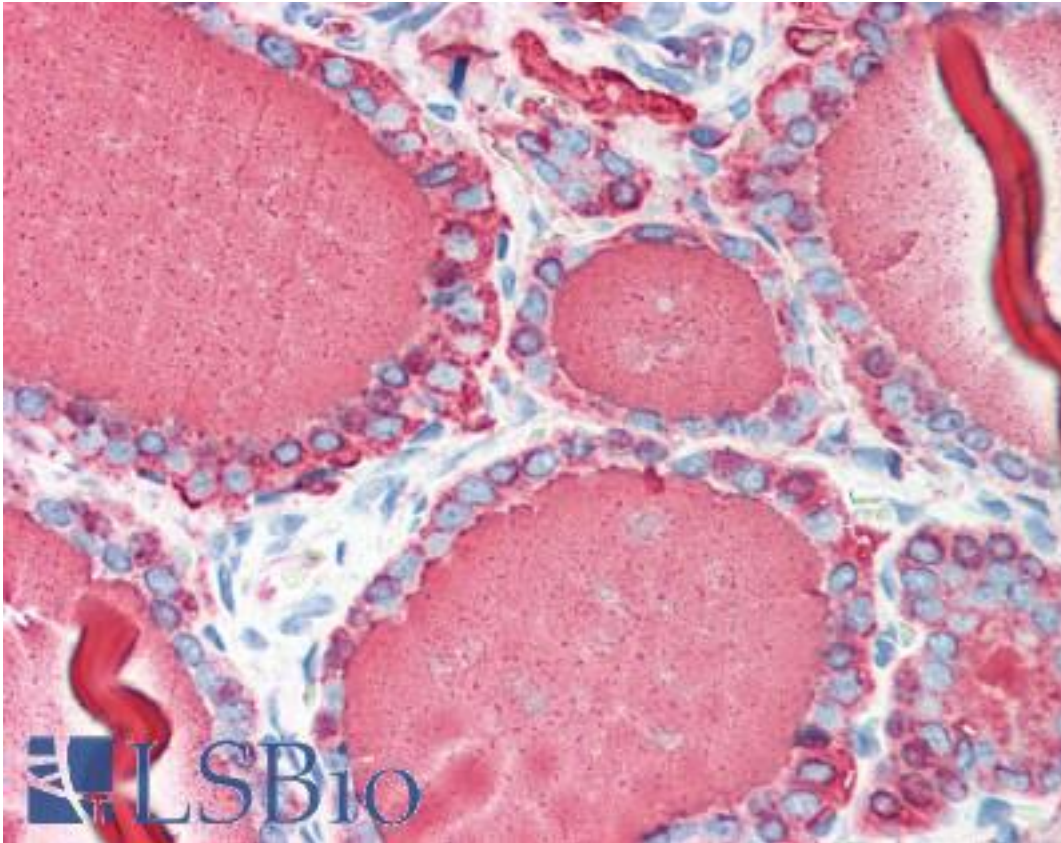


TG / Thyroglobulin Mouse anti-Human Monoclonal (2H11) Antibody - LS-B428 - LSBio

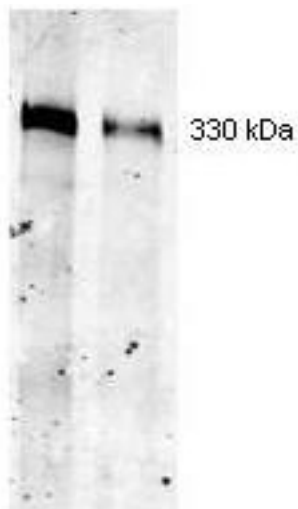
CatalogID:	LS-B428
Validation:	This antibody replaces catalog number LS-C18898. It has been validated for use in the following assays: IHC.
Target:	thyroglobulin (TG)
Synonyms:	TG Antibody, AITD3 Antibody, TDH3 Antibody, Thyroglobulin Antibody, TGN Antibody
Host	TG antibody was produced in Mouse
Clonality:	Monoclonal
Isotype:	IgG1
Clone Name:	2H11
Immunogen Species:	TG / Thyroglobulin antibody was raised against Human
Immunogen:	TG / Thyroglobulin antibody was raised against fusion protein from human TG / Thyroglobulin.
Specificity:	Human thyroglobulin protein. Hybridoma: Produced by the fusion between BALB/c mouse splenocytes and mouse myeloma SP2/0 cells after immunization with thyroglobulin from human thyroid gland using conventional hybridoma technology.
Reactivity:	Human, Mouse, Rat, Dog
Purification:	Protein A purified
Presentation:	0.02 M potassium phosphate, 0.5 M sodium chloride, pH 7.2, 0.01% sodium azide.
Recommended Storage:	+4°C or -20°C, Avoid repeated freezing and thawing.
Usage Summary:	Immunohistochemistry: LS-B428 was validated for use in immunohistochemistry on a panel of 21 formalin-fixed, paraffin-embedded (FFPE) human tissues after heat induced antigen retrieval in pH 6.0 citrate buffer. After incubation with the primary antibody, slides were incubated with biotinylated secondary antibody, followed by alkaline phosphatase-streptavidin and chromogen. The stained slides were evaluated by a pathologist to confirm staining specificity. The optimal working concentration for LS-B428 was determined to be 5 ug/ml.
Uses:	IHC - Paraffin (5 µg/ml), IHC - Frozen (1:50 - 1:200), Western blot (1:400), Immunoprecipitation, ELISA (Optimal dilution to be determined by the researcher)
Size:	50 µg
Concentration:	1 mg/ml

Immunohistochemistry Image:



Anti-TG / Thyroglobulin antibody IHC of human thyroid. Immunohistochemistry of formalin-fixed, paraffin-embedded tissue after heat-induced antigen retrieval. Antibody LS-B428 concentration 5 ug/ml.

Western Blot Image:



Anti-Thyroglobulin Antibody - Western Blot. Western blot of Mouse Mab-anti-Thyroglobulin antibody. Separation was achieved under reducing conditions using a pre-cast 5% Tris-HCl gel from Bio-Rad Laboratories. This antibody recognizes a single 330 kD band corresponding to human thyroglobulin (left lane 3 ug, right lane 3.0 ug) as confirmed by the position of molecular weight markers (not shown). A 1:400 dilution of Mab anti-Thyroglobulin was used for 2h followed by detection using a 1:5000 dilution of IRDyeTM800 conjugated Goat-a-Mouse IgG [H&L] (and visualization using the Odyssey Infrared Imaging System developed by LI-COR. Other detection systems will yield similar results. IRDye is a trademark of LI-COR, Inc.

Western Blot Image:



Western blot of anti-Thyroglobulin antibody at a dilution of 1:400. This antibody recognizes a single 330 kDa band corresponding to human thyroglobulin (left lane 3 mg, right lane 3.0 mg) as confirmed by the position of molecular weight markers (not shown).

Requested From:

Japan

Laboratory Reagent For In Vitro Research Use Only

Not for resale without prior written consent from LifeSpan BioSciences, Inc.

Created on 9/23/2014

© 2014 LifeSpan BioSciences