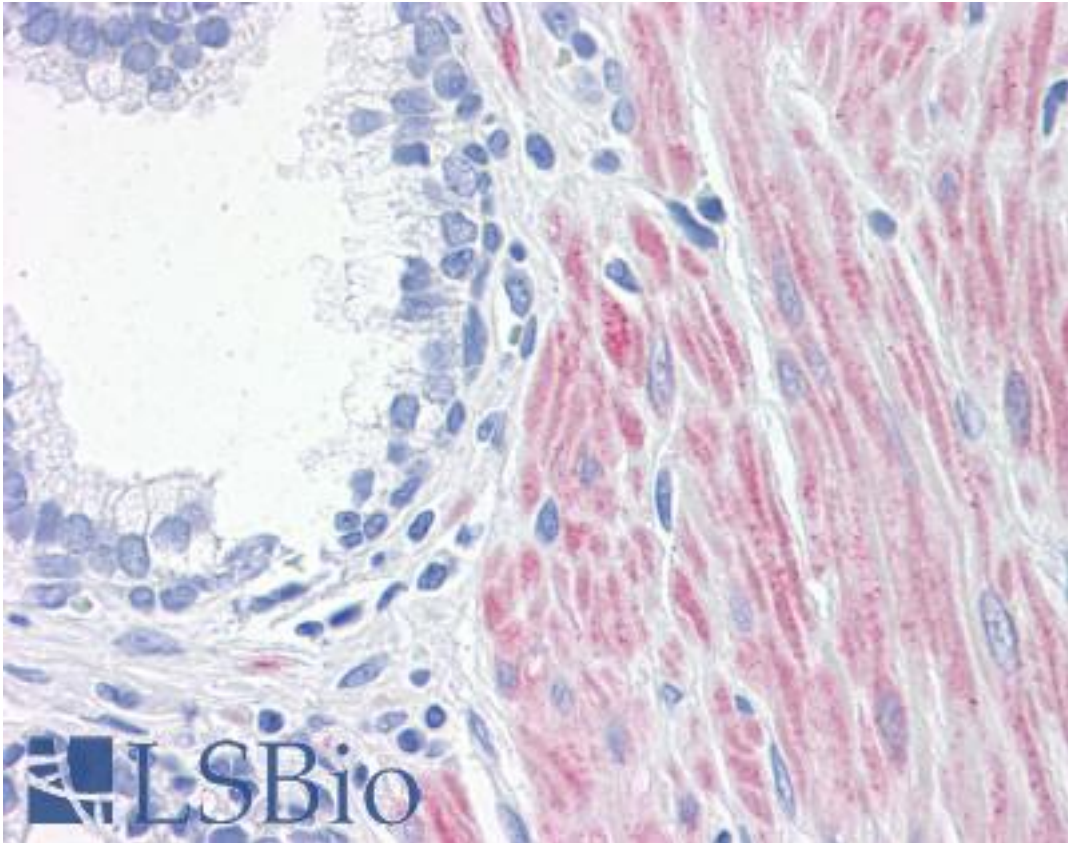


**15-LOX / ALOX15 Mouse anti-Human Monoclonal (3D8) Antibody - LS-B4278 - LSBio**

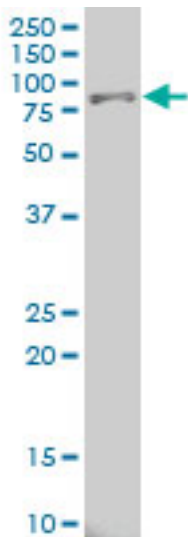
<b>CatalogID:</b>	LS-B4278
<b>Validation:</b>	This antibody replaces catalog number LS-C104881. It has been validated for use in the following assays: IHC-P.
<b>Target:</b>	arachidonate 15-lipoxygenase (ALOX15)
<b>Synonyms:</b>	ALOX15 Antibody, 15-lipoxygenase Antibody, 15-LOX Antibody, 15-lipoxygenase -1 Antibody, 15-LO-1 Antibody, 15LOX-1 Antibody, 15-LOX-1 Antibody, LOG15 Antibody, Arachidonate 15-lipoxygenase Antibody
<b>Host</b>	ALOX15 antibody was produced in Mouse
<b>Clonality:</b>	Monoclonal
<b>Isotype:</b>	IgG2a,k
<b>Clone Name:</b>	3D8
<b>Immunogen Species:</b>	15-LOX / ALOX15 antibody was raised against Human
<b>Antigen Type:</b>	Recombinant protein
<b>Immunogen:</b>	15-LOX / ALOX15 antibody was raised against aLOX15 (AAH29032, 1 a.a. ~ 663 a.a) full length recombinant protein with GST tag. MW of the GST tag alone is 26 KDa.
<b>Reactivity:</b>	Human
<b>Purification:</b>	Protein A purified
<b>Presentation:</b>	PBS, pH 7.2. Sourced in Ascites.
<b>Recommended Storage:</b>	Store at -20°C. Aliquot to avoid freeze/thaw cycles.
<b>Usage Summary:</b>	Western Blot (Cell lysate) - positive control Hela NE. ELISA (Recombinant protein).
<b>Uses:</b>	IHC - Paraffin (5 µg/ml), Western blot, ELISA (Optimal dilution to be determined by the researcher)
<b>Size:</b>	50 µg
<b>Concentration:</b>	0.5 mg/ml

**Immunohistochemistry Image:**



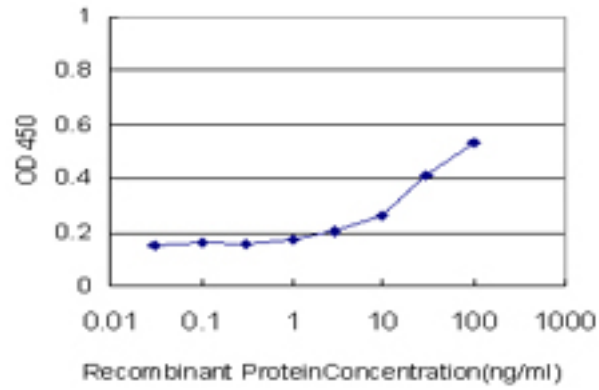
Anti-ALOX15 / 15 Lipoxygenase 1 antibody IHC of human prostate. Immunohistochemistry of formalin-fixed, paraffin-embedded tissue after heat-induced antigen retrieval. Antibody LS-B4278 concentration 5 ug/ml.

**Western Blot Image:**



ALOX15 monoclonal antibody, clone 3D8 Western blot of ALOX15 expression in HeLa NE.

**ELISA Image:**



Detection limit for recombinant GST tagged ALOX15 is approximately 3 ng/ml as a capture antibody.

**Requested From:**

Japan

Laboratory Reagent For In Vitro Research Use Only

Not for resale without prior written consent from LifeSpan BioSciences, Inc.

Created on 9/23/2014

© 2014 LifeSpan BioSciences