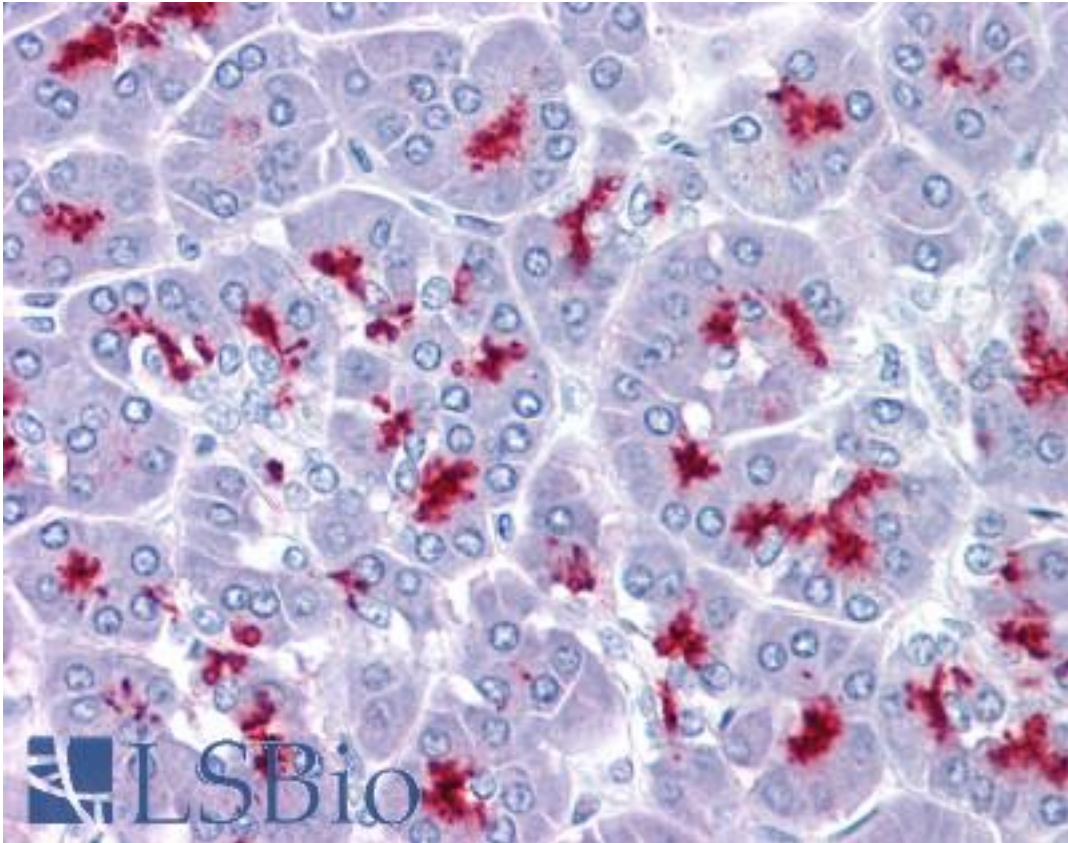


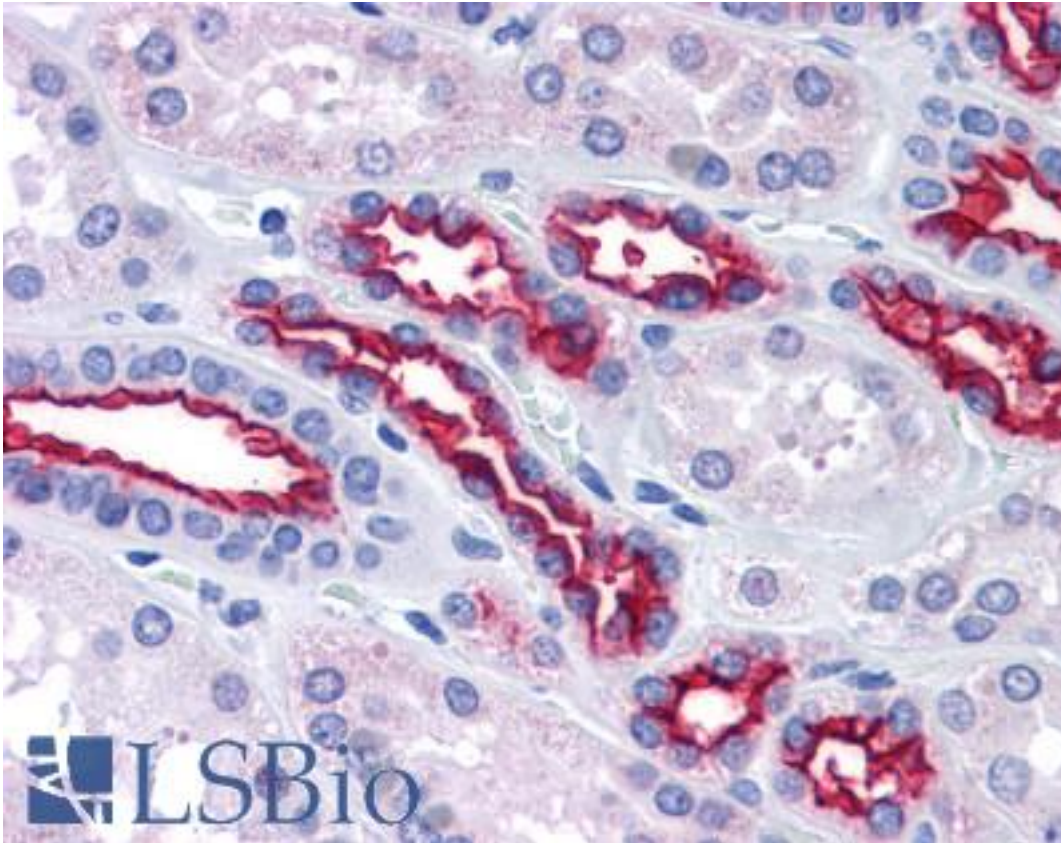
EMA / MUC1 Rabbit anti-Human Polyclonal Antibody - LS-B4275 - LSBio	
<b>CatalogID:</b>	LS-B4275
<b>Validation:</b>	This antibody replaces catalog number LS-C50620. It has been validated for use in the following assays: IHC-P.
<b>Target:</b>	mucin 1, cell surface associated (MUC1)
<b>Synonyms:</b>	MUC1 Antibody, CA15-3 Antibody, CD227 Antibody, Carcinoma-associated mucin Antibody, CD227 antigen Antibody, DF3 antigen Antibody, Episialin Antibody, Epithelial membrane antigen Antibody, H23 antigen Antibody, H23AG Antibody, Krebs von den Lungen-6 Antibody, MAM6 Antibody, MUC1/ZD Antibody, MUC-1/SEC Antibody, Mucin-1 Antibody, Pem Antibody, KL-6 Antibody, MUC-1/X Antibody, Tumor-associated mucin Antibody, Peanut-reactive urinary mucin Antibody, Polymorphic epithelial mucin Antibody, PUM Antibody, EMA Antibody, MUC-1 Antibody, Mucin 1, transmembrane Antibody
<b>Family / Subfamily:</b>	Mucin / not assigned-Mucin
<b>Host</b>	MUC1 antibody was produced in Rabbit
<b>Clonality:</b>	Polyclonal
<b>Immunogen Species:</b>	EMA / MUC1 antibody was raised against Human
<b>Antigen Type:</b>	Synthetic peptide
<b>Immunogen:</b>	EMA / MUC1 antibody was raised against a synthetic peptide from the cytoplasmic tail of human MUC1.
<b>Reactivity:</b>	Human, Mouse
<b>Purification:</b>	Immunoaffinity purified
<b>Presentation:</b>	PBS pH 7.6, 1% BSA buffer with less than 0.1% sodium azide
<b>Recommended Storage:</b>	Long term: -20°C; Short term: +4°C. Avoid repeat freeze-thaw cycles.
<b>Uses:</b>	IHC - Paraffin (1:100) (Optimal dilution to be determined by the researcher)
<b>Size:</b>	250 µl

**Immunohistochemistry Image:**



Anti-MUC1 antibody IHC of human pancreas. Immunohistochemistry of formalin-fixed, paraffin-embedded tissue after heat-induced antigen retrieval. Antibody LS-B4275 dilution 1:100.

**Immunohistochemistry Image:**



Anti-MUC1 antibody IHC of human kidney. Immunohistochemistry of formalin-fixed, paraffin-embedded tissue after heat-induced antigen retrieval. Antibody LS-B4275 dilution 1:100.

**Requested From:**

Japan

Laboratory Reagent For In Vitro Research Use Only

Not for resale without prior written consent from LifeSpan BioSciences, Inc.

Created on 9/23/2014

© 2014 LifeSpan BioSciences