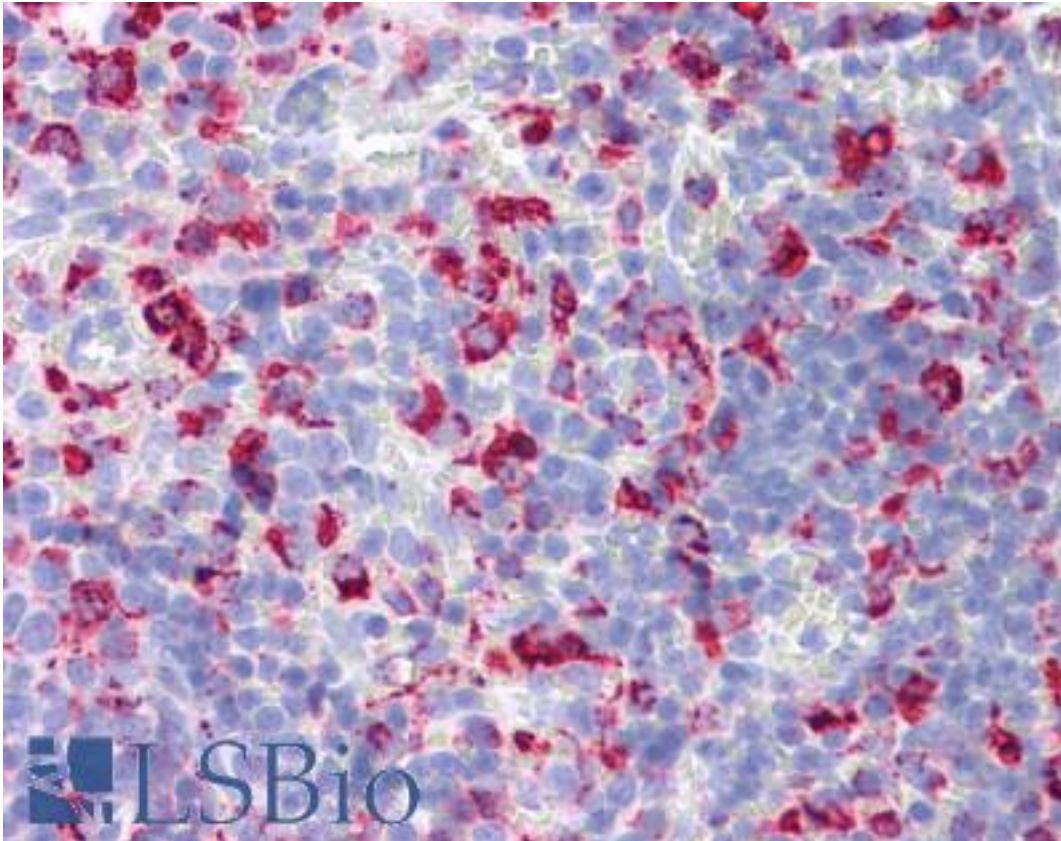


CD68 Mouse Monoclonal (ED1) Antibody - LS-B4273 - LSBio

CatalogID:	LS-B4273
Validation:	This antibody replaces catalog number LS-C96395. It has been validated for use in the following assays: IHC-P.
Target:	CD68 molecule
Synonyms:	CD68 Antibody, CD68 antigen Antibody, gp110 Antibody, SCARD1 Antibody, CD68 molecule Antibody, LAMP4 Antibody, Macrophage antigen CD68 Antibody, Macrosialin Antibody
Host	CD68 antibody was produced in Mouse
Clonality:	Monoclonal
Isotype:	IgG1
Clone Name:	ED1
Antigen Type:	Cells
Immunogen:	CD68 antibody was raised against rat spleen cells
Specificity:	CD68; ED1 recognizes a 92kD cytoplasmic protein. The epitope has not been further characterized. Antigen distribution: The antigen is found on 90% of monocytes in the peripheral blood. It is also expressed by 98% of isolated dendritic (veiled) cells. Specificity: Rat: monocytes macrophages, dendritic cells Other species: not tested
Reactivity:	Rat
Purification:	Affinity purified
Presentation:	PBS pH 7.2, 0.09% sodium azide
Recommended Storage:	Store at -20°C. Aliquot to avoid freeze/thaw cycles.
Uses:	IHC - Paraffin (10 µg/ml), IHC - Frozen (1:1000 - 1:2000) (Optimal dilution to be determined by the researcher)
Size:	125 µg
Concentration:	1 mg/ml

Immunohistochemistry Image:



Anti-CD68 antibody IHC of rat spleen. Immunohistochemistry of formalin-fixed, paraffin-embedded tissue after heat-induced antigen retrieval. Antibody LS-B4273 concentration 10 ug/ml.

Requested From:

Japan

Laboratory Reagent For In Vitro Research Use Only

Not for resale without prior written consent from LifeSpan BioSciences, Inc.

Created on 9/23/2014

© 2014 LifeSpan BioSciences