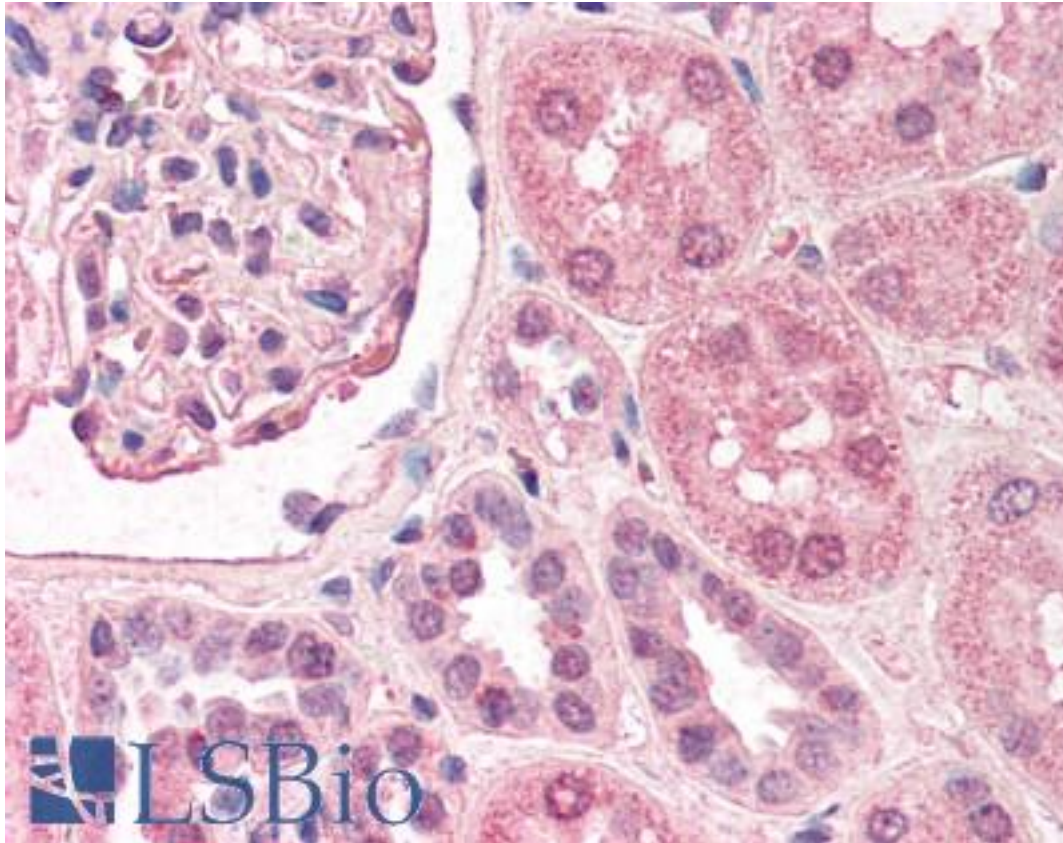


**TFAP2A / AP-2 Goat anti-Human Polyclonal (aa3-14) Antibody - LS-B427 - LSBio**

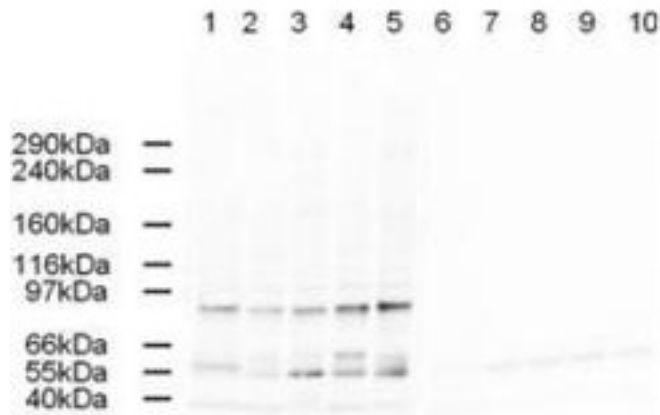
<b>CatalogID:</b>	LS-B427
<b>Validation:</b>	This antibody replaces catalog number LS-C18899. It has been validated for use in the following assays: IHC.
<b>Target:</b>	transcription factor AP-2 alpha (activating enhancer binding protein 2 alpha) (TFAP2A)
<b>Synonyms:</b>	TFAP2A Antibody, Activator protein 2 Antibody, AP-2 Antibody, AP-2a Antibody, AP2TF Antibody, AP-2alpha Antibody, BOFS Antibody, TFAP2 Antibody, Transcription factor AP-2 Antibody, AP-2 transcription factor Antibody, AP2-alpha Antibody
<b>Host</b>	TFAP2A antibody was produced in Goat
<b>Clonality:</b>	Polyclonal
<b>Immunogen Species:</b>	TFAP2A / AP-2 antibody was raised against Human
<b>Antigen Type:</b>	Synthetic peptide
<b>Immunogen:</b>	TFAP2A / AP-2 antibody was raised against synthetic peptide from human TFAP2A / AP2 Alpha.
<b>Specificity:</b>	aa 3-14 of Human AP2A1 and AP2A2 proteins.
<b>Epitope:</b>	aa3-14
<b>Reactivity:</b>	Human, Chimpanzee, Orangutan, Mouse, Rat, Dog, Chicken
<b>Purification:</b>	Immunoaffinity purified
<b>Presentation:</b>	0.02 M potassium phosphate, 0.15 M sodium chloride, pH 7.2, 0.01% sodium azide.
<b>Recommended Storage:</b>	+4°C or -20°C, Avoid repeated freezing and thawing.
<b>Usage Summary:</b>	Immunohistochemistry: LS-B427 was validated for use in immunohistochemistry on a panel of 21 formalin-fixed, paraffin-embedded (FFPE) human tissues after heat induced antigen retrieval in pH 6.0 citrate buffer. After incubation with the primary antibody, slides were incubated with biotinylated secondary antibody, followed by alkaline phosphatase-streptavidin and chromogen. The stained slides were evaluated by a pathologist to confirm staining specificity. The optimal working concentration for LS-B427 was determined to be 2.5 ug/ml.
<b>Uses:</b>	IHC - Paraffin (2.5 ug/ml), Immunofluorescence, Western blot (1:500 - 1:2000), ELISA (1:5000 - 1:20000) (Optimal dilution to be determined by the researcher)
<b>Size:</b>	50 ug

**Immunohistochemistry Image:**



Anti-TFAP2A / AP2 Alpha antibody IHC of human kidney. Immunohistochemistry of formalin-fixed, paraffin-embedded tissue after heat-induced antigen retrieval. Antibody LS-B427 concentration 5 ug/ml.

**Western Blot Image:**



Anti-AP2A Antibody - Western Blot. Western blot of Affinity Purified anti-AP2A antibody shows detection of a band just below 100 kD corresponding to Human AP2A1 in a various preparations. Lane 1 - HeLa nuclear extract, Lane 2 - HeLa, Lane 3 - 293, Lane 4 - A431 and Lane 5 - Jurkat whole cell lysates. In lanes 6-10 the antibody was preincubated with 1 ug/ml of the immunizing peptide which effectively blocks the specific reactivity of this antibody with AP2A. Approximately 20 ug of each lysate was run on a SDS-PAGE and transferred onto nitrocellulose followed by reaction with a 1:500 dilution of anti-AP2A antibody. Detection occurred using a 1:5000 dilution of HRP-labeled Rabbit anti-Goat IgG for 1 hour at room temperature. A chemiluminescence system was used for signal detection (Roche) using a 60-sec exposure time.

**Requested From:**

Japan

Laboratory Reagent For In Vitro Research Use Only

Not for resale without prior written consent from LifeSpan BioSciences, Inc.

Created on 9/23/2014

© 2014 LifeSpan BioSciences