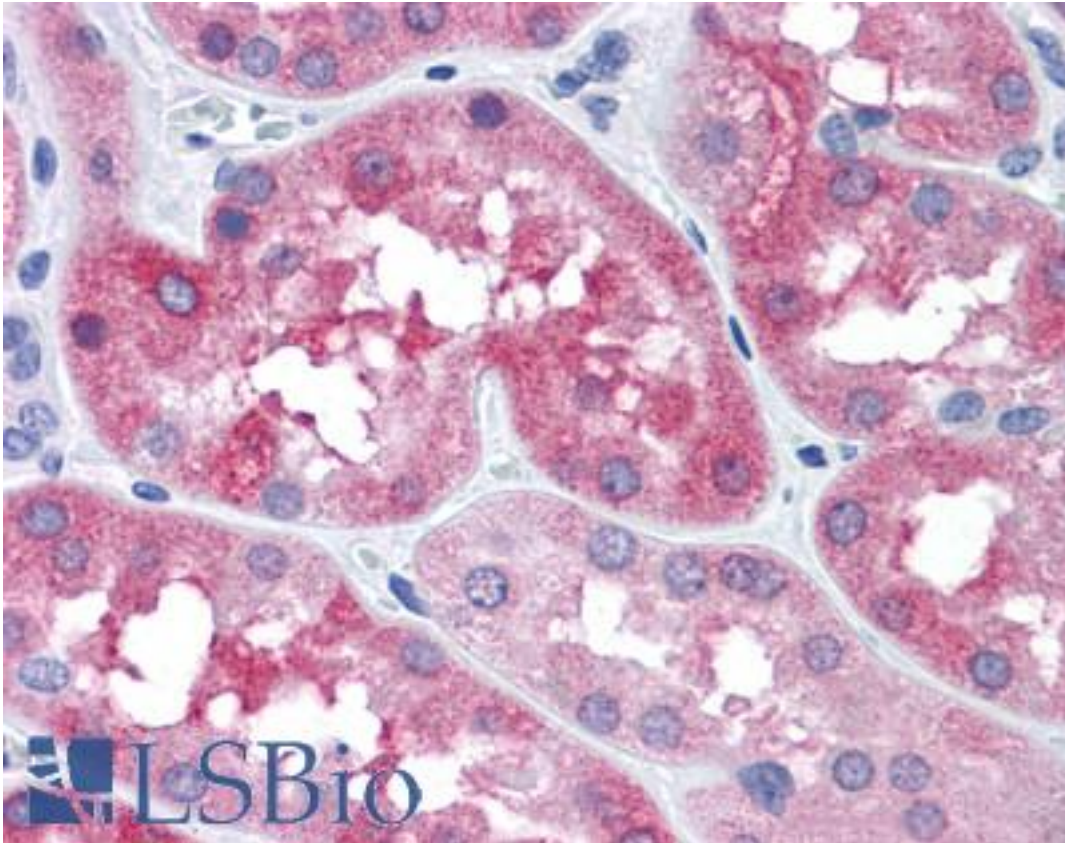


**MAPT / TAU Rabbit anti-Human Polyclonal (Ser404) Antibody - LS-B4257 - LSBio**

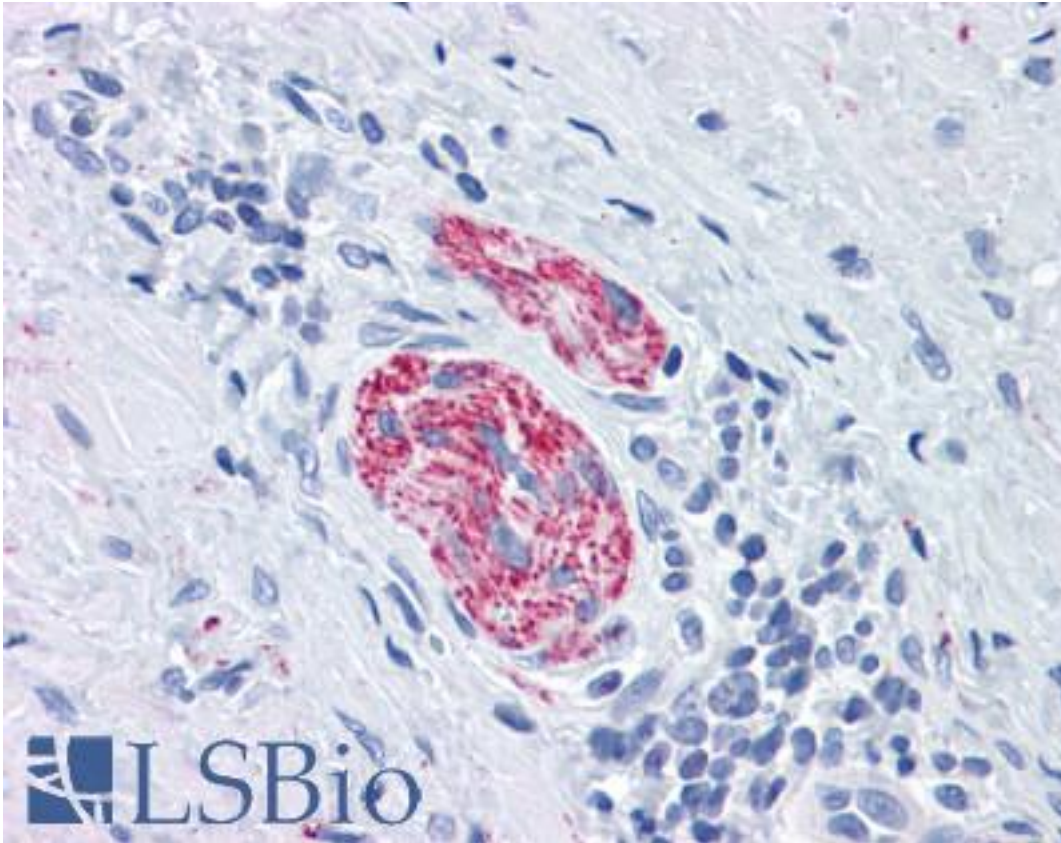
<b>CatalogID:</b>	LS-B4257
<b>Validation:</b>	This antibody replaces catalog number LS-C51287. It has been validated for use in the following assays: IHC-P.
<b>Target:</b>	microtubule-associated protein tau (MAPT)
<b>Synonyms:</b>	MAPT Antibody, FTDP-17 Antibody, MSTD Antibody, Neurofibrillary tangle protein Antibody, PHF-tau Antibody, MTBT2 Antibody, PPND Antibody, DDPAC Antibody, MAPTL Antibody, MTBT1 Antibody, Paired helical filament-tau Antibody, TAU Antibody
<b>Host</b>	MAPT antibody was produced in Rabbit
<b>Clonality:</b>	Polyclonal
<b>Isotype:</b>	IgG
<b>Immunogen Species:</b>	MAPT / TAU antibody was raised against Human
<b>Antigen Type:</b>	Synthetic peptide
<b>Immunogen:</b>	MAPT / TAU antibody was raised against synthesized non-phosphopeptide derived from human Tau around the phosphorylation site of serine 404 (D-T-SP-P-R).
<b>Specificity:</b>	endogenous levels of total Tau protein
<b>Epitope:</b>	Ser404
<b>Reactivity:</b>	Human, Chimpanzee, Gorilla, Orangutan, Gibbon, Monkey, Mouse, Rat, Bovine, Dog, Goat, Horse, Rabbit
<b>Purification:</b>	Immunoaffinity purified
<b>Presentation:</b>	PBS (without Mg <sup>2+</sup> , Ca <sup>2+</sup> ), pH 7.4, 150 mM sodium chloride, 0.02% sodium azide, 50% glycerol.
<b>Recommended Storage:</b>	Aliquot and store at -20°C. Minimize freezing and thawing.
<b>Uses:</b>	IHC - Paraffin (15 µg/ml), Western blot (1:500 - 1:1000) (Optimal dilution to be determined by the researcher)
<b>Size:</b>	100 µg
<b>Concentration:</b>	1 mg/ml

**Immunohistochemistry Image:**



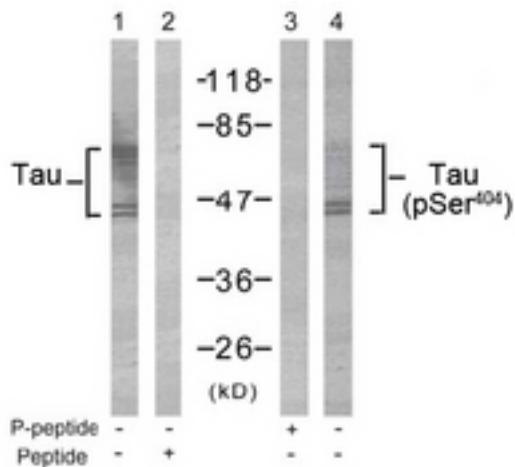
Anti-MAPT / Tau antibody IHC of human kidney. Immunohistochemistry of formalin-fixed, paraffin-embedded tissue after heat-induced antigen retrieval. Antibody LS-B4257 concentration 15 ug/ml.

**Immunohistochemistry Image:**



Anti-MAPT / Tau antibody IHC of human nerve. Immunohistochemistry of formalin-fixed, paraffin-embedded tissue after heat-induced antigen retrieval. Antibody LS-B4257 concentration 15 ug/ml.

**Western Blot Image:**



Western blot of extract from mouse brain tissue using Rabbit Anti-Tau (Ab-404) Polyclonal Antibody (LS-B4257, lane 1 and 2) and Rabbit Anti-Tau (Phospho-Ser404) Polyclonal Antibody

**Requested From:**

Japan

Laboratory Reagent For In Vitro Research Use Only

Not for resale without prior written consent from LifeSpan BioSciences, Inc.

Created on 9/23/2014

© 2014 LifeSpan BioSciences