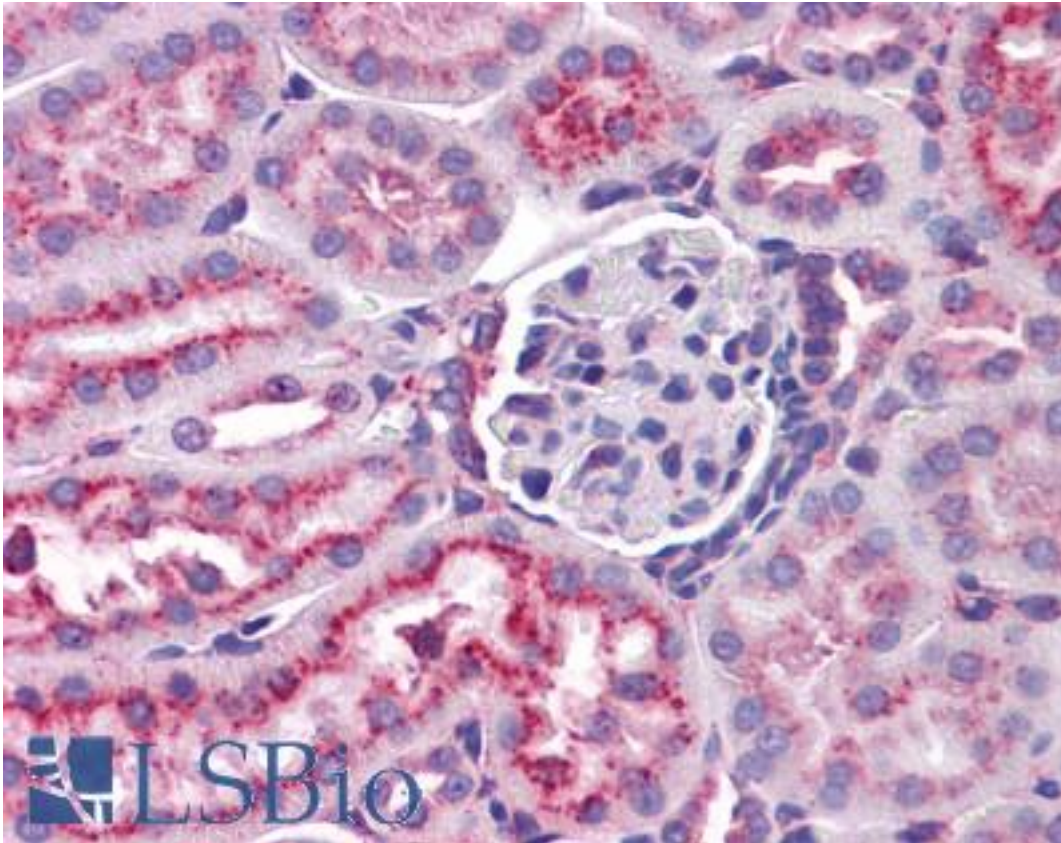


LAMP2 / CD107b Rat anti-Mouse Monoclonal (FITC) Antibody - LS-B4247 - LSBio

CatalogID:	LS-B4247
Validation:	This antibody replaces catalog number LS-C8590. It has been validated for use in the following assays: IHC-P.
Target:	lysosomal-associated membrane protein 2 (LAMP2)
Synonyms:	LAMP2 Antibody, CD107b Antibody, CD107b antigen Antibody, LAMPB Antibody, LGP110 Antibody, LAMP-2 Antibody
Family / Subfamily:	Cancer
Host	LAMP2 antibody was produced in Rat
Clonality:	Monoclonal
Isotype:	IgG2a,k
Conjugations:	Fluorescein (FITC)
Immunogen Species:	LAMP2 / CD107b antibody was raised against Mouse
Immunogen:	LAMP2 / CD107b antibody was raised against glycoproteins purified from BALB/c mouse embryo 3T3 cell line.
Specificity:	Recognizes murine CD107b/LAMP-2 (Mr 110-120kD with a core protein of Mr ~40kD).
Reactivity:	Mouse
Purification:	Purified
Presentation:	PBS, sodium azide.
Recommended Storage:	+4°C (short-term), -20°C (long-term). Protect from light.
Usage Summary:	Flow cytometry. Immunohistochemistry with acetone-fixed, frozen tissue sections and FFPE. Immunoprecipitation. Flow Cytometry: 1 ug/1E6 cells.
Uses:	IHC - Paraffin (10 µg/ml), IHC - Frozen, Immunoprecipitation, Flow Cytometry (Optimal dilution to be determined by the researcher)
Size:	250 µg
Concentration:	0.5 mg/ml

Immunohistochemistry Image:



Anti-LAMP2 antibody IHC of mouse kidney. Immunohistochemistry of formalin-fixed, paraffin-embedded tissue after heat-induced antigen retrieval. Antibody LS-B4247 concentration 10 ug/ml.

Requested From:

Japan

Laboratory Reagent For In Vitro Research Use Only

Not for resale without prior written consent from LifeSpan BioSciences, Inc.

Created on 9/23/2014

© 2014 LifeSpan BioSciences