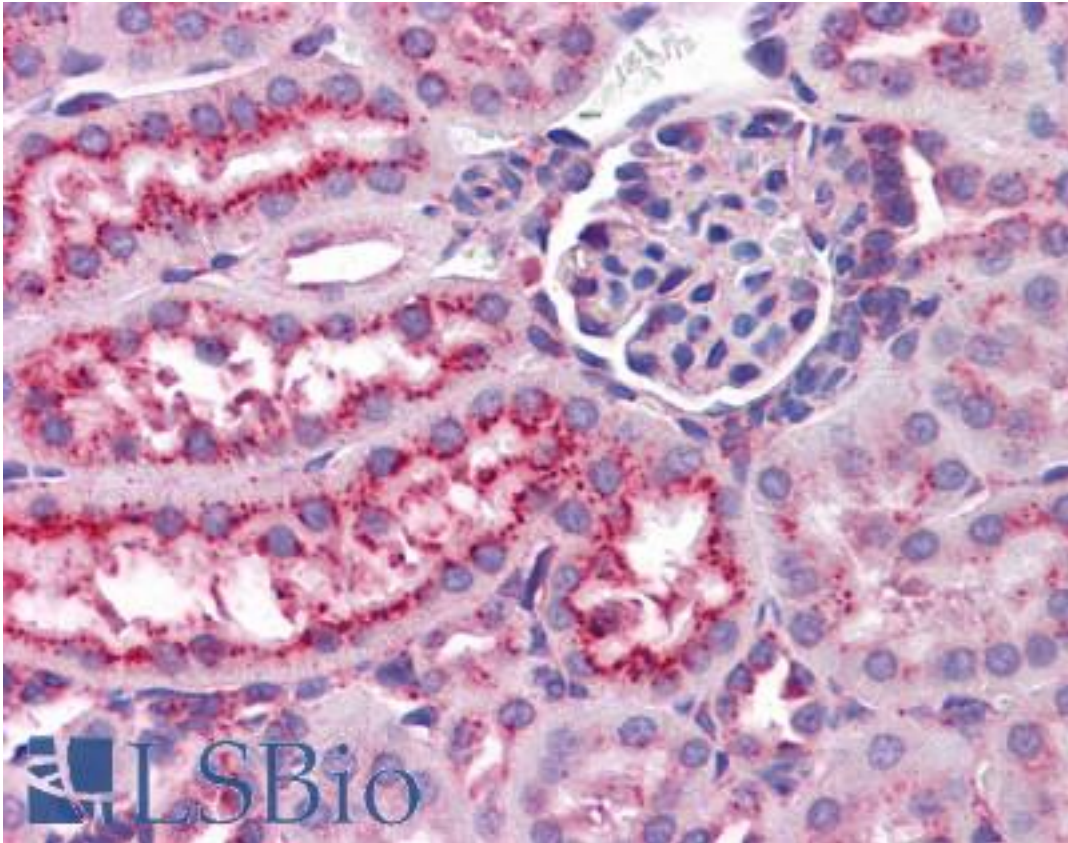


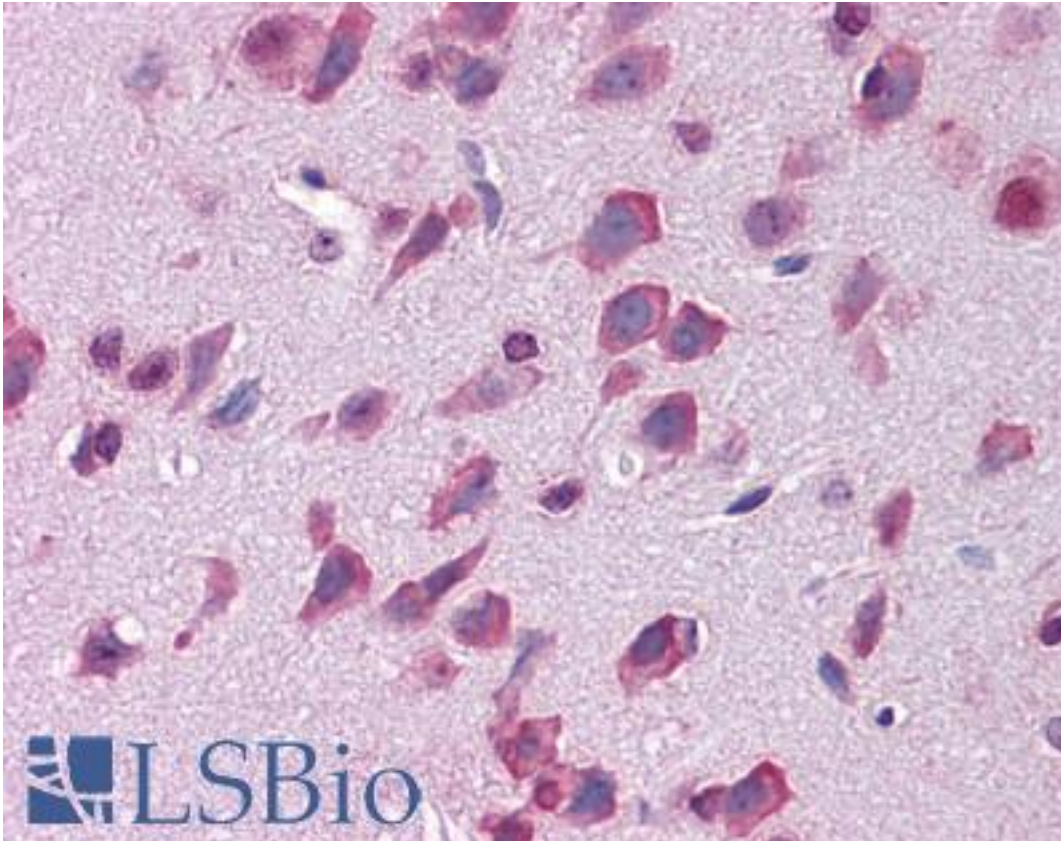
LAMP1 / CD107a Rat anti-Mouse Monoclonal (FITC) Antibody - LS-B4246 - LSBio	
CatalogID:	LS-B4246
Validation:	This antibody replaces catalog number LS-C8572. It has been validated for use in the following assays: IHC-Fr.
Target:	lysosomal-associated membrane protein 1 (LAMP1)
Synonyms:	LAMP1 Antibody, CD107a Antibody, CD107a antigen Antibody, LAMP-1 Antibody, LGP120 Antibody, LAMPA Antibody
Host	LAMP1 antibody was produced in Rat
Clonality:	Monoclonal
Isotype:	IgG2a,k
Conjugations:	Fluorescein (FITC)
Immunogen Species:	LAMP1 / CD107a antibody was raised against Mouse
Immunogen:	LAMP1 / CD107a antibody was raised against plasma membrane fraction of mouse embryo NIH3T3 cell line.
Specificity:	Recognizes murine CD107a/LAMP-1 (Mr 110-140kD with a core protein of Mr ~40kD).
Reactivity:	Mouse
Purification:	Purified
Presentation:	PBS, sodium azide.
Recommended Storage:	Long term: -20°C; Short term: +4°C. Avoid repeat freeze-thaw cycles.
Usage Summary:	Flow cytometry, Immunoaffinity chromatography, Immunohistochemistry-frozen and FFPE, Immunoprecipitation and Western blotting. Flow Cytometry: 1 ug/1E6 cells.
Uses:	IHC - Paraffin (10 µg/ml), IHC - Frozen, Western blot, Immunoprecipitation, Flow Cytometry (Optimal dilution to be determined by the researcher)
Size:	250 µg
Concentration:	0.5 mg/ml

Immunohistochemistry Image:



Anti-LAMP1 antibody IHC of mouse kidney. Immunohistochemistry of formalin-fixed, paraffin-embedded tissue after heat-induced antigen retrieval. Antibody LS-B4246 concentration 10 ug/ml.

Immunohistochemistry Image:



Anti-LAMP1 antibody IHC of mouse brain. Immunohistochemistry of formalin-fixed, paraffin-embedded tissue after heat-induced antigen retrieval. Antibody LS-B4246 concentration 10 ug/ml.

Requested From:

Japan

Laboratory Reagent For In Vitro Research Use Only

Not for resale without prior written consent from LifeSpan BioSciences, Inc.

Created on 9/23/2014

© 2014 LifeSpan BioSciences